

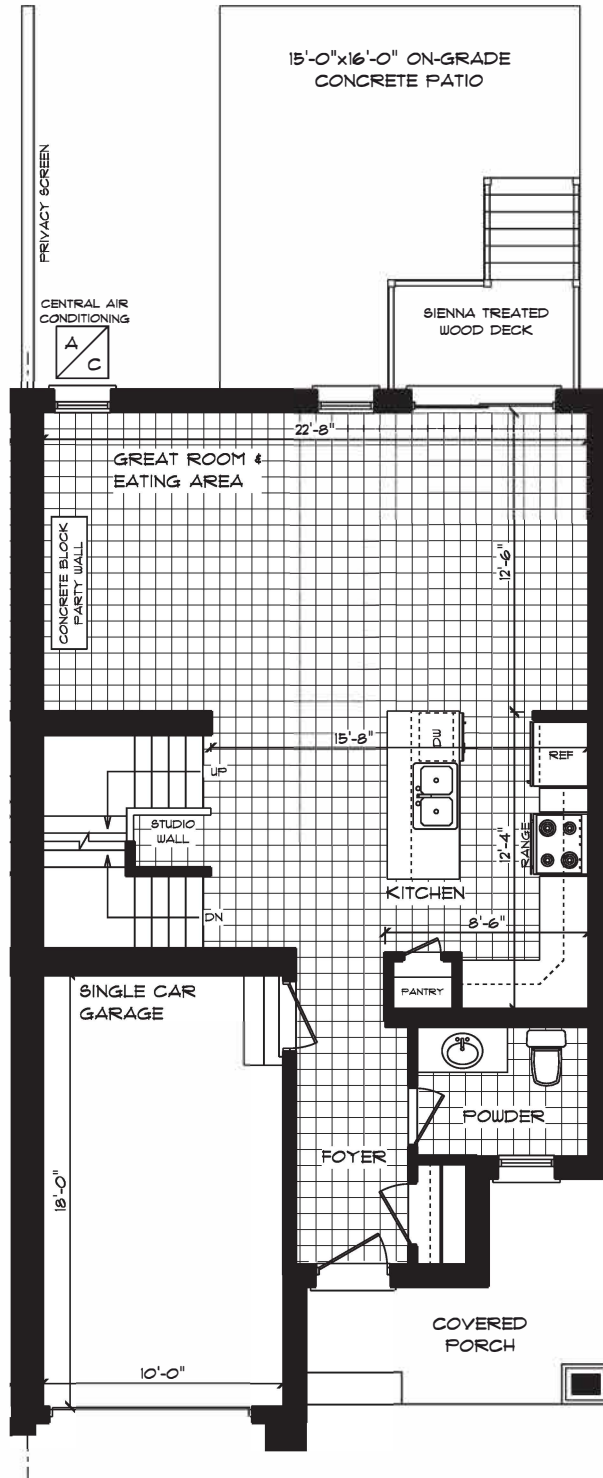


CONTEMPORARY TOWN  
10-486 BURWELL ROAD, ST. THOMAS

FRONT ELEVATION  
APPROX. 2009 TOTAL SQ. FT.

This plan is the property of Haysco Homes and any reproduction of this plan, its concepts or ideas, is strictly prohibited. Plans and specifications are approximate and are subject to change without notice. Finished area and room dimensions will change depending on front elevation selection.

E. & O.E. Created June 2016

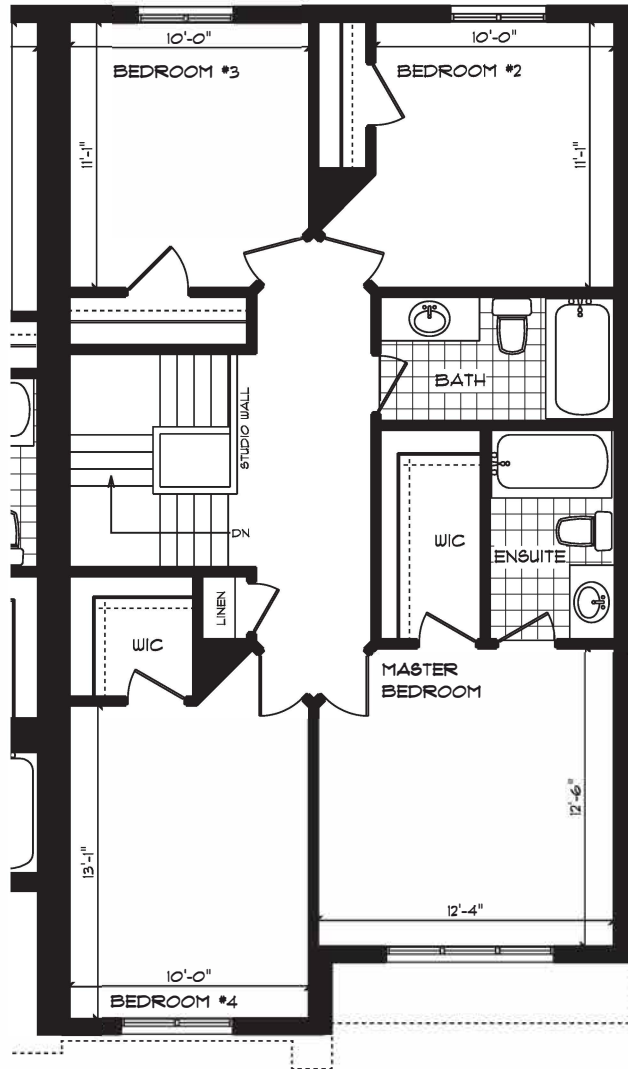


CONTEMPORARY TOWN  
 10-486 BURWELL ROAD, ST. THOMAS

MAIN FLOOR PLAN  
 APPROX. 106 SQ. FT.

This plan is the property of Hayhoe Homes and any reproduction of this plan, its concepts or ideas, is strictly prohibited. Plans and specifications are approximate and are subject to change without notice. Finished area and room dimensions will change depending on front elevation selection.

E. & O.E. Created June 2016

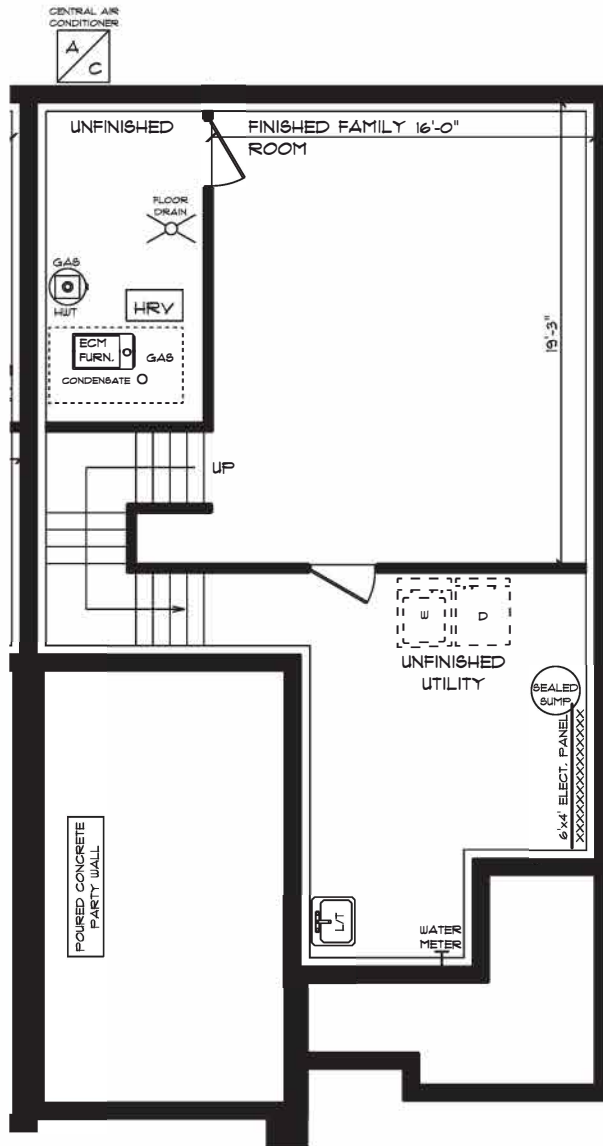


CONTEMPORARY TOWN  
 10-486 BURWELL ROAD, ST. THOMAS

SECOND FLOOR PLAN  
 APPROX. 976 SQ. FT.

This plan is the property of Hayhoe Homes and any reproduction of this plan, its concepts or ideas, is strictly prohibited. Plans and specifications are approximate and are subject to change without notice. Finished area and room dimensions will change depending on front elevation selection.

E. & O.E. Created June 2016



CONTEMPORARY TOWN  
 10-486 BURWELL ROAD, ST. THOMAS

LOWER LEVEL  
 APPROX. 321 SQ. FT.

This plan is the property of Hayhoe Homes and any reproduction of this plan, its concepts or ideas, is strictly prohibited. Plans and specifications are approximate and are subject to change without notice. Finished area and room dimensions will change depending on front elevation selection.

E. & O.E. Created June 2016