

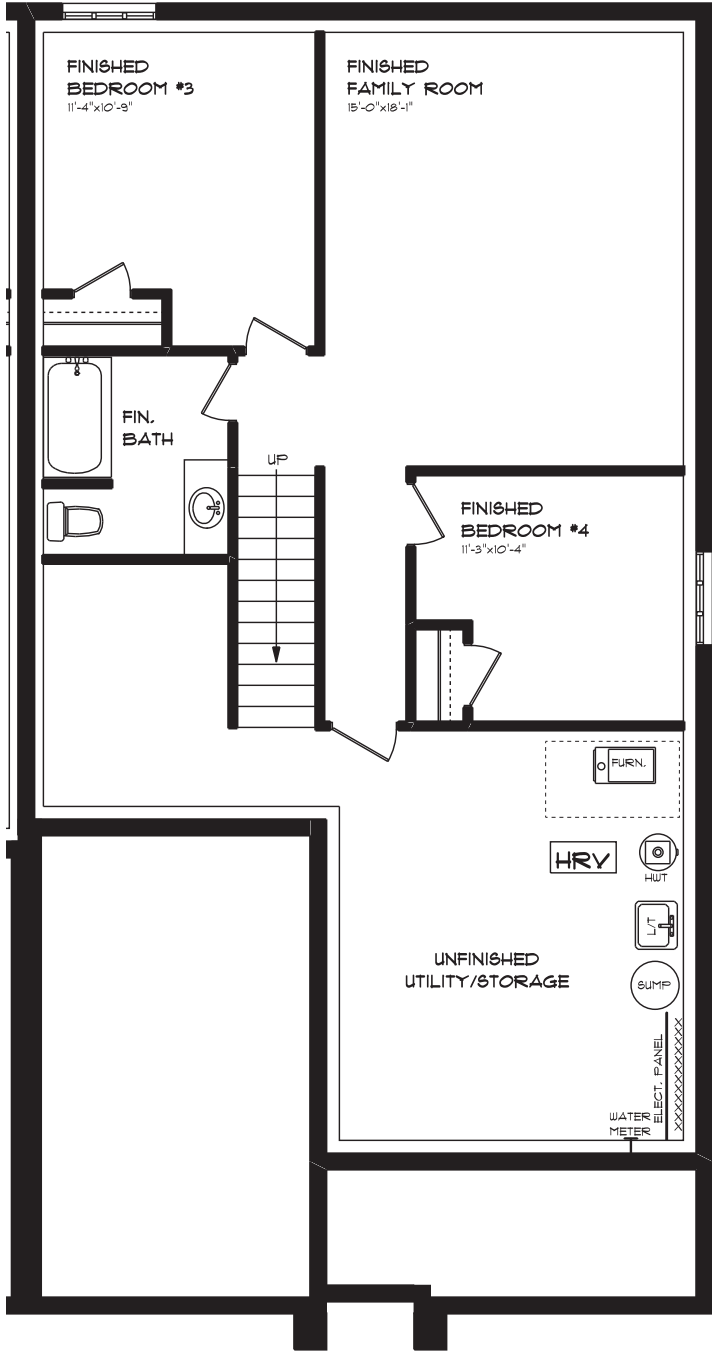


•12-101 NORTH STREET EAST

FRONT ELEVATION
APPROX. 1,949 TOTAL SQ. FT.

This plan is the property of Hayhoe Homes and any reproduction of this plan, its concepts or ideas, is strictly prohibited. Plans and specifications are approximate and are subject to change without notice. Finished area and room dimensions will change depending on front elevation selection. Copyright 2020.

E. & O.E.

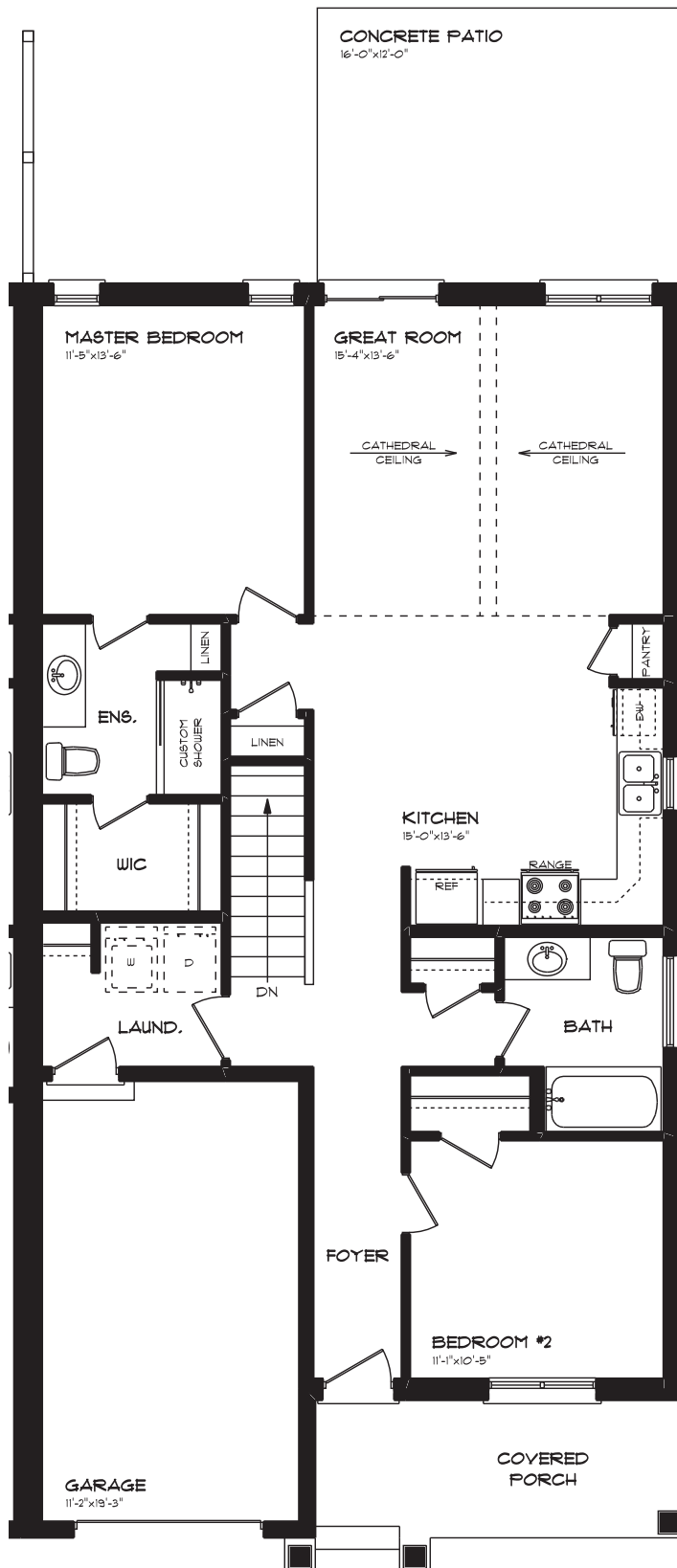


•12-101 NORTH STREET EAST

LOWER LEVEL PLAN
APPROX. 124 SQ. FT.

This plan is the property of Hayhoe Homes and any reproduction of this plan, its concepts or ideas, is strictly prohibited. Plans and specifications are approximate and are subject to change without notice. Finished area and room dimensions will change depending on front elevation selection. Copyright 2020.

E. & O.E.



#12-101 NORTH STREET EAST

MAIN FLOOR PLAN
APPROX. 1,225 SQ. FT.

This plan is the property of Hajjoe Homes and any reproduction of this plan, its concepts or ideas, is strictly prohibited. Plans and specifications are approximate and are subject to change without notice. Finished area and room dimensions will change depending on front elevation selection. Copyright 2010.

E. & O.E.