

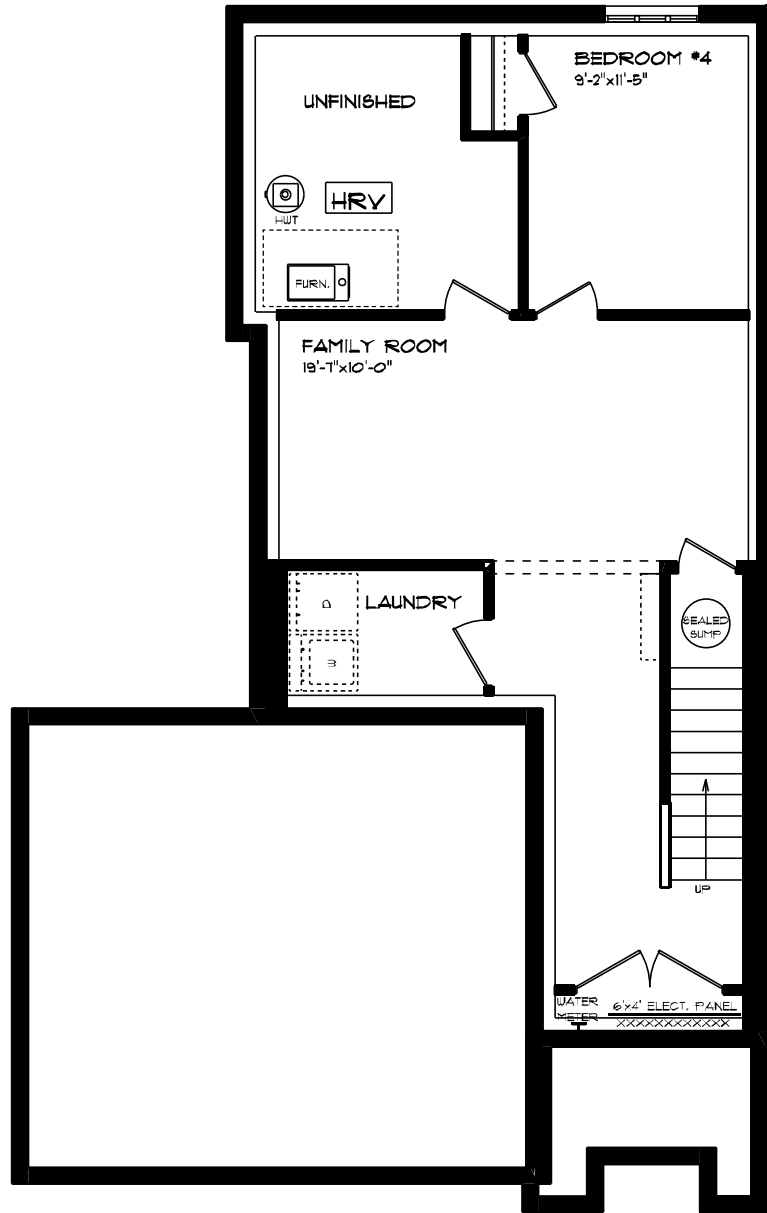


\*11-101 NORTH STREET EAST

FRONT ELEVATION  
APPROX. 2,154 SQ. FT.

This plan is the property of Haysco Homes and any reproduction of this plan, its contents or ideas, is strictly prohibited. Plans and specifications are approximate and are subject to change without notice. Finished area and room dimensions will change depending on floor elevation selection. Copyright 2000.

E. & O.E.

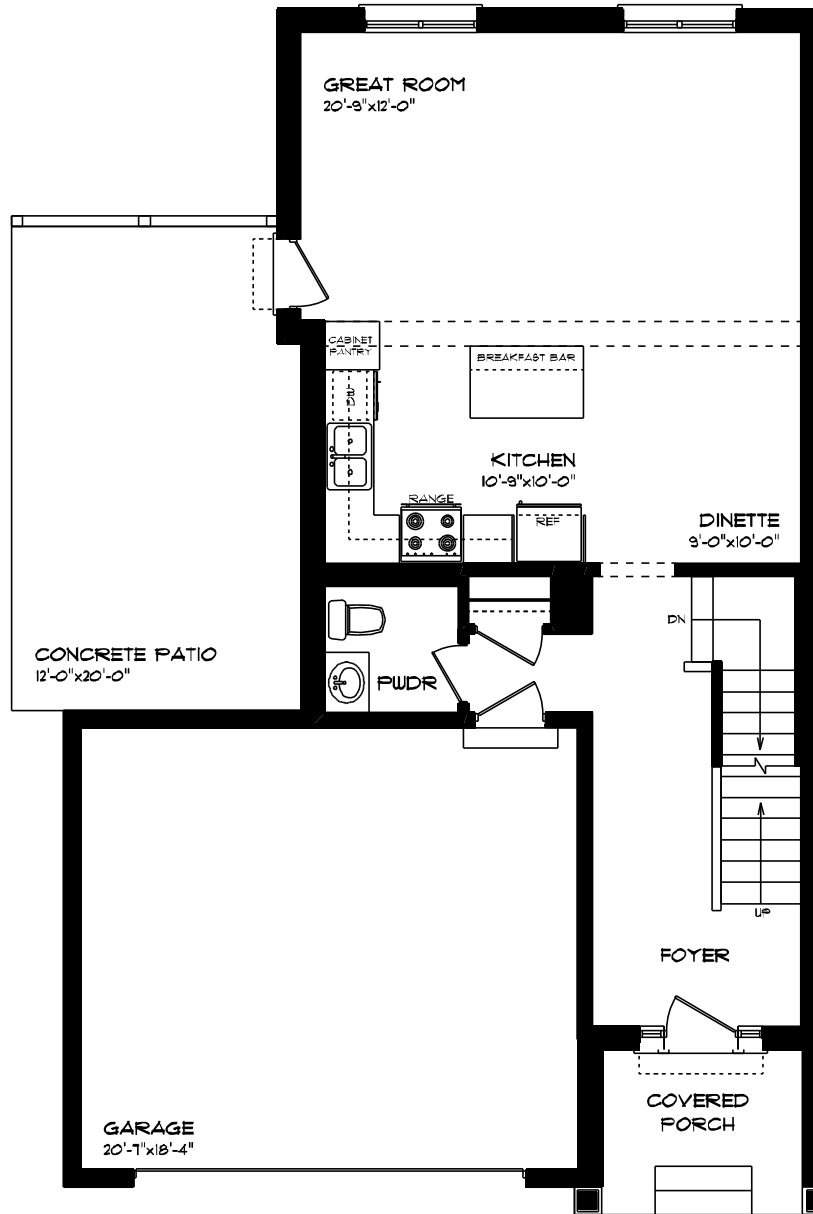


#77-101 NORTH STREET EAST

LOWER LEVEL  
 APPROX. 528 SQ. FT.

This plan is the property of Mayhew Homes and any reproduction of this plan, its concepts or details is strictly prohibited. Plans and specifications are approximate and are subject to change without notice. Finished area and room dimensions will change depending of from elevation selection. Copyright 2020.

E. & O.E.

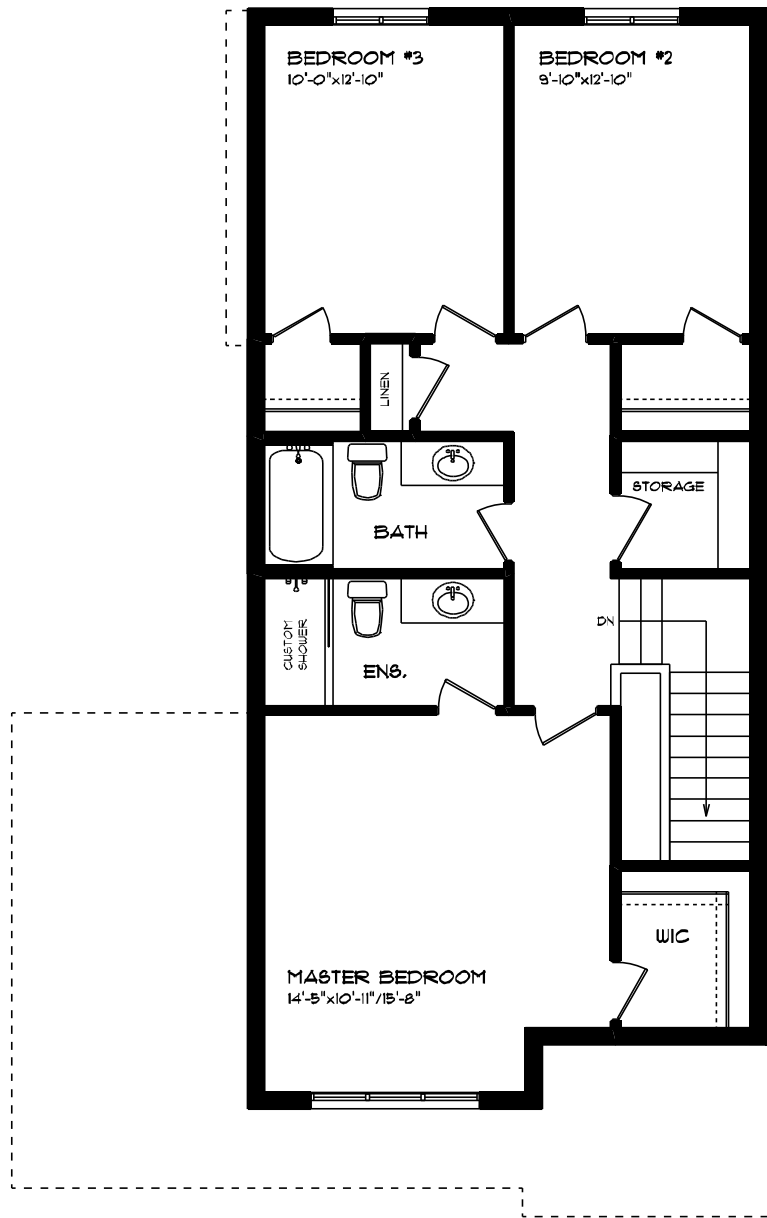


\*1101 NORTH STREET EAST

MAIN FLOOR PLAN  
 APPROX. 182 SQ. FT.

This plan is the property of Hedges Homes and any reproduction of this plan, its concepts or ideas, is strictly prohibited. Plans and specifications are approximate and are subject to change without notice. Finished area and room dimensions will change depending on front elevation selection. Copyright 2020.

E. & O.E.



\*1101 NORTH STREET EAST

**SECOND FLOOR PLAN  
APPROX. 844 SQ. FT.**

This plan is the property of Hylton Homes and any reproduction of this plan, its concepts or ideas, is strictly prohibited. Plans and specifications are approximate and are subject to change without notice. Finished area and room dimensions will change depending of their elevation selection. Copyright 2020.

**E. & O.E.**