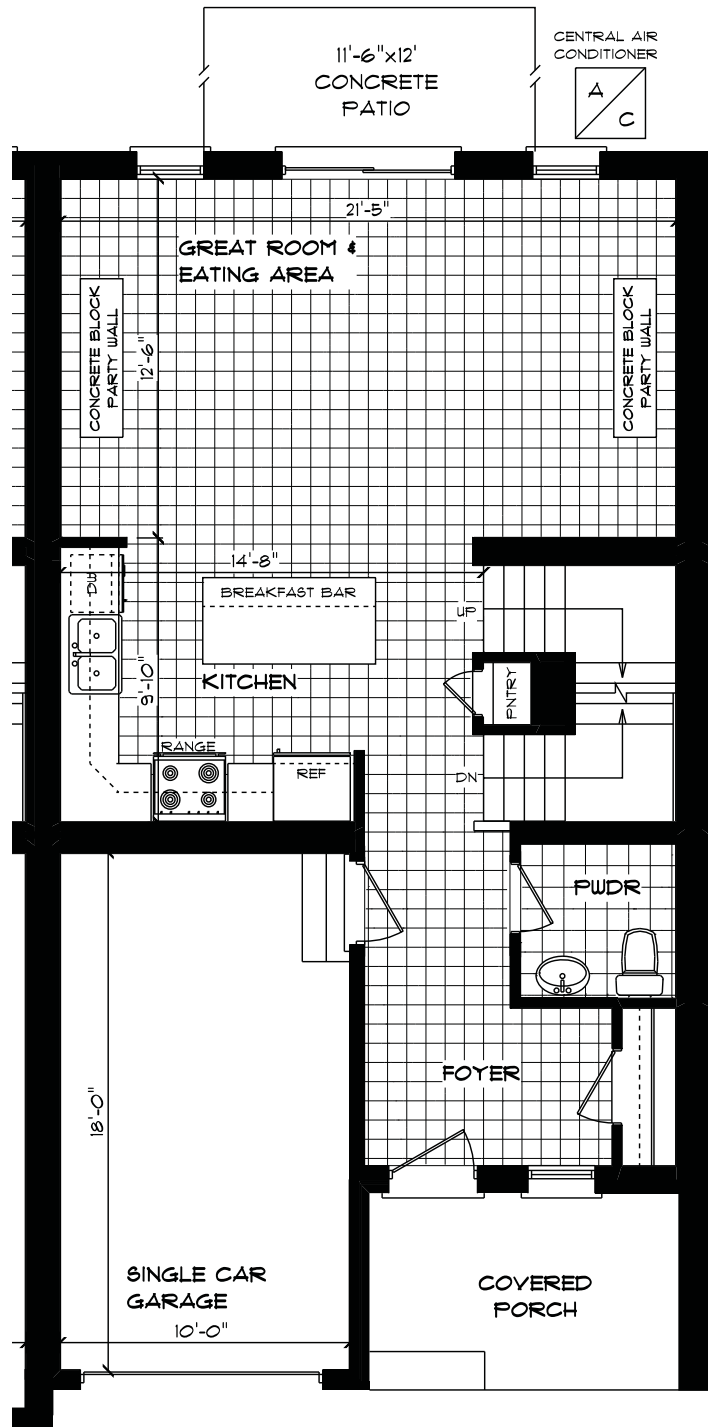




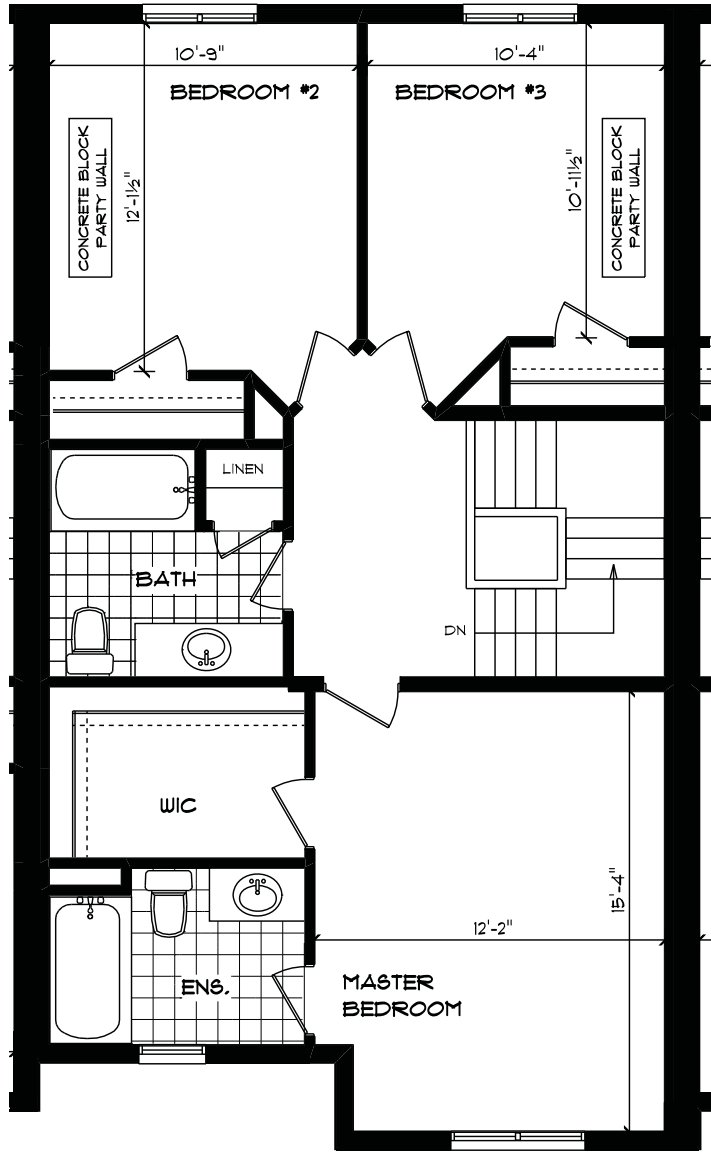
*173 PEACH TREE BLVD., ST. THOMAS
FRONT ELEVATION
APPROX. 1,821 TOTAL SQ. FT.
(4 Bedroom, 3.5 Bathroom)

E. & O.E. Created June 2015



#173 PEACH TREE BLVD., ST. THOMAS
 MAIN FLOOR PLAN
 APPROX. 692 SQ. FT.

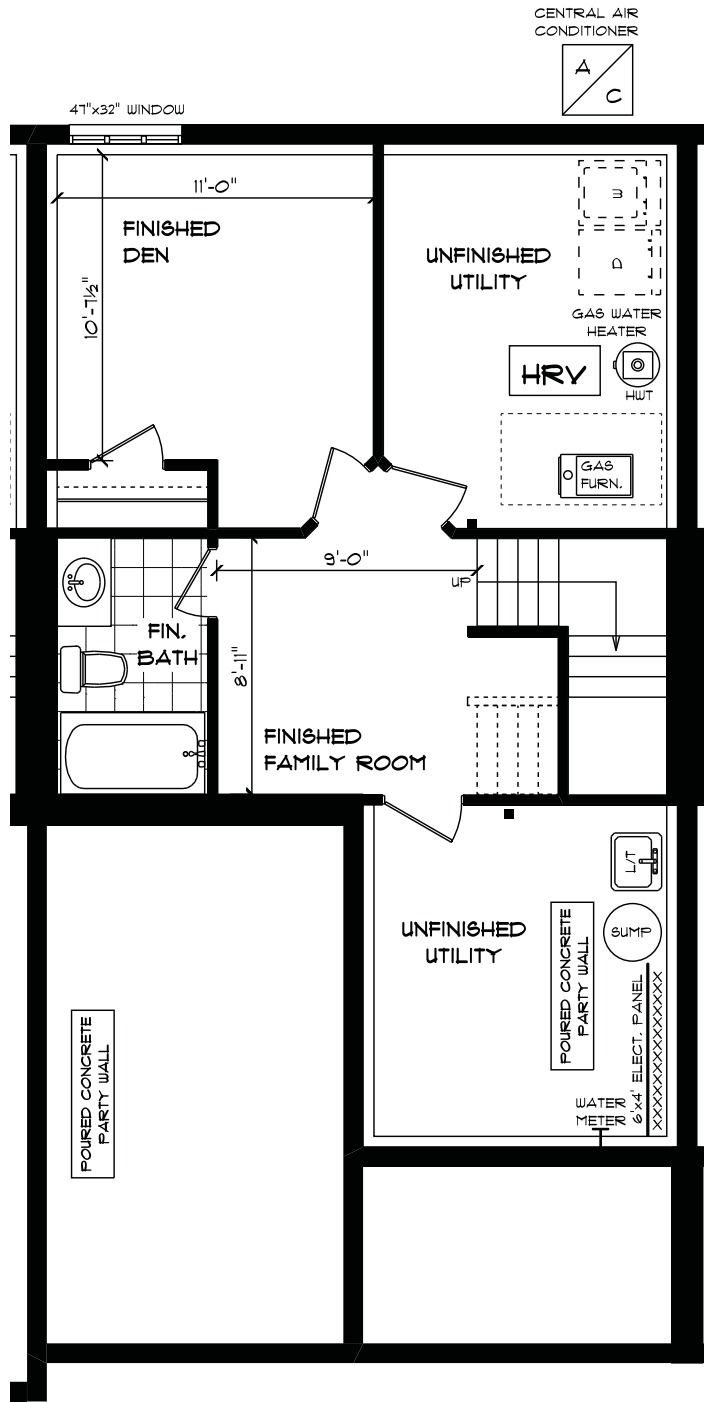
E. & O.E. Created June 2015



#173 PEACH TREE BLVD., ST. THOMAS
 SECOND FLOOR PLAN
 APPROX. 803 SQ. FT.

E. & O.E. Created June 2015





*173 PEACH TREE BLVD., ST. THOMAS
 LOWER LEVEL PLAN
 APPROX. 326 SQ. FT.

E. & O.E. Created June 2015