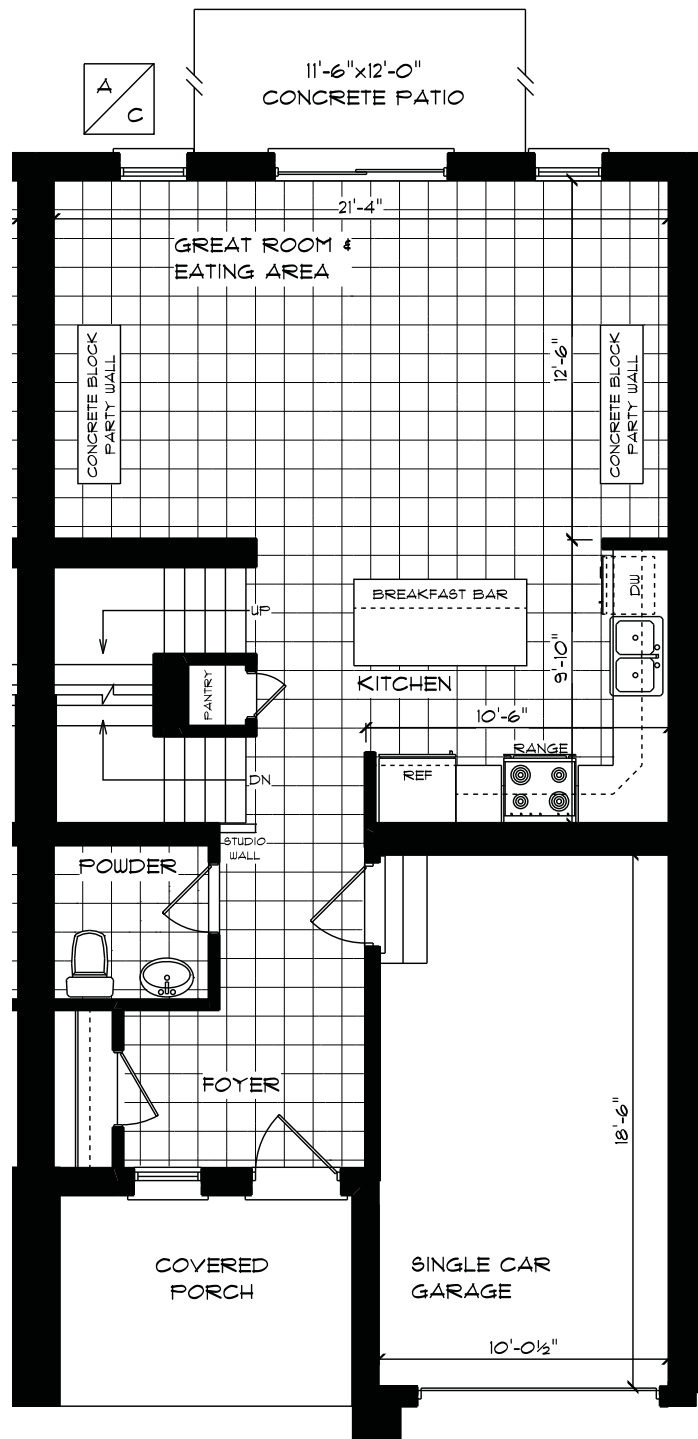




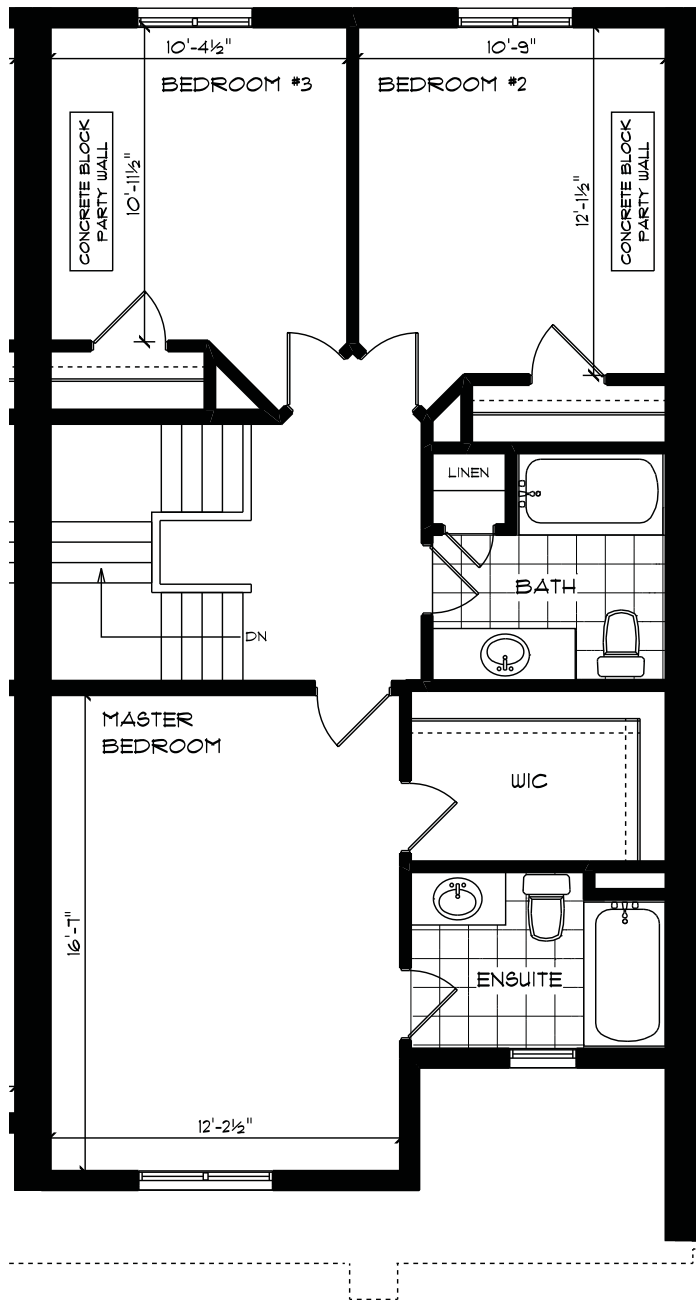
*183 PEACH TREE BLVD., ST. THOMAS
FRONT ELEVATION
APPROX. 1,845 TOTAL SQ. FT.
(4 Bedroom, 3.5 Bathroom)

E. & O.E. Created September 2015



*183 PEACH TREE BLVD., ST. THOMAS
 MAIN FLOOR PLAN
 APPROX. 692 SQ. FT.

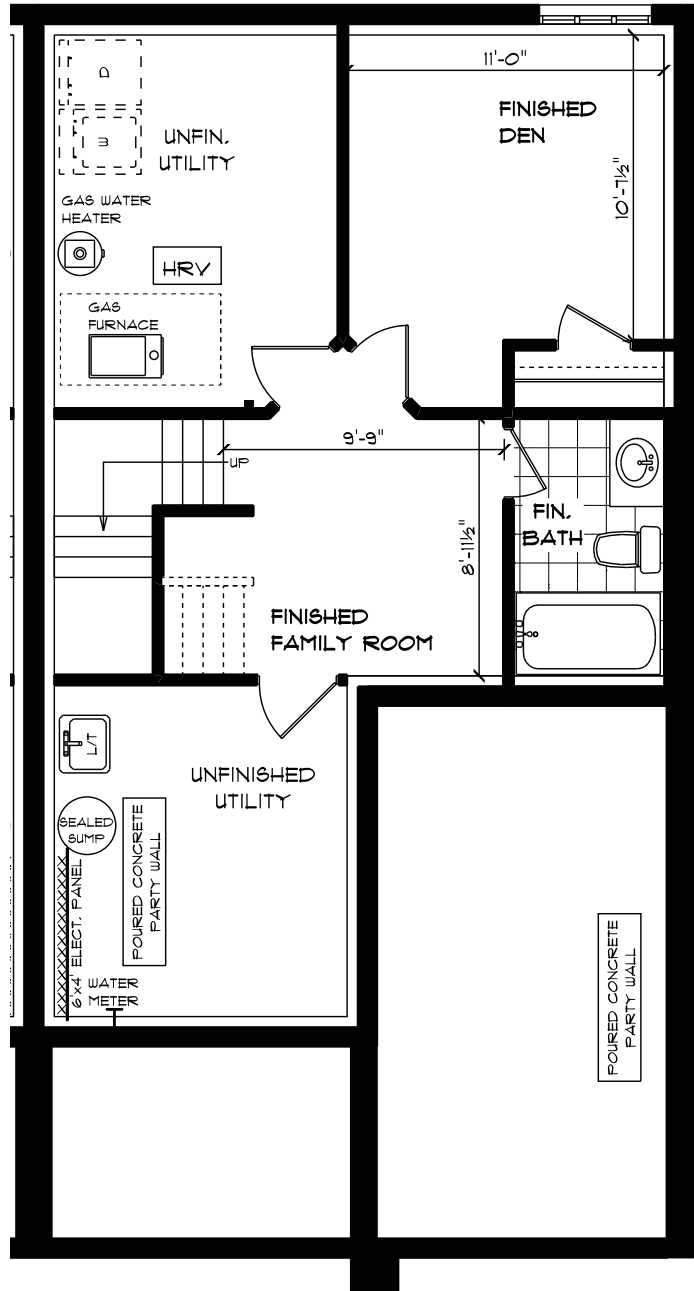
E. & O.E. Created September 2015



*183 PEACH TREE BLYD., ST. THOMAS
 SECOND FLOOR PLAN
 APPROX. 821 SQ. FT.

E. & O.E. Created September 2015

CENTRAL AIR
CONDITIONER



#183 PEACH TREE BLVD., ST. THOMAS
LOWER LEVEL PLAN
APPROX. 326 SQ. FT.

E. & O.E. Created September 2015