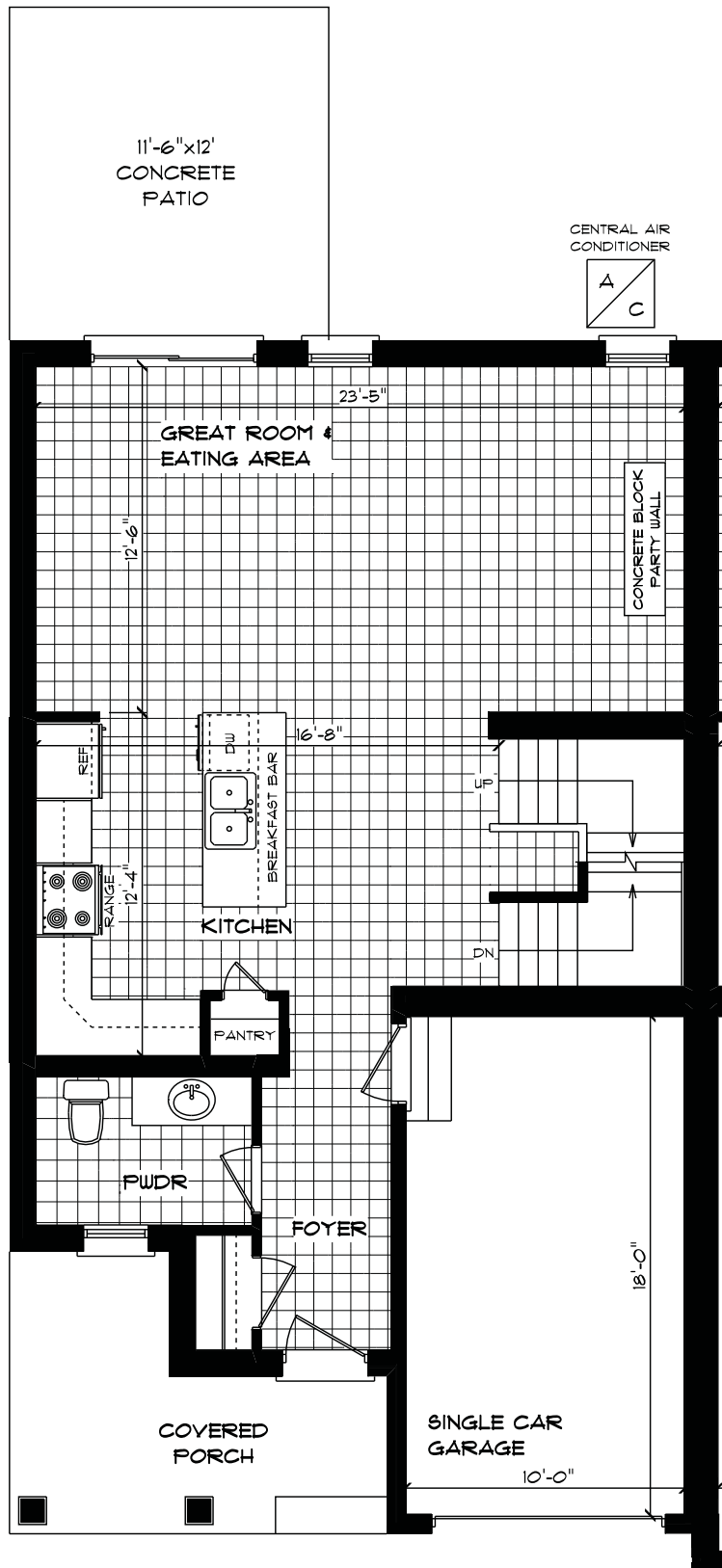




*192 PEACH TREE BLYD., ST. THOMAS
FRONT ELEVATION
APPROX. 2,095 TOTAL SQ. FT.
(4 Bedroom, 3.5 Bathroom)

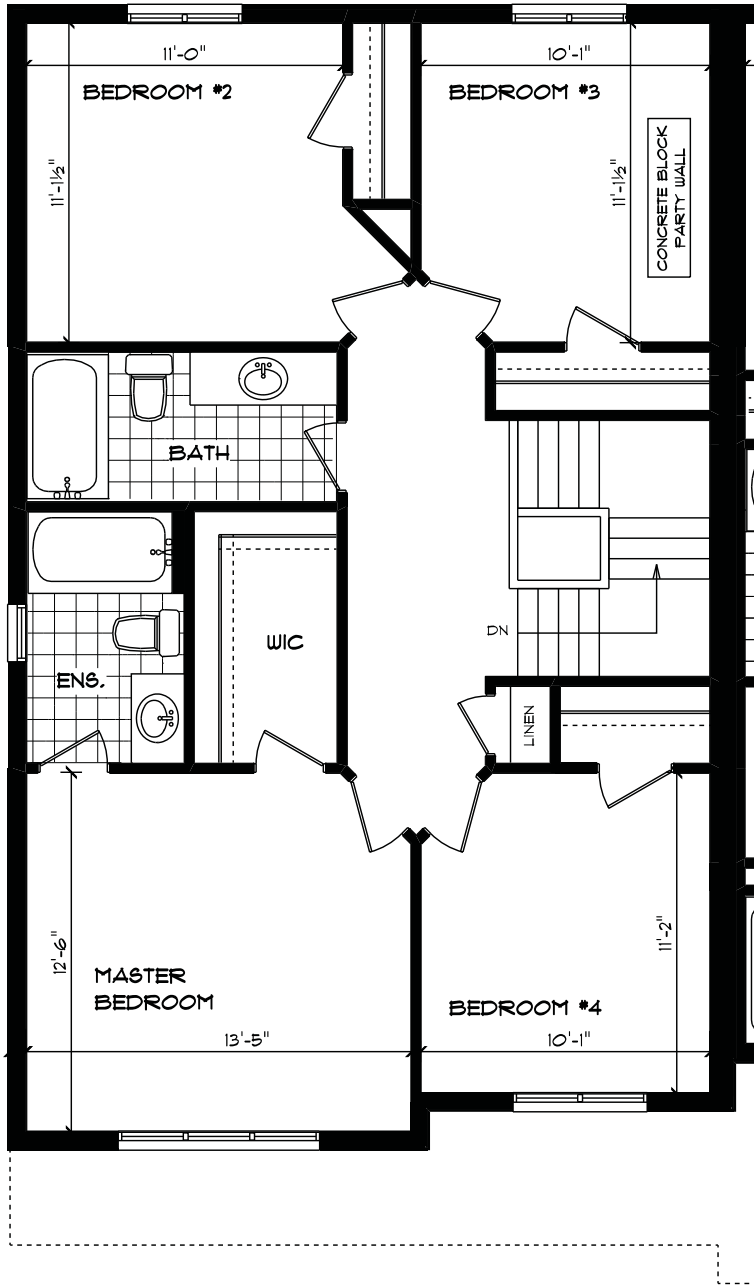
E. & O.E. Created May 2015



#192 PEACH TREE BLVD., ST. THOMAS
MAIN FLOOR PLAN
APPROX. 161 SQ. FT.

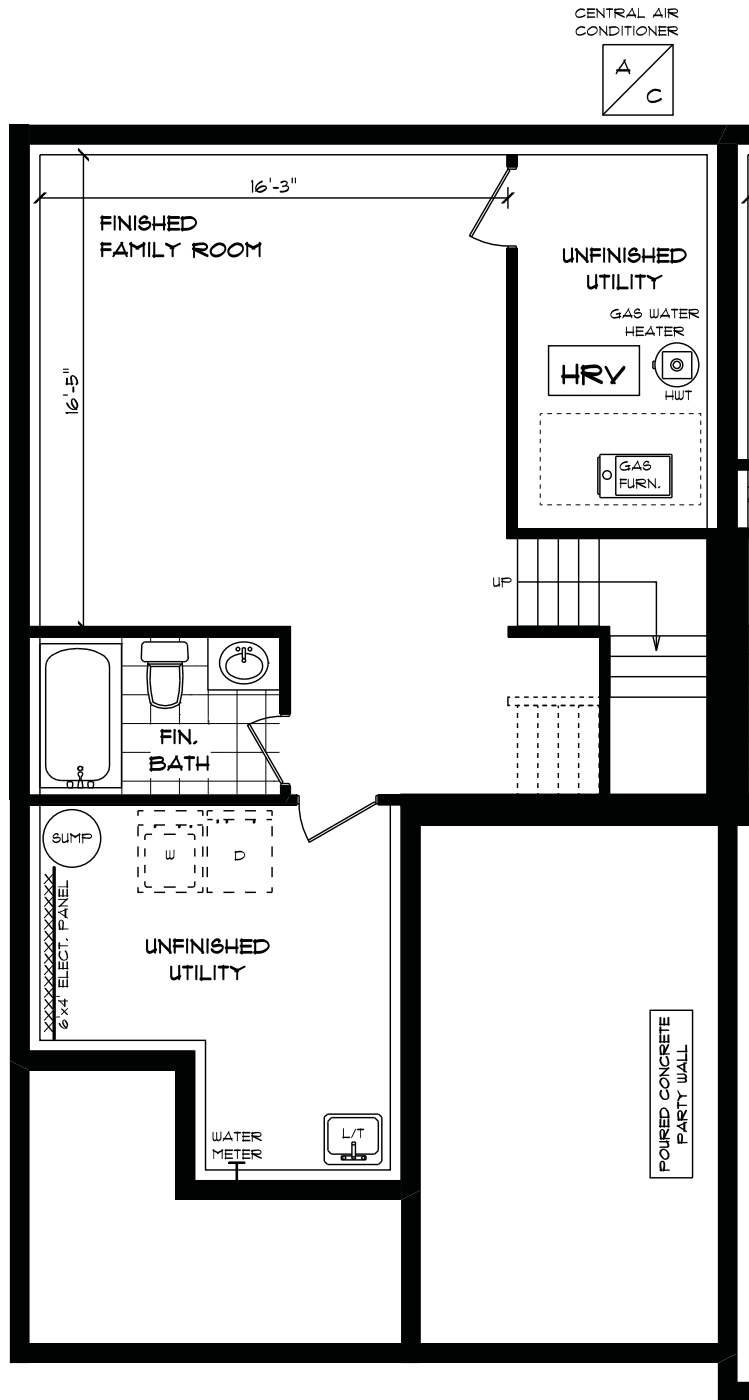
E. & O.E. Created May 2015

HAYHOE™
RENTALS



*192 PEACH TREE BLVD., ST. THOMAS
 SECOND FLOOR PLAN
 APPROX. 916 SQ. FT.

E. & O.E. Created May 2015



#192 PEACH TREE BLVD., ST. THOMAS
 LOWER LEVEL PLAN
 APPROX. 412 SQ. FT.

E. & O.E. Created May 2015