



# DAWSON

## FRONT ELEVATION 'A'

This plan is the property of Hayhoe Homes and any reproduction of this plan, its concepts or ideas, is strictly prohibited. Plans and specifications are approximate and are subject to change without notice. Finished area and room dimensions will change depending on front elevation selection. E.40.E. Copyright 2019.

CREATED FEB. 2020

**HAYHOE**<sup>™</sup>  
—HOMES—



# DAWSON

## FRONT ELEVATION 'B'

**HAYHOE™**  
—HOMES—

This plan is the property of Hayhoe Homes and any reproduction of this plan, its concepts or ideas, is strictly prohibited. Plans and specifications are approximate and are subject to change without notice. Finished area and room dimensions will change depending on front elevation selection. E.A.O.E. Copyright 2019.

CREATED FEB. 2020



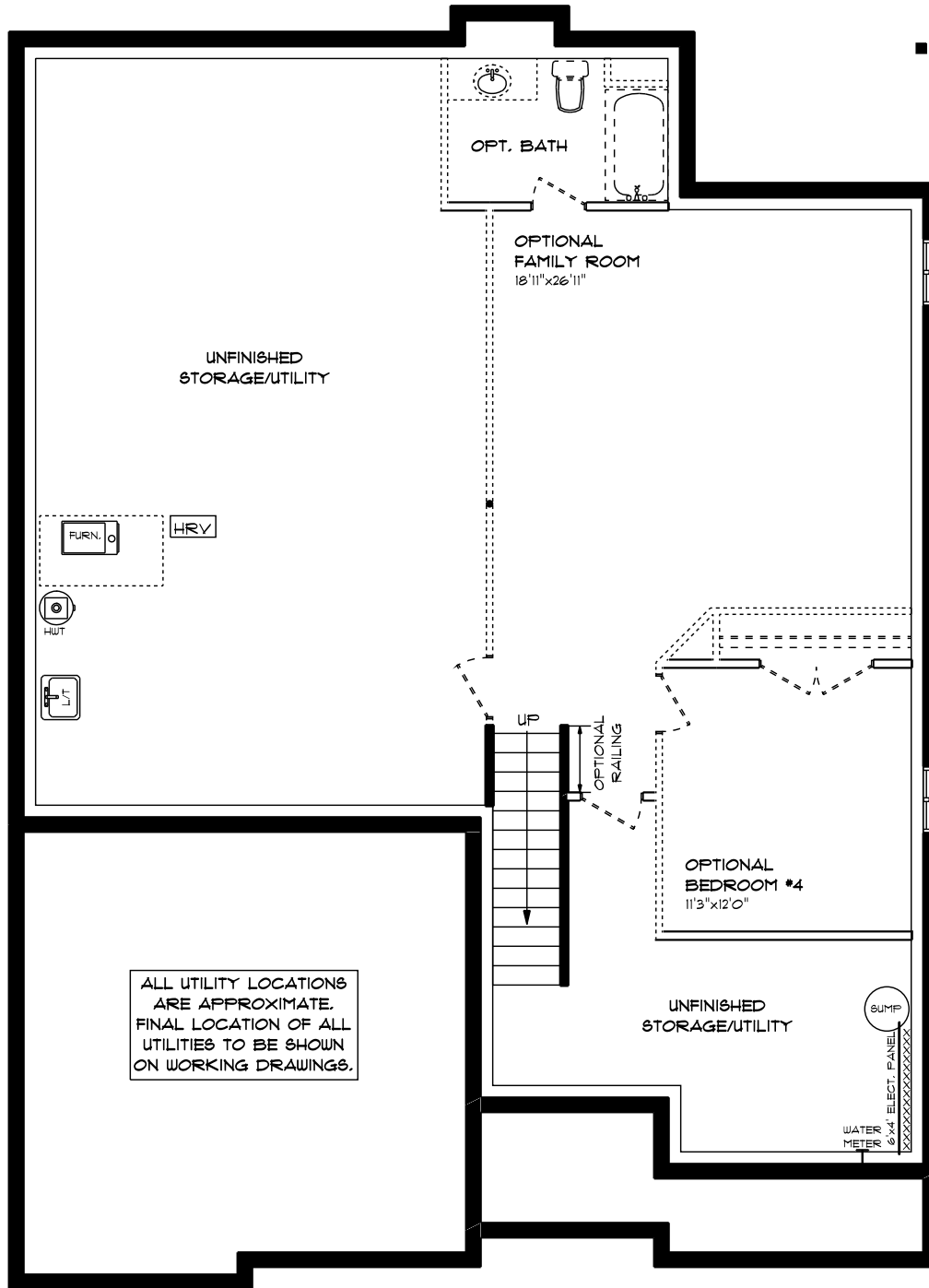
# DAWSON

## FRONT ELEVATION 'C'

**HAYHOE™**  
—HOMES—

This plan is the property of Hayhoe Homes and any reproduction of this plan, its concepts or ideas, is strictly prohibited. Plans and specifications are approximate and are subject to change without notice. Finished area and room dimensions will change depending on front elevation selection. E.40.E. Copyright 2019.

CREATED FEB. 2020



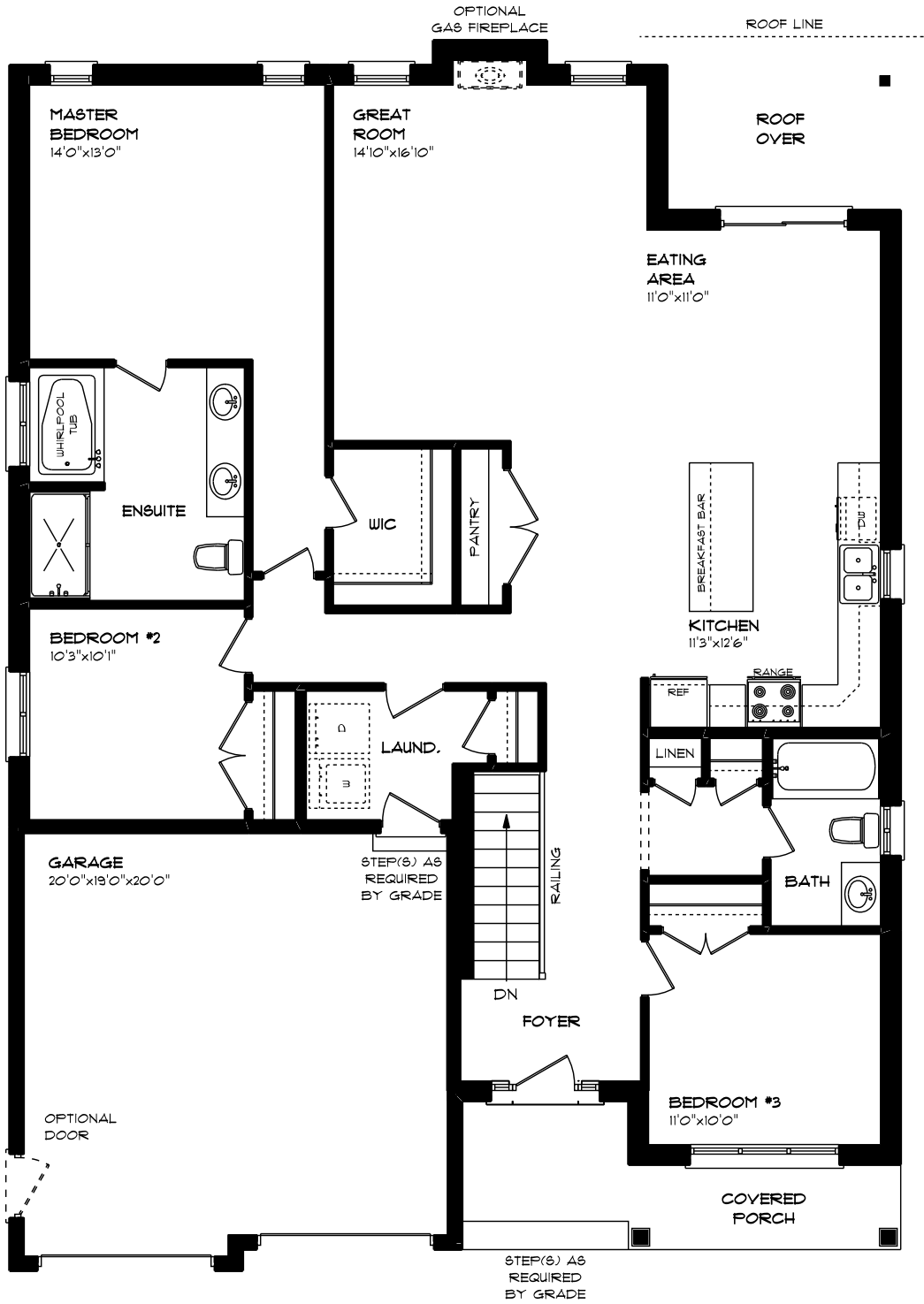
DAWSON

HAYHOE™  
HOMES

LOWER LEVEL PLAN 'A'  
UNFINISHED

This plan is the property of Hayhoe Homes and any reproduction of this plan, its concepts or ideas, is strictly prohibited. Plans and specifications are approximate and are subject to change without notice. Finished area and room dimensions will change depending on front elevation selection. E.A.O.E Copyright 2019

CREATED FEB. 2020



**DAWSON**

**MAIN FLOOR PLAN 'A'**

APPROX. 1,754 SQ. FT.



This plan is the property of Hayhoe Homes and any reproduction of this plan, its concepts or ideas, is strictly prohibited. Plans and specifications are approximate and are subject to change without notice. Finished area and room dimensions will change depending on front elevation selection. E.40.E. Copyright 2019.

CREATED FEB. 2020