



# HUNTINGTON

## FRONT ELEVATION 'A'

**HAYHOE™**  
—HOMES—

This plan is the property of Hayhoe Homes and any reproduction of this plan, its concepts or ideas, is strictly prohibited. Plans and specifications are approximate and are subject to change without notice. Finished area and room dimensions will change depending on front elevation selection. E.O.E. Copyright 2019.

CREATED FEB. 2020



# HUNTINGTON

## FRONT ELEVATION 'B'

This plan is the property of Hayhoe Homes and any reproduction of this plan, its concepts or ideas, is strictly prohibited. Plans and specifications are approximate and are subject to change without notice. Finished area and room dimensions will change depending on front elevation selection. E.A.O.E. Copyright 2019.

CREATED FEB. 2020

**HAYHOE™**  
—HOMES—



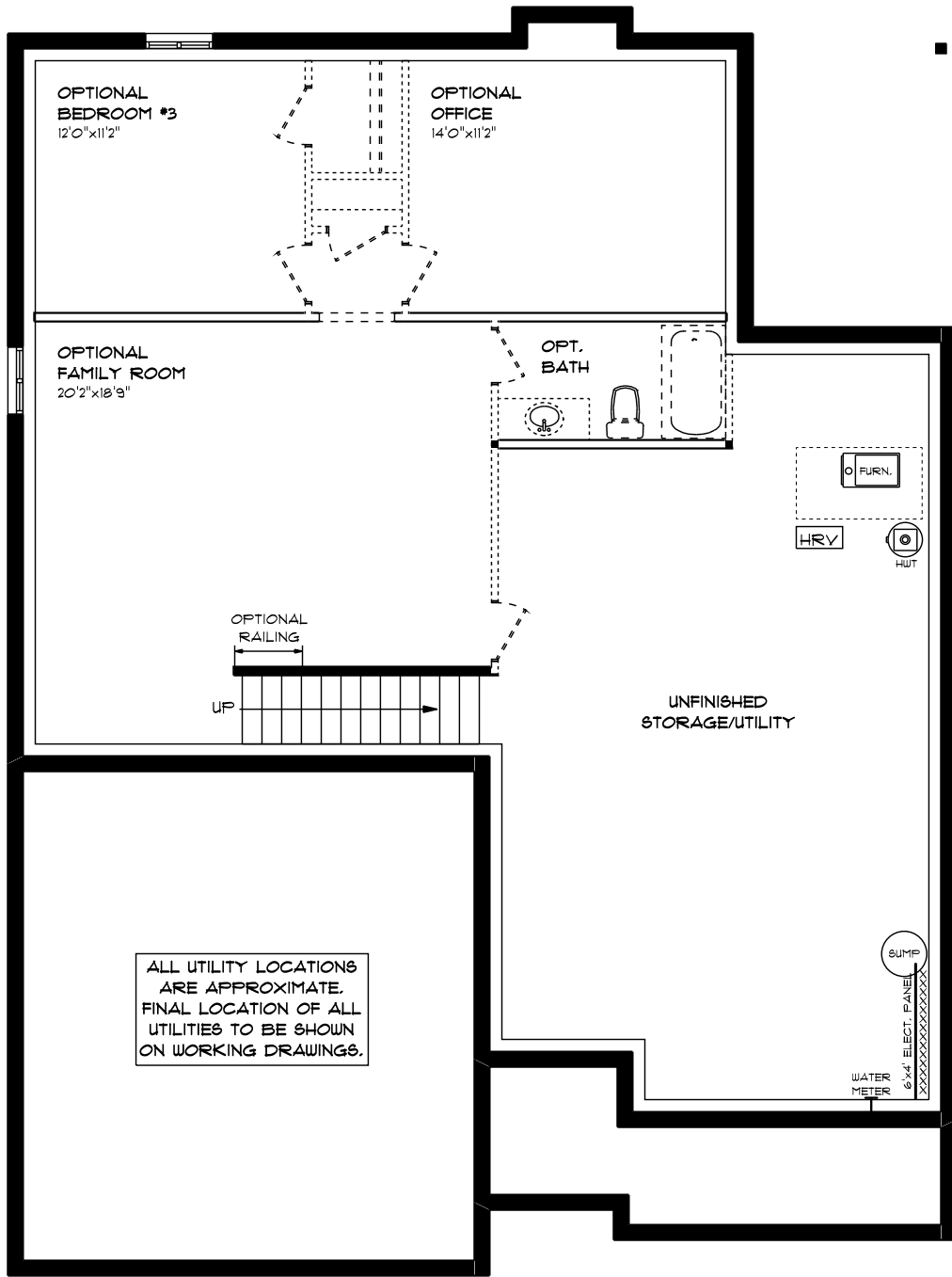
# HUNTINGTON

## FRONT ELEVATION 'C'

This plan is the property of Hayhoe Homes and any reproduction of this plan, its concepts or ideas, is strictly prohibited. Plans and specifications are approximate and are subject to change without notice. Finished area and room dimensions will change depending on front elevation selection. E.A.O.E. Copyright 2019.

CREATED FEB. 2020

**HAYHOE™**  
—HOMES—



# HUNTINGTON

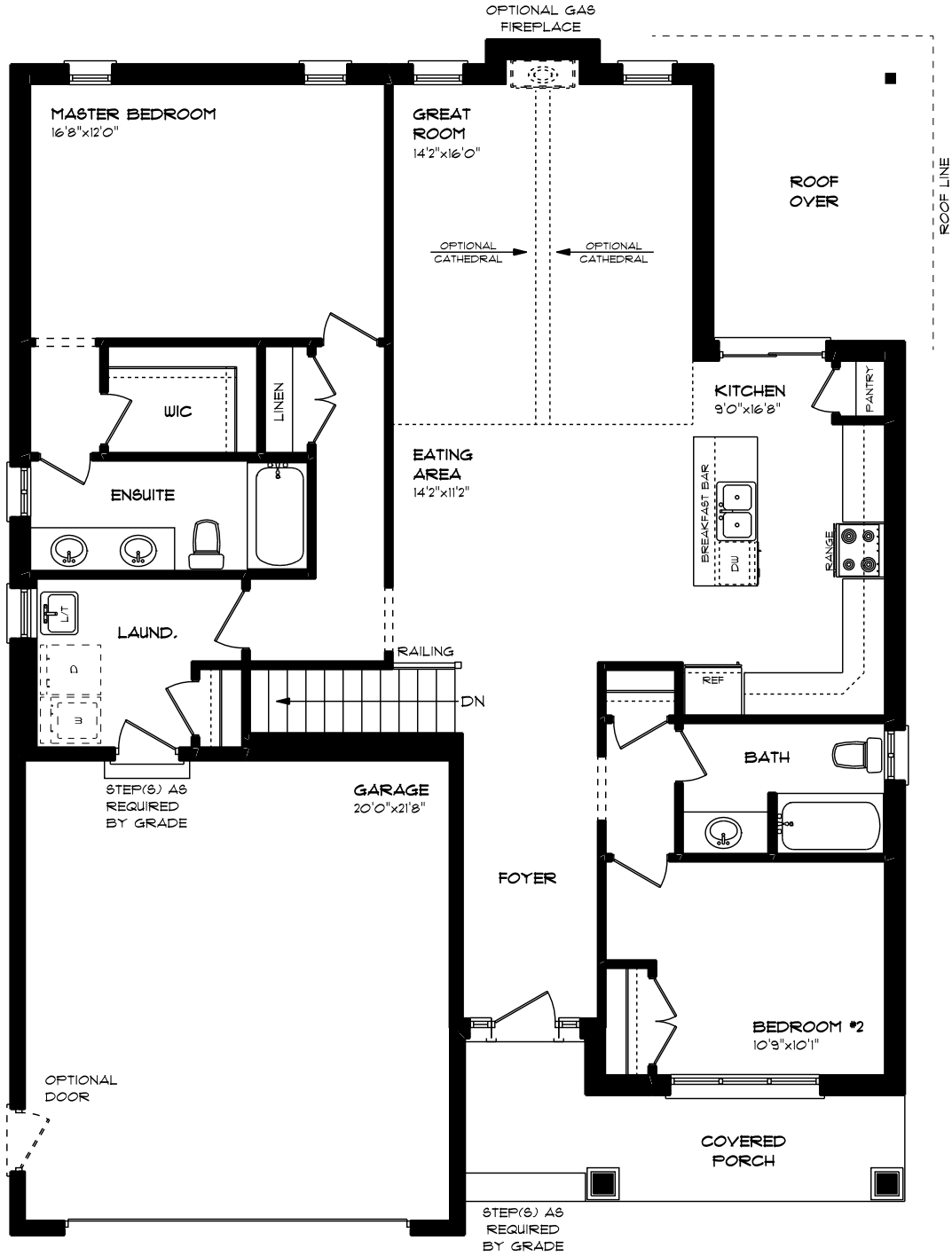
## LOWER LEVEL PLAN 'A'

UNFINISHED



This plan is the property of Hayhoe Homes and any reproduction of this plan, its concepts or ideas, is strictly prohibited. Plans and specifications are approximate and are subject to change without notice. Finished area and room dimensions will change depending on front elevation selection. E.A.O.E. Copyright 2019.

CREATED FEB. 2020



# HUNTINGTON

## MAIN FLOOR PLAN 'A'

APPROX. 1,576 SQ. FT.

**HAYHOE™**  
—HOMES—

This plan is the property of Hayhoe Homes and any reproduction of this plan, its concepts or ideas, is strictly prohibited. Plans and specifications are approximate and are subject to change without notice. Finished area and room dimensions will change depending on front elevation selection. E.A.E. Copyright 2019.

CREATED FEB. 2020