

# INVENTORY HOME



## 25 DUNNING WAY

ORCHARD PARK MEADOWS, ST. THOMAS

### THE DETAILS

PRICE	\$ 809,000
CLOSING DATE	MAY 16, 2025
LOT NUMBER	13
BEDROOMS	3
BATHS	2
SQFT	1428
GARAGE	2
MODEL	HAMILTON

**HAYHOE™**  
— HOMES —



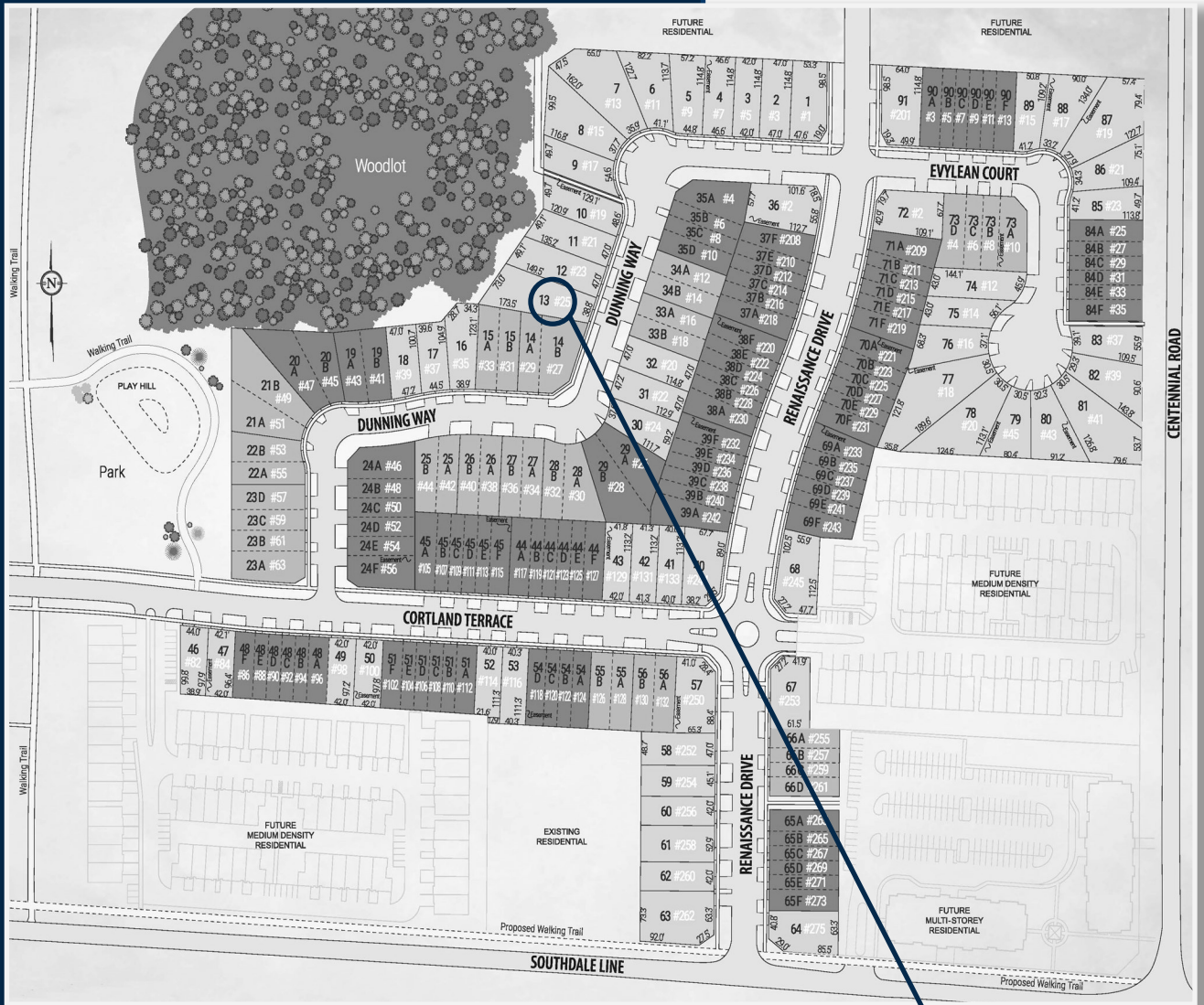
### SALES PROFESSIONAL

DAVE MATTHEWS

519.633.9215

dave.matthews@hayhoehomes.com

# SITE PLAN

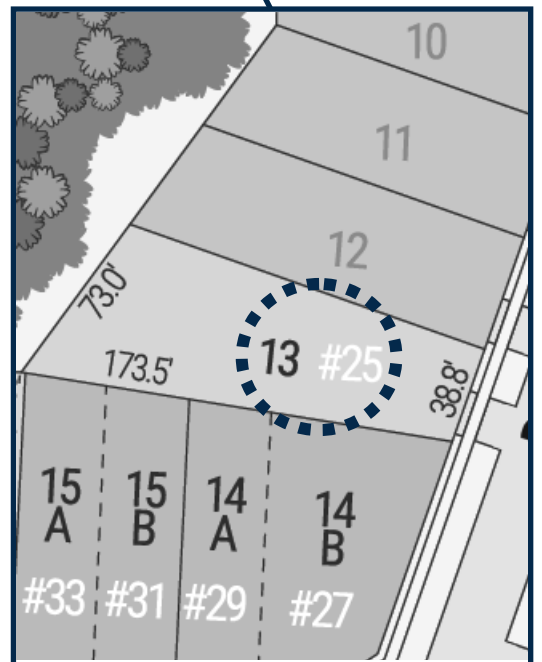


## 25 DUNNING

### EXTERIOR FEATURES:

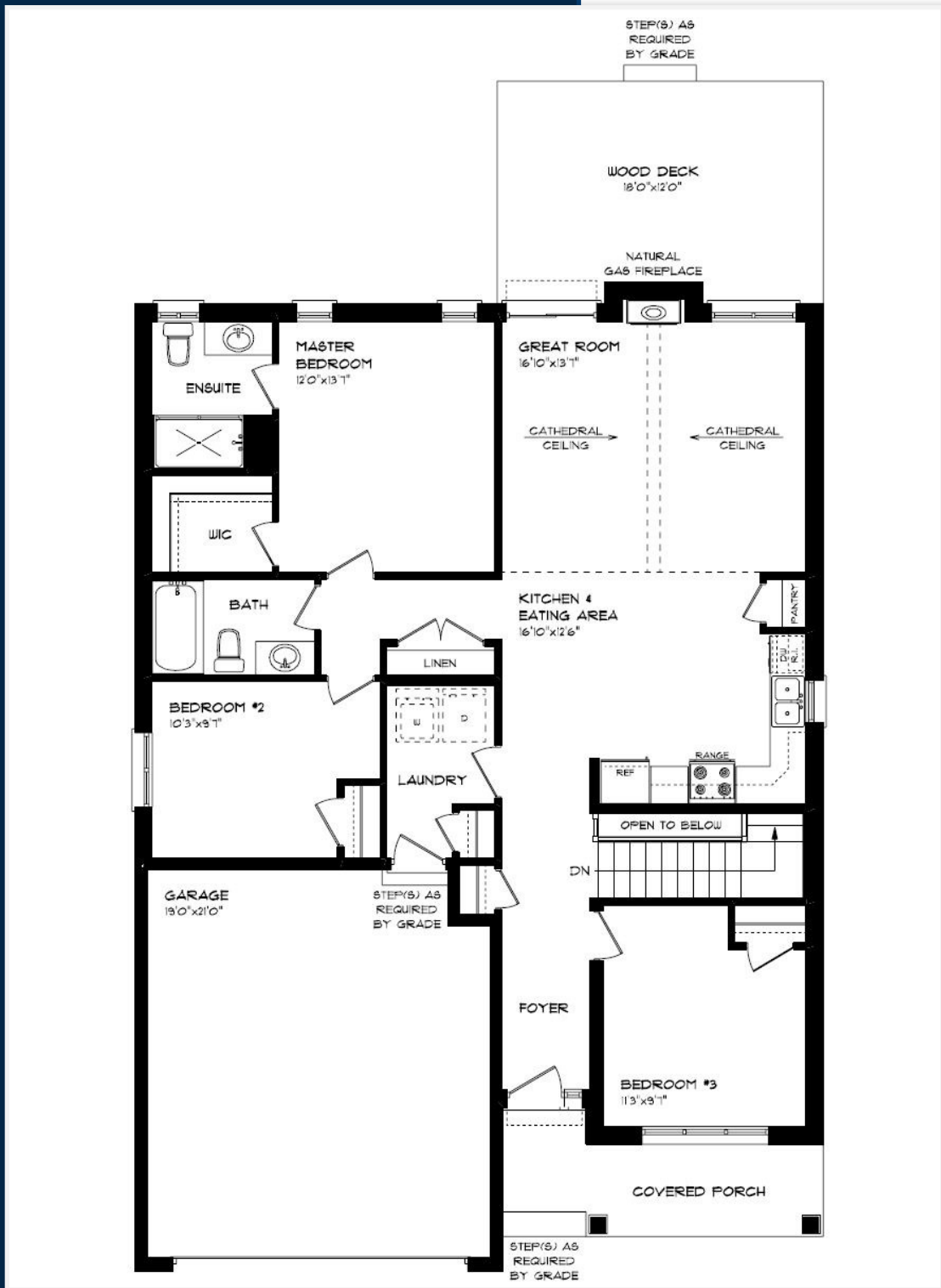
- KEYLESS ENTRY
- TREATED WOOD DECK
- BBQ GAS LINE
- ASPHALT DRIVEWAY
- WALKING TRAILS

**HAYHOE™**  
HOMES



# MAIN FLOOR

25 DUNNING WAY, ST. THOMAS



DOUBLE CAR GARAGE

LVP FLOORING

PANTRY

QUARTZ COUNTERTOPS

CATHEDRAL CEILING

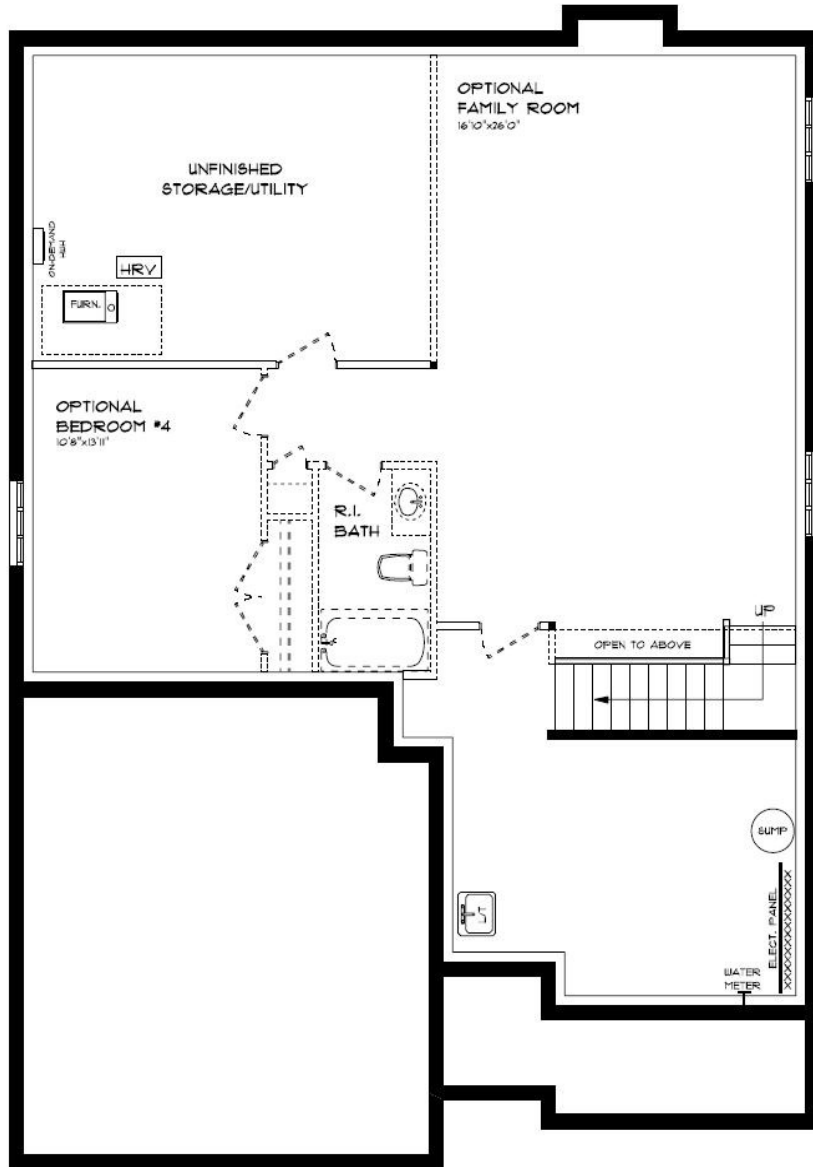
KITCHEN BACKSPLASH

MAIN FLOOR:  
APPROX 1428 SQFT

**HAYHOE**<sup>TM</sup>  
— HOMES —

# BASEMENT

25 DUNNING WAY, ST. THOMAS



BASEMENT:  
UNFINISHED

AIR CONDITIONING  
GAS FURNACE WITH HRV  
FLOW-THROUGH HUMIDIFIER  
NEW HOME WARRANTY

**HAYHOE™**  
— HOMES —



# EXTERIOR FINISHES

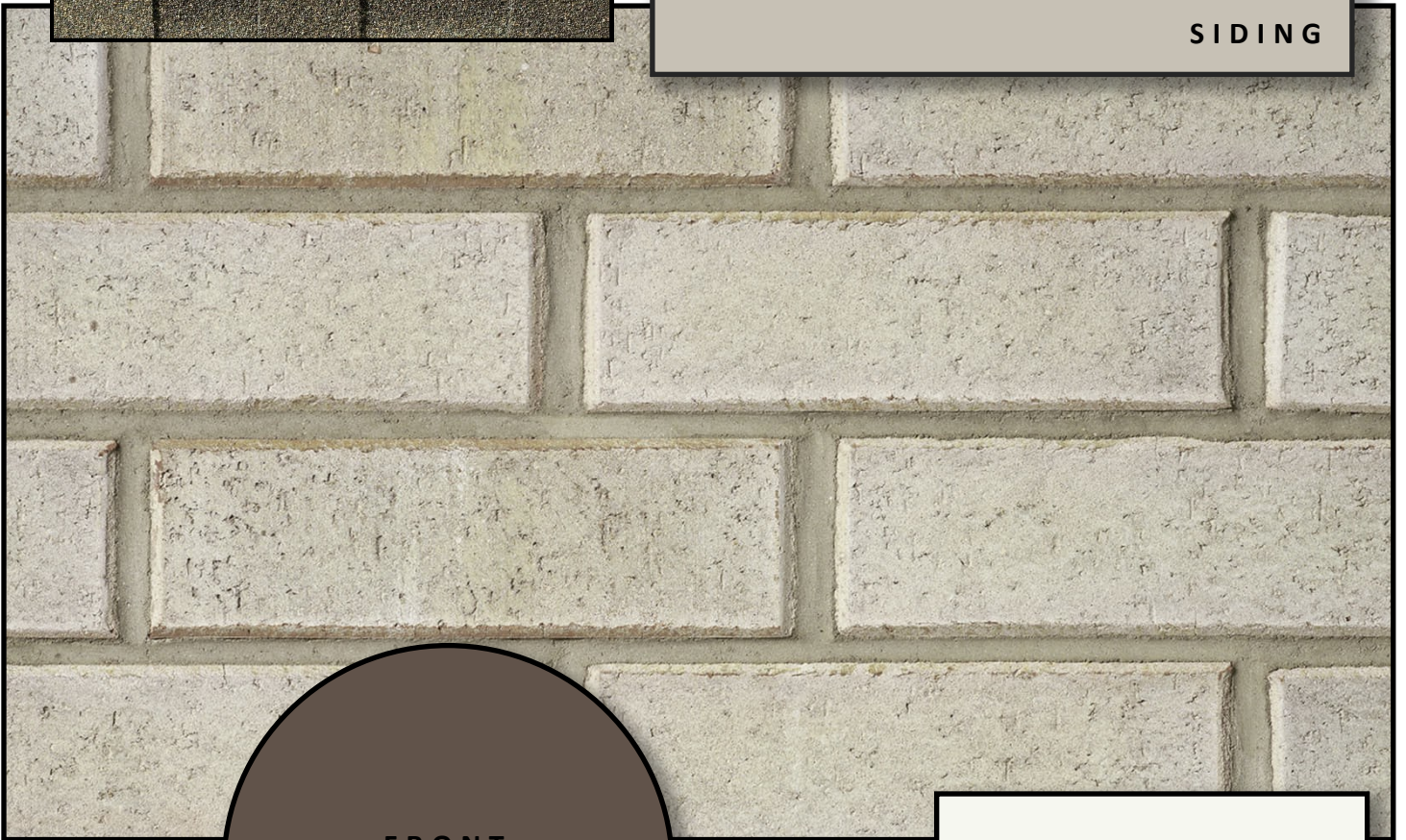
SHINGLES



25 DUNNING WAY



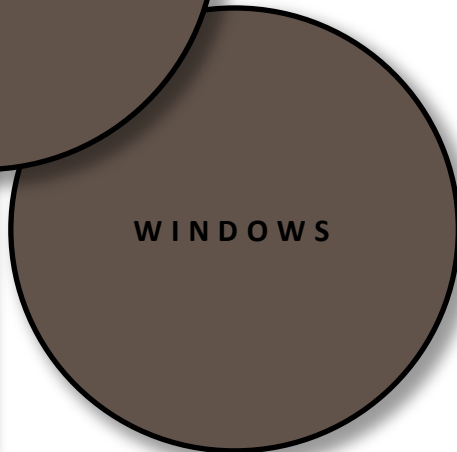
SIDING



BRICK

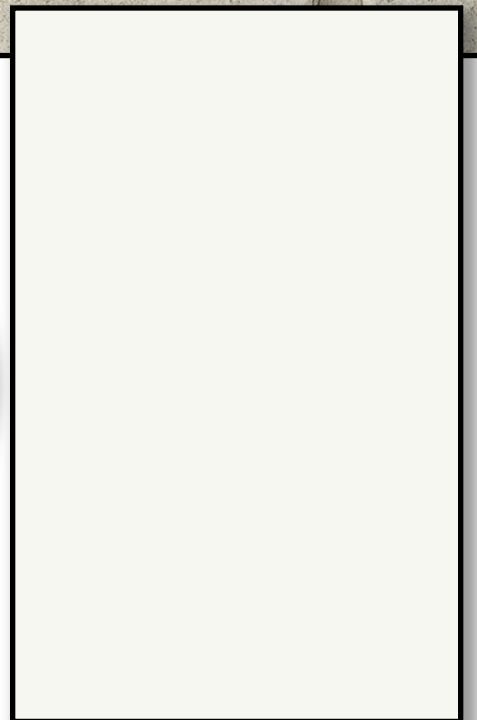


FRONT  
DOOR



WINDOWS

GARAGE DOOR



ALUMINUM

**HAYHOE™**  
— HOMES —



# INTERIOR FINISHES

## 25 DUNNING WAY

KITCHEN BACKSPLASH



QUARTZ KITCHEN  
COUNTERTOPS



LUXURY VINYL PLANK



PAINT  
COLOUR



PAINTED KITCHEN  
LOWERS



PAINTED KITCHEN  
UPPERS



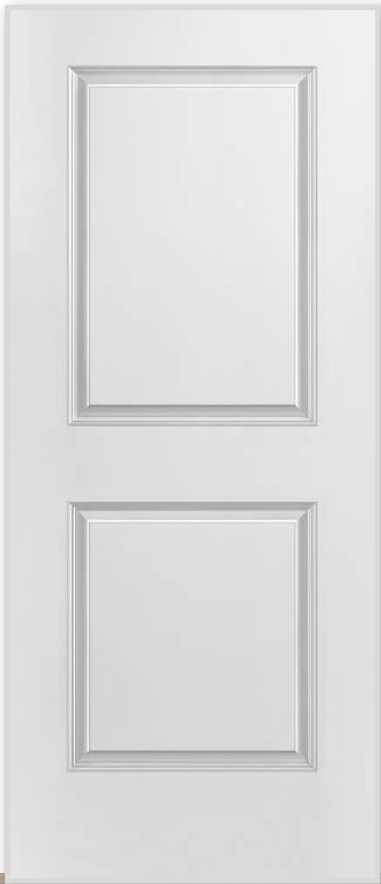
**HAYHOE™**  
HOMES

PRICE, PRODUCTS, COLOURS & FEATURES ARE SUBJECT TO CHANGE WITHOUT NOTICE.

# INTERIOR FINISHES

## 25 DUNNING WAY

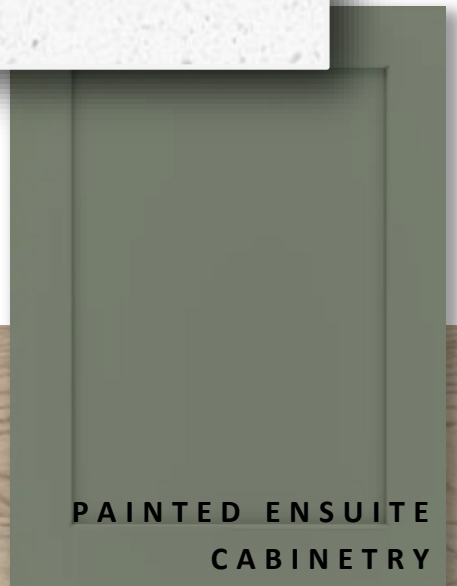
INTERIOR DOOR STYLE



LAMINATE ENSUITE  
COUNTERTOP



PAINTED ENSUITE  
CABINETY



LAMINATE  
MAIN BATH  
COUNTERTOP



PAINTED MAIN  
BATH CABINETY



LUXURY VINYL PANK

**HAYHOE™**  
—HOMES—