

SEMI-DETACHED



ESSENTIAL FEATURES

27 DUNNING WAY

ORCHARD PARK MEADOWS, ST. THOMAS

THE DETAILS

PRICE	\$ 565,000
CLOSING DATE	JUNE 27, 2025
LOT NUMBER	14B
BEDROOMS	2
BATHS	2
SQFT	1225
GARAGE	1
MODEL	SEMI-DETACHED

HAYHOE™
— HOMES —



SALES PROFESSIONAL

DAVE MATTHEWS

519.633.9215

dave.matthews@hayhoehomes.com

SITE PLAN

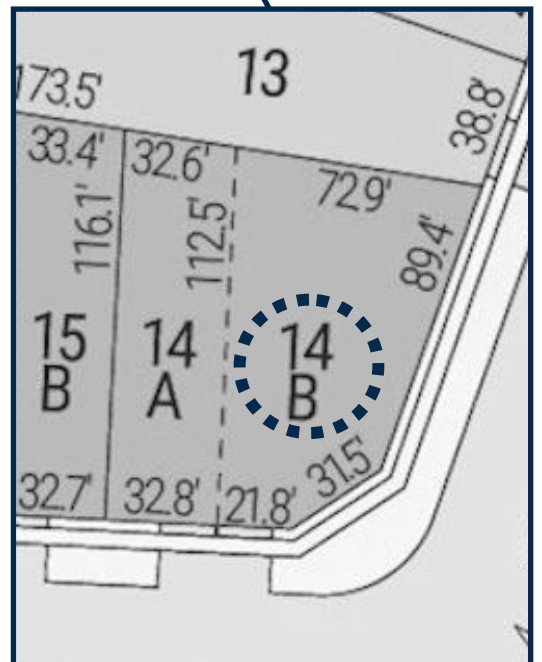


27 DUNNING WAY

EXTERIOR FEATURES:

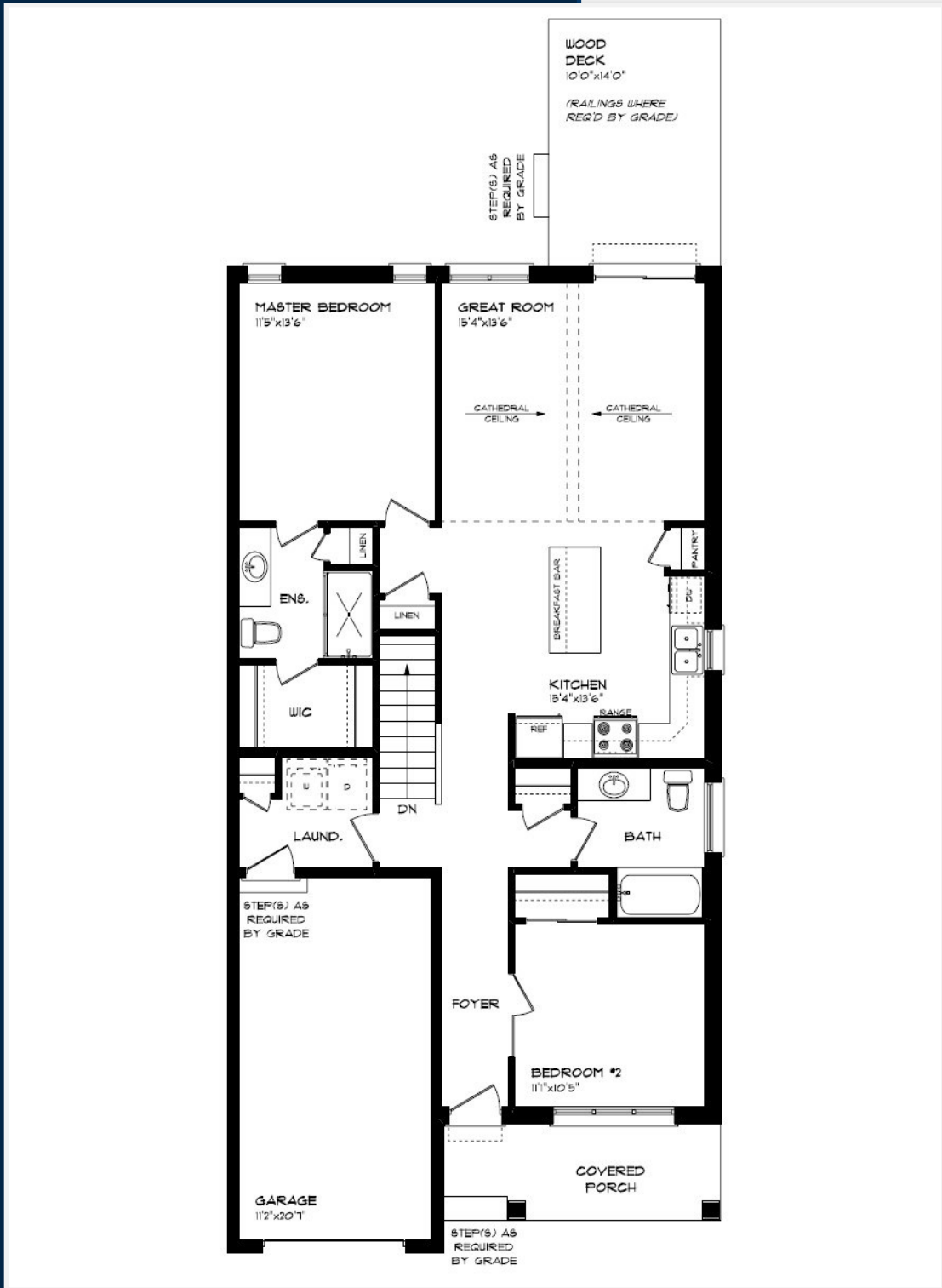
- KEYLESS ENTRY
- TREATED WOOD DECK
- ASPHALT DRIVEWAY
- WALKING TRAILS

HAYHOE™
HOMES



MAIN FLOOR

27 DUNNING WAY, ST. THOMAS



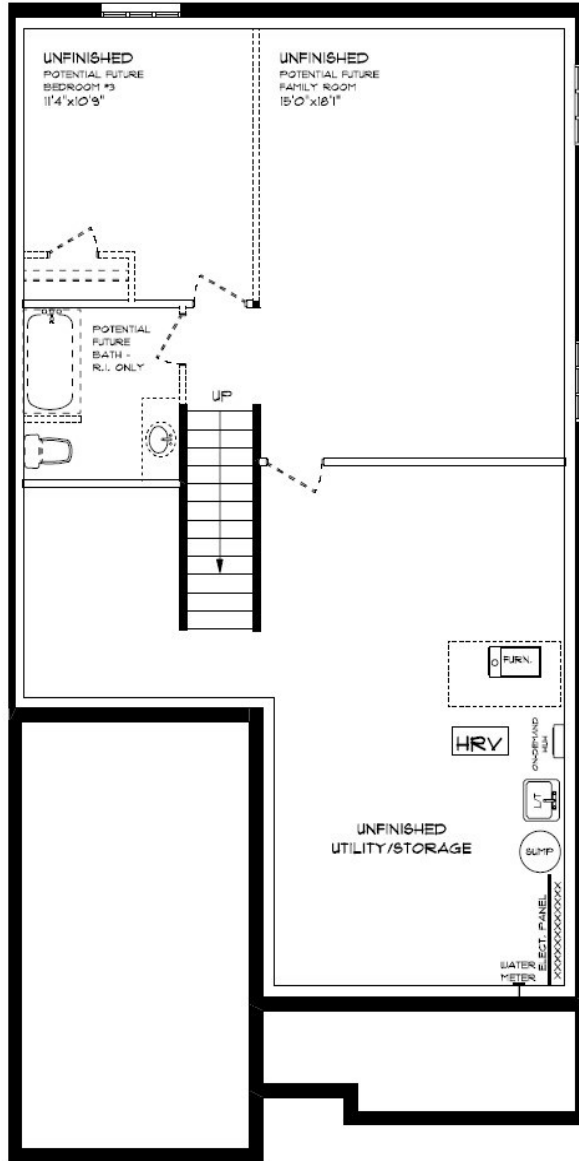
MAIN FLOOR:
APPROX 1225 SQFT

- SINGLE CAR GARAGE
- KITCHEN ISLAND
- VINYL PLANK FLOORING
- QUARTZ COUNTERTOPS

HAYHOETM
— HOMES —

BASEMENT

27 DUNNING WAY, ST. THOMAS



BASEMENT:
UNFINISHED

AIR CONDITIONING
GAS FURNACE WITH HRV
HUMIDIFIER
NEW HOME WARRANTY

HAYHOE™
— HOMES —

INTERIOR FINISHES

27 DUNNING



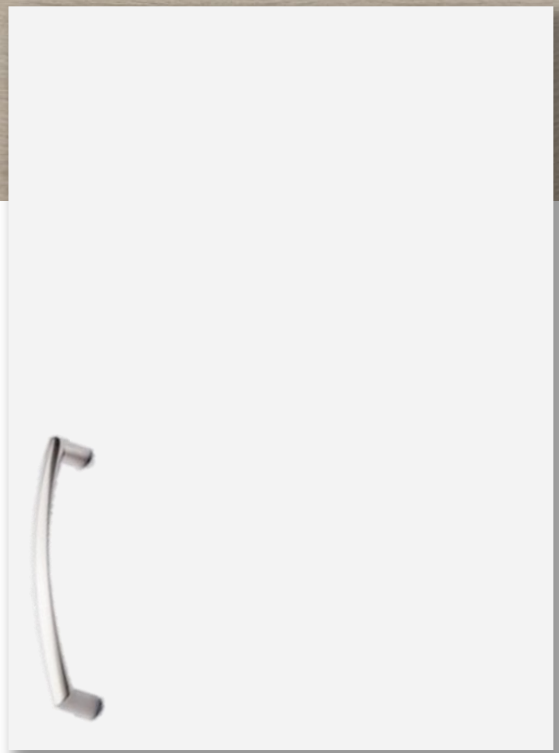
KITCHEN COUNTERTOPS



LUXURY VINYL PLANK



PAINT
COLOUR



KITCHEN
CABINETS

ISLAND PENDANTS



FOYER
FIXTURE



INTERIOR FINISHES

27 DUNNING

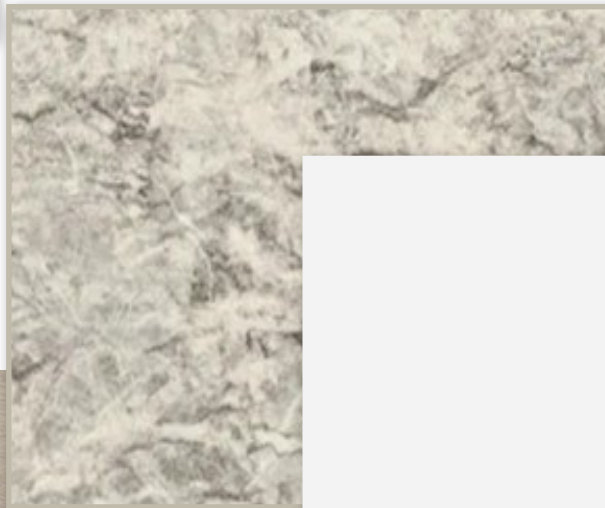
INTERIOR DOOR STYLE



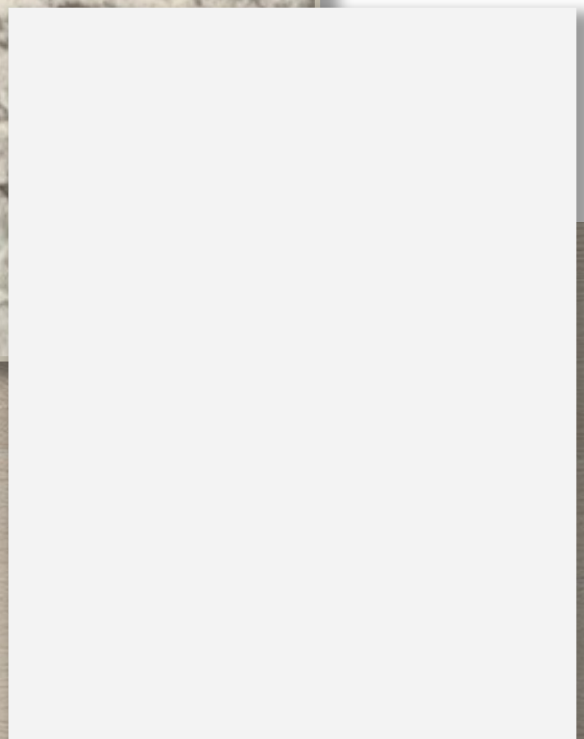
CARPET



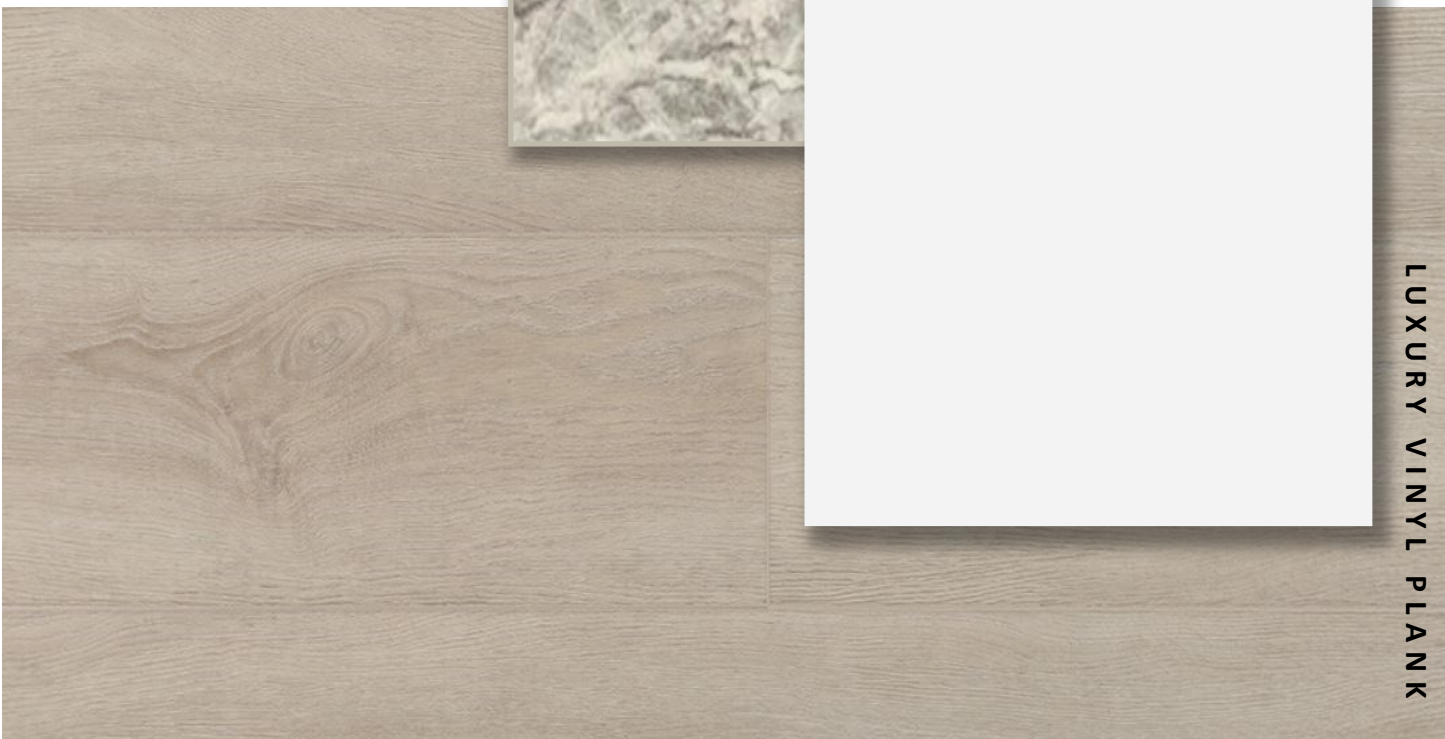
BATHROOM
COUNTERTOP



BATHROOM
CABINETS



LUXURY VINYL PLANK



PRICE, PRODUCTS, COLOURS & FEATURES ARE SUBJECT TO CHANGE WITHOUT NOTICE.
COLOURS SHOWN MAY VARY FROM INSTALLED MATERIALS. E & O.E

CREATED AUG 30, 2024