

SEMI-DETACHED

PREMIUM FEATURES



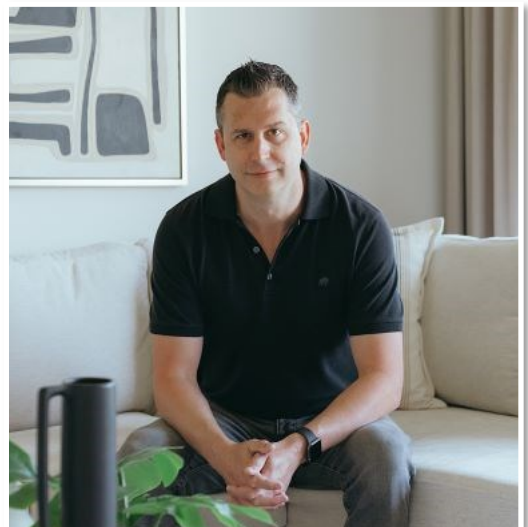
33 DUNNING WAY

ORCHARD PARK MEADOWS, ST. THOMAS

THE DETAILS

PRICE	\$ 625,000
CLOSING DATE	MAY 27, 2025
LOT NUMBER	15A
BEDROOMS	3
BATHS	3
SQFT	1784
GARAGE	1
MODEL	SEMI-DETACHED

HAYHOE™
— HOMES —



SALES PROFESSIONAL

DAVE MATTHEWS

519.633.9215

dave.matthews@hayhoehomes.com

SITE PLAN

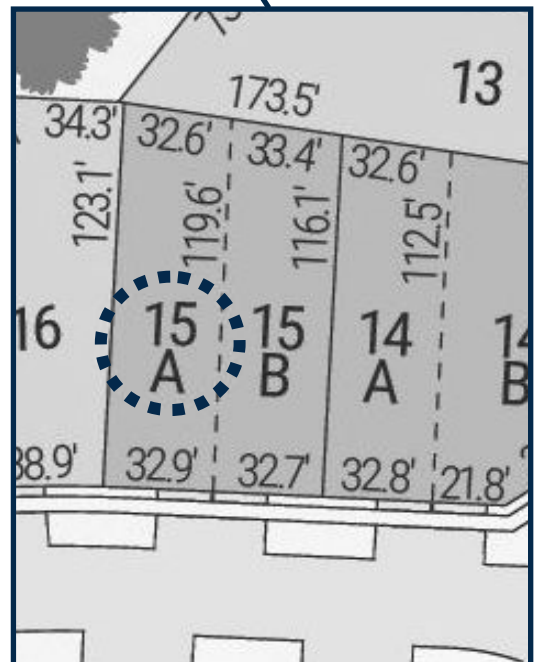


33 DUNNING WAY

EXTERIOR FEATURES:

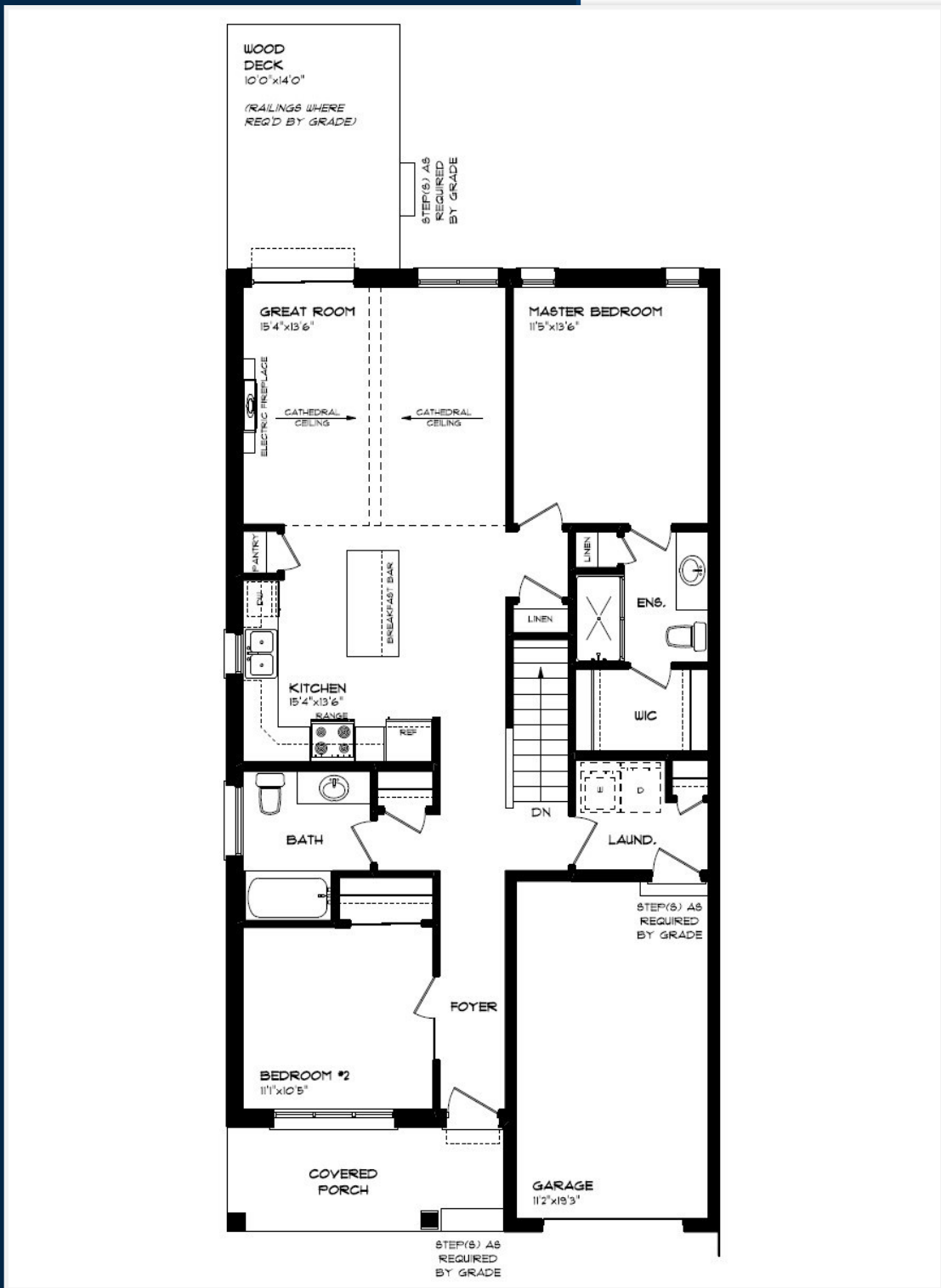
- KEYLESS ENTRY
- TREATED WOOD DECK
- BBQ GAS LINE
- ASPHALT DRIVEWAY
- WALKING TRAILS

HAYHOE™
HOMES



MAIN FLOOR

33 DUNNING WAY, ST. THOMAS



SINGLE CAR GARAGE

KITCHEN ISLAND

VINYL PLANK FLOORING

ELECTRIC FIREPLACE

QUARTZ COUNTERTOPS

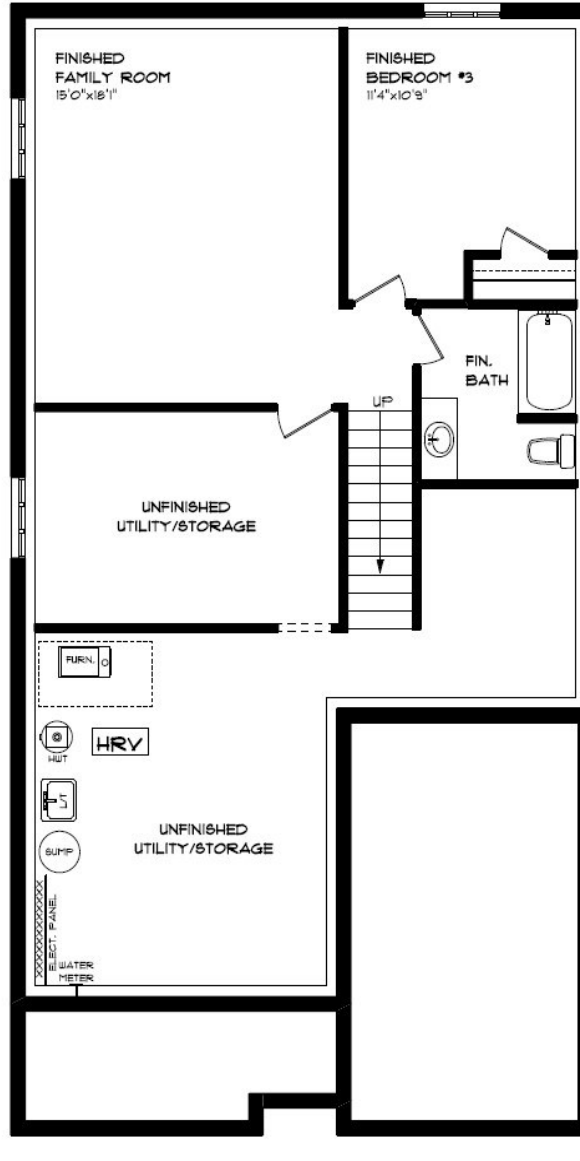
KITCHEN BACKSPLASH

HAYHOETM
— HOMES —

MAIN FLOOR:
 APPROX 1225 SQFT

BASEMENT

33 DUNNING WAY, ST. THOMAS



- AIR CONDITIONING
- GAS FURNACE WITH HRV
- HUMIDIFIER
- NEW HOME WARRANTY
- CARPET FLOORING
- VINYL PLANK FLOORING

BASEMENT:
APROX 559 SQFT

HAYHOE™
— HOMES —

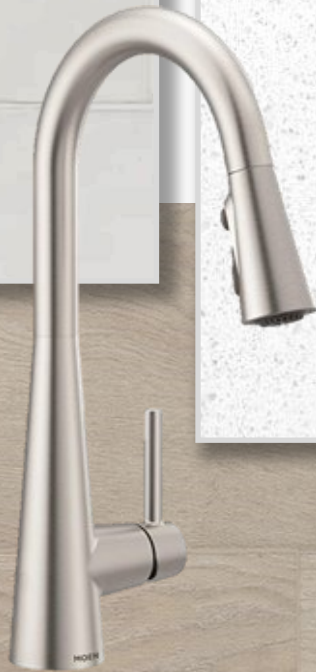
INTERIOR FINISHES

33 DUNNING

KITCHEN BACKSPLASH



KITCHEN COUNTERTOPS



LUXURY VINYL PLANK



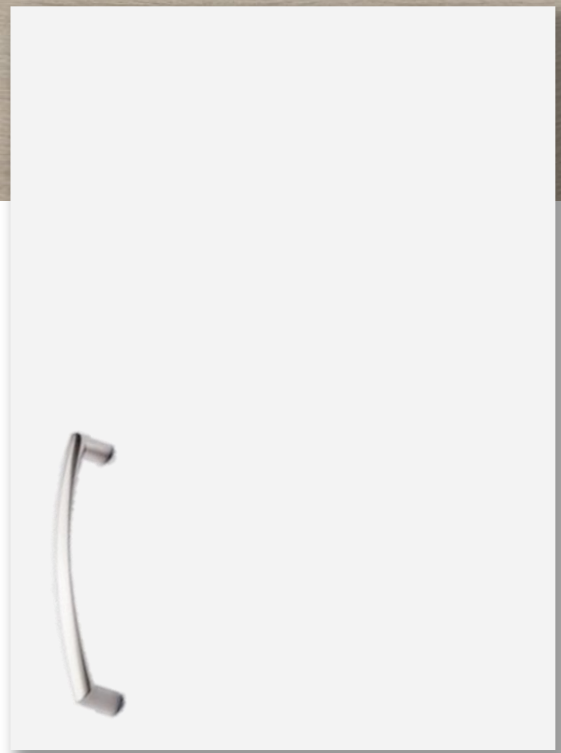
PAINT
COLOUR



ISLAND PENDANTS



FOYER
FIXTURE



KITCHEN
CABINETS

HAYHOE™
HOMES

PRICE, PRODUCTS, COLOURS & FEATURES ARE SUBJECT TO CHANGE WITHOUT NOTICE.
COLOURS SHOWN MAY VARY FROM INSTALLED MATERIALS. E & O.E

CREATED AUG 30, 2024

INTERIOR FINISHES

33 DUNNING

INTERIOR DOOR STYLE

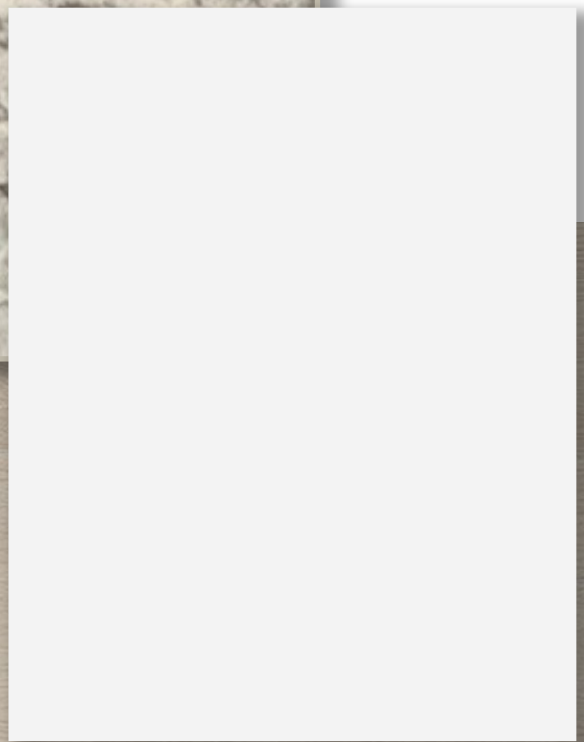
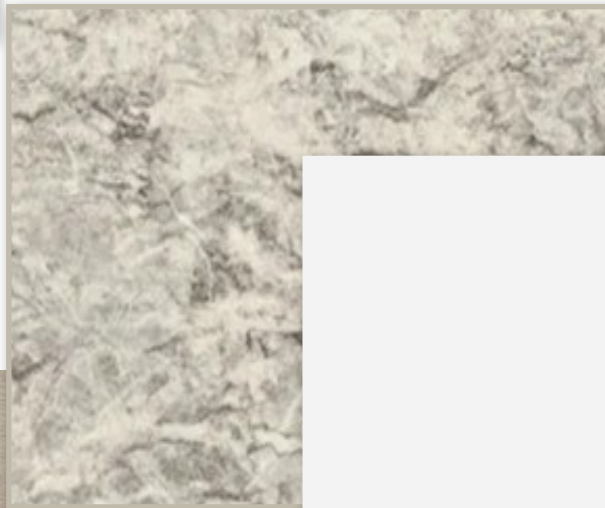


CARPET



BATHROOM
COUNTERTOP

BATHROOM
CABINETS



LUXURY VINYL PLANK

HAYHOE™
— HOMES —