

INVENTORY HOME



23 BERARDI CRES.

MOUNT ELGIN MEADOW LANDS

THE DETAILS

PRICE	\$ 789,000
CLOSING DATE	APRIL 30, 2024
LOT NUMBER	16
BEDROOMS	4
BATHS	2.5
SQFT	2254
GARAGE	2
MODEL	WELLSHIRE

HAYHOE™
—HOMES—



SALES PROFESSIONAL

JANELL HEYERMAN

519.842.2435

janell.heyerman@hayhoehomes.com

SITE PLAN

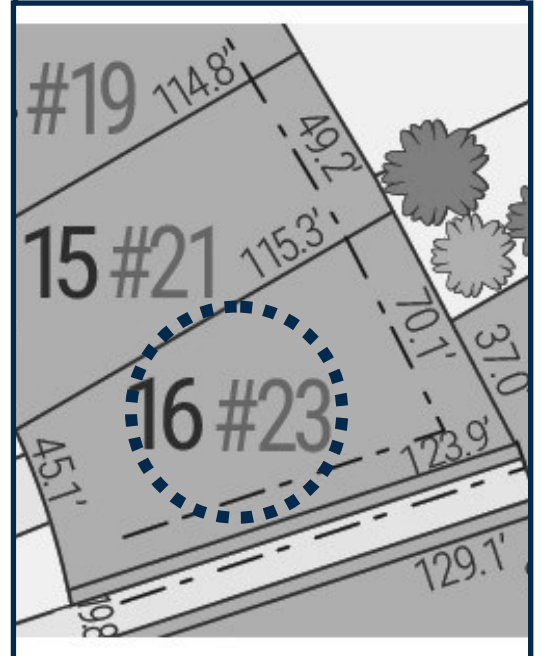


23 BERARDI CRES.

EXTERIOR FEATURES:

- KEYLESS ENTRY
- TREATED WOOD DECK
- BBQ GAS LINE
- ASPHALT DRIVEWAY
- WALKING TRAILS

HAYHOE™
HOMES

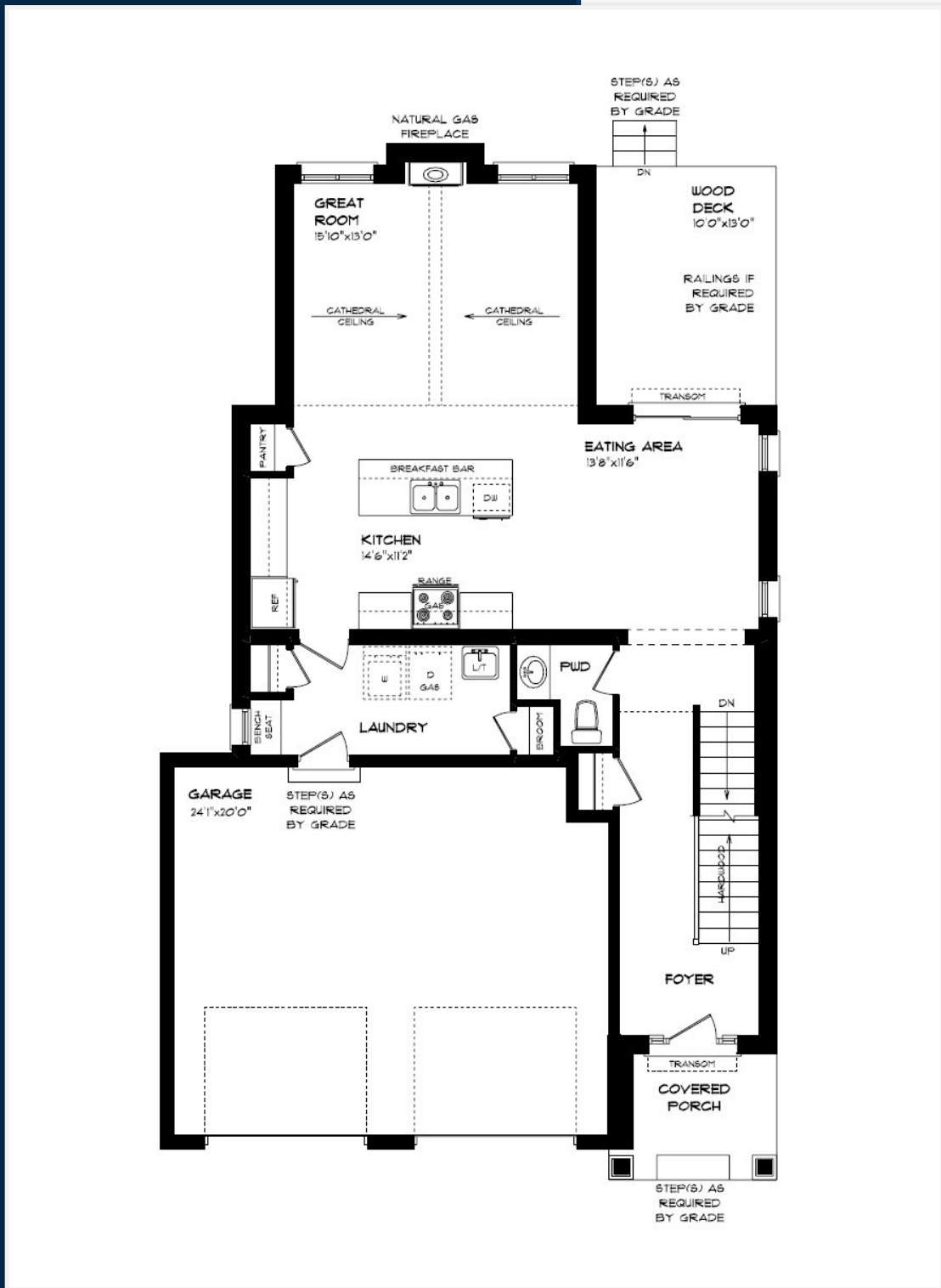


MOUNT ELGIN

MEADOW
LANDS

MAIN FLOOR

23 BERARDI CRES., MOUNT ELGIN



CUSTOM CABINETS & HOOD

GAS FIREPLACE

HARDWOOD FLOORING

HARDWOOD STAIRS

CERAMIC TILE FLOORING

QUARTZ COUNTERTOPS

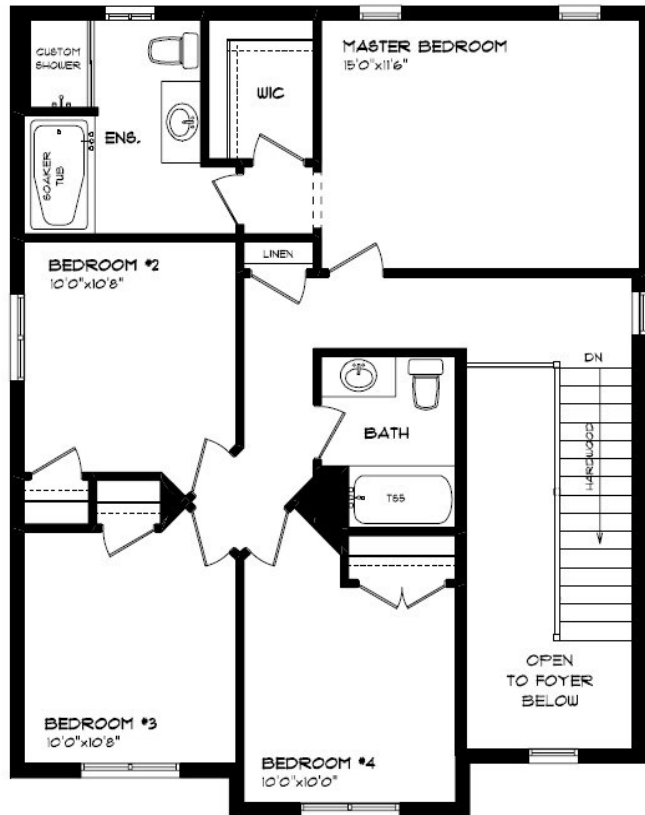
KITCHEN BACKSPLASH

MAIN FLOOR:
APPROX 963 SQFT

HAYHOETM
— HOMES —

SECOND FLOOR

23 BERARDI CRES., MOUNT ELGIN



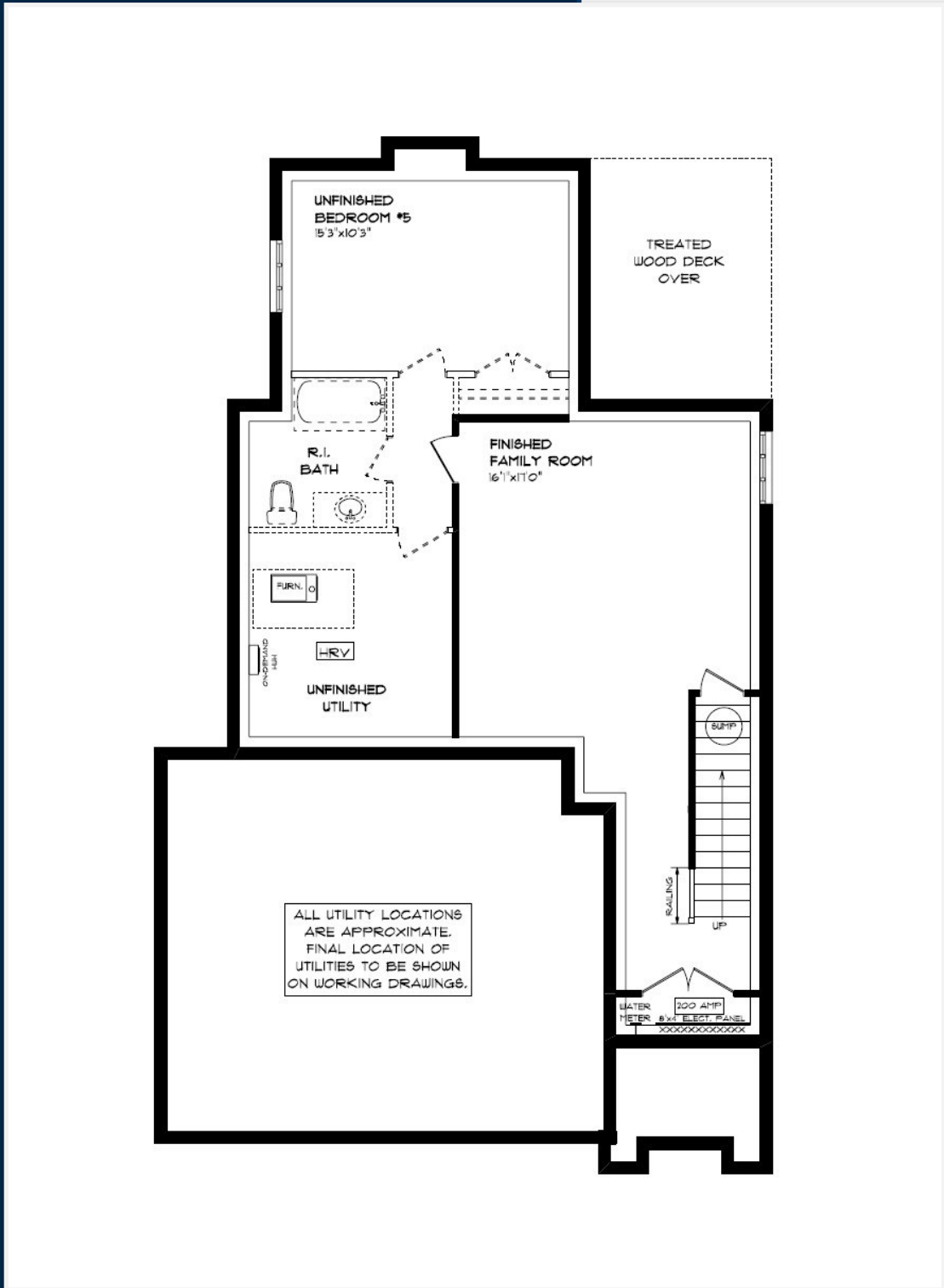
HARDWOOD STAIRS
CUSTOM TILED SHOWER
SOAKER TUB
WALK-IN CLOSET
CARPET FLOORING
DECORATIVE LIGHTING

SECOND FLOOR:
APPROX 915 SQFT

HAYHOE™
— HOMES —

BASEMENT

23 BERARDI CRES., MOUNT ELGIN



- CARPET FLOORING
- AIR CONDITIONING
- GAS FURNACE WITH HRV
- HUMIDIFIER
- NEW HOME WARRANTY

BASEMENT:
APPROX 376 SQFT



EXTERIOR FINISHES

SHINGLES



23 Berardi Cres..

SIDING



SIDING



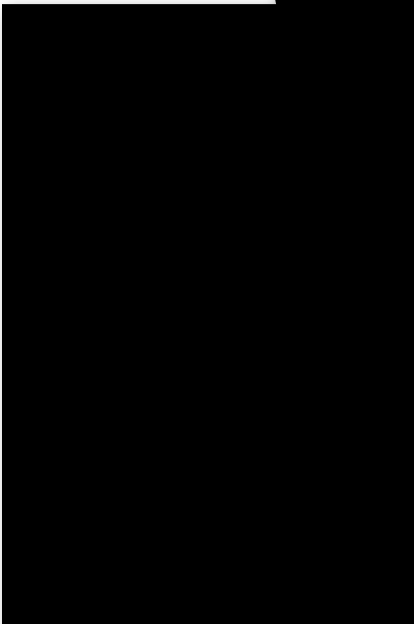
BRICK

FRONT DOOR

WINDOWS

ALUMINUM

GARAGE DOOR



ALUMINUM

INTERIOR FINISHES

KITCHEN BACKSPLASH



23 Berardi Cres..



KITCHEN COUNTERTOPS

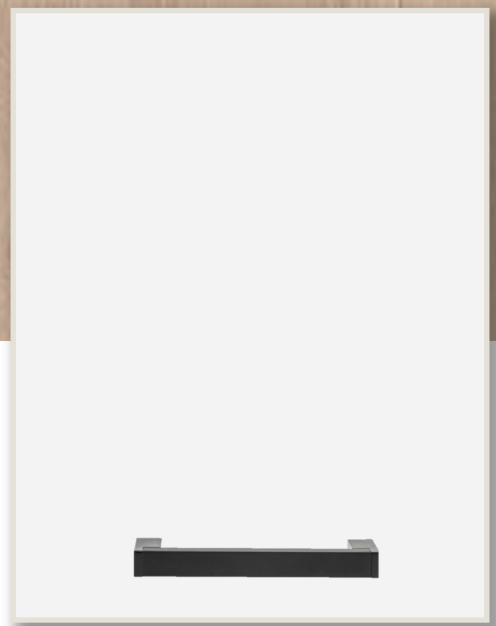


PAINT
COLOUR



MAIN FLOOR TILE

HARDWOOD



KITCHEN
CABINTRY

HAYHOE™
—•HOMES•—

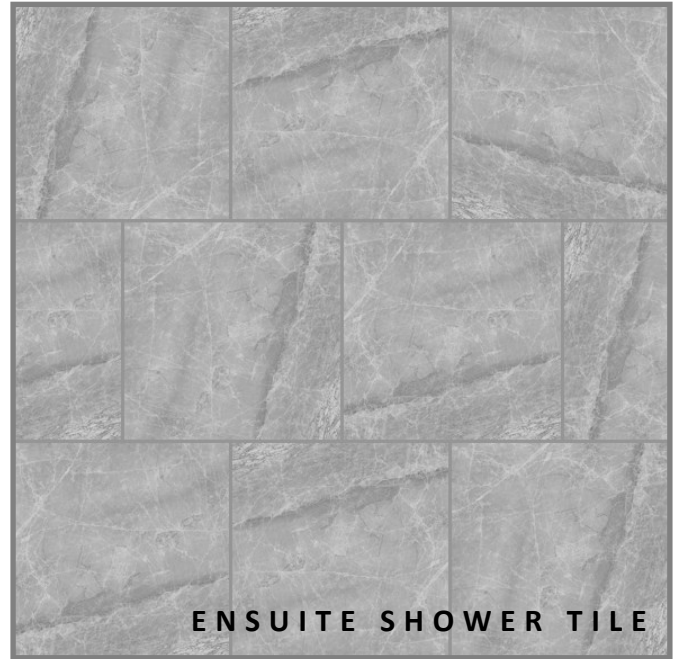
INTERIOR FINISHES

23 Berardi Cres..

INTERIOR DOOR STYLE



CARPET



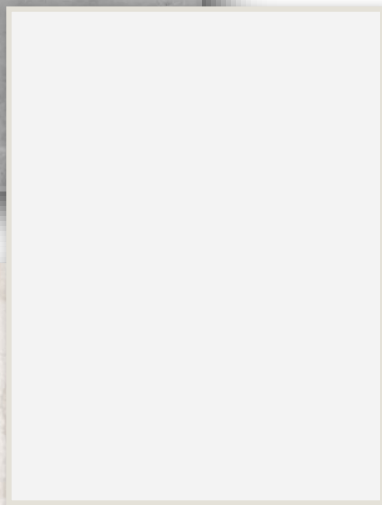
ENSUITE SHOWER TILE



MAIN BATH
COUNTERTOP



ENSUITE
COUNTERTOPS



ENSUITE
CABINETS



MAIN BATH
FLOOR TILE

MAIN BATH
CABINETS



ENSUITE
FLOOR TILE

HAYHOE™
— HOMES —