

INVENTORY HOME

BASEMENT SUITE



39 DUNNING WAY

ORCHARD PARK MEADOWS, ST. THOMAS

THE DETAILS

PRICE	\$ 869,000
CLOSING DATE	NOVEMBER 1, 2024
LOT NUMBER	18
BEDROOMS	5
BATHS	3.5
SQFT	2841
GARAGE	2
MODEL	WALLINGFORD

HAYHOE™
— HOMES —



SALES PROFESSIONAL

DAVE MATTHEWS

519.633.9215

dave.matthews@hayhoehomes.com

SITE PLAN

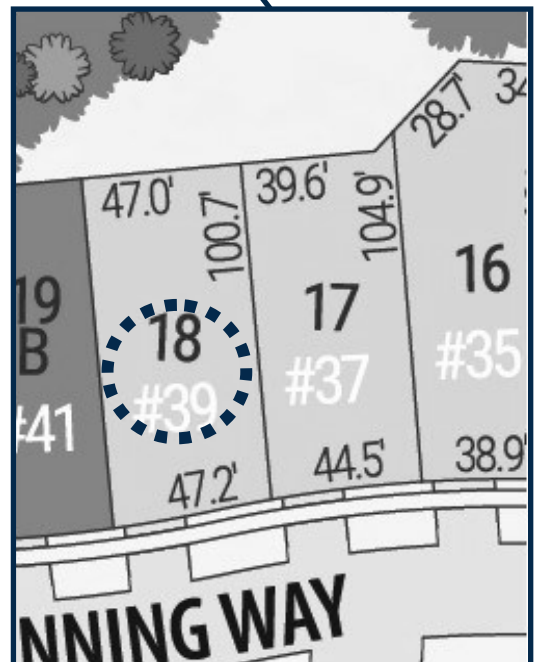


39 DUNNING

EXTERIOR FEATURES:

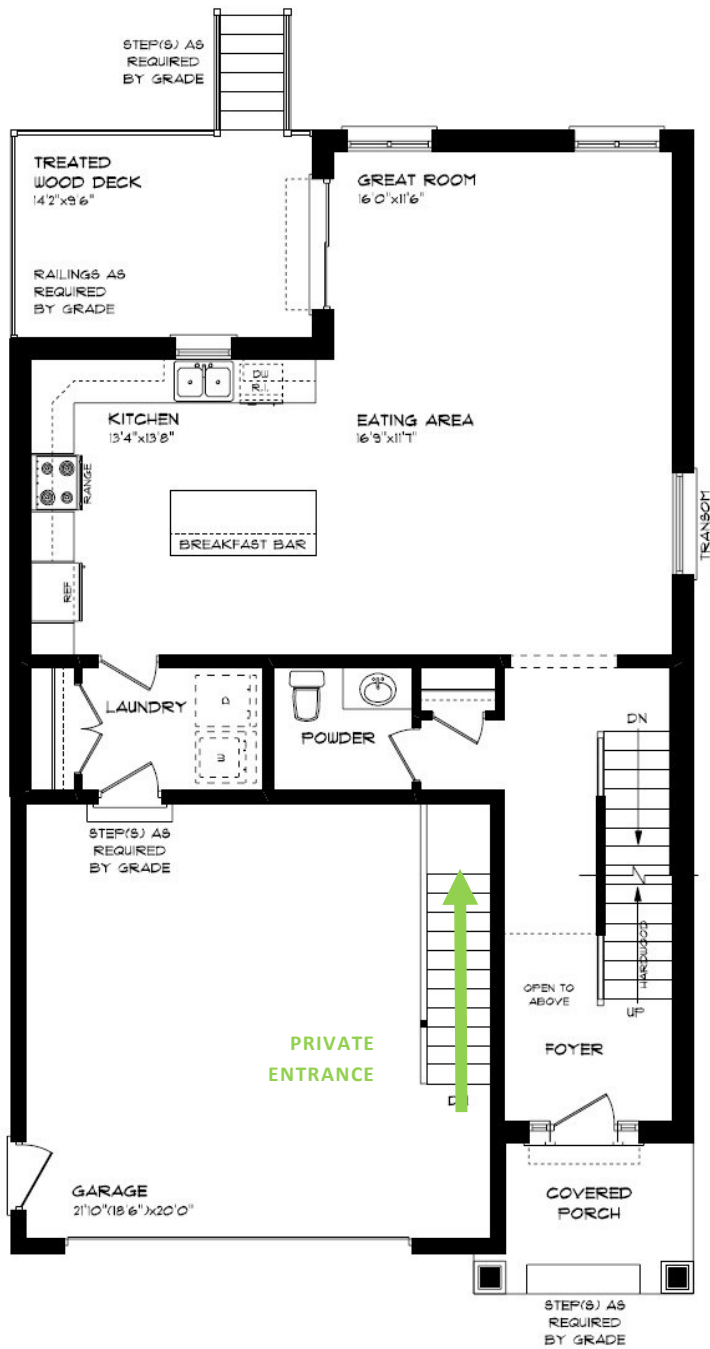
- KEYLESS ENTRY
- TREATED WOOD DECK
- BBQ GAS LINE
- ASPHALT DRIVEWAY
- WALKING TRAILS

HAYHOE™
HOMES



MAIN FLOOR

39 DUNNING WAY, ST. THOMAS



BASEMENT SUITE

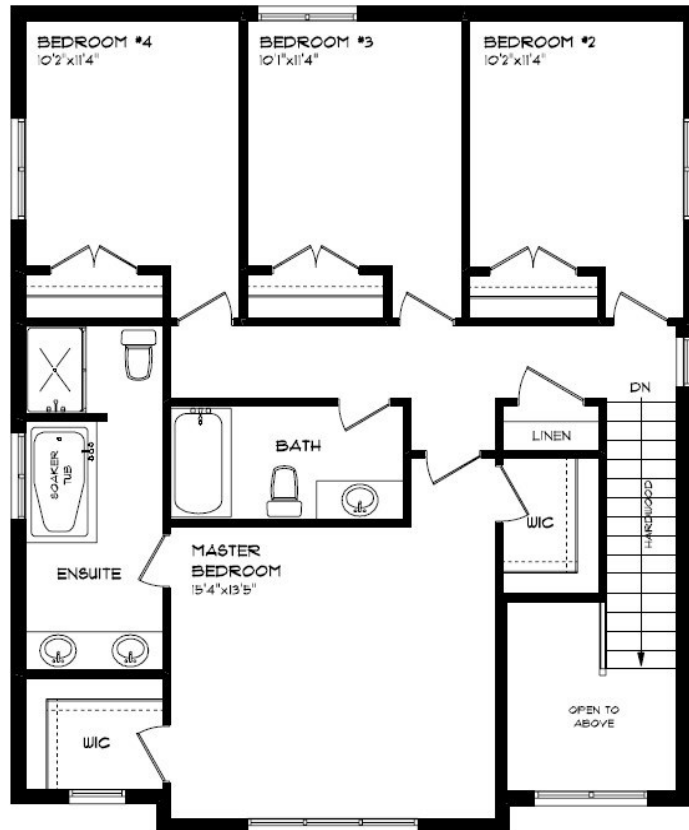
- DOUBLE CAR GARAGE
- KITCHEN ISLAND
- HARDWOOD FLOORING
- QUARTZ COUNTERTOPS
- KITCHEN BACKSPLASH

MAIN FLOOR:
APPROX 1000 SQFT

HAYHOETM
— HOMES —

SECOND FLOOR

39 DUNNING WAY, ST. THOMAS



THIS HOUSE IS EQUIPPED WITH A SECONDARY FAMILY DUELLING IN THE BASEMENT. THE CITY OF ST. THOMAS REQUIRES THE PURCHASER TO SIGN A WAIVER INDICATING THAT THE PURCHASER WILL ONLY ALLOW A FAMILY MEMBER TO DUELL IN THIS SPACE AND NOT A THIRD PARTY TENANT. THE PURCHASER TO DIRECT ALL THEIR QUESTIONS ABOUT THIS TOPIC TO THEIR LAWYER.

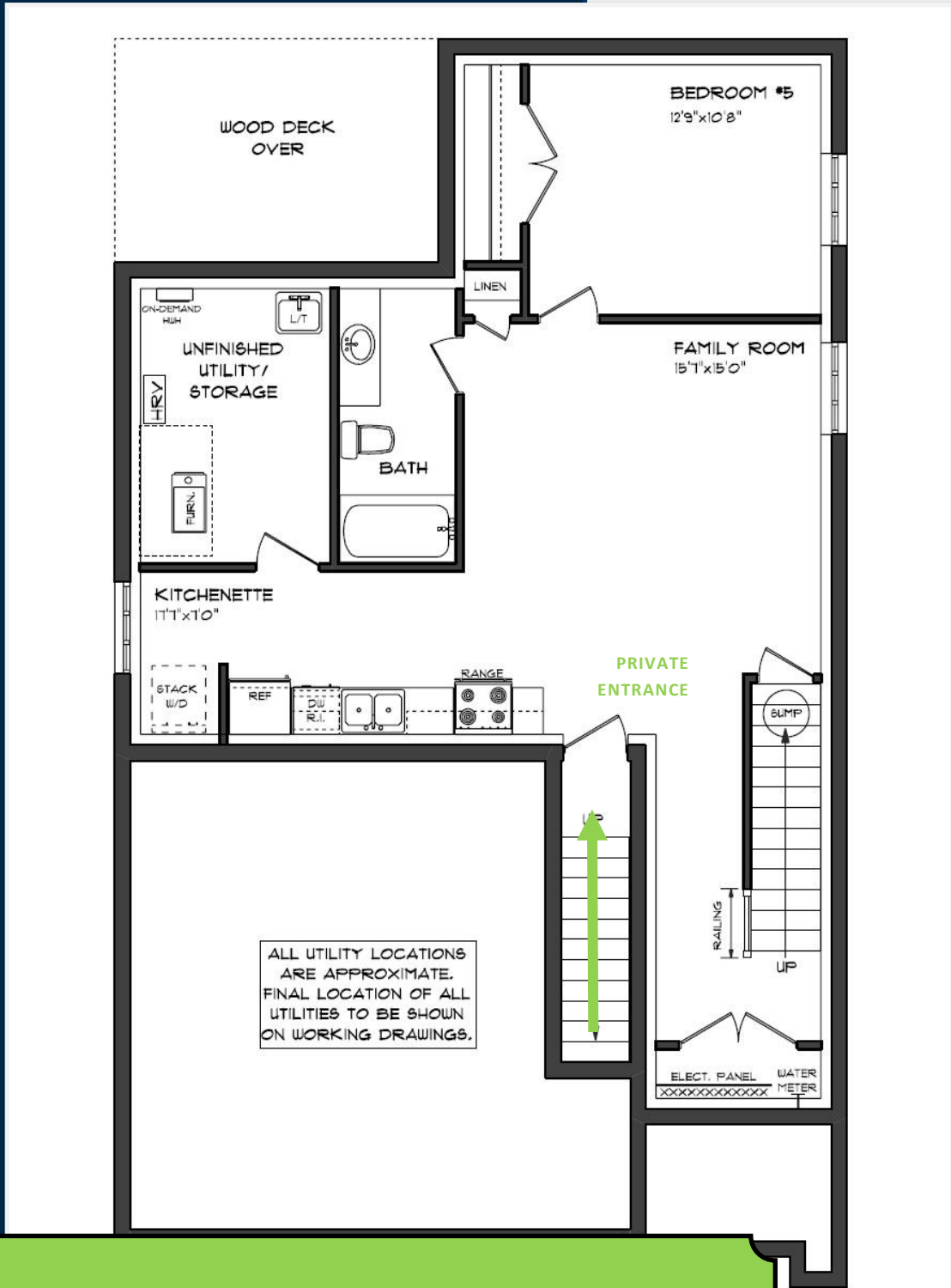
PROFESSIONALLY DESIGNED
CARPET FLOORING
SOAKER TUB
WALK-IN CLOSET

SECOND FLOOR:
APPROX 1113 SQFT

HAYHOE™
— HOMES —

BASEMENT

39 DUNNING WAY, ST. THOMAS



BASEMENT SUITE

SECONDARY FAMILY DWELLING
AIR CONDITIONING
GAS FURNACE WITH HRV
HUMIDIFIER
NEW HOME WARRANTY

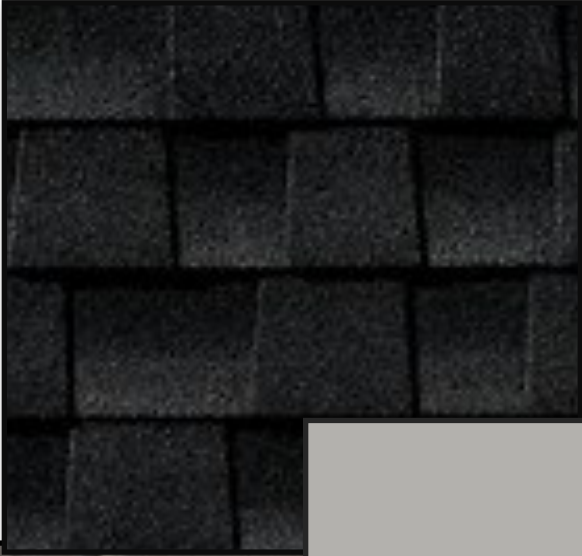
BASEMENT:
APPROX 728 SQFT

HAYHOE™
— HOMES —

EXTERIOR FINISHES

39 Dunning Way

SHINGLES



SIDING

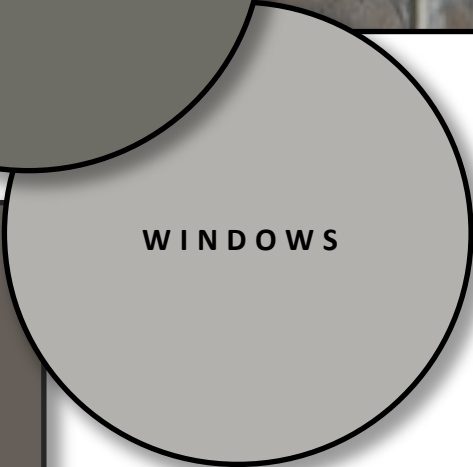
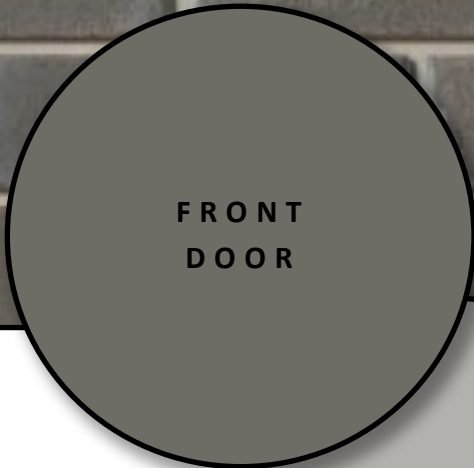


SIDING



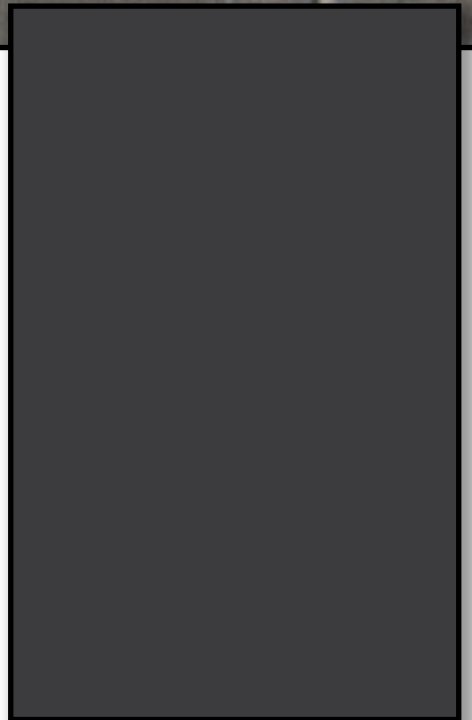
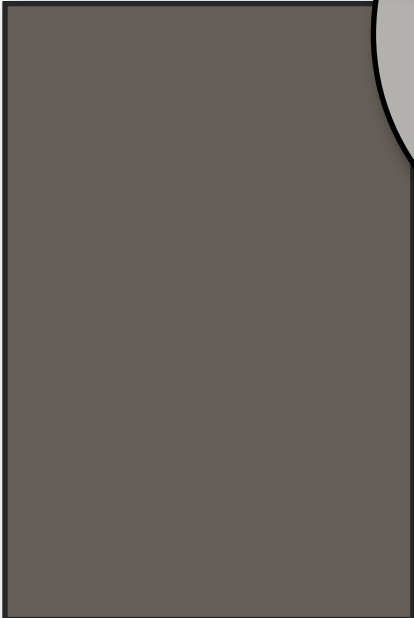
FRONT
DOOR

BRICK



WINDOWS

GARAGE DOOR



ALUMINUM



INTERIOR FINISHES

39 Dunning Way

KITCHEN BACKSPLASH



KITCHEN COUNTERTOPS



HARDWOOD

PAINT
COLOUR



MAIN FLOOR
TILE

KITCHEN
CABINETS

HAYHOE™
HOMES

PRICE, PRODUCTS, COLOURS & FEATURES ARE SUBJECT
CHANGE WITHOUT NOTICE.

TO

CREATED APRIL 23, 2024

INTERIOR FINISHES

39 Dunning Way

INTERIOR DOOR STYLE



ENSUITE
COUNTERTOPS



ENSUITE
CABINETY



ENSUITE
FLOOR TILE



CARPET



KITCHENETTE
COUNTERTOPS



KITCHENETTE
CABINETY



LVP IN
BASEMENT