

# T O W N H O M E



ESSENTIAL FEATURES

## 56 DUNNING WAY

ORCHARD PARK MEADOWS, ST. THOMAS

### THE DETAILS

PRICE	\$ 555,000
CLOSING DATE	NOVEMBER 29, 2024
LOT NUMBER	24F
BEDROOMS	2
BATHS	1.5
SQFT	1227
GARAGE	1
MODEL	1 STOREY TOWN

**HAYHOE™**  
— HOMES —



#### SALES PROFESSIONAL

DAVE MATTHEWS

519.633.9215

dave.matthews@hayhoehomes.com

# SITE PLAN

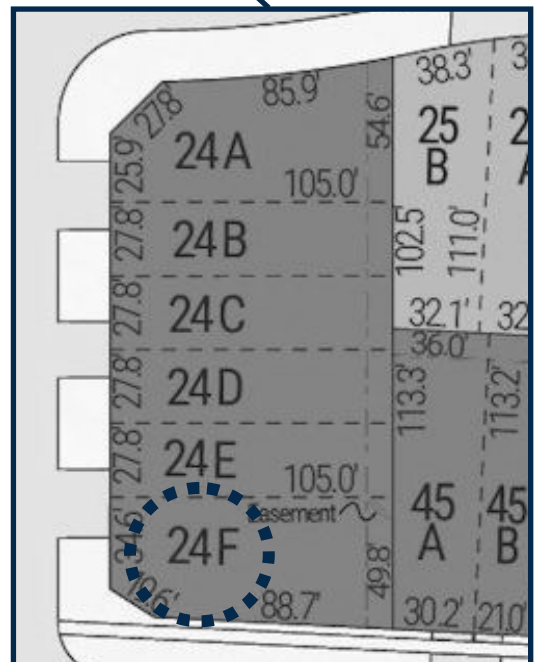


## 56 DUNNING

### EXTERIOR FEATURES:

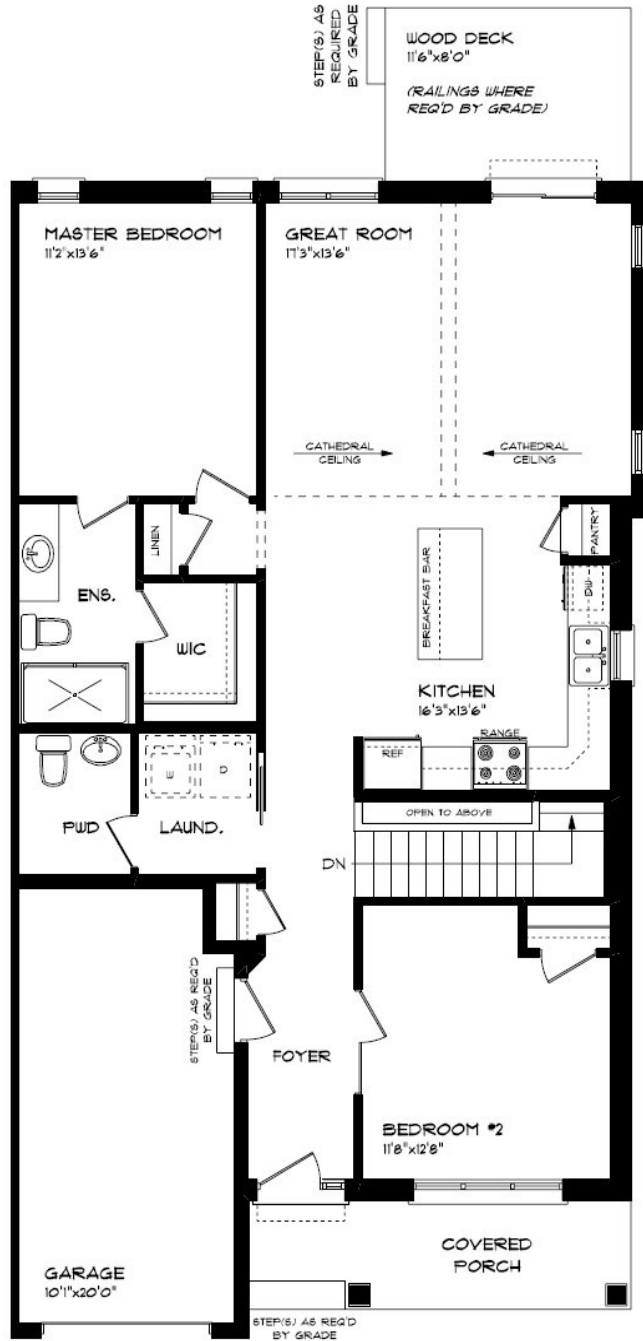
- KEYLESS ENTRY
- TREATED WOOD DECK
- ASPHALT DRIVEWAY
- WALKING TRAILS

**HAYHOE™**  
HOMES



# MAIN FLOOR

56 DUNNING WAY, ST. THOMAS



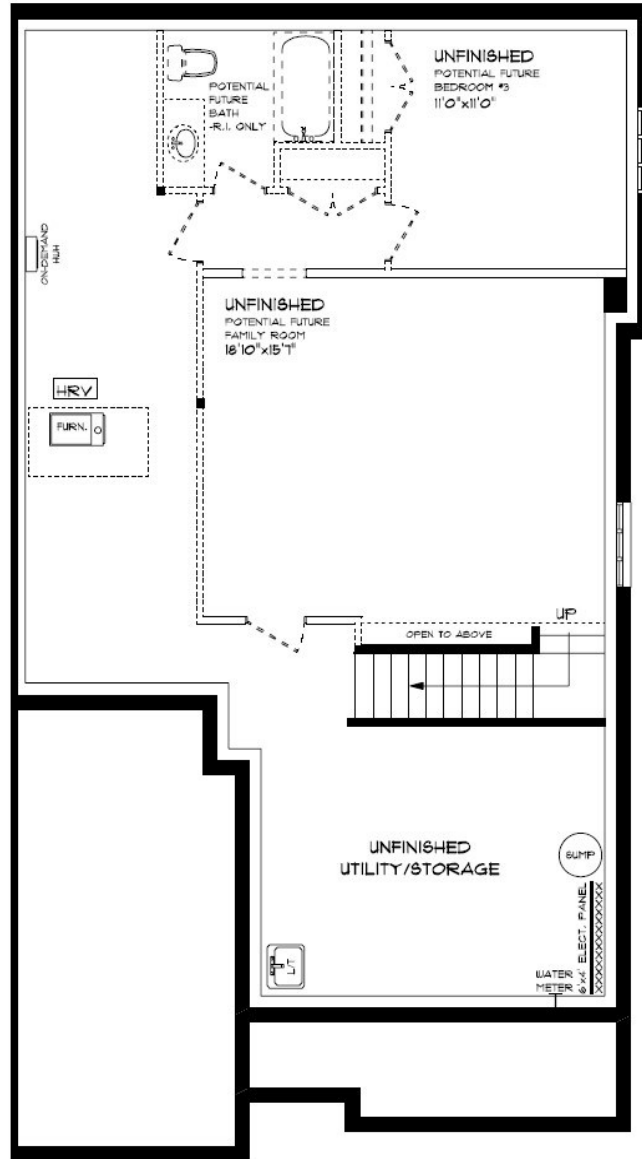
MAIN FLOOR:  
APPROX 1227 SQFT

- SINGLE CAR GARAGE
- KITCHEN ISLAND
- VINYL PLANK FLOORING
- QUARTZ COUNTERTOPS

**HAYHOE**<sup>TM</sup>  
— HOMES —

# BASEMENT

56 DUNNING WAY, ST. THOMAS



BASEMENT:  
UNFINISHED

AIR CONDITIONING  
GAS FURNACE WITH HRV  
HUMIDIFIER  
NEW HOME WARRANTY

**HAYHOE™**  
— HOMES —

# INTERIOR FINISHES

## 56 DUNNING



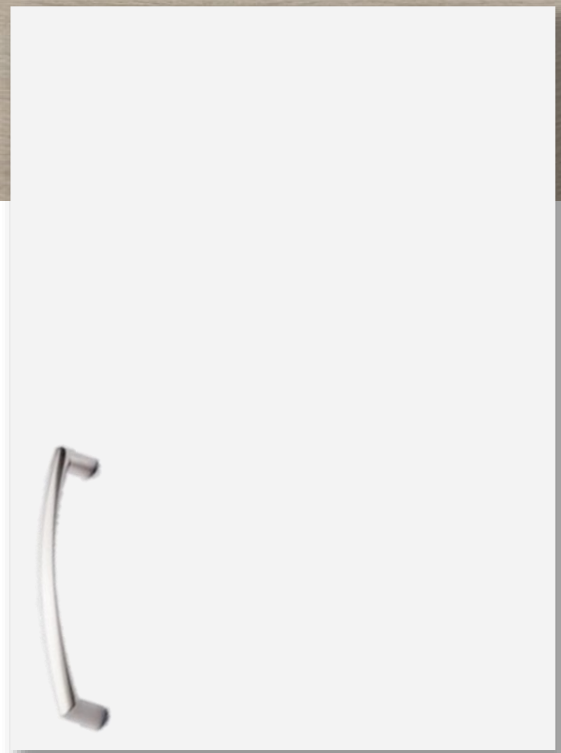
KITCHEN COUNTERTOPS



LUXURY VINYL PLANK



PAIN  
COLOUR



KITCHEN  
CABINETS

ISLAND  
PENDANTS



FOYER  
FIXTURE



# INTERIOR FINISHES

## 56 DUNNING

INTERIOR DOOR STYLE

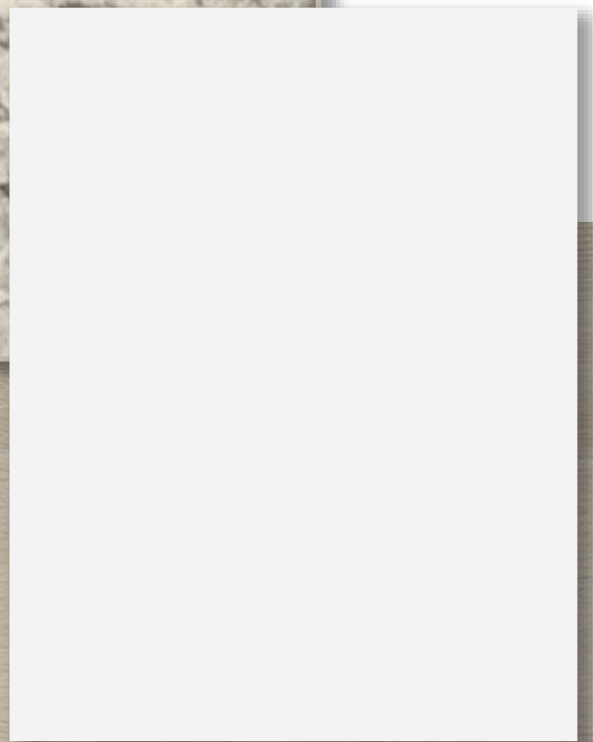
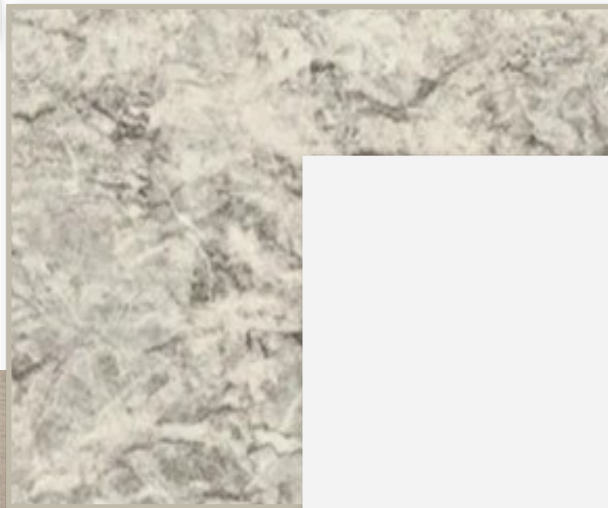


CARPET



BATHROOM  
COUNTERTOP

BATHROOM  
CABINETS



LUXURY VINYL PLANK

**HAYHOE™**  
— HOMES —