

SEMI-DETACHED



42 DUNNING WAY

ORCHARD PARK MEADOWS, ST. THOMAS

THE DETAILS

PRICE	\$ 565,000
CLOSING DATE	NOVEMBER 6, 2024
LOT NUMBER	25A
BEDROOMS	2
BATHS	2
SQFT	1225
GARAGE	1
MODEL	1 STOREY SEMI

HAYHOE™
— HOMES —



SALES PROFESSIONAL

DAVE MATTHEWS

519.633.9215

dave.matthews@hayhoehomes.com

SITE PLAN

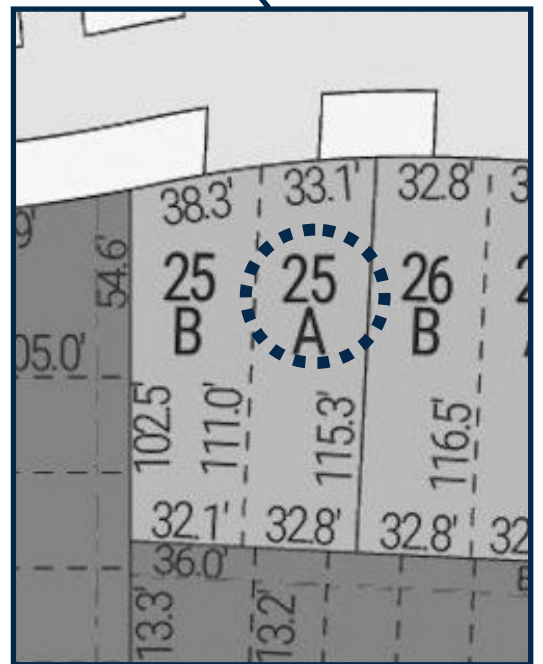


42 DUNNING

EXTERIOR FEATURES:

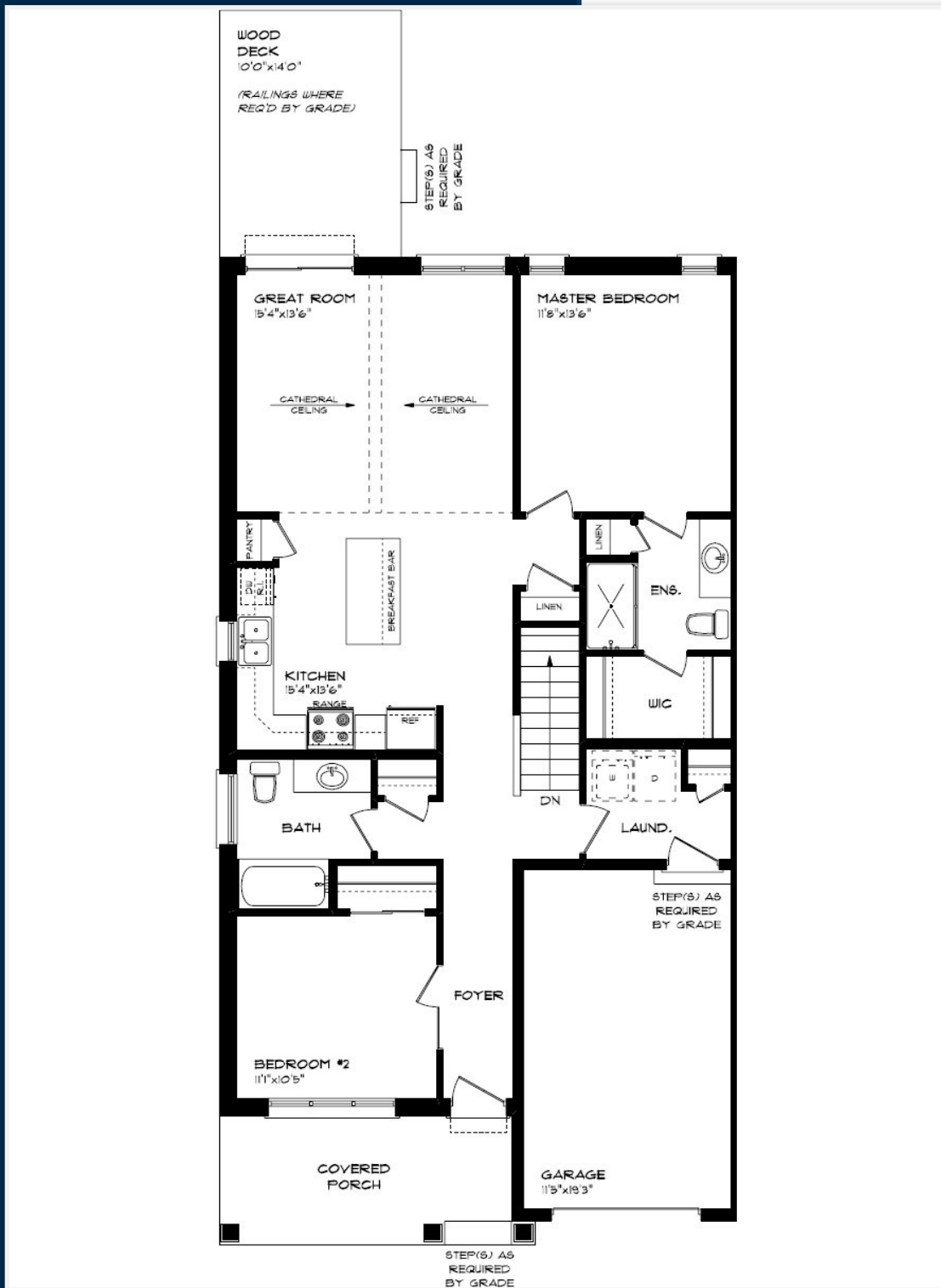
- KEYLESS ENTRY
- TREATED WOOD DECK
- ASPHALT DRIVEWAY
- WALKING TRAILS

HAYHOE™
HOMES



MAIN FLOOR

42 DUNNING WAY, ST. THOMAS



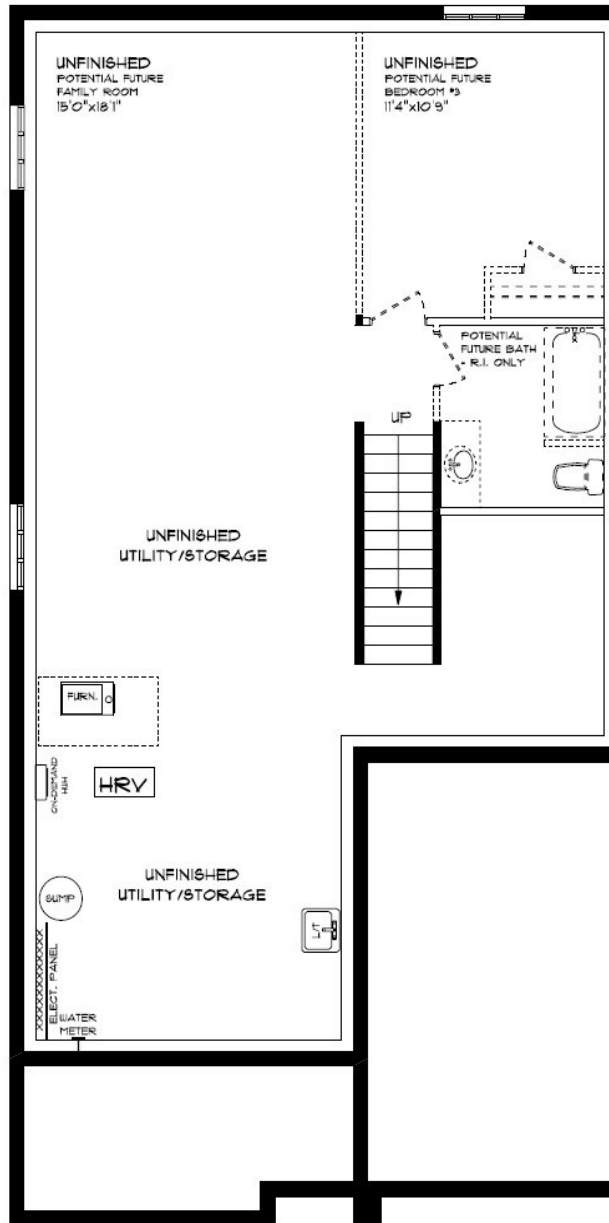
MAIN FLOOR:
APPROX 1225 SQFT

- SINGLE CAR GARAGE
- KITCHEN ISLAND
- VINYL PLANK FLOORING
- QUARTZ COUNTERTOPS



BASEMENT

42 DUNNING WAY, ST. THOMAS



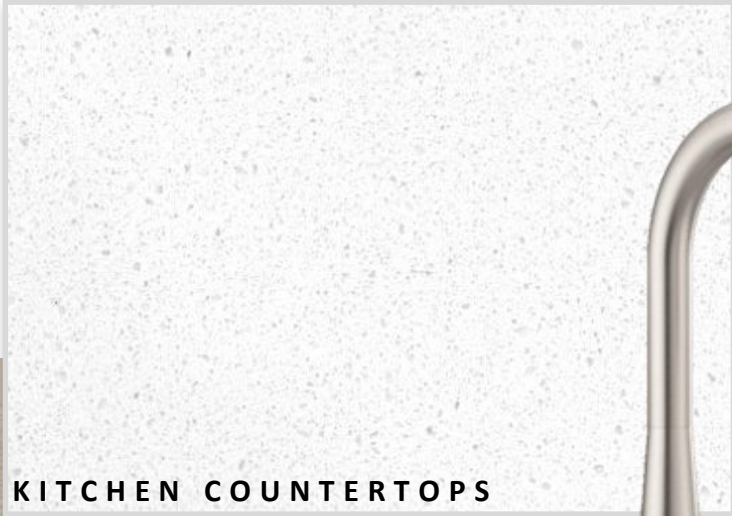
BASEMENT:
UNFINISHED

AIR CONDITIONING
GAS FURNACE WITH HRV
HUMIDIFIER
NEW HOME WARRANTY

HAYHOE™
— HOMES —

INTERIOR FINISHES

42 DUNNING



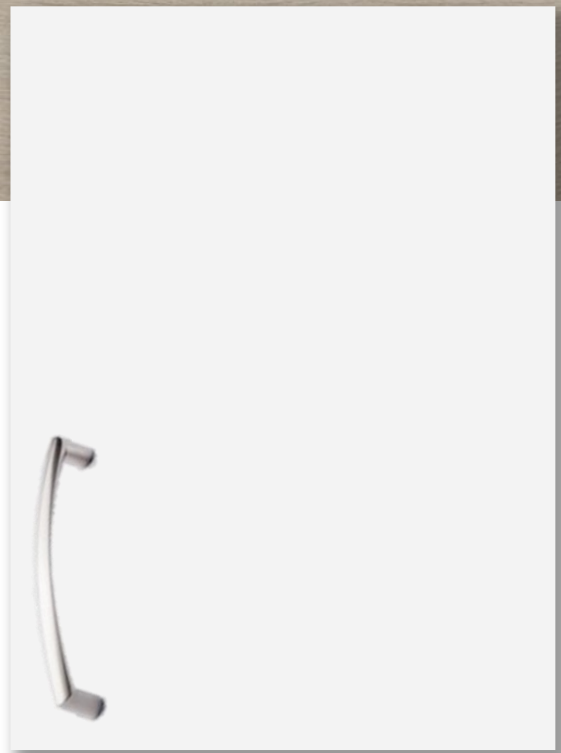
KITCHEN COUNTERTOPS



LUXURY VINYL PLANK



PAINT
COLOUR



KITCHEN
CABINETS

ISLAND PENDANTS



FOYER
FIXTURE



HAYHOE™
HOMES

INTERIOR FINISHES

42 DUNNING

INTERIOR DOOR STYLE

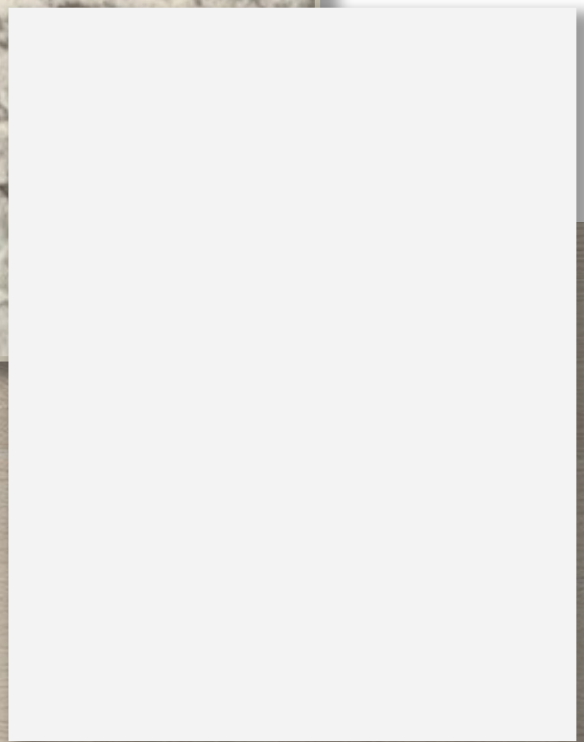
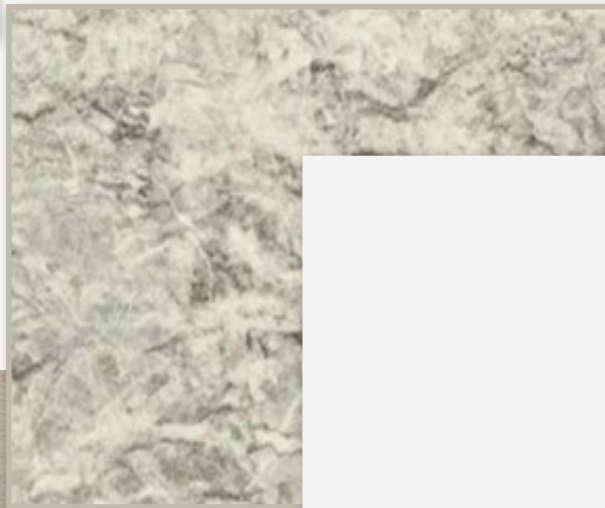


CARPET



BATHROOM
COUNTERTOP

BATHROOM
CABINERY



LUXURY VINYL PLANK

