

# SEMI-DETACHED



ESSENTIAL FEATURES

## 44 DUNNING WAY

ORCHARD PARK MEADOWS, ST. THOMAS

### THE DETAILS

PRICE	\$ 565,000
CLOSING DATE	NOVEMBER 7, 2024
LOT NUMBER	25B
BEDROOMS	2
BATHS	2
SQFT	1225
GARAGE	1
MODEL	1 STOREY SEMI

**HAYHOE™**  
— HOMES —



#### SALES PROFESSIONAL

DAVE MATTHEWS

519.633.9215

dave.matthews@hayhoehomes.com

# SITE PLAN

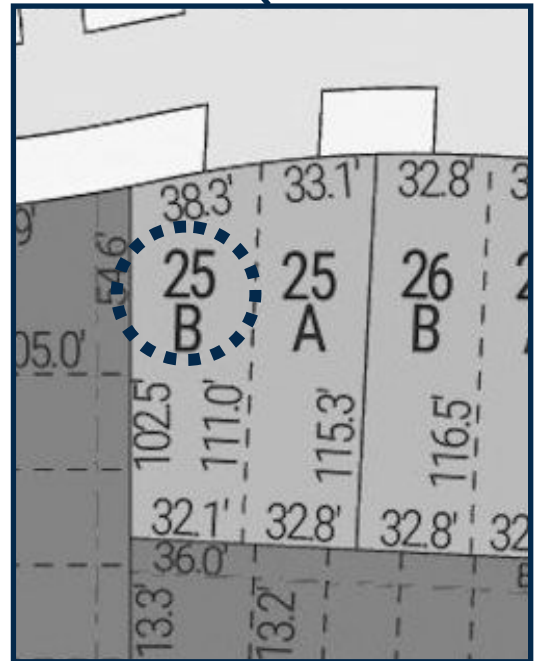


## 44 DUNNING

### EXTERIOR FEATURES:

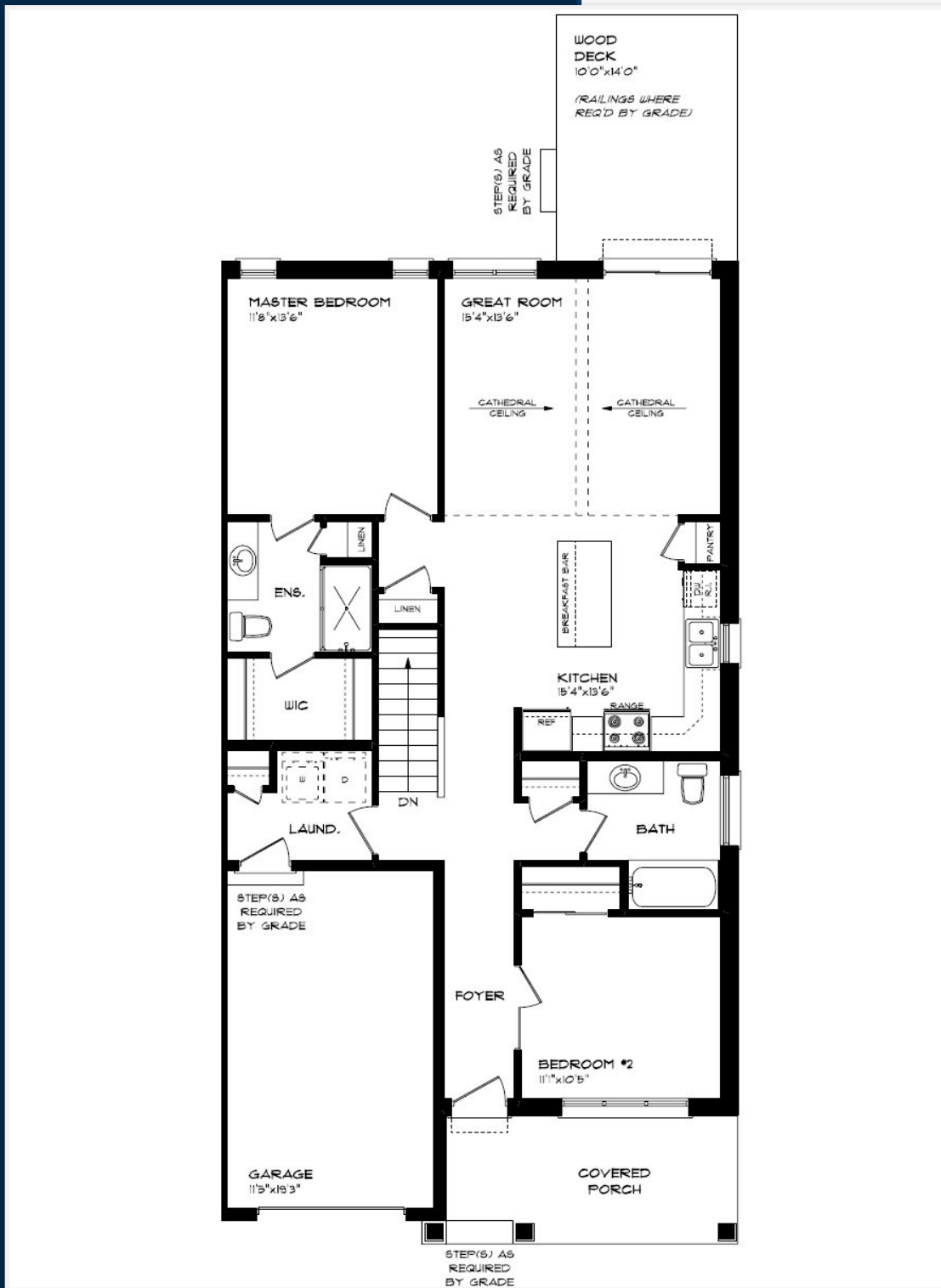
- KEYLESS ENTRY
- TREATED WOOD DECK
- ASPHALT DRIVEWAY
- WALKING TRAILS

**HAYHOE™**  
HOMES



# MAIN FLOOR

44 DUNNING WAY, ST. THOMAS



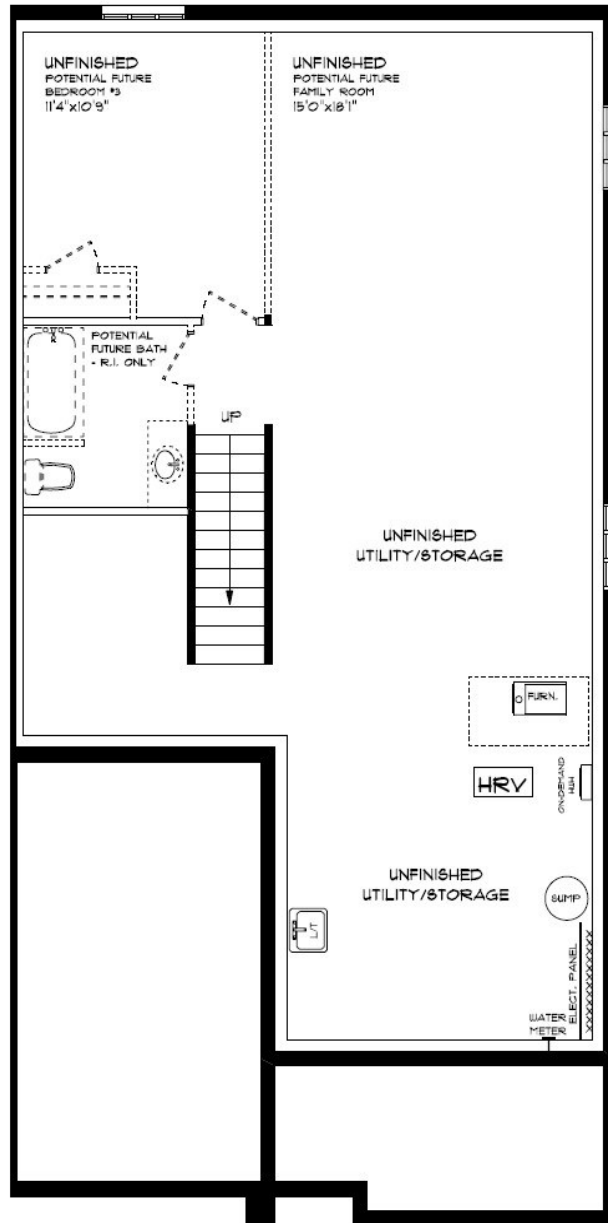
MAIN FLOOR:  
APPROX 1225 SQFT

- SINGLE CAR GARAGE
- KITCHEN ISLAND
- VINYL PLANK FLOORING
- QUARTZ COUNTERTOPS



# BASEMENT

44 DUNNING WAY, ST. THOMAS



BASEMENT:  
UNFINISHED

- AIR CONDITIONING
- GAS FURNACE WITH HRV
- HUMIDIFIER
- NEW HOME WARRANTY

**HAYHOE™**  
— HOMES —

# INTERIOR FINISHES

## 44 DUNNING



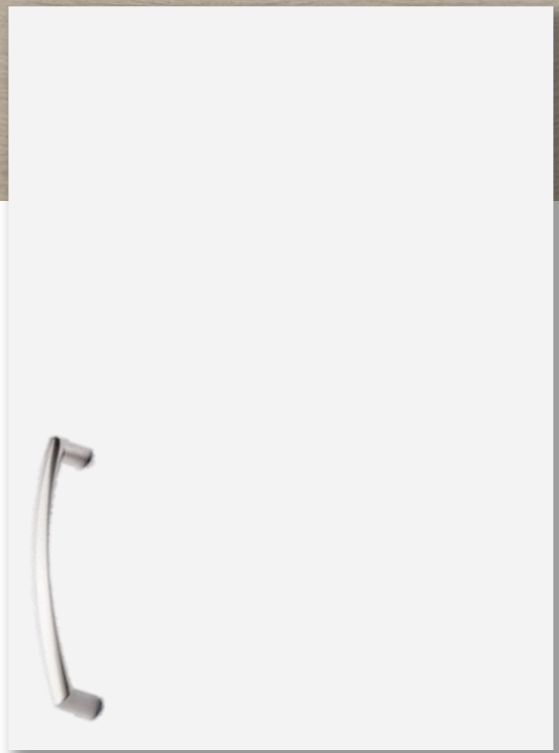
KITCHEN COUNTERTOPS



LUXURY VINYL PLANK



PAINT  
COLOUR



KITCHEN  
CABINETS

ISLAND PENDANTS



FOYER  
FIXTURE



# INTERIOR FINISHES

## 44 DUNNING

INTERIOR DOOR STYLE

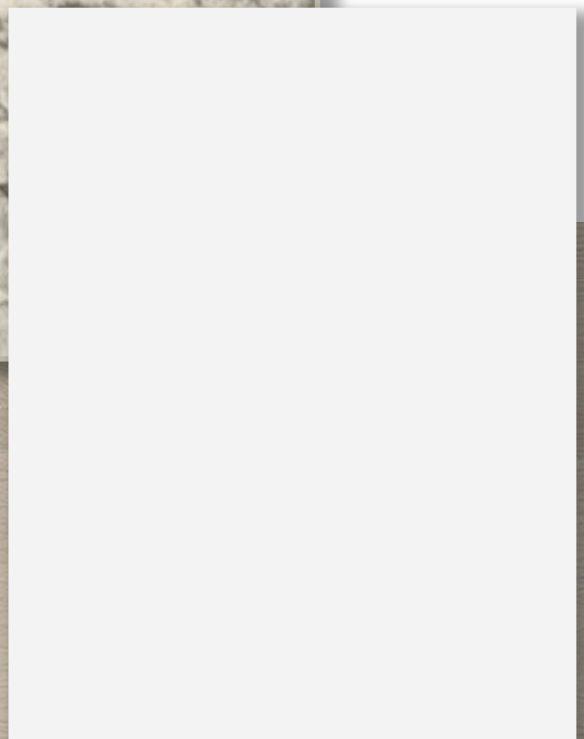
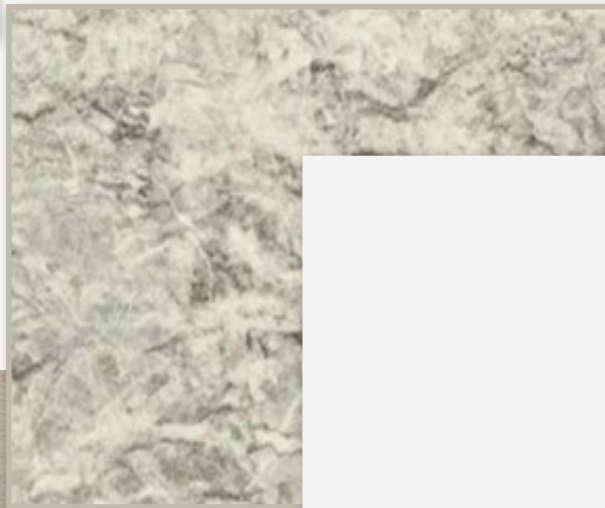


CARPET



BATHROOM  
COUNTERTOP

BATHROOM  
CABINERY



LUXURY VINYL PLANK

