

# SEMI-DETACHED



## 38 DUNNING WAY

ORCHARD PARK MEADOWS, ST. THOMAS

### THE DETAILS

PRICE	\$ 549,000
CLOSING DATE	OCTOBER 17, 2024
LOT NUMBER	26A
BEDROOMS	2
BATHS	2
SQFT	1225
GARAGE	1
MODEL	1 STOREY SEMI

**HAYHOE™**  
— HOMES —



#### SALES PROFESSIONAL

DAVE MATTHEWS

519.633.9215

dave.matthews@hayhoehomes.com

# SITE PLAN

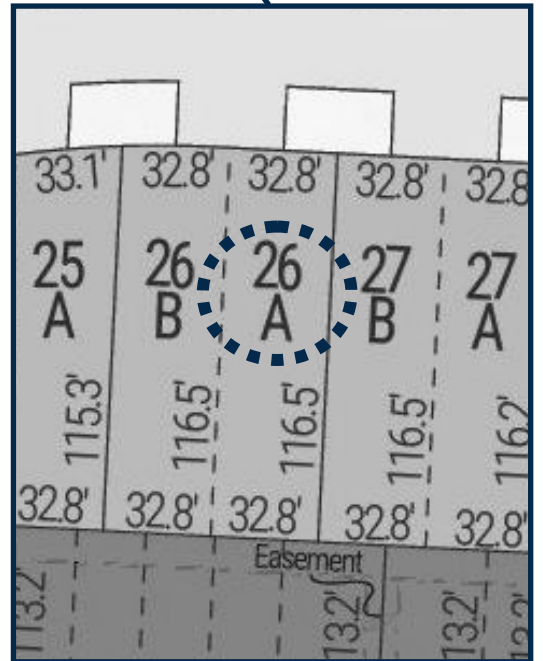


## 38 DUNNING

### EXTERIOR FEATURES:

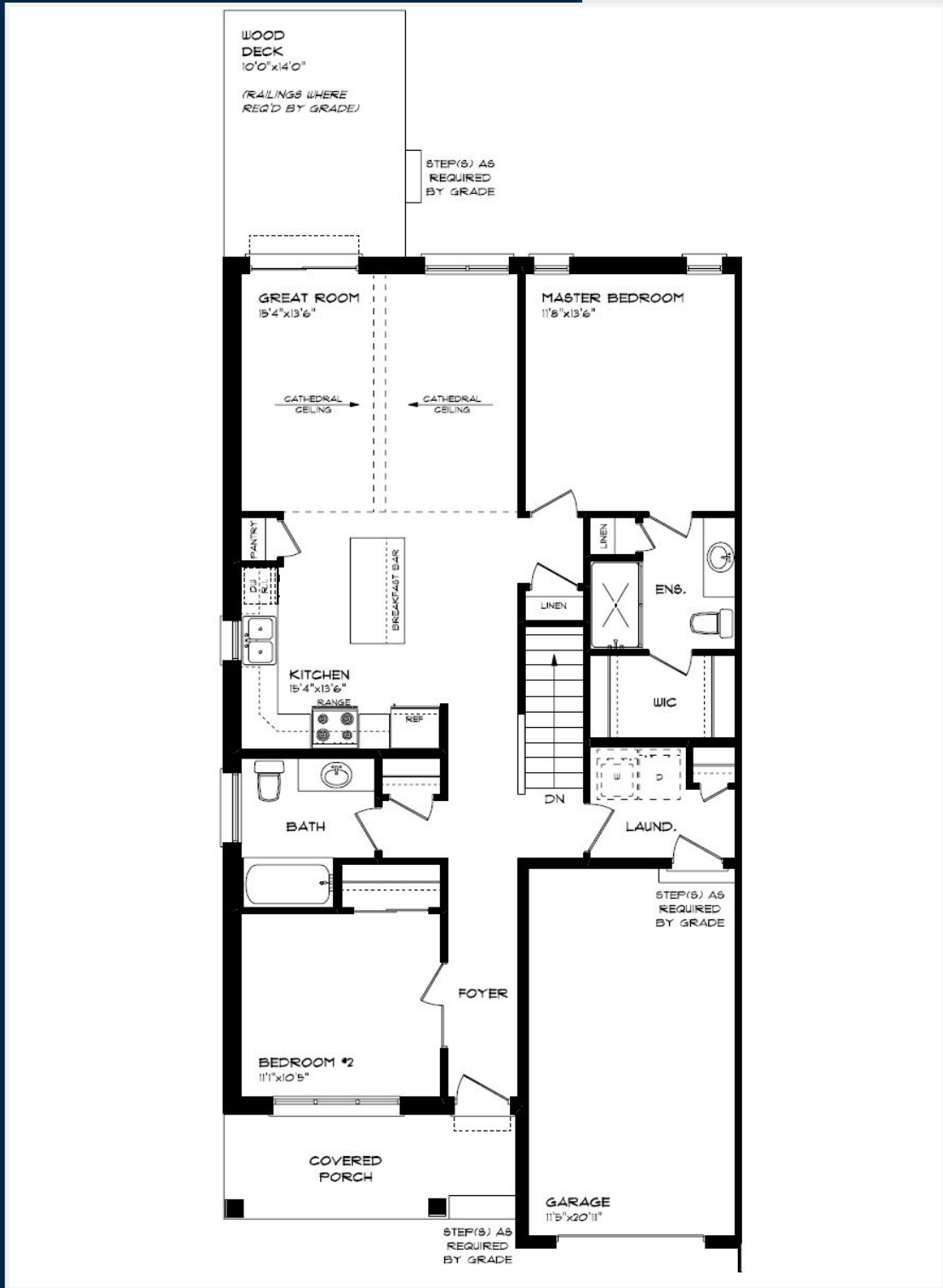
- KEYLESS ENTRY
- TREATED WOOD DECK
- ASPHALT DRIVEWAY
- WALKING TRAILS

**HAYHOE™**  
HOMES



# MAIN FLOOR

38 DUNNING WAY, ST. THOMAS



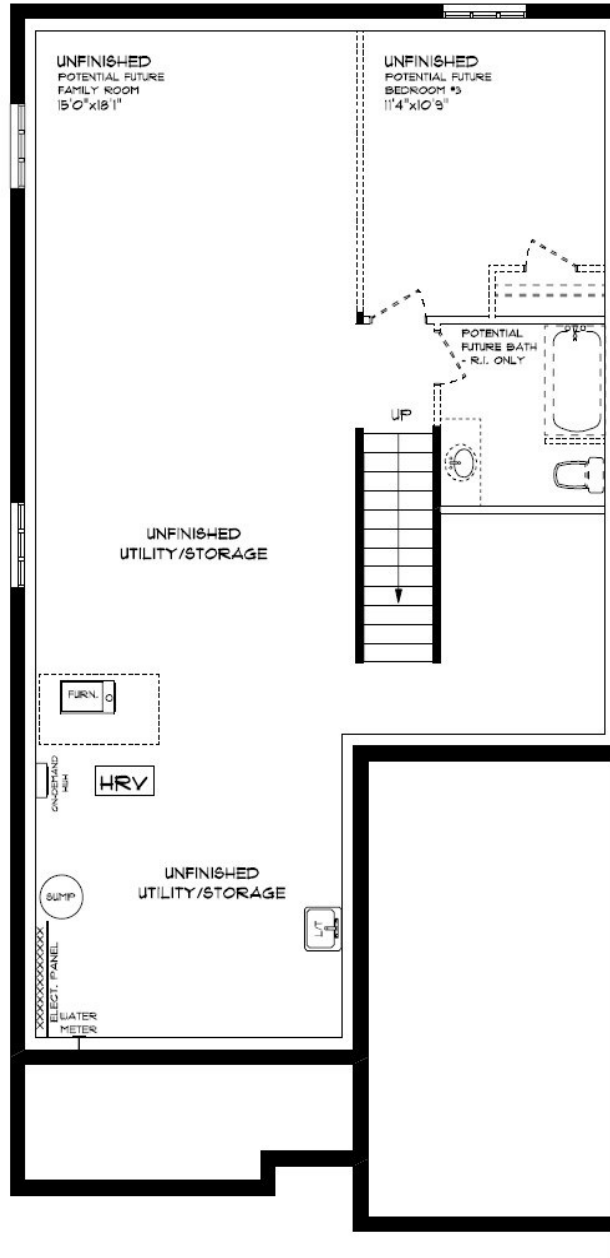
MAIN FLOOR:  
APPROX 1225 SQFT

- SINGLE CAR GARAGE
- KITCHEN ISLAND
- VINYL PLANK FLOORING
- QUARTZ COUNTERTOPS

**HAYHOE**<sup>TM</sup>  
HOMES

# BASEMENT

38 DUNNING WAY, ST. THOMAS



BASEMENT:  
UNFINISHED

AIR CONDITIONING  
GAS FURNACE WITH HRV  
HUMIDIFIER  
NEW HOME WARRANTY

**HAYHOE™**  
— HOMES —

# INTERIOR FINISHES

## 38 DUNNING



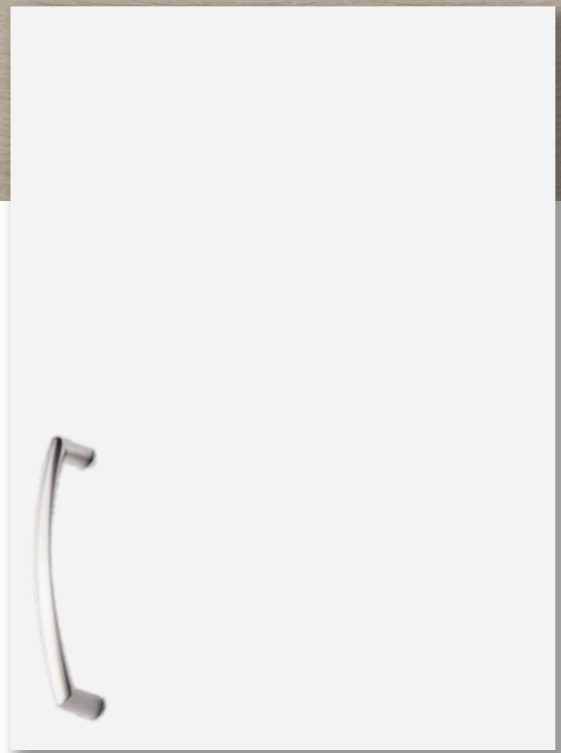
KITCHEN COUNTERTOPS



LUXURY VINYL PLANK



PAINT  
COLOUR



KITCHEN  
CABINETS

ISLAND PENDANTS



FOYER  
FIXTURE



# INTERIOR FINISHES

## 38 DUNNING

INTERIOR DOOR STYLE

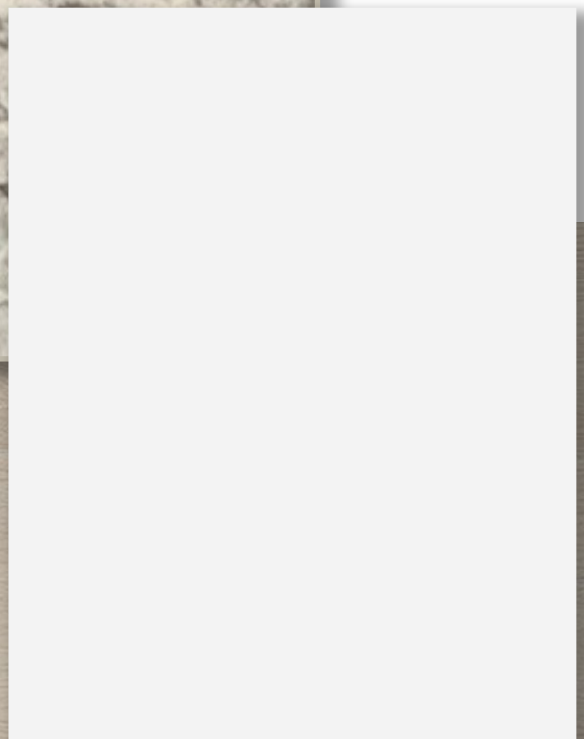
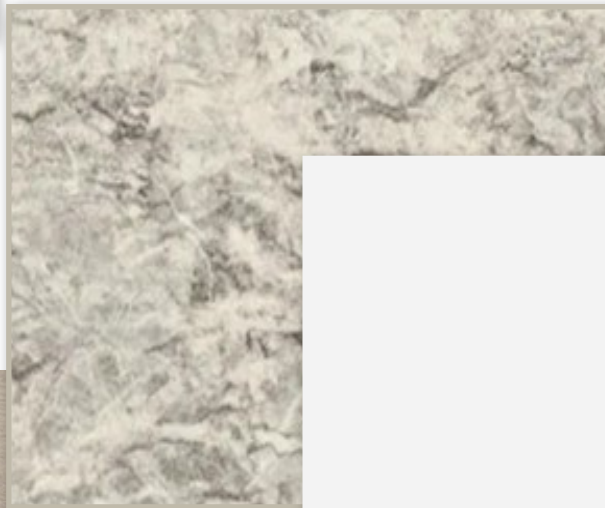


CARPET

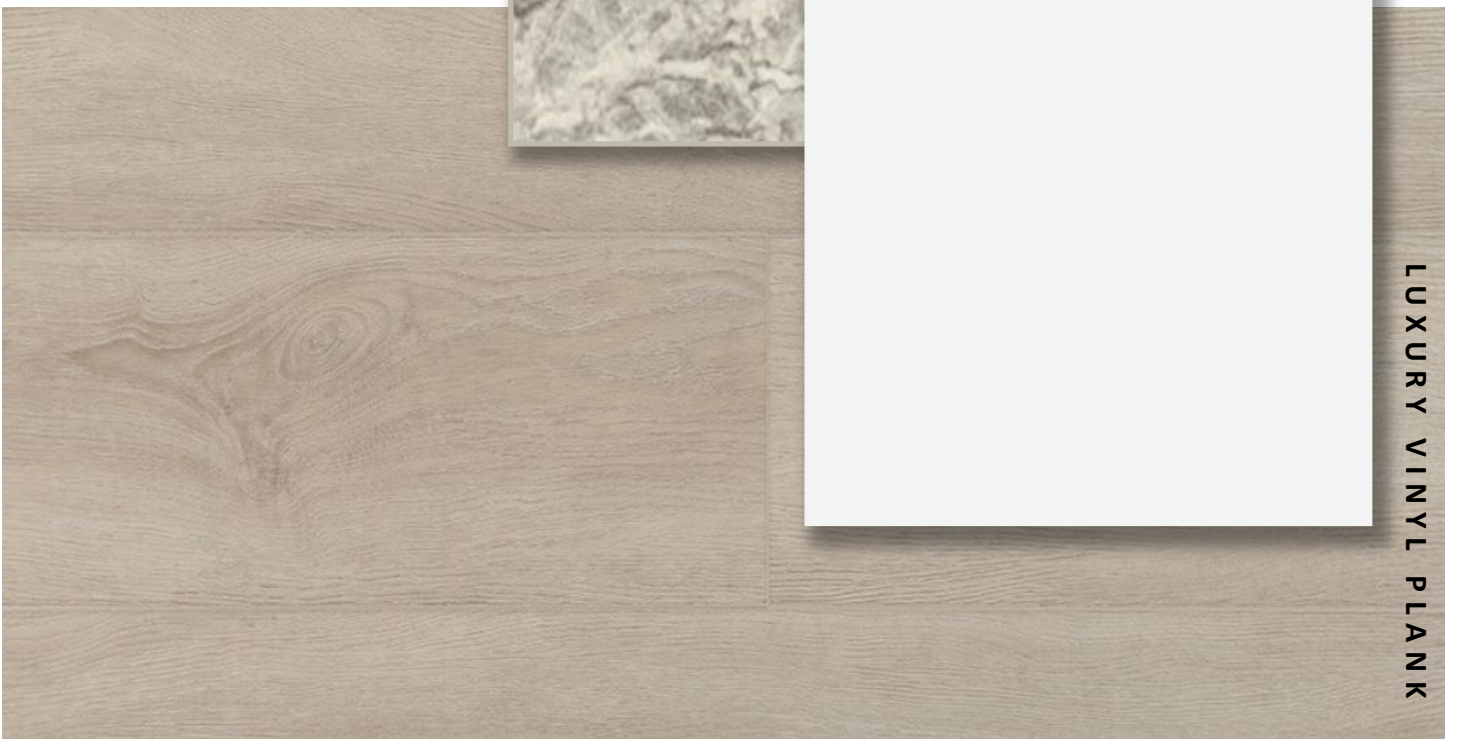


BATHROOM  
COUNTERTOP

BATHROOM  
CABINERY



LUXURY VINYL PLANK



PRICE, PRODUCTS, COLOURS & FEATURES ARE SUBJECT TO CHANGE WITHOUT NOTICE.  
COLOURS SHOWN MAY VARY FROM INSTALLED MATERIALS. E & O.E

NOVEMBER 2024