

SEMI-DETACHED



38 DUNNING WAY

ORCHARD PARK MEADOWS, ST. THOMAS

THE DETAILS

PRICE	\$ 565,000
CLOSING DATE	OCTOBER 17, 2024
LOT NUMBER	26A
BEDROOMS	2
BATHS	2
SQFT	1225
GARAGE	1
MODEL	1 STOREY SEMI

HAYHOE™
— HOMES —



SALES PROFESSIONAL

DAVE MATTHEWS

519.633.9215

dave.matthews@hayhoehomes.com

SITE PLAN

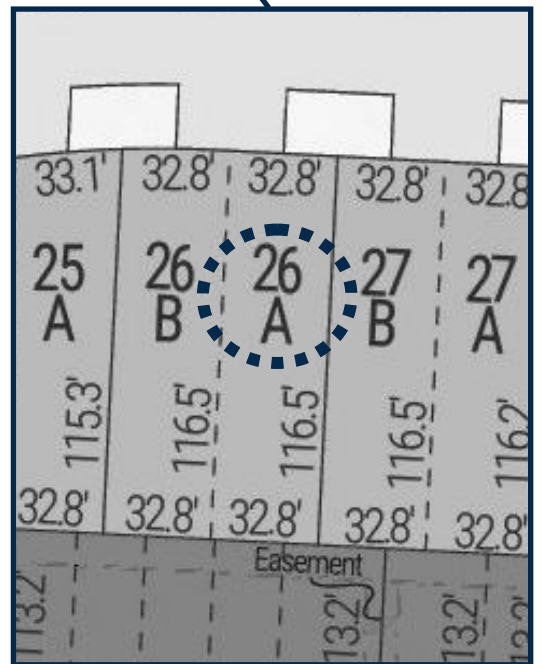


38 DUNNING

EXTERIOR FEATURES:

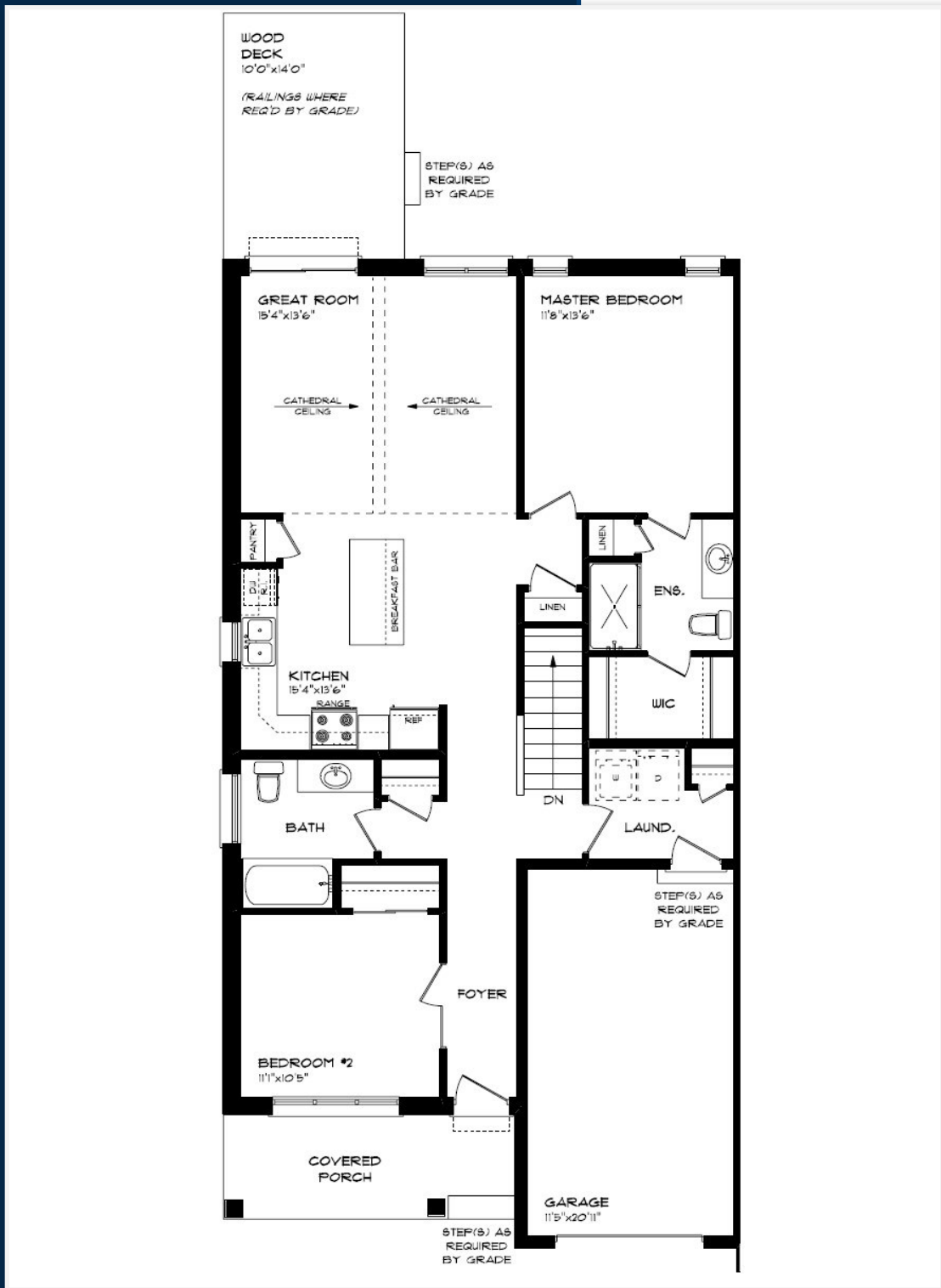
- KEYLESS ENTRY
- TREATED WOOD DECK
- ASPHALT DRIVEWAY
- WALKING TRAILS

HAYHOE™
HOMES



MAIN FLOOR

38 DUNNING WAY, ST. THOMAS



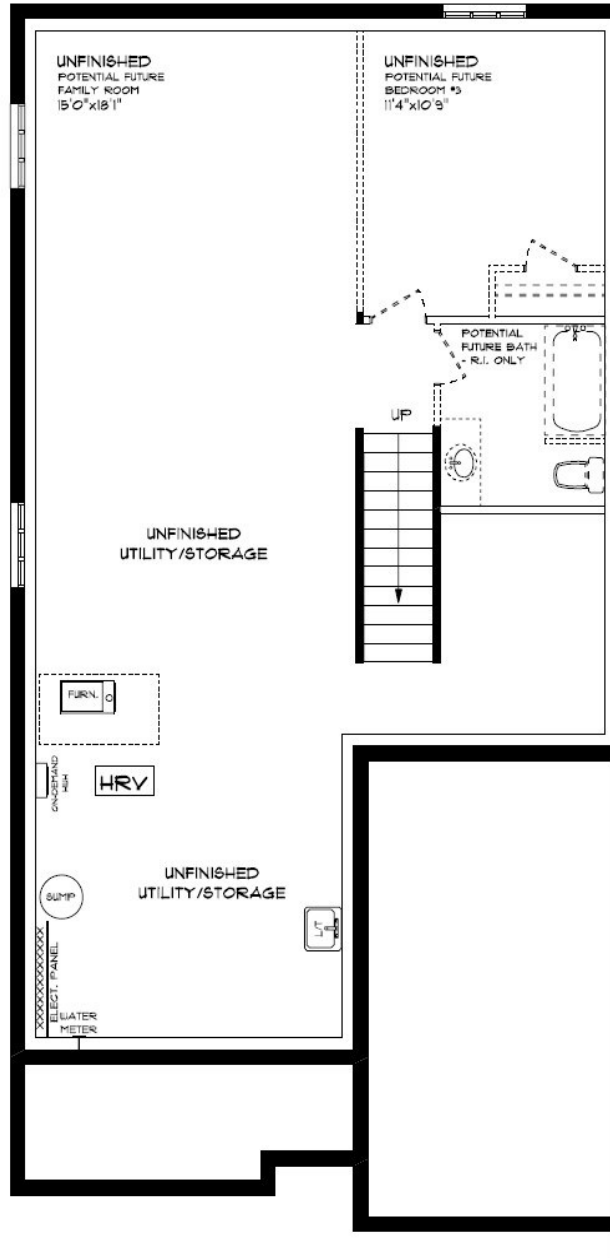
MAIN FLOOR:
APPROX 1225 SQFT

- SINGLE CAR GARAGE
- KITCHEN ISLAND
- VINYL PLANK FLOORING
- QUARTZ COUNTERTOPS

HAYHOETM
HOMES

BASEMENT

38 DUNNING WAY, ST. THOMAS



BASEMENT:
UNFINISHED

AIR CONDITIONING
GAS FURNACE WITH HRV
HUMIDIFIER
NEW HOME WARRANTY

HAYHOE™
— HOMES —

INTERIOR FINISHES

38 DUNNING



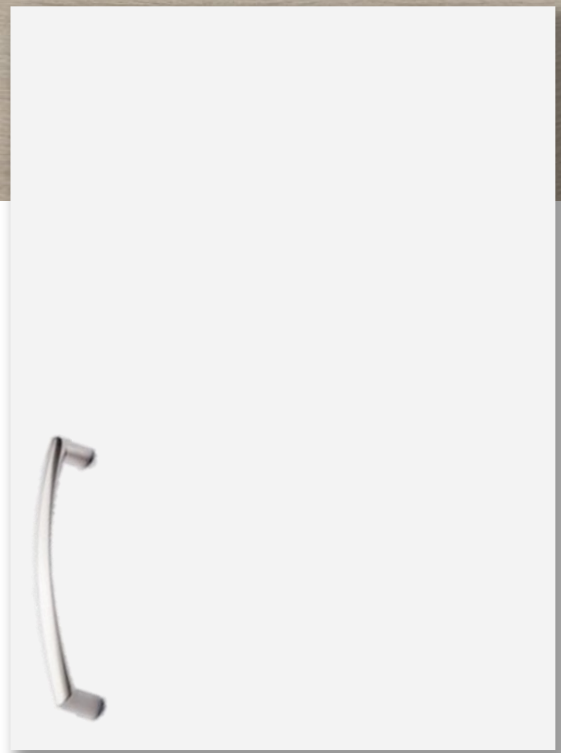
KITCHEN COUNTERTOPS



LUXURY VINYL PLANK



PAINT
COLOUR



KITCHEN
CABINETS

ISLAND PENDANTS



FOYER
FIXTURE



INTERIOR FINISHES

38 DUNNING

INTERIOR DOOR STYLE

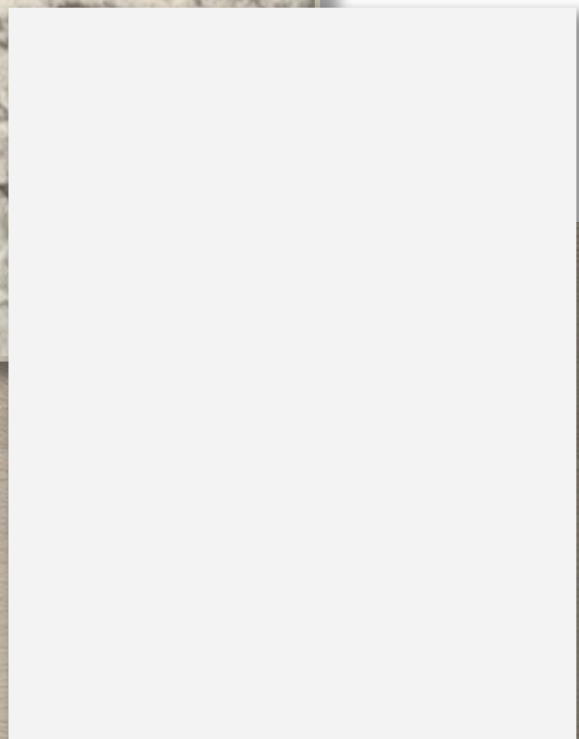
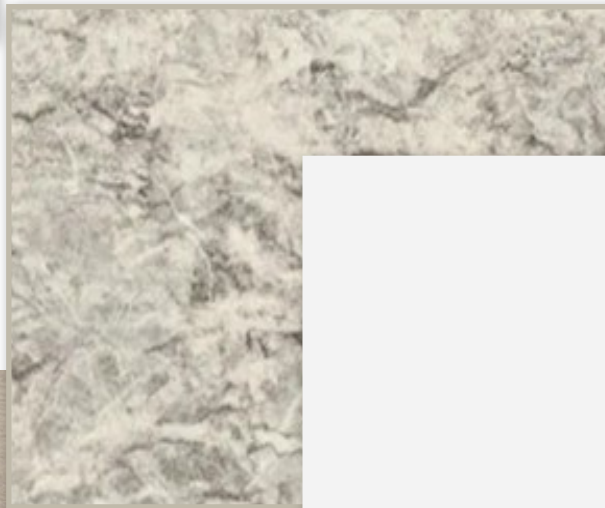


CARPET



BATHROOM
COUNTERTOP

BATHROOM
CABINERY



LUXURY VINYL PLANK

