

WILLOW RUN

65 WILLOW DRIVE

AYLMER | ONTARIO

TOWNHOME

PREMIUM
SPECS



THE DETAILS

PRICE	\$589,000
CLOSING DATE	April 9, 2025
LOT NUMBER	2B
BEDROOMS	1+2
BATHS	2.5
GARAGE	2
DRIVEWAY	19'
SQ FT	1,972
MODEL	Townhome

Emma Smith SALES PROFESSIONAL

519.409.1474 | emma.smith@hayhoehomes.com



www.HayhoeHomes.com

Price, products, colours & features are subject to change without notice. E. & O. E. NOVEMBER 2024

HAYHOETM
-HOMES-

WILLOW RUN

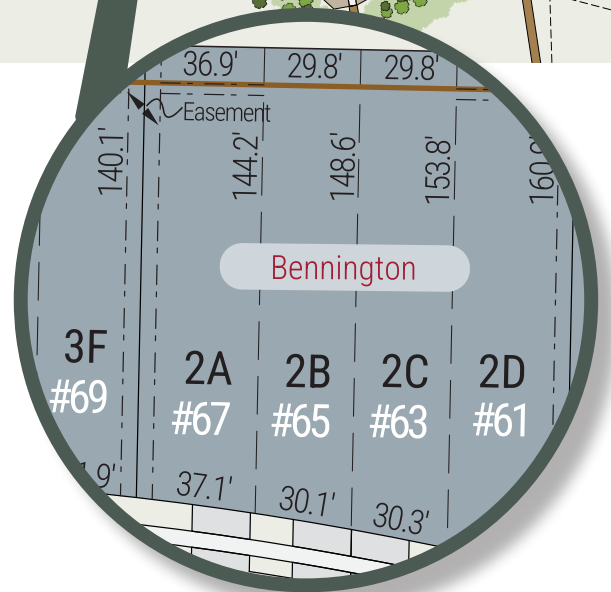
SITE PLAN

65 WILLOW DRIVE | AYLMER ON



exterior features

- KEYLESS ENTRY
- TREATED WOOD DECK
- BBQ GAS LINE
- ASPHALT DRIVEWAY
- WALKING TRAILS



WILLOW RUN

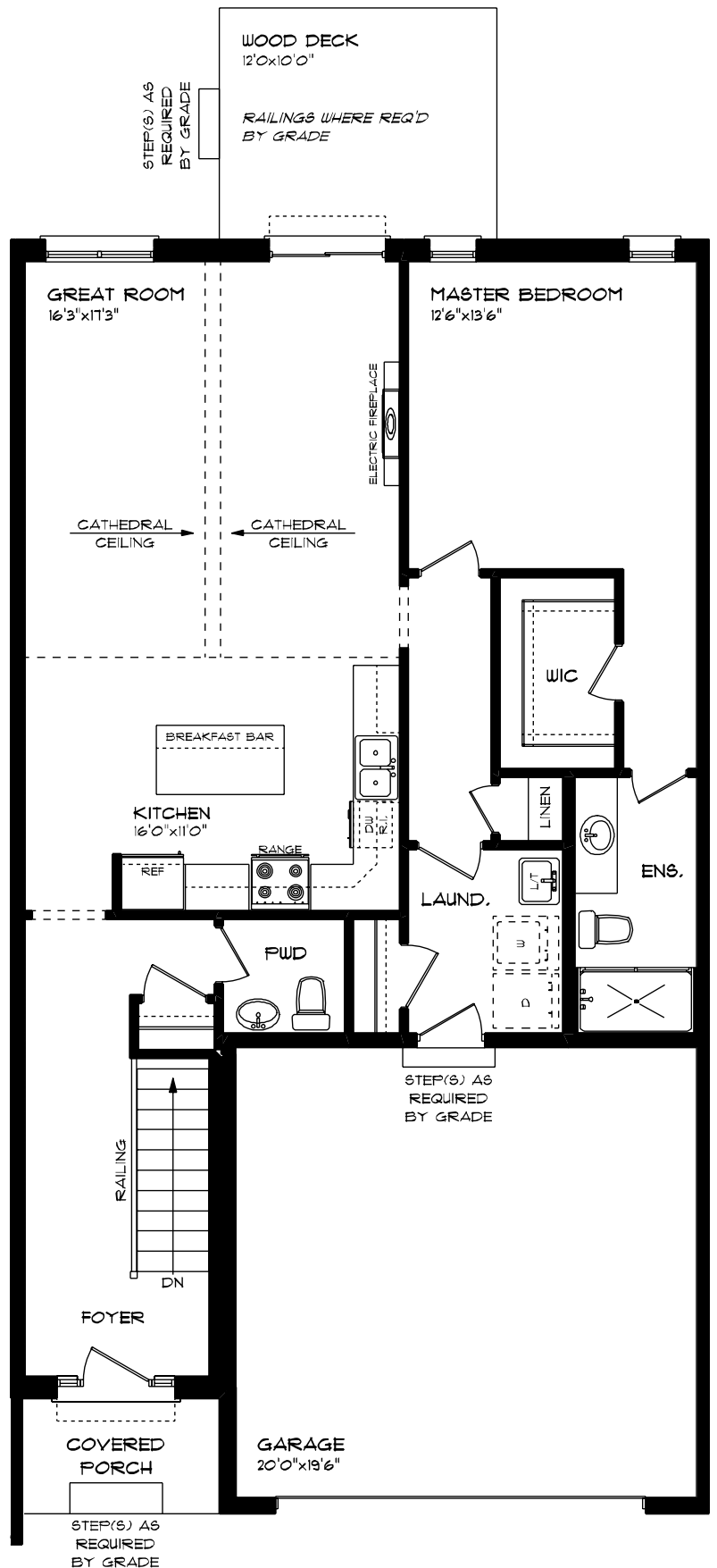
65 WILLOW DRIVE

MAIN FLOOR

1,180 sq ft

features

- MAIN FLOOR LAUNDRY
- QUARTZ COUNTERTOPS
- KITCHEN BACKSPLASH
- DOUBLE CAR GARAGE



WILLOW RUN

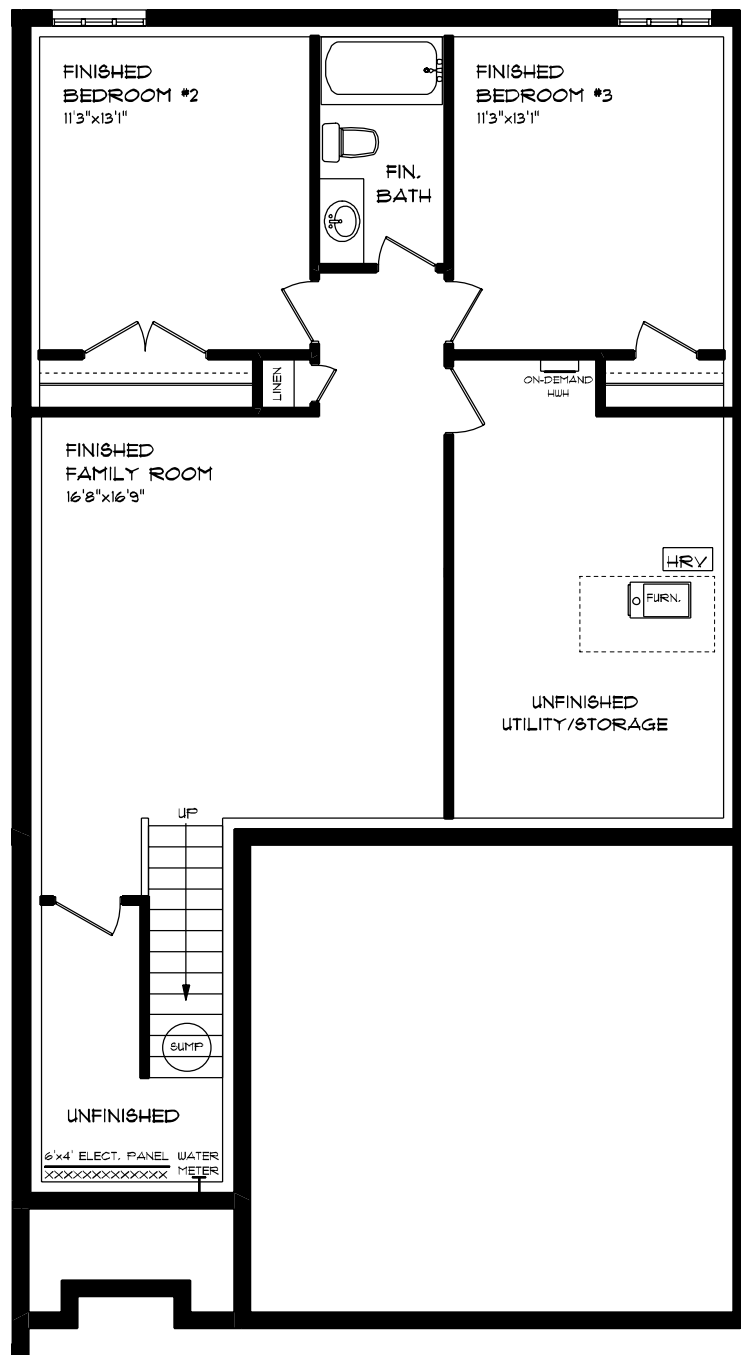
65 WILLOW DRIVE

LOWER LEVEL

792 sq ft

features

- CARPET FLOORING
- AIR CONDITIONING
- GAS FURNACE WITH HRV
- HUMIDIFIER
- NEW HOME WARRANTY



WILLOW RUN

65 WILLOW DRIVE

INTERIOR FINISHES



KITCHEN BACKSPLASH



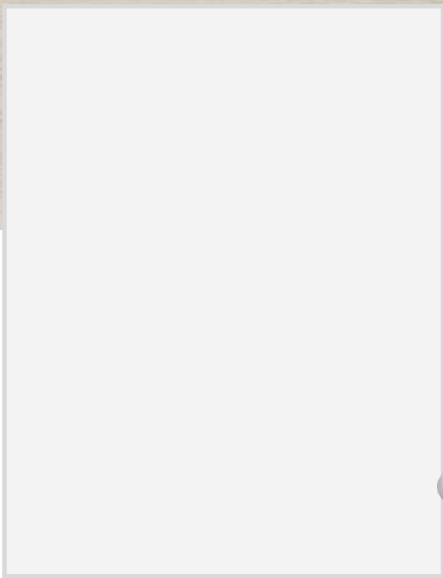
QUARTZ KITCHEN COUNTERTOPS



LUXURY VINYL PLANK



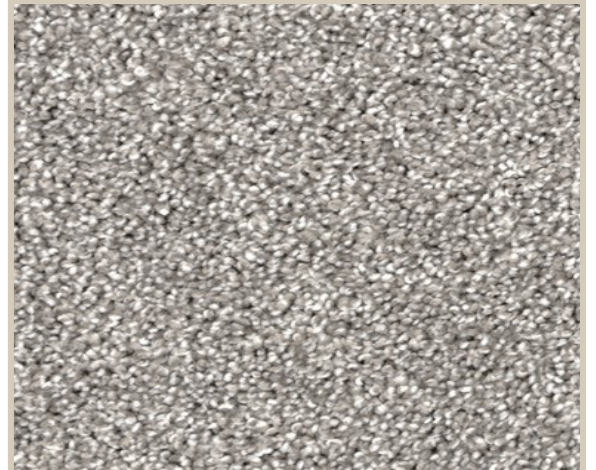
MELAMINE KITCHEN CABINETRY



MELAMINE VANITY CABINETRY



LAMINATE VANITY COUNTERTOPS



CARPET