

WILLOW RUN

63 WILLOW DRIVE

AYLMER | ONTARIO

TOWNHOME



THE DETAILS

PRICE	\$589,000
CLOSING DATE	April 10, 2025
LOT NUMBER	2C
BEDROOMS	1+2
BATHS	2.5
GARAGE	2
DRIVEWAY	19'
SQ FT	1,972
MODEL	Townhome

Emma Smith SALES PROFESSIONAL

519.409.1474 | emma.smith@hayhoehomes.com



WILLOW RUN

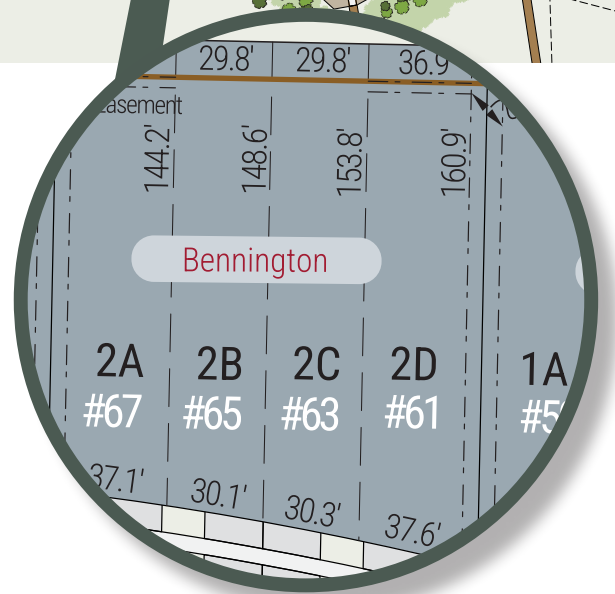
SITE PLAN

63 WILLOW DRIVE | AYLMER ON



exterior features

- KEYLESS ENTRY
- TREATED WOOD DECK
- BBQ GAS LINE
- ASPHALT DRIVEWAY
- WALKING TRAILS



WILLOW RUN

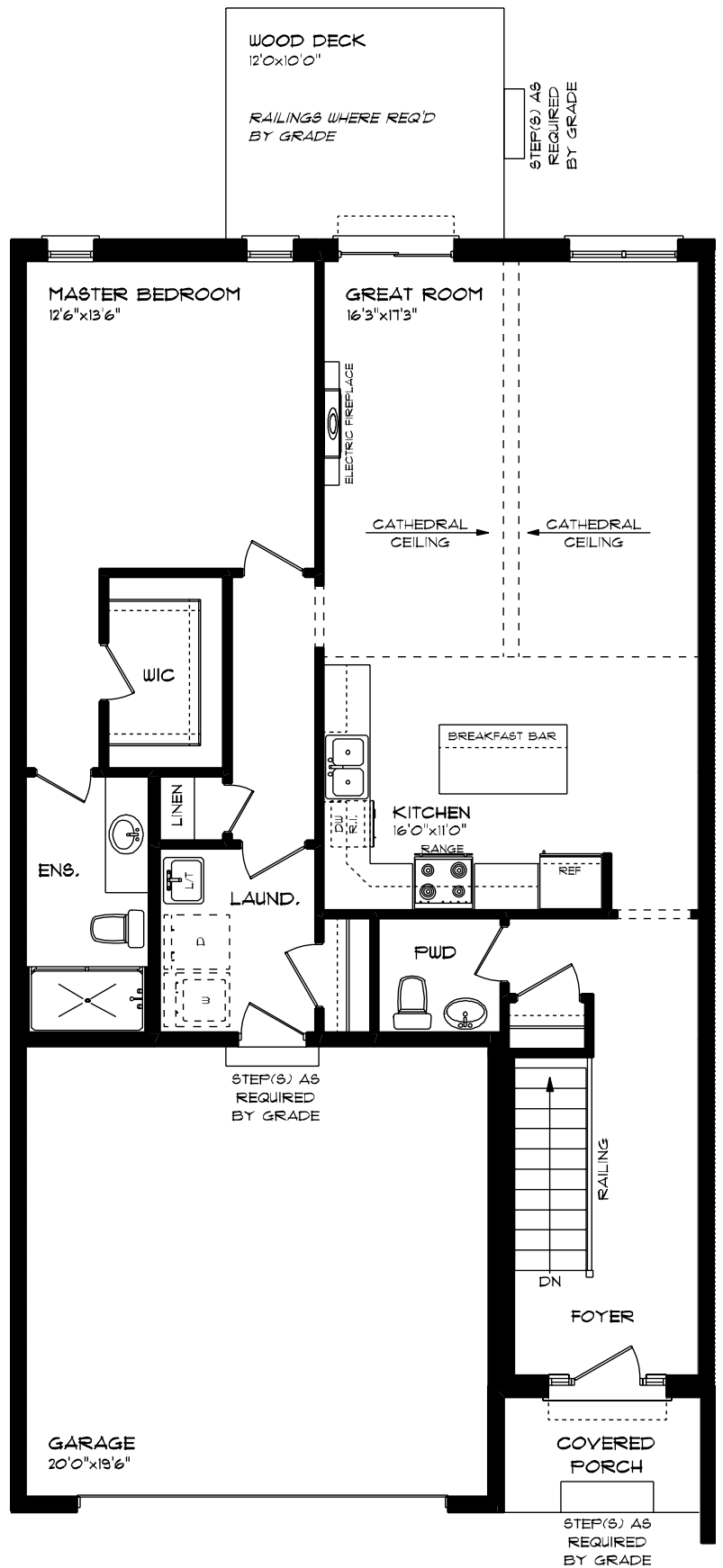
63 WILLOW DRIVE

MAIN FLOOR

1,180 sq ft

features

- MAIN FLOOR LAUNDRY
- QUARTZ COUNTERTOPS
- KITCHEN BACKSPLASH
- DOUBLE CAR GARAGE



WILLOW RUN

63 WILLOW DRIVE

LOWER LEVEL

792 sq ft

features

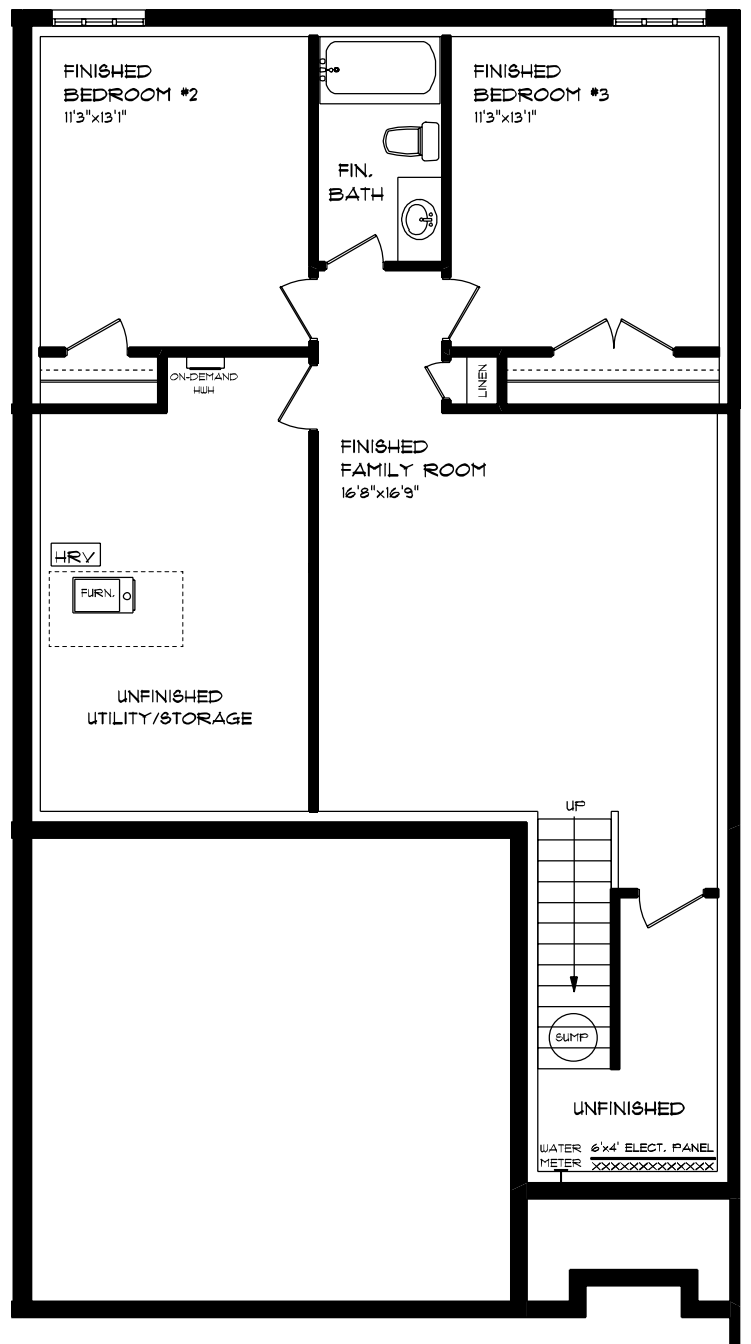
CARPET FLOORING

AIR CONDITIONING

GAS FURNACE WITH HRV

HUMIDIFIER

NEW HOME WARRANTY



WILLOW RUN

63 WILLOW DRIVE

INTERIOR FINISHES



KITCHEN BACKSPLASH



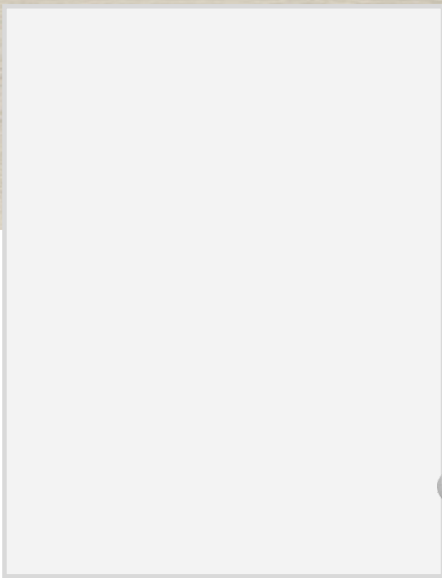
QUARTZ KITCHEN COUNTERTOPS



LUXURY VINYL PLANK



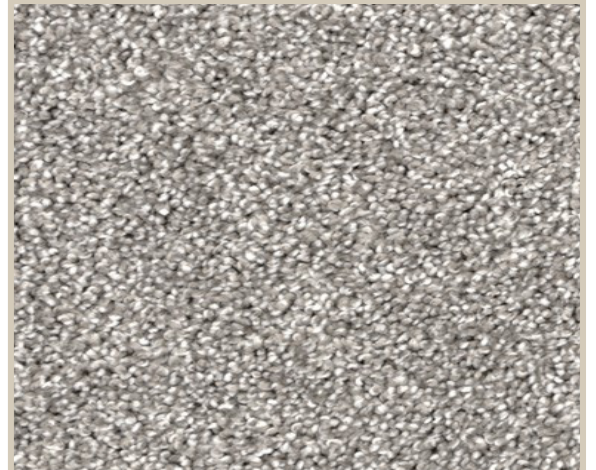
MELAMINE KITCHEN CABINETS



MELAMINE VANITY CABINETS



LAMINATE VANITY COUNTERTOPS



CARPET