

# INVENTORY HOME

## BASEMENT SUITE



## 2 DUNNING WAY

ORCHARD PARK MEADOWS, ST. THOMAS

### THE DETAILS

PRICE	\$ 724,000
CLOSING DATE	OCTOBER 4, 2024
LOT NUMBER	36
BEDROOMS	3
BATHS	3
SQFT	2392
GARAGE	2
MODEL	GLENMORE

**HAYHOE™**  
— HOMES —



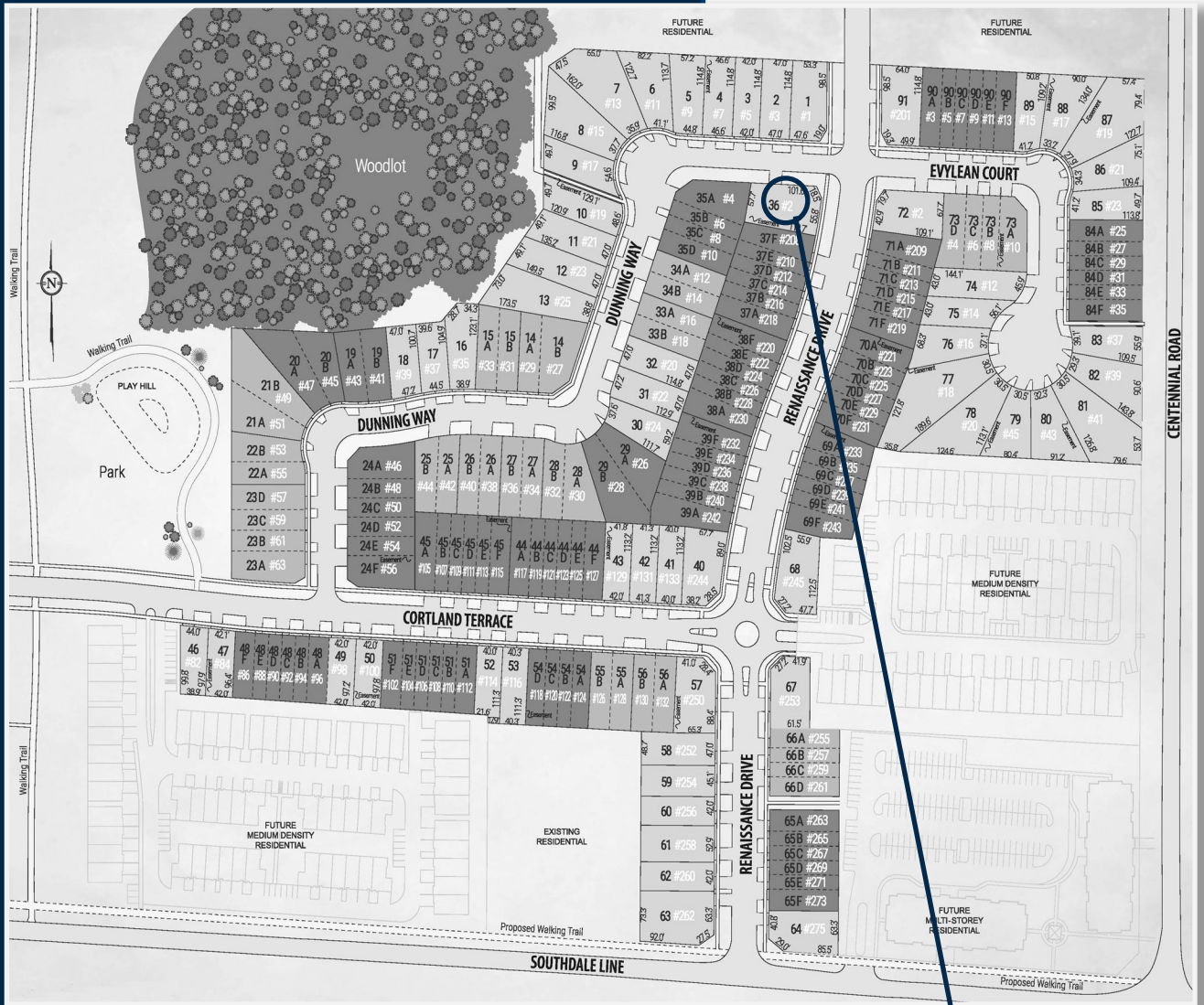
### SALES PROFESSIONAL

DAVE MATTHEWS

519.633.9215

dave.matthews@hayhoehomes.com

# SITE PLAN

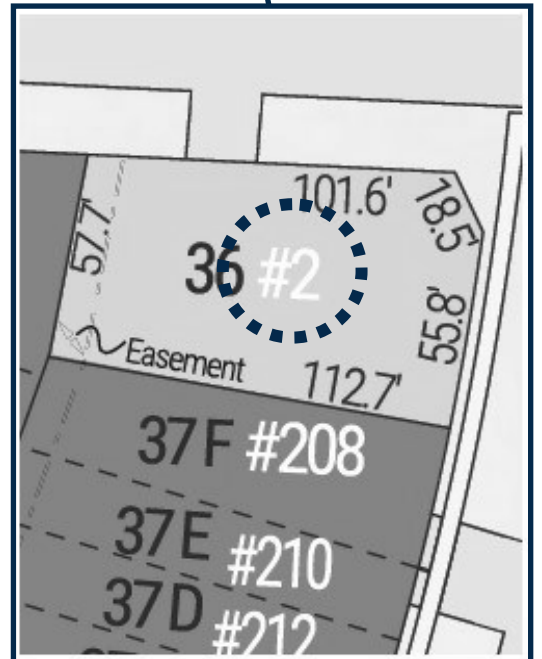


## 2 DUNNING WAY

### EXTERIOR FEATURES:

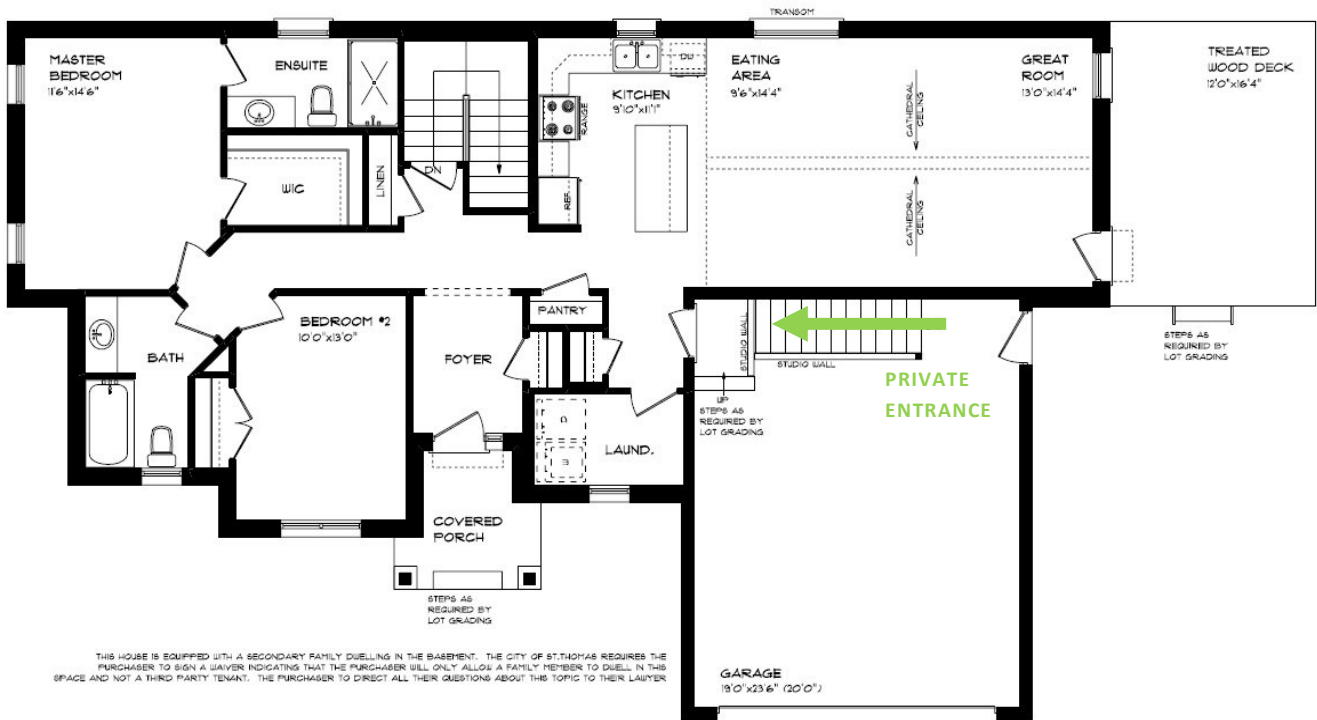
- KEYLESS ENTRY
- TREATED WOOD DECK
- BBQ GAS LINE
- ASPHALT DRIVEWAY
- WALKING TRAILS

**HAYHOE™**  
HOMES



# MAIN FLOOR

2 DUNNING WAY,  
ST. THOMAS



## BASEMENT SUITE

LUXURY VINYL PLANK FLOORING

CATHEDRAL CEILING

CUSTOM CABINETS

MAIN FLOOR LAUNDRY

WALK-IN CLOSET

STAIRS FROM GARAGE DOWN

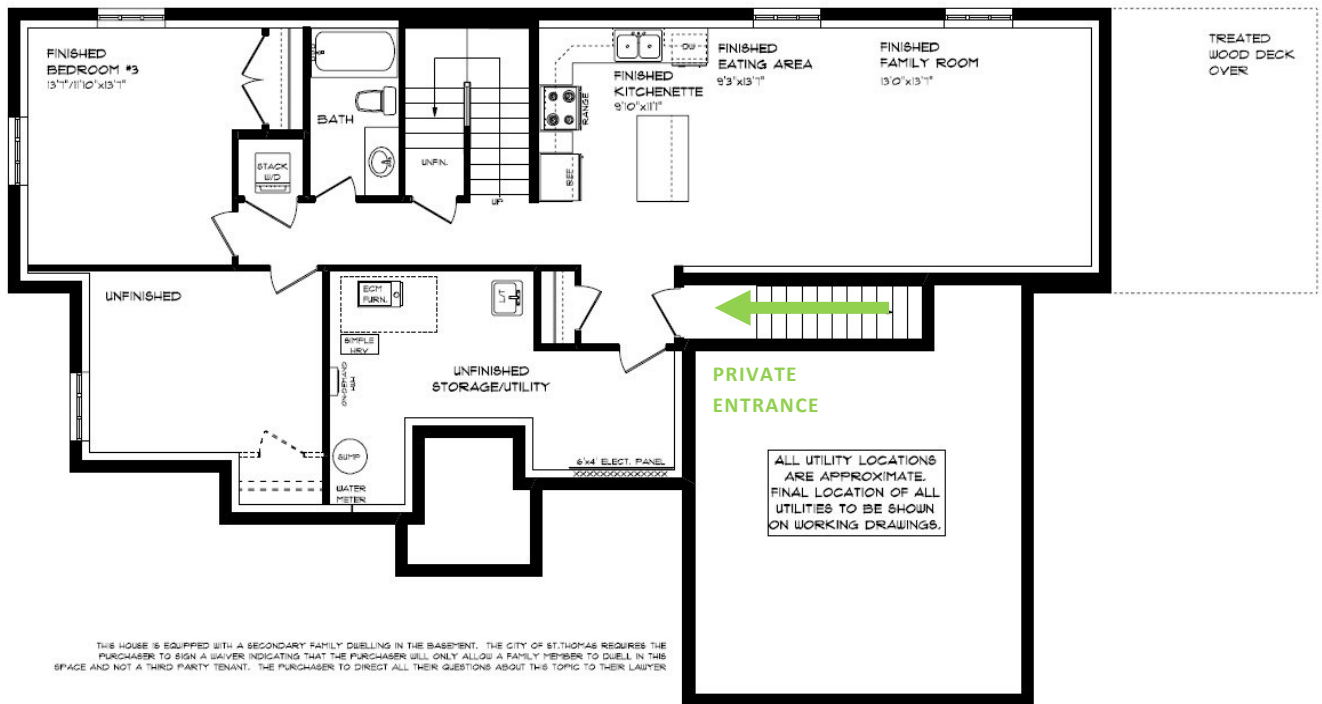
MAIN FLOOR:

APPROX 1444 SQFT

**HAYHOE**<sup>TM</sup>  
— HOMES —

# BASEMENT

2 DUNNING WAY,  
ST. THOMAS



## BASEMENT SUITE

LUXURY VINYL PLANK FLOORING

KITCHENETTE

SECONDARY LAUNDRY

STAIRS FROM GARAGE DOWN

AIR CONDITIONING

GAS FURNACE WITH HRV

HUMIDIFIER

NEW HOME WARRANTY

BASEMENT:

APPROX 948 SQFT

**HAYHOE**<sup>TM</sup>  
HOMES

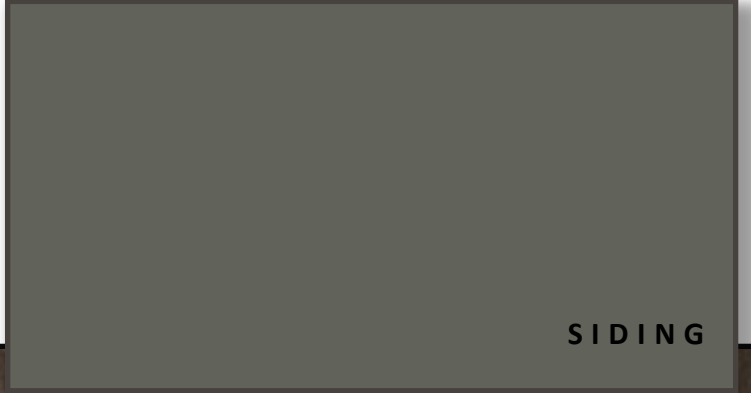
# EXTERIOR FINISHES

SHINGLES

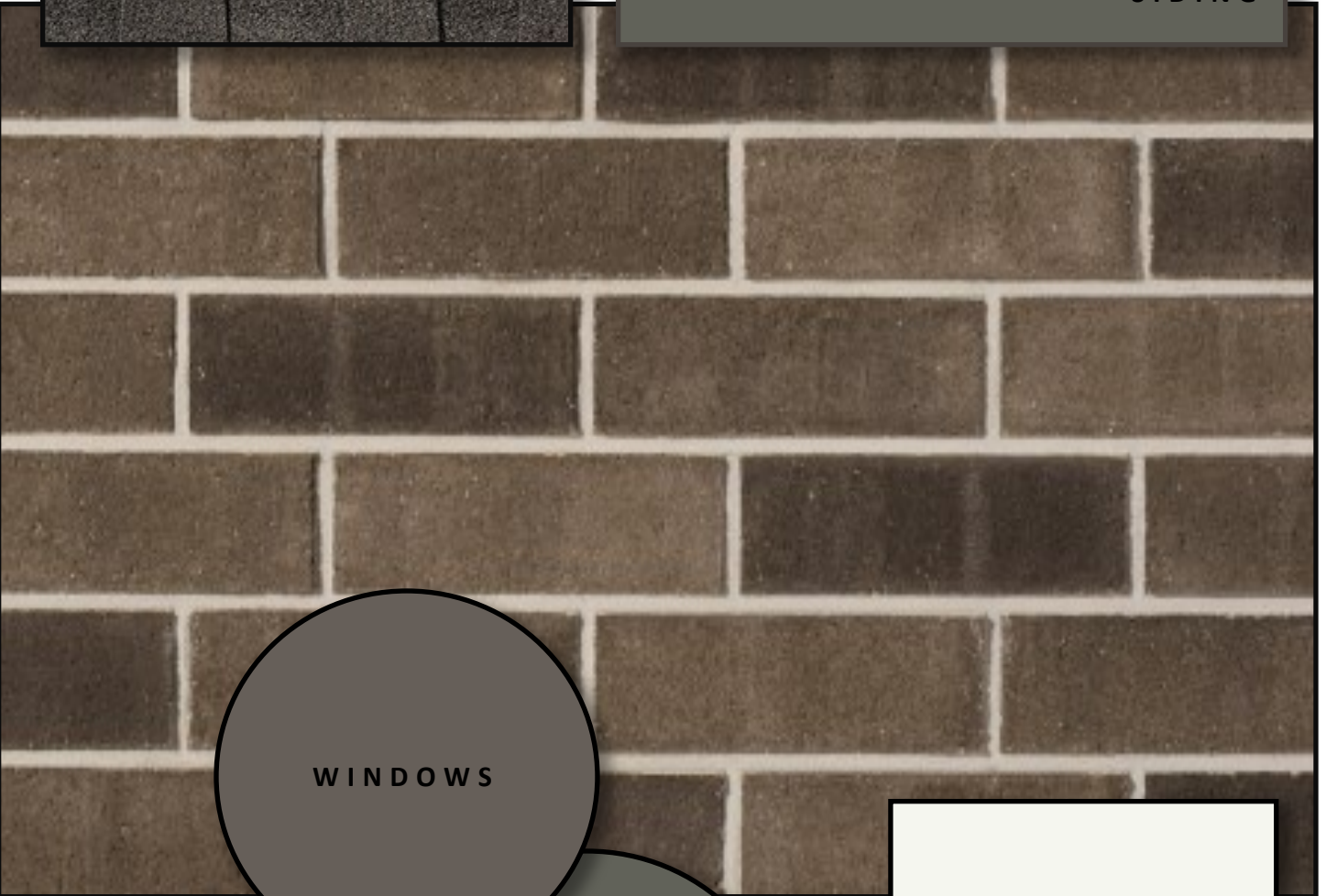


2 Dunning Way

SIDING



BRICK



WINDOWS



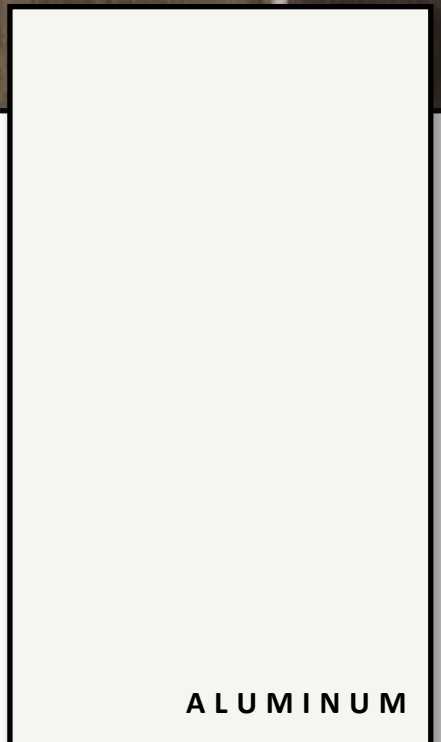
FRONT  
DOOR



GARAGE DOOR



ALUMINUM



# INTERIOR FINISHES

## 2 Dunning Way

KITCHEN BACKSPLASH



KITCHEN COUNTERTOPS



HARDWOOD



PAINT  
COLOUR



MAIN  
FLOOR TILE



KITCHEN  
CABINETRY

**HAYHOE™**  
**•HOMES•**

# INTERIOR FINISHES

## 2 Dunning Way

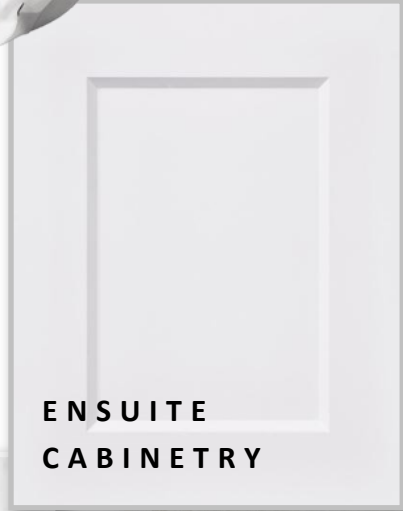
INTERIOR DOOR STYLE



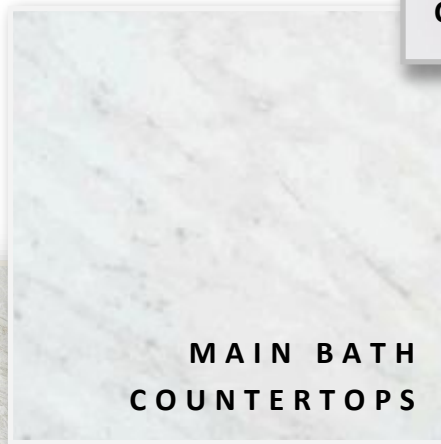
CARPET



ENSUITE  
COUNTERTOPS



ENSUITE  
CABINETRY



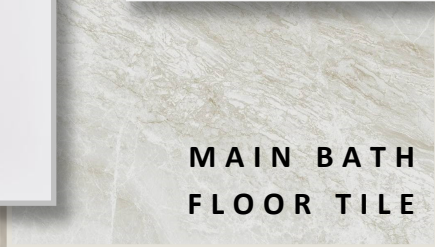
MAIN BATH  
COUNTERTOPS



ENSUITE  
FLOOR TILE



MAIN BATH  
CABINETRY



MAIN BATH  
FLOOR TILE



KITCHENETTE  
COUNTERTOP



KITCHENETTE  
BACKSPLASH



KITCHENETTE  
CABINETRY



LVP IN  
BASEMENT

**HAYHOE™**  
**— HOMES —**

PRICE, PRODUCTS, COLOURS & FEATURES ARE  
SUBJECT TO CHANGE WITHOUT NOTICE.

CREATED APRIL 9, 2024