

# INVENTORY HOME



## 61 CANARY STREET

NORTHCREST ESTATES, TILLSONBURG

### THE DETAILS

PRICE	\$ 695,000
CLOSING DATE	AUGUST 23, 2024
LOT NUMBER	39, PHASE 2
BEDROOMS	2
BATHS	2
SQFT	1444
GARAGE	2
MODEL	GLENMORE

**HAYHOE™**  
— HOMES —



#### SALES PROFESSIONAL

EMMA SMITH

519.409.1474

[emma.smith@hayhoehomes.com](mailto:emma.smith@hayhoehomes.com)

# SITE PLAN

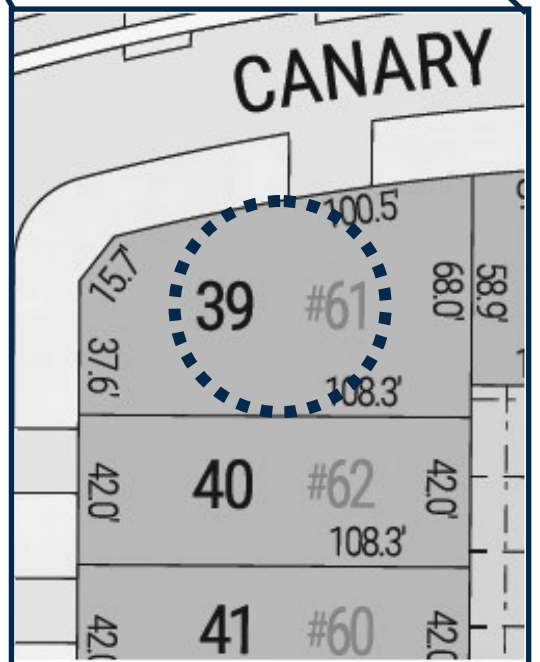


## 61 CANARY ST.

### EXTERIOR FEATURES:

- KEYLESS ENTRY
- TREATED WOOD DECK
- BBQ GAS LINE
- ASPHALT DRIVEWAY
- WALKING TRAILS

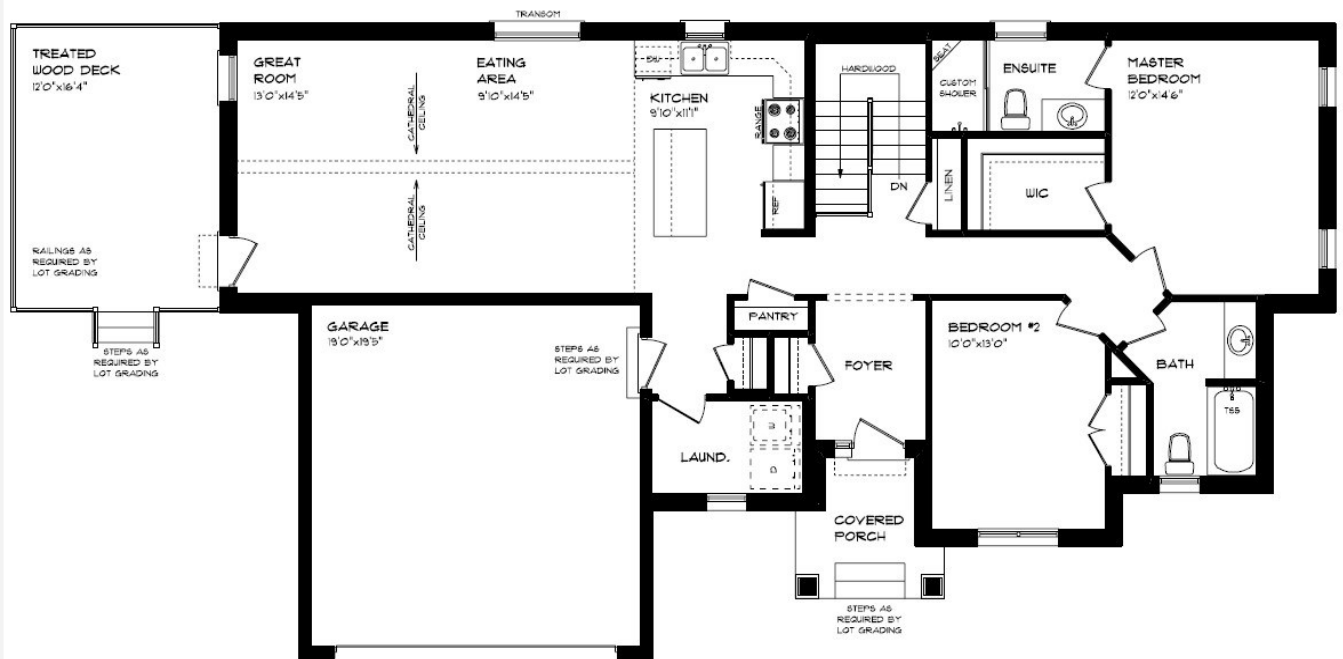
**HAYHOE™**  
HOMES



**NORTHCREST**  
ESTATES  
PHASE 2

# MAIN FLOOR

61 CANARY STREET,  
TILLSONBURG



LUXURY VINYL PLANK FLOORING

CUSTOM TILED SHOWER

CATHEDRAL CEILING

HARDWOOD STAIRS

CUSTOM CABINETRY

MAIN FLOOR LAUNDRY

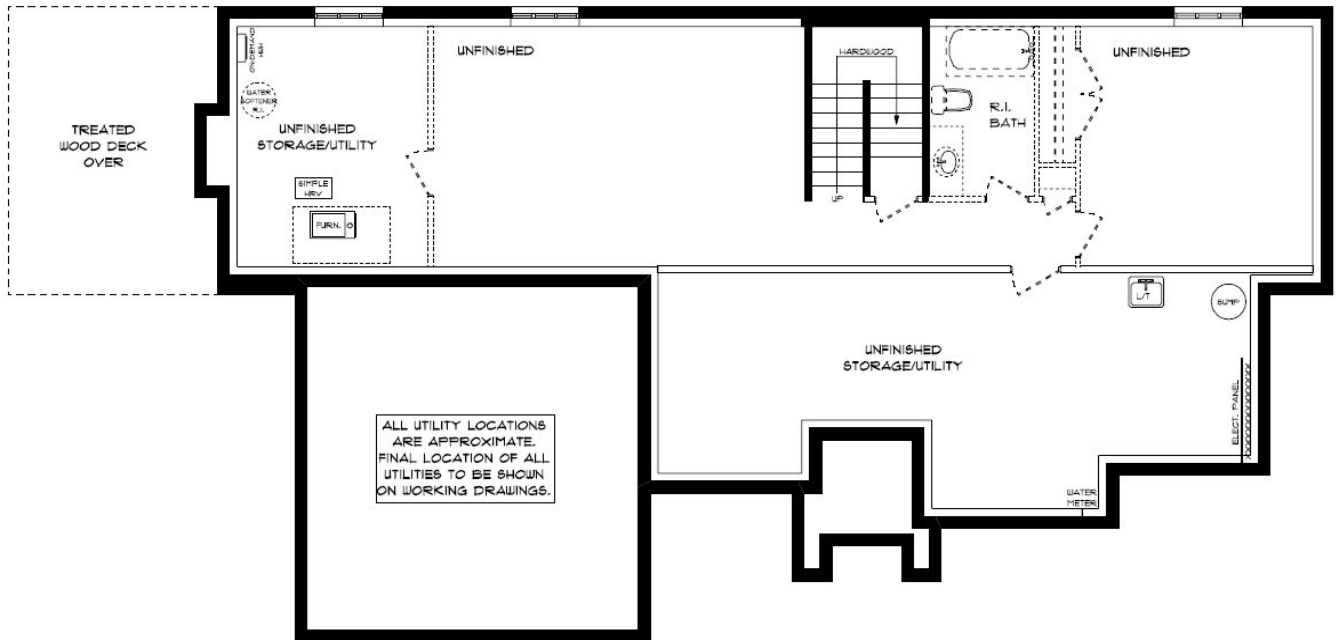
WALK-IN CLOSET

MAIN FLOOR:  
APPROX 1444 SQFT

**HAYHOE™**  
— HOMES —

# BASEMENT

61 CANARY STREET,  
TILLSONBURG



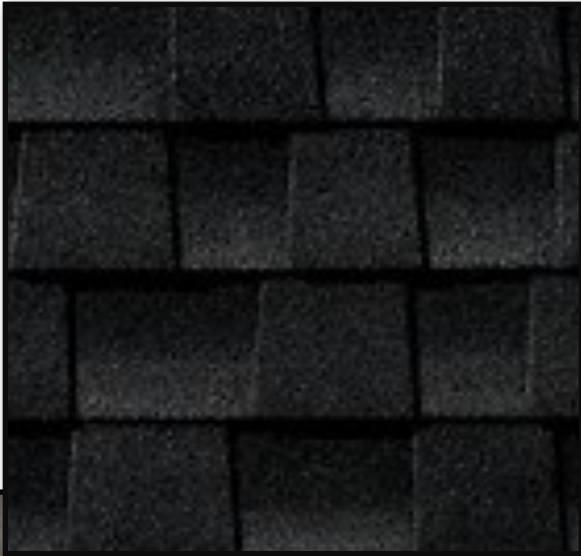
AIR CONDITIONING  
GAS FURNACE WITH HRV  
HUMIDIFIER  
NEW HOME WARRANTY

BASEMENT:  
UNFINISHED

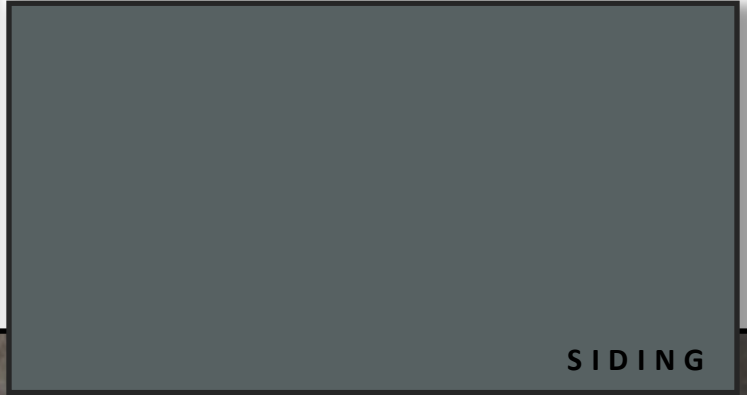
**HAYHOE™**  
— HOMES —

# EXTERIOR FINISHES

SHINGLES



61 Canary Street



SIDING



BRICK

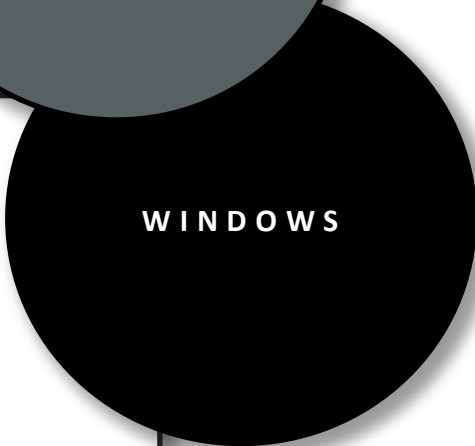
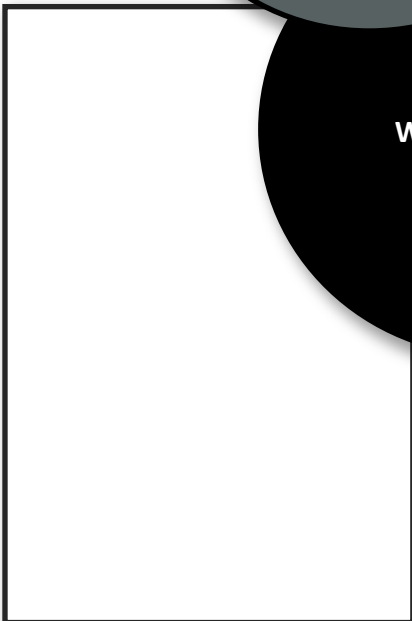


FRONT  
DOOR

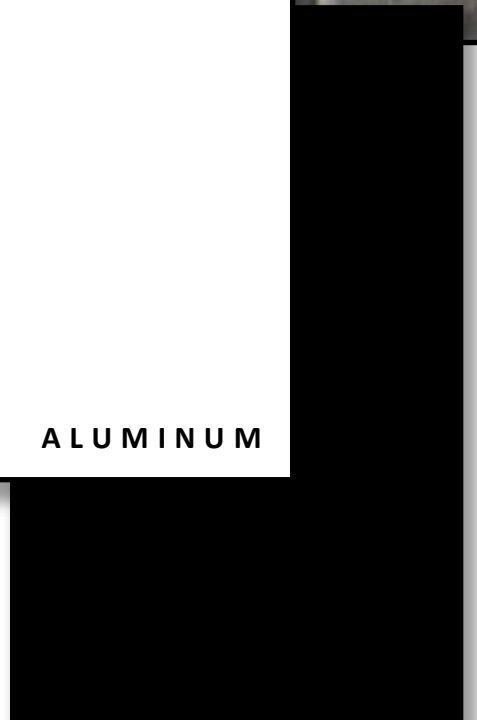


ALUMINUM

GARAGE DOOR



WINDOWS



ALUMINUM



# INTERIOR FINISHES

61 Canary St

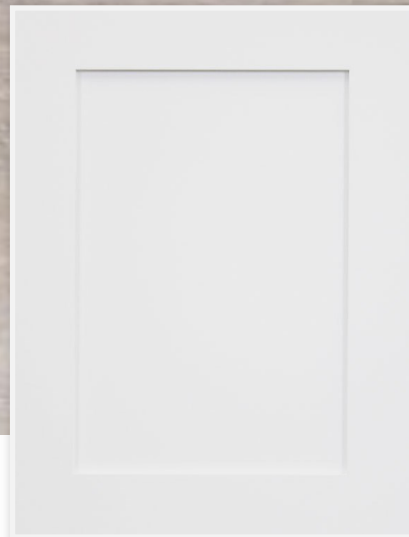
KITCHEN BACKSPLASH



KITCHEN COUNTERTOPS



LUXURY VINYL PLANK



KITCHEN PERIMETER



KITCHEN ISLAND



PAINT COLOUR



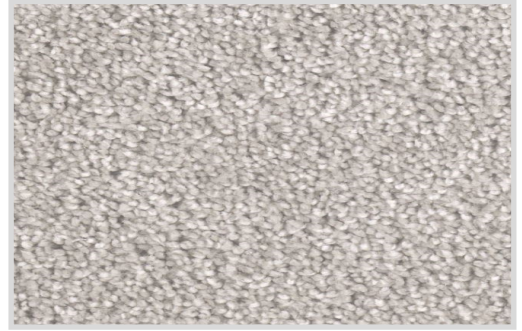
# INTERIOR FINISHES

## 61 Canary St

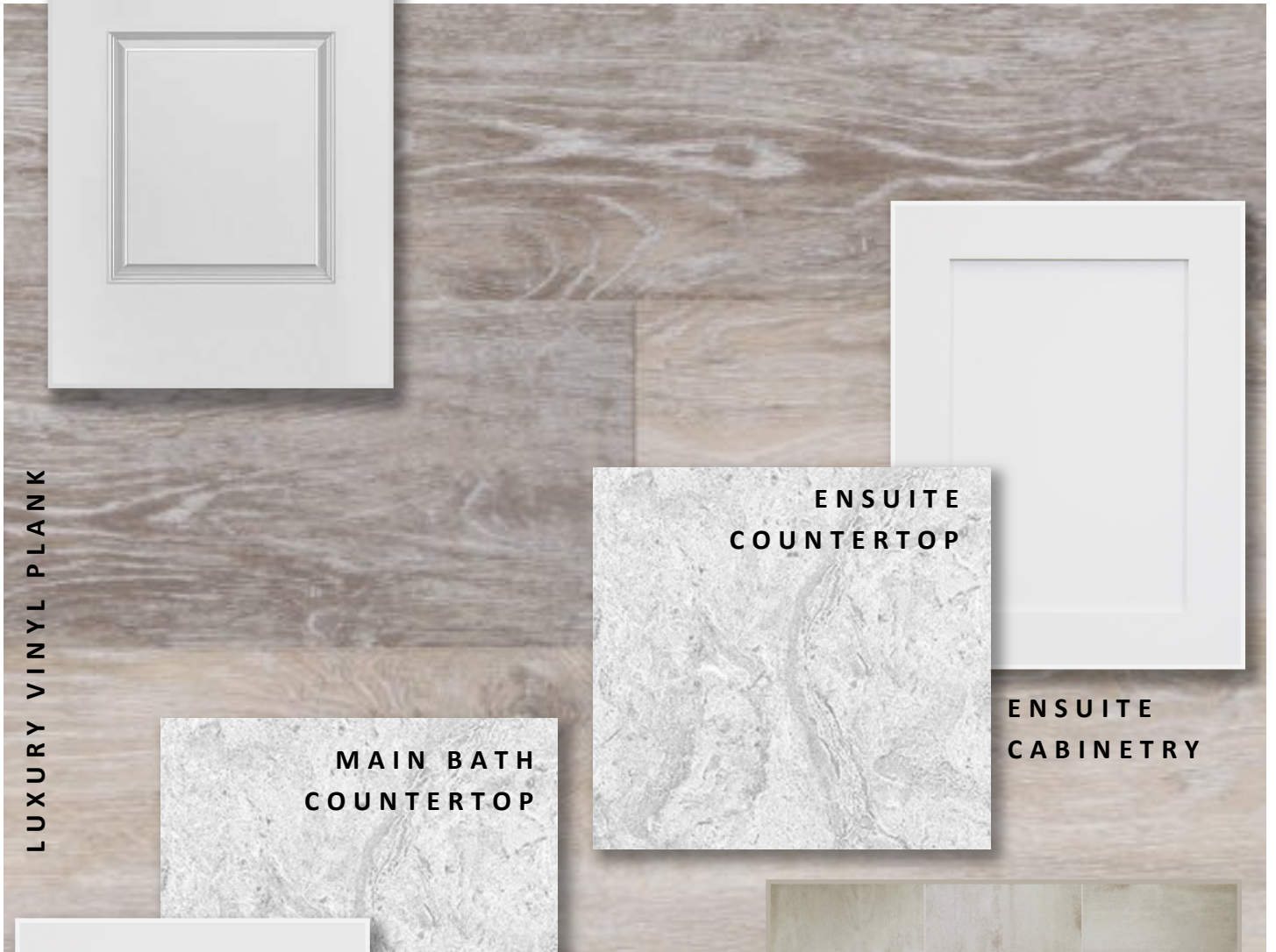
INTERIOR DOOR STYLE



CARPET



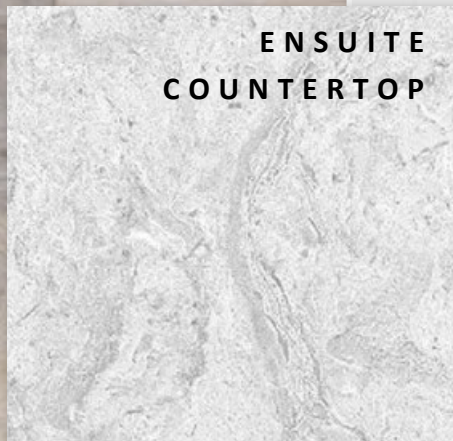
LUXURY VINYL PLANK



MAIN BATH CABINETS



MAIN BATH COUNTERTOP



ENSUITE COUNTERTOP



ENSUITE CABINETS



ENSUITE CUSTOM SHOWER

