

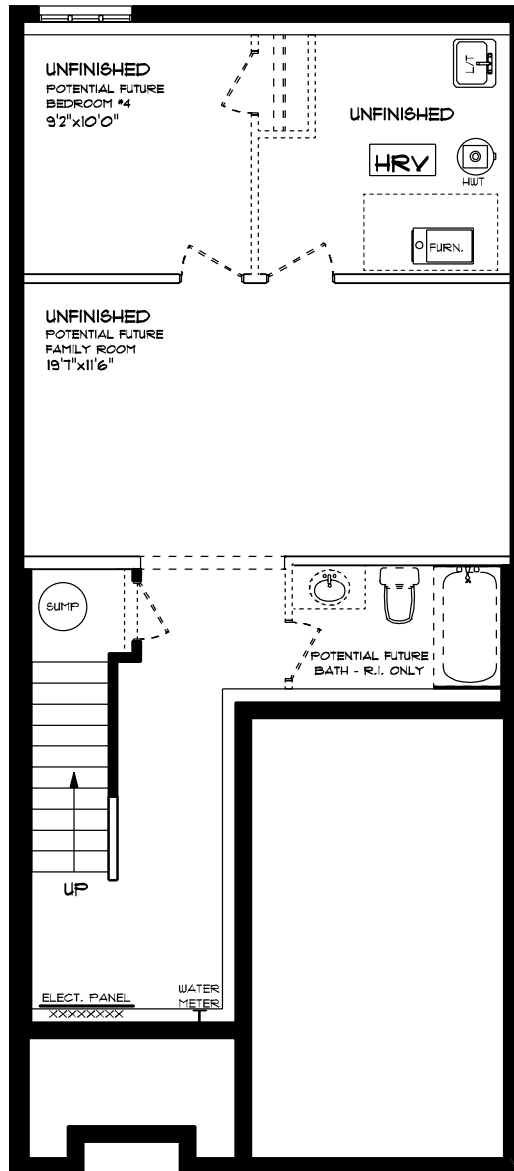


T O W N - 9' MAIN FLOOR CEILING
LOT 39C (#238) RENAISSANCE DRIVE

FRONT ELEVATION
APPROX. 1,615 TOTAL SQ. FT.

This plan is the property of Hagios Homes and any reproduction of this plan, its concepts or ideas, is strictly prohibited. Plans and specifications are approximate and are subject to change without notice. Finished areas and room dimensions will change depending on floor elevator selection.

E. & O.E.

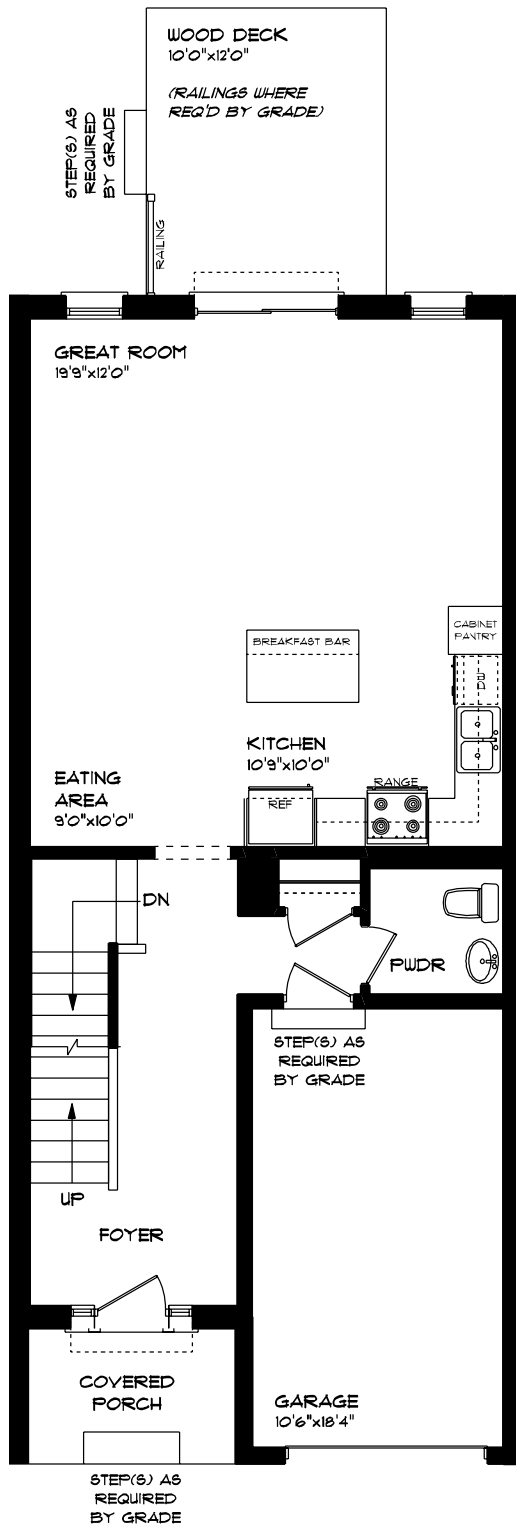


T O W N
 LOT 39C (#238) RENAISSANCE DRIVE

**LOWER LEVEL PLAN
 UNFINISHED**

This plan is the property of Hedges Homes and any reproduction of this plan, its concepts or ideas, is strictly prohibited. Plans and specifications are approximate and are subject to change without notice. Finished area and room dimensions will change depending on final elevation selection.

E. & O.E.

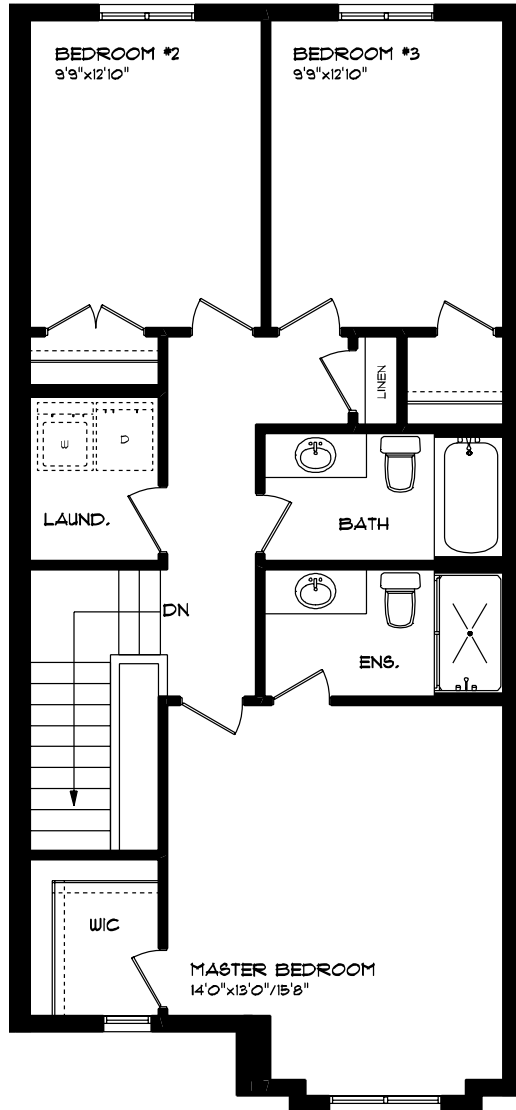


TOWN - 9' MAIN FLOOR CEILING
 LOT 39C (#238) RENAISSANCE DRIVE

MAIN FLOOR PLAN
 APPROX. 155 SQ. FT.

This plan is the property of Hahn Homes and any reproduction of this plan, its concepts or ideas, is strictly prohibited. Plans and specifications are approximate and are subject to change without notice. Finished area and room dimensions will change depending on front elevation selection.

E. & O.E.



T O W N
 LOT 39C (#238) RENAISSANCE DRIVE

SECOND FLOOR PLAN
 APPROX. 860 SQ. FT.

This plan is the property of Hylton Homes and any reproduction of this plan, its concepts or ideas, is strictly prohibited. Plans and specifications are approximate and are subject to change without notice. Finished area and room dimensions will change depending on front elevation selection.

E. & O.E.