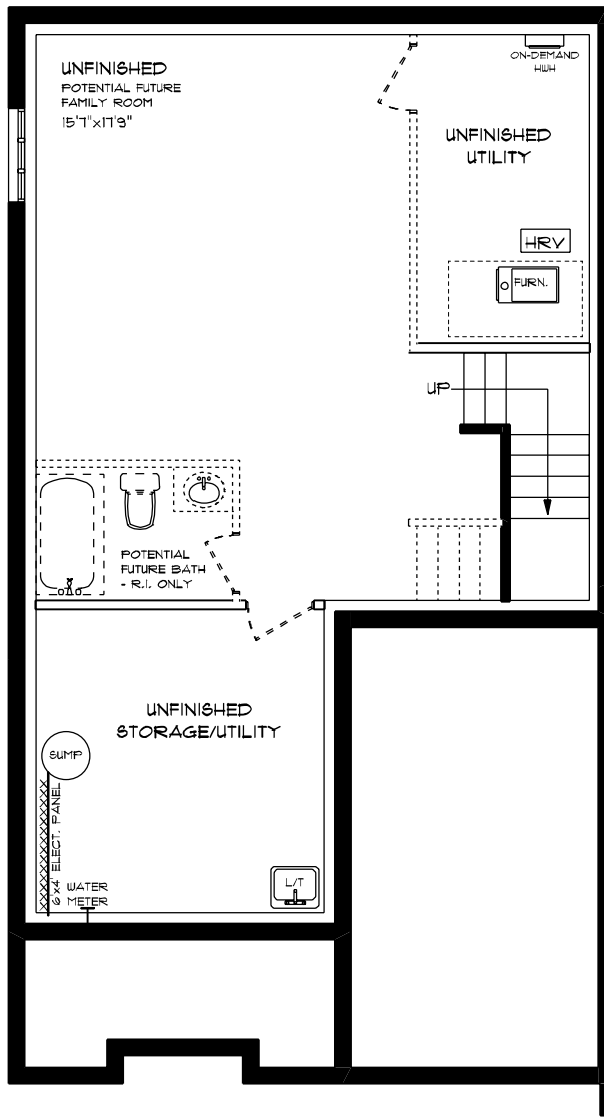




ATMORE (ESSENTIAL SPECS)
LOT 3A (#79) WILLOW DR.
FRONT ELEVATION
9' MAIN FLOOR CEILING
APPROX. 1,178 TOTAL SQ. FT.

This plan is the property of H&H Home Homes and any reproduction of this plan, its concepts or ideas, is strictly prohibited. Plans and specifications are approximate and are subject to change without notice. Finished area and room dimensions will change depending on front elevation selected on E.A.D.E. 2024

CREATED MAR. 2024

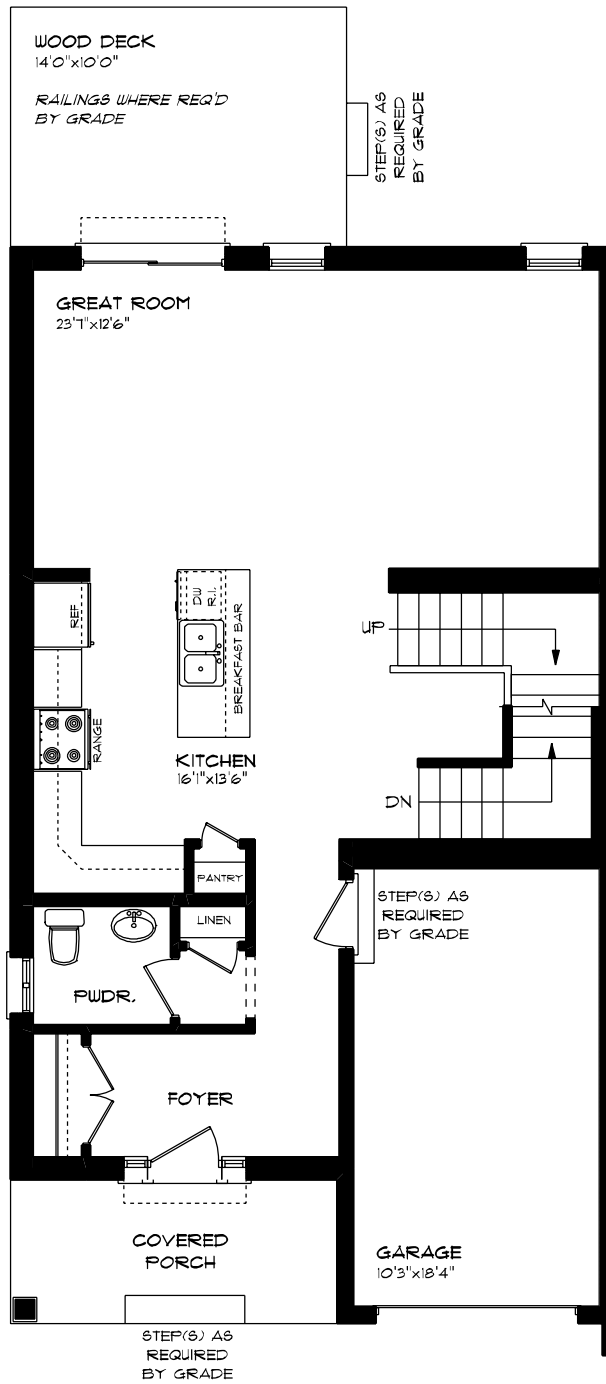


**ATMORE (ESSENTIAL SPECS)
 LOT 3A (#79) WILLOW DR.
 LOWER LEVEL PLAN**

UNFINISHED

This plan is the property of Hayes Homes and any reproduction of this plan, its concepts or ideas, is strictly prohibited. Plans and sizes listed are approximate and are subject to change without notice. Finished area and room dimensions will change depending on front elevation selection. E.A.O.E. 2024

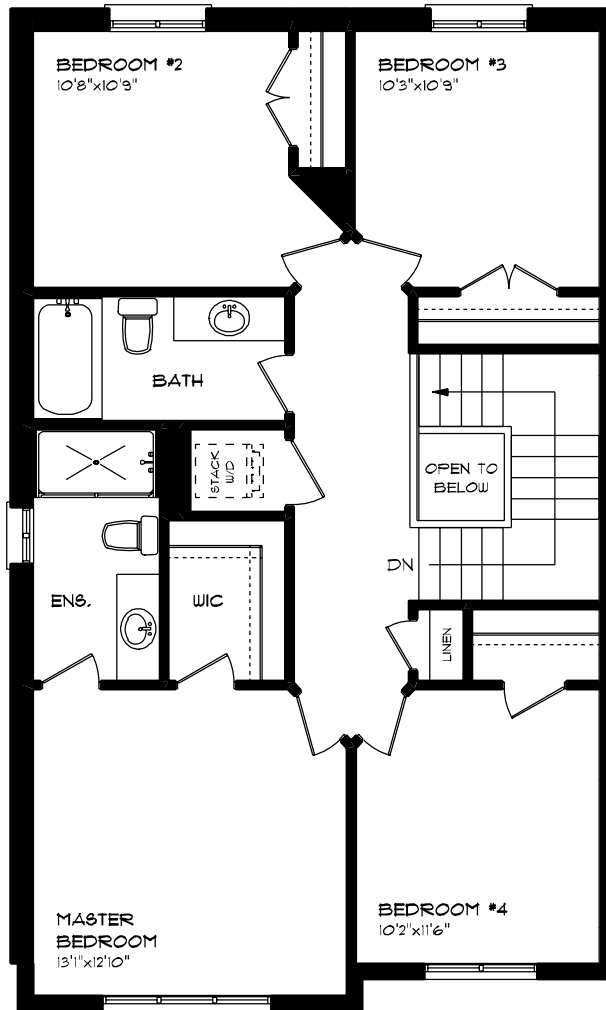
CREATED MAR. 2024



ATMORE (ESSENTIAL SPECS)
LOT 3A (*T9) WILLOW DR.
MAIN FLOOR PLAN
9' MAIN FLOOR CEILING
APPROX. 830 SQ. FT.

This plan is the property of Hayhoe Homes and any reproduction of this plan, its concepts or ideas, is strictly prohibited. Plans and sizes/figures are approximate and are subject to change without notice. Finished area and room dimensions will change depending on front elevation selection. E.A.O.E. 2024

CREATED MAR. 2024



**ATMORE (ESSENTIAL SPECS)
 LOT 3A (*13) WILLOW DR.
 SECOND FLOOR PLAN
 APPROX. 948 SQ. FT.**

This plan is the property of H&H Home Homes and any reproduction of this plan, its concepts or ideas, is strictly prohibited. Plans and specifications are approximate and are subject to change without notice. Finished areas and room dimensions will change depending on front elevation selection. E.A.O.E. 2024
 CREATED 11/18/2024