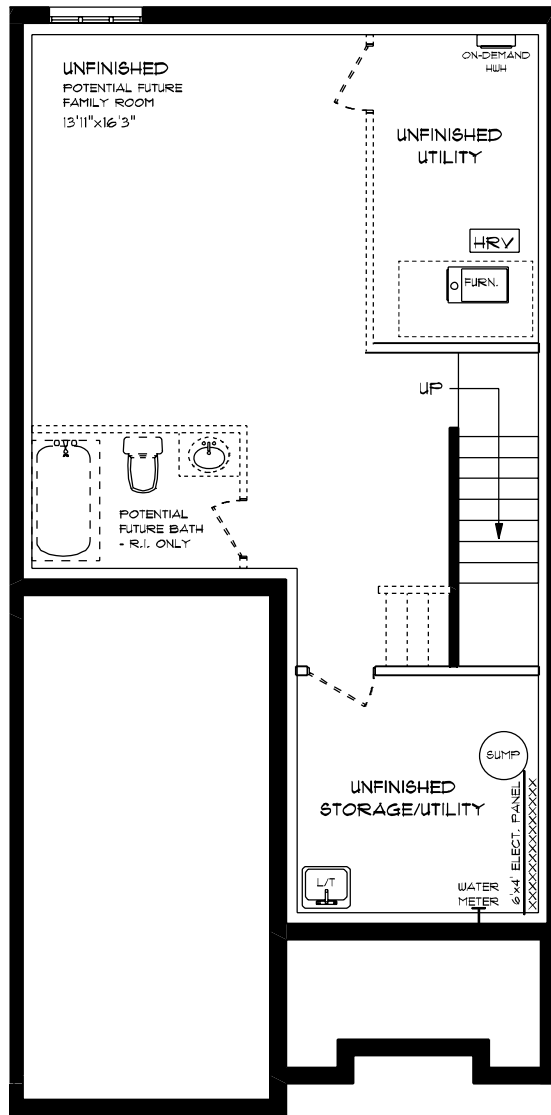




ATMORE (ESSENTIAL SPECS)  
LOT 3B (#11) WILLOW DR.  
FRONT ELEVATION  
9' MAIN FLOOR CEILING  
APPROX. 1,564 TOTAL SQ. FT.

This plan is the property of Highline Homes and any reproduction of this plan, its concepts or ideas, is strictly prohibited. Plans and specifications are approximate and are subject to change without notice. Finished area and room dimensions will change depending on front elevation selection. E.A.O.E. 2024

CREATED MAR, 2024

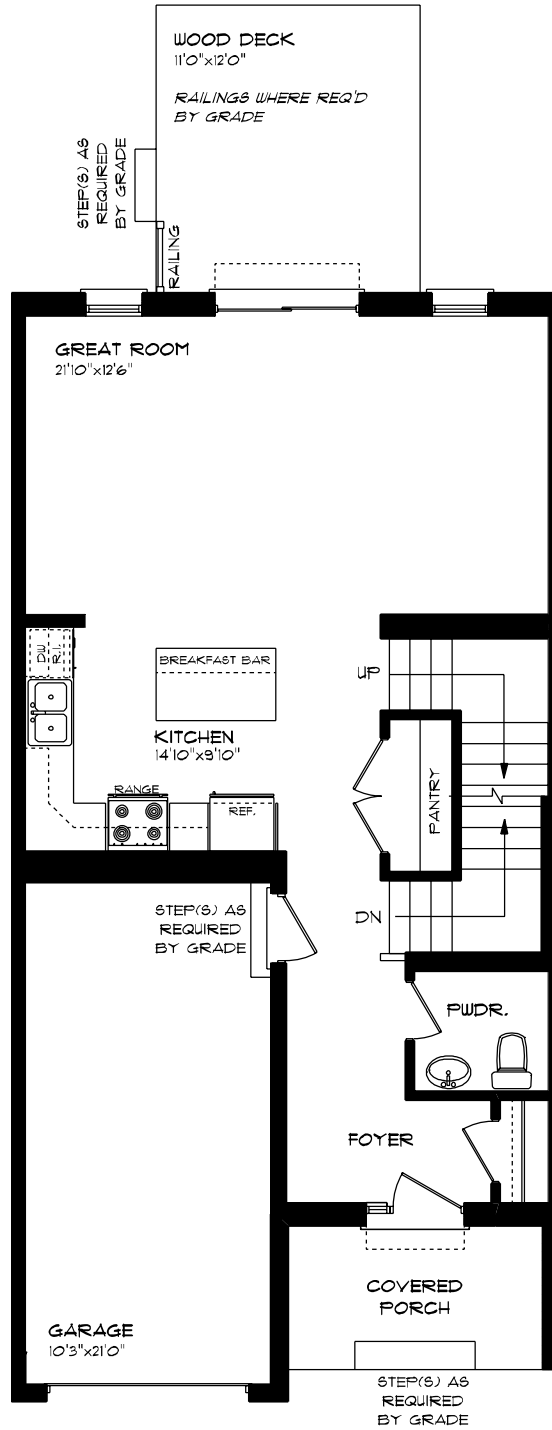


ATMORE (ESSENTIAL SPECS)  
 LOT 3B (\*T1) WILLOW DR.  
 LOWER LEVEL PLAN

UNFINISHED

This plan is the property of Highrise Homes and any reproduction of this plan, its concepts or ideas, is strictly prohibited. All dimensions and areas listed are approximate and are subject to change without notice. Finished areas and room dimensions will change depending on front elevation selection.

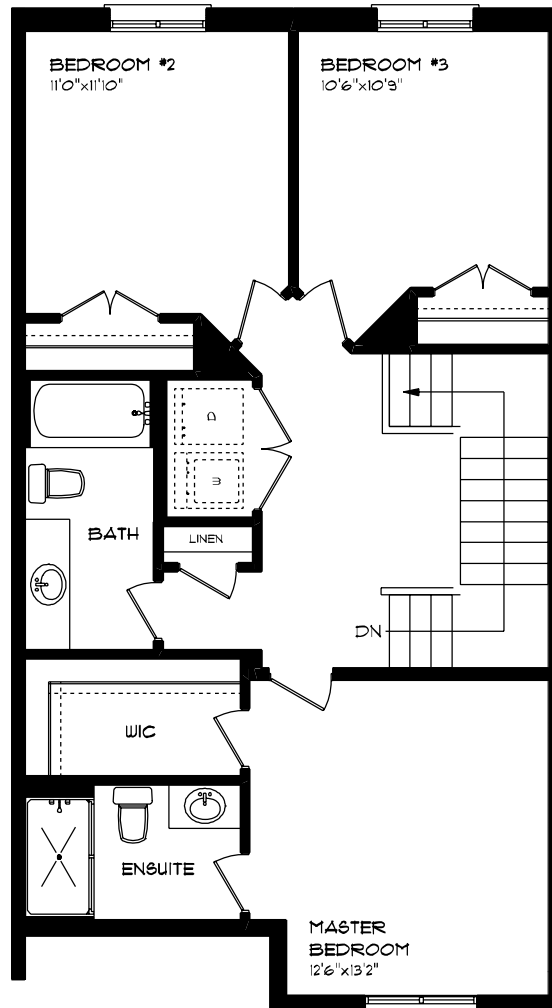
CREATED MAR. 2024



**ATMORE (ESSENTIAL SPECS)**  
**LOT 3B (\*T1) WILLOW DR.**  
**MAIN FLOOR PLAN**  
**9' MAIN FLOOR CEILING**  
**APPROX. 125 SQ. FT.**

This plan is the property of Highrise Homes and any reproduction of this plan, its concepts or ideas, is strictly prohibited. All line and space fluid lines are approximate and are subject to change without notice. Finished area and room dimensions will change depending on front elevation selection. E.A.C.E. 2024

CREATED MAR. 2024



**ATMORE (ESSENTIAL SPECS)  
 LOT 3B (\*77) WILLOW DR.  
 SECOND FLOOR PLAN  
 APPROX. 839 SQ. FT.**

This plan is the property of Highrise Homes and any reproduction of this plan, its concepts or ideas, is strictly prohibited. All lines and specifications are approximate and are subject to change without notice. Finished area and room dimensions will change depending on final elevation selection.  
 CREATED MAR. 2024