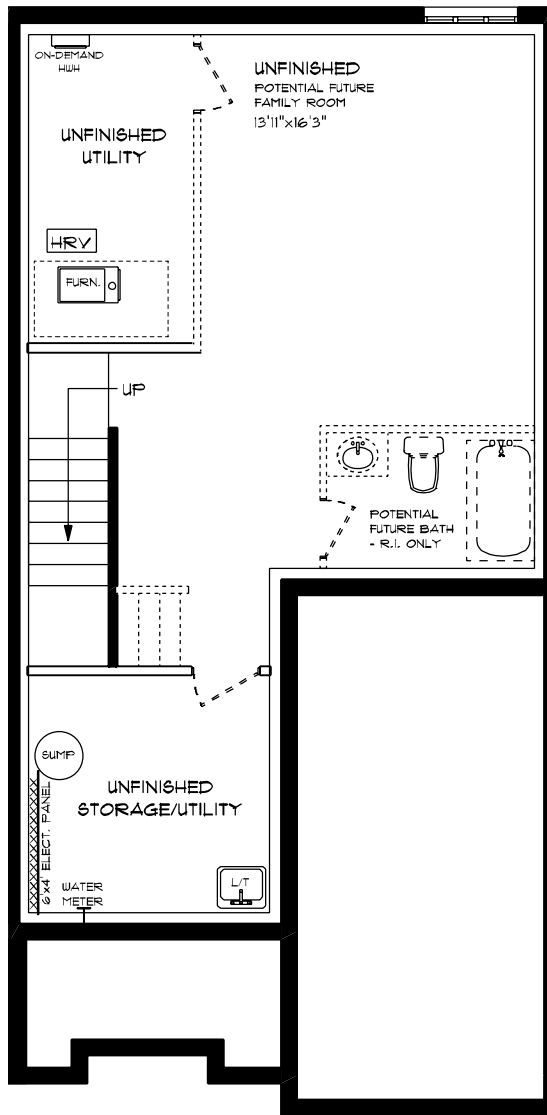




ATMORE (ESSENTIAL SPECS)  
LOT 3C (\*75) WILLOW DR.  
FRONT ELEVATION  
9' MAIN FLOOR CEILING  
APPROX. 1,548 TOTAL SQ. FT.

This plan is the property of H&H Homes and any reproduction of this plan, its concepts or ideas, is strictly prohibited. Plans and specifications are approximate and are subject to change without notice. Finished area and room dimensions will change depending on front elevation selection. E.A.D.E. 2024

CREATED MAR. 2024

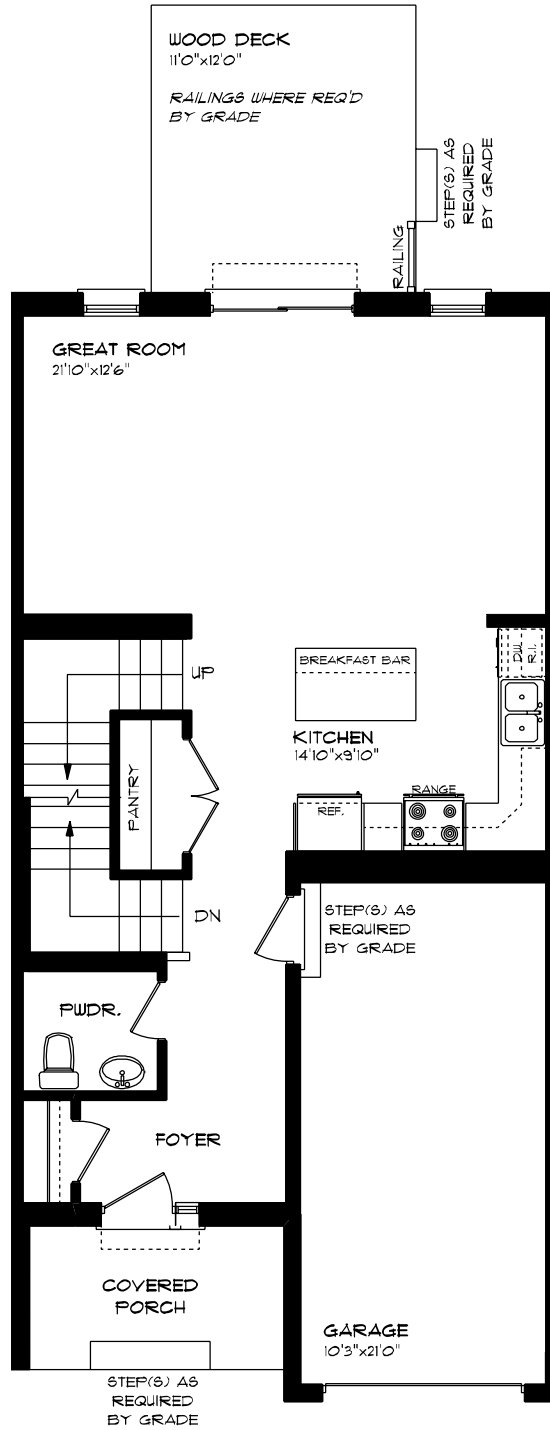


ATMORE (ESSENTIAL SPECS)  
 LOT 3C (#15) WILLOW DR.  
 LOWER LEVEL PLAN

UNFINISHED

This plan is the property of Mayhew Homes and any reproduction of this plan, its concepts or ideas, is strictly prohibited. Plans and specifications are approximate and are subject to change without notice. Finished area and room dimensions will change depending on front elevation selection.

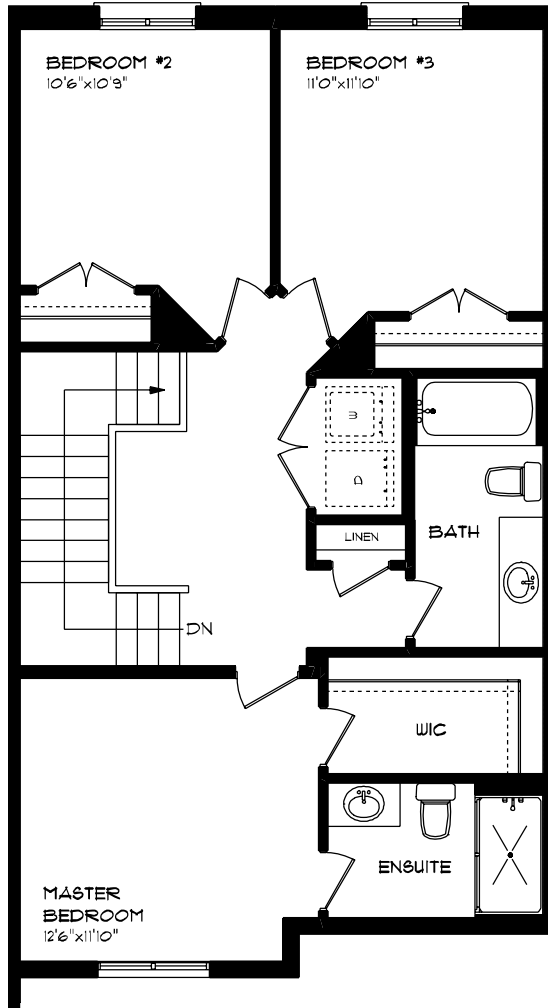
CREATED MAR, 2024



**ATMORE (ESSENTIAL SPECS)**  
**LOT 3C (#15) WILLOW DR.**  
**MAIN FLOOR PLAN**  
**9' MAIN FLOOR CEILING**  
**APPROX. 725 SQ. FT.**

This plan is the property of Hayes Homes and any reproduction of this plan, its concepts or ideas, is strictly prohibited. Plans and specifications are approximate and are subject to change without notice. Finished area and room dimensions will change depending on front elevation selection. E.A.O.E. 2024

CREATED MAR, 2024



**ATMORE (ESSENTIAL SPECS)**  
**LOT 3C (\*15) WILLOW DR.**  
**SECOND FLOOR PLAN**  
**APPROX. 823 SQ. FT.**

This plan is the property of MaJore Homes and any reproduction of this plan, its concepts or ideas, is strictly prohibited. Plans and specifications are approximate and are subject to change without notice. Finished area and room dimensions will change depending on front elevation selection.

CREATED \*14R, 2024