

# WILLOW RUN

69 WILLOW DRIVE

AYLMER | ONTARIO

TOWNHOME



## THE DETAILS

PRICE	\$529,000
CLOSING DATE	May 2, 2025
LOT NUMBER	3F
BEDROOMS	4
BATHS	2.5
GARAGE	1
DRIVEWAY	17'
SQ FT	1,778
MODEL	Townhome

**Emma Smith** SALES PROFESSIONAL

519.409.1474 | emma.smith@hayhoehomes.com



# WILLOW RUN

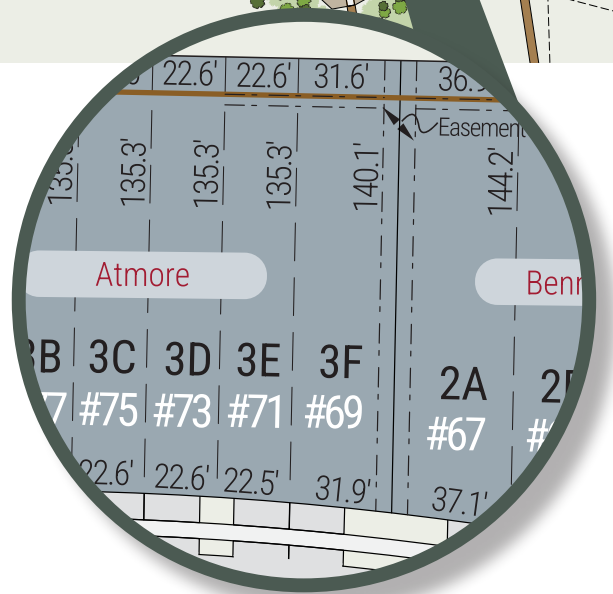
## SITE PLAN

69 WILLOW DRIVE | AYLMER ON



### exterior features

- KEYLESS ENTRY
- TREATED WOOD DECK
- ASPHALT DRIVEWAY
- WALKING TRAILS



# WILLOW RUN

69 WILLOW DRIVE

## MAIN FLOOR

830 sq ft

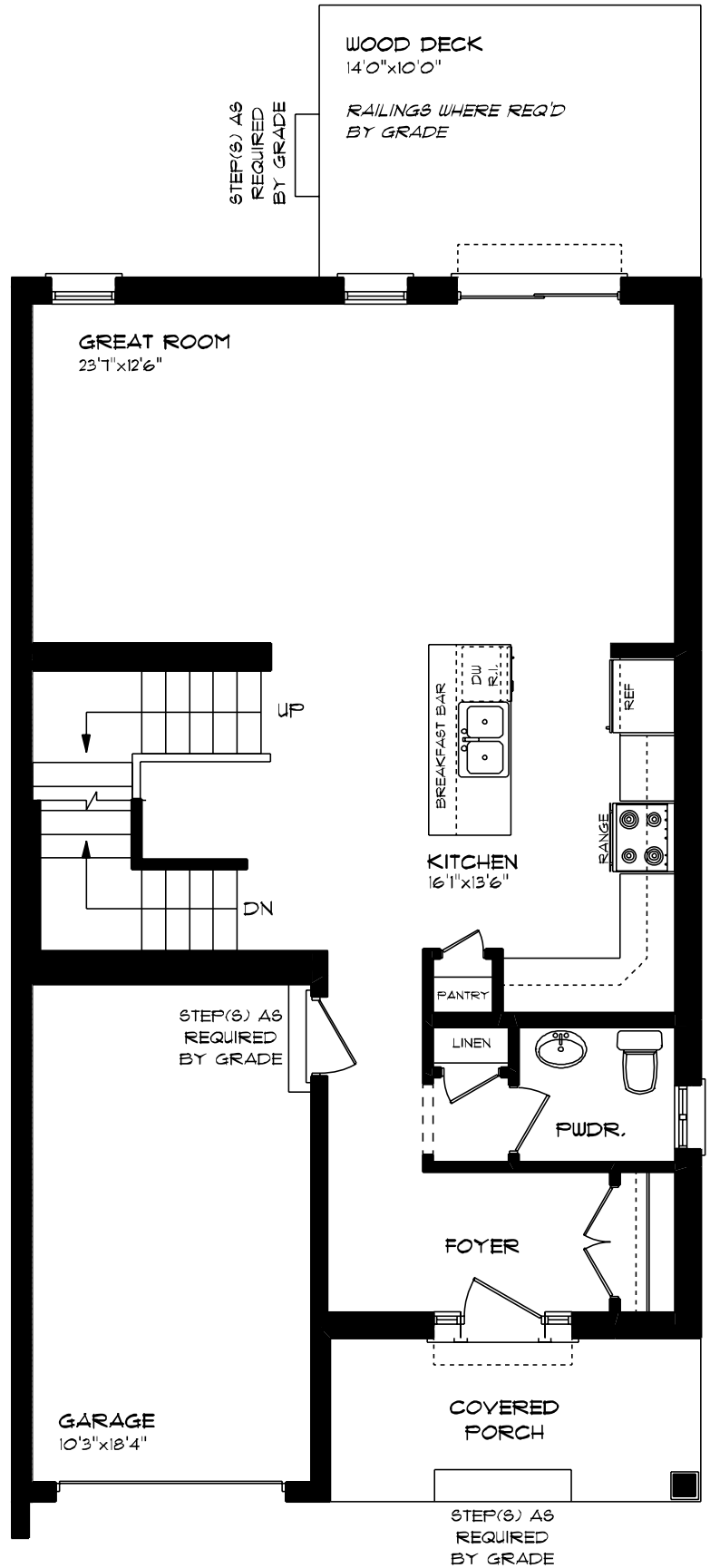
### features

QUARTZ COUNTERTOPS

VINYL PLANK FLOORING

KITCHEN ISLAND

9' CEILINGS



# WILLOW RUN

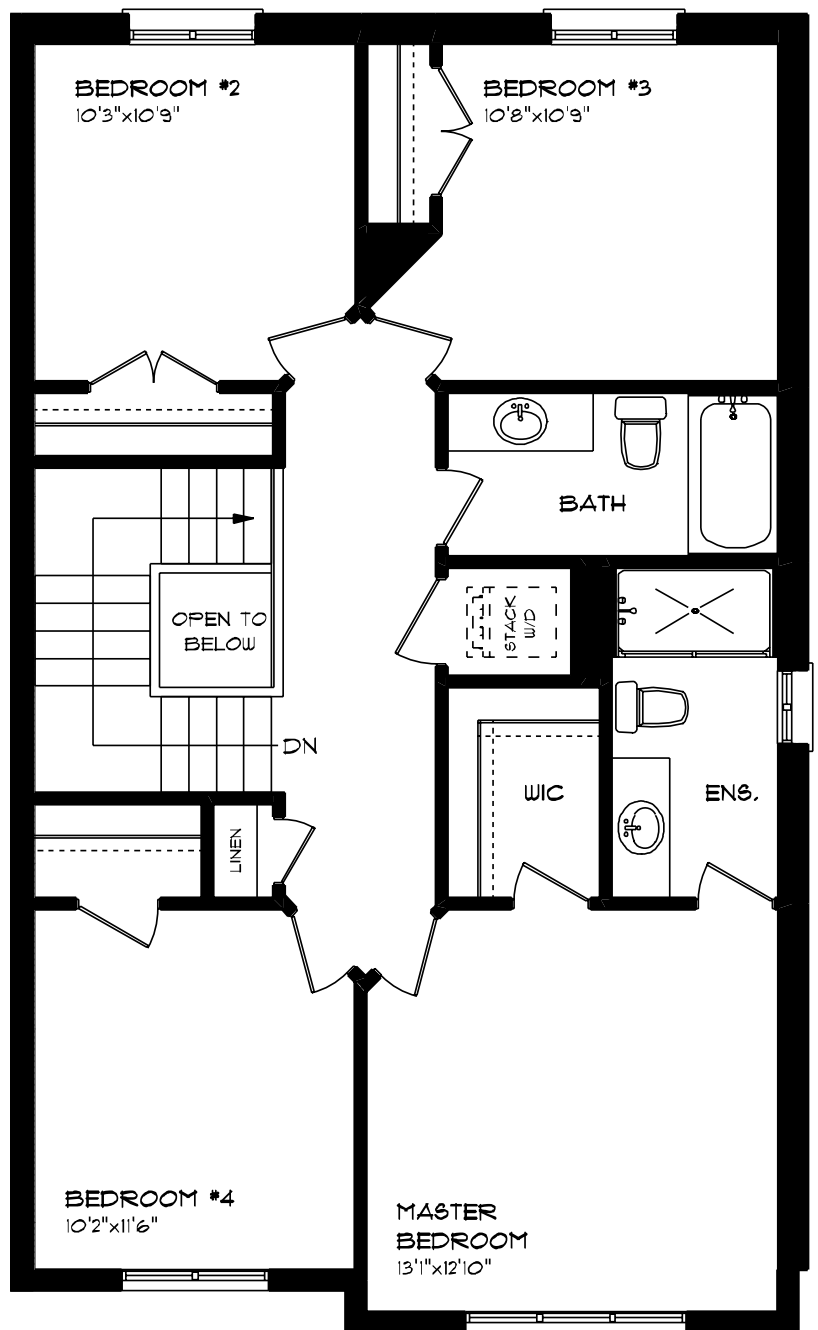
69 WILLOW DRIVE

## SECOND FLOOR

948 sq ft

### *features*

- PROFESSIONALLY DESIGNED
- CARPET FLOORING
- VINYL PLANK FLOORING
- WALK-IN CLOSET



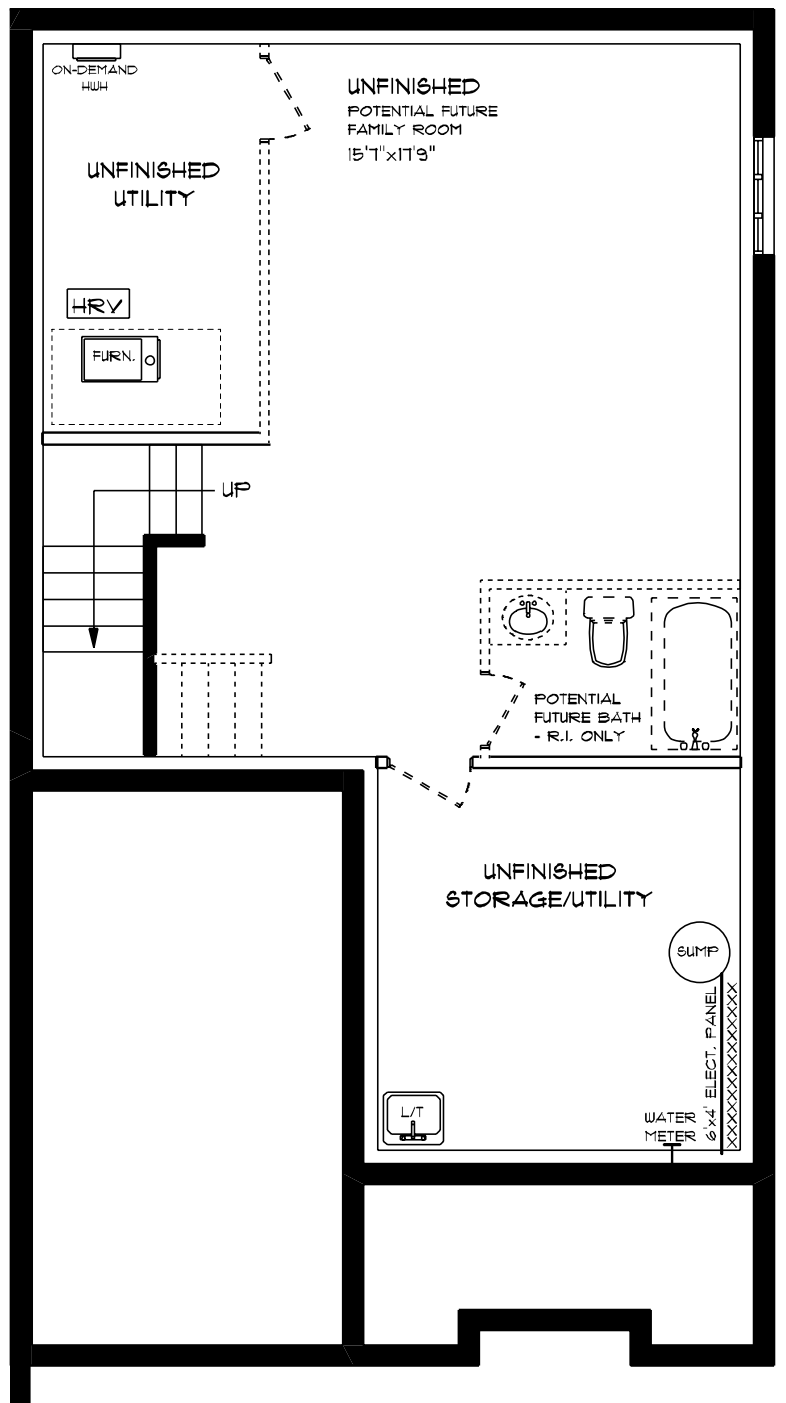
# WILLOW RUN

69 WILLOW DRIVE

## LOWER LEVEL UNFINISHED

### *features*

- AIR CONDITIONING
- GAS FURNACE WITH HRV
- HUMIDIFIER
- NEW HOME WARRANTY



# WILLOW RUN

69 WILLOW DRIVE

## INTERIOR FINISHES

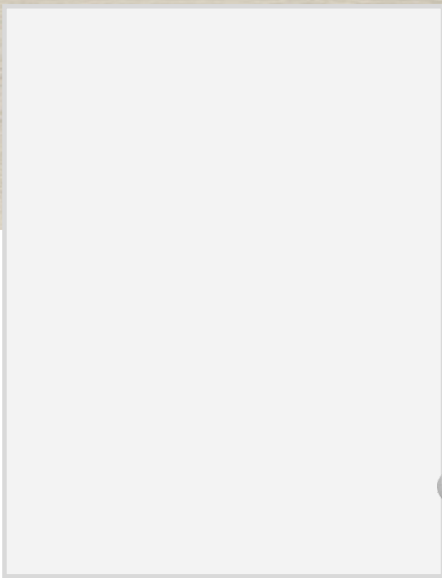


QUARTZ KITCHEN COUNTERTOPS

LUXURY VINYL PLANK



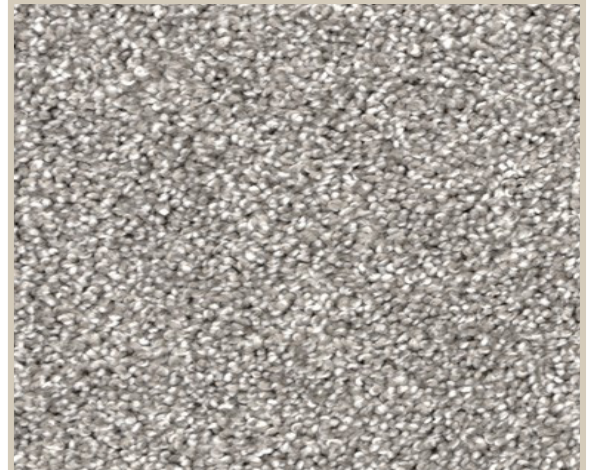
MELAMINE KITCHEN CABINETS



MELAMINE VANITY CABINETS



LAMINATE VANITY COUNTERTOPS



CARPET