

INVENTORY HOME

BASEMENT SUITE



244 RENAISSANCE DRIVE

ORCHARD PARK MEADOWS, ST. THOMAS

THE DETAILS

PRICE	\$ 729,000
CLOSING DATE	AVAILABLE NOW
LOT NUMBER	40
BEDROOMS	4
BATHS	3
SQFT	2488
GARAGE	2
MODEL	GLENMORE

HAYHOE™
— HOMES —



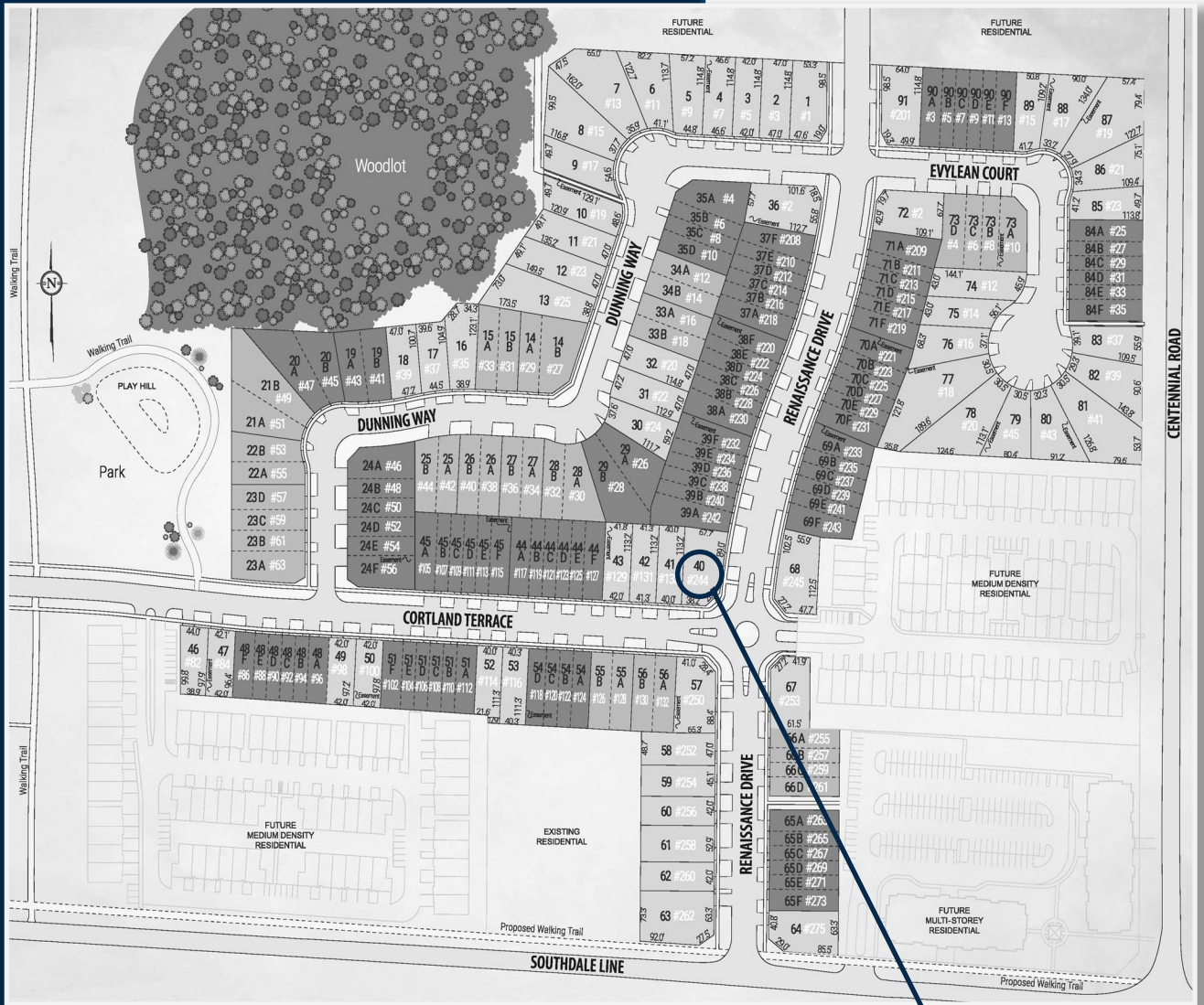
SALES PROFESSIONAL

DAVE MATTHEWS

519.633.9215

dave.matthews@hayhoehomes.com

SITE PLAN

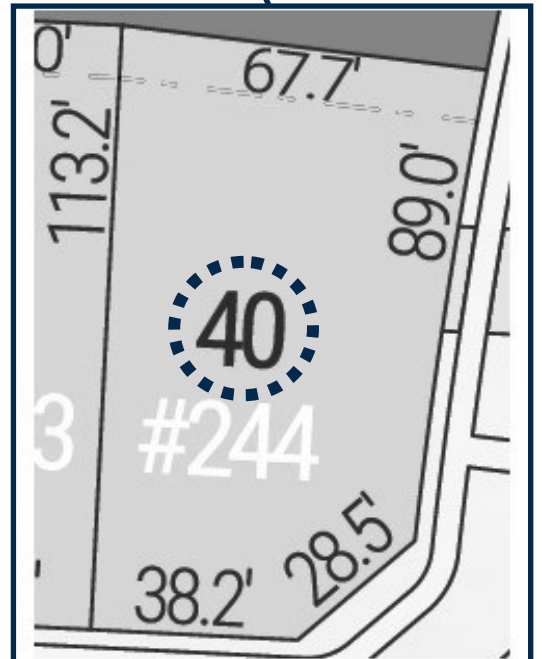


244 RENAISSANCE

EXTERIOR FEATURES:

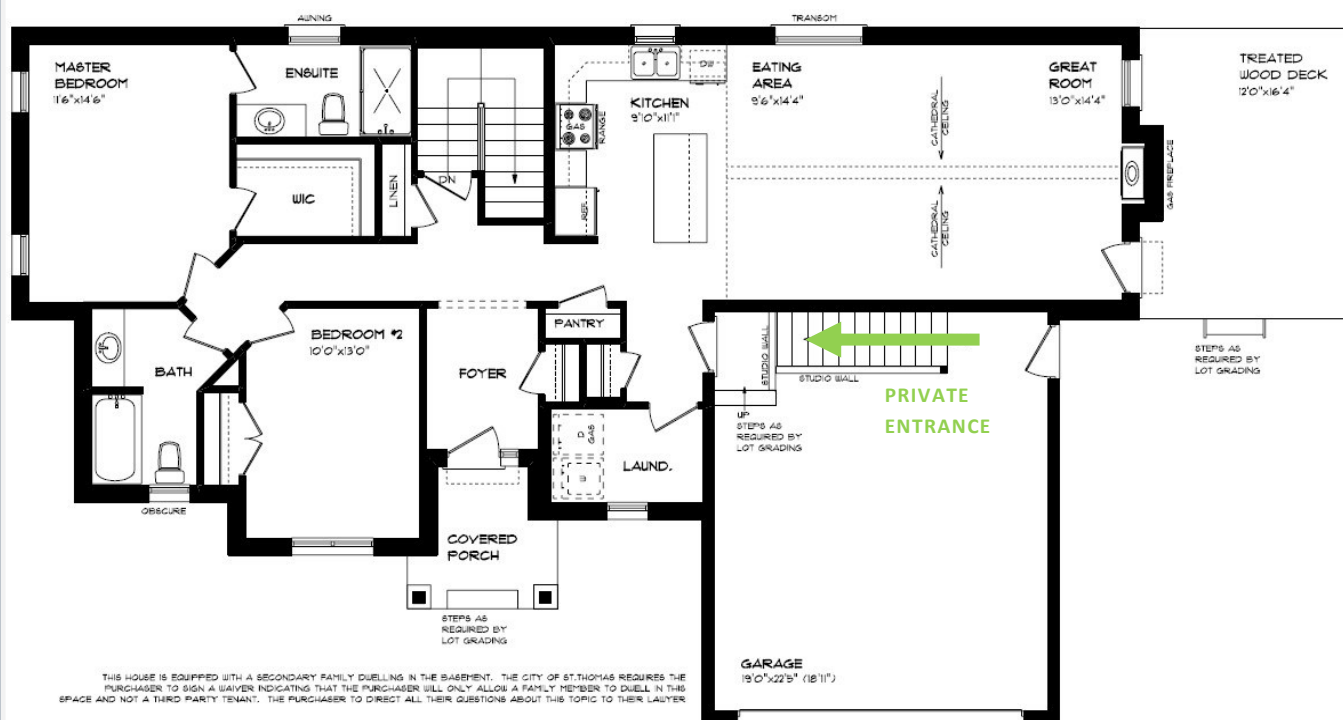
- KEYLESS ENTRY
- TREATED WOOD DECK
- BBQ GAS LINE
- ASPHALT DRIVEWAY
- WALKING TRAILS

HAYHOE™
HOMES



MAIN FLOOR

244 RENAISSANCE,
ST. THOMAS



BASEMENT SUITE

LUXURY VINYL PLANK FLOORING

GAS FIREPLACE

CATHEDRAL CEILING

CUSTOM CABINETRY

MAIN FLOOR LAUNDRY

WALK-IN CLOSET

STAIRS FROM GARAGE DOWN

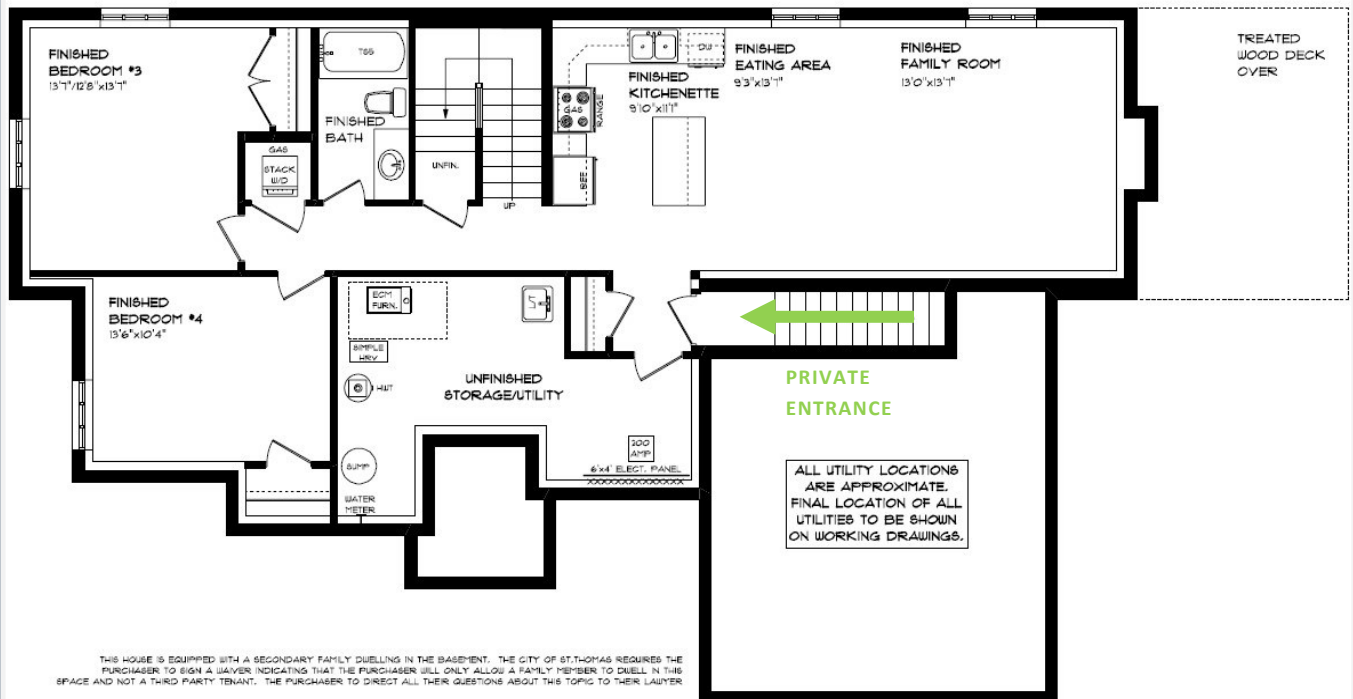
HAYHOE™
— HOMES —

MAIN FLOOR:

APPROX 1444 SQFT

BASEMENT

244 RENAISSANCE,
ST. THOMAS



BASEMENT SUITE

LUXURY VINYL PLANK FLOORING

KITCHENETTE

SECONDARY LAUNDRY

STAIRS FROM GARAGE DOWN

AIR CONDITIONING

GAS FURNACE WITH HRV

HUMIDIFIER

BASEMENT:

APPROX 1044 SQFT

HAYHOETM
HOMES

EXTERIOR FINISHES

SHINGLES



244 RENAISSANCE



SIDING



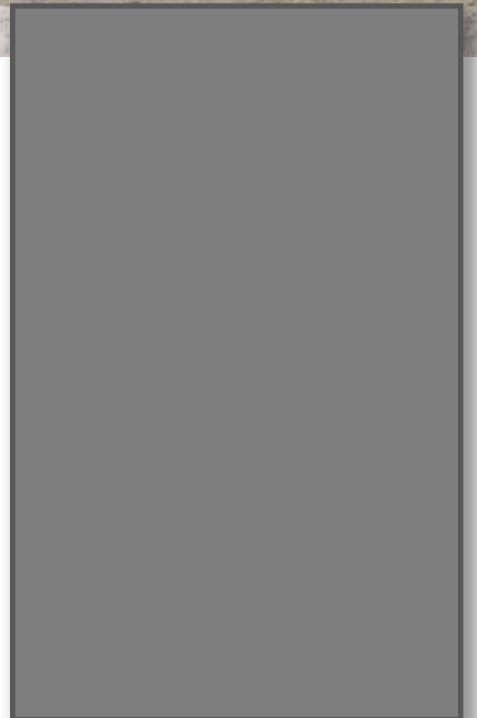
FRONT
DOOR

BRICK



WINDOWS

GARAGE DOOR



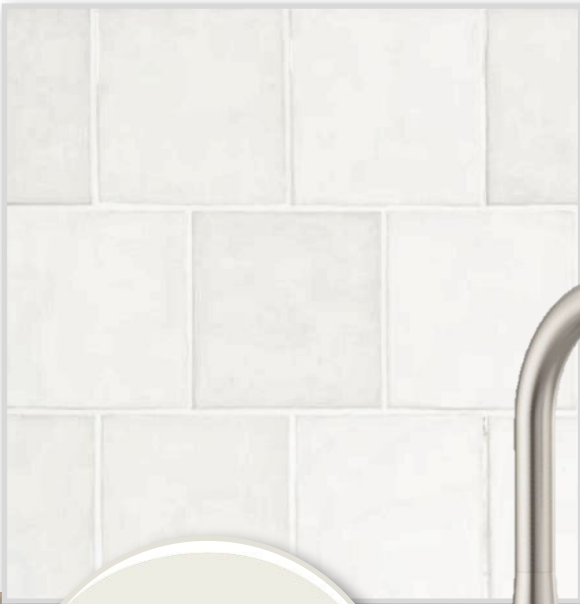
ALUMINUM

HAYHOE™
— HOMES —

INTERIOR FINISHES

244 RENAISSANCE

KITCHEN BACKSPLASH



KITCHEN COUNTERTOPS

PAIN
T COLOUR



KITCHEN ACCENTS
& MANTEL STAIN



VINYL
PLANK



ENSUITE &
MAIN BATH
VANITY

ENSUITE &
MAIN BATH
COUNTERTOPS

HAYHOE™
HOMES

KITCHEN
CABINETS

PRICE, PRODUCTS, COLOURS & FEATURES ARE SUBJECT TO CHANGE WITHOUT NOTICE.
COLOURS SHOWN MAY VARY FROM INSTALLED MATERIALS. E & O.E

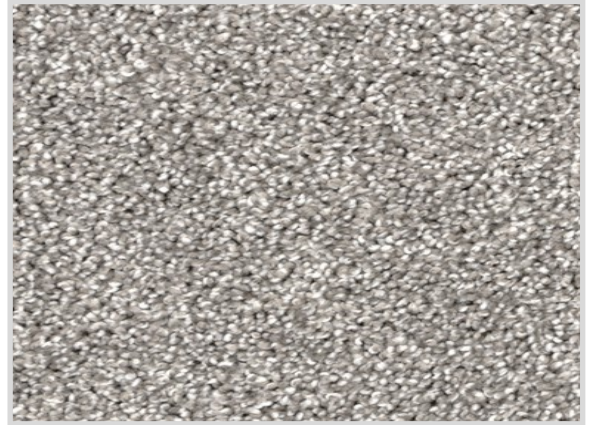
CREATED MAY 21, 2024

INTERIOR FINISHES

INTERIOR DOOR STYLE

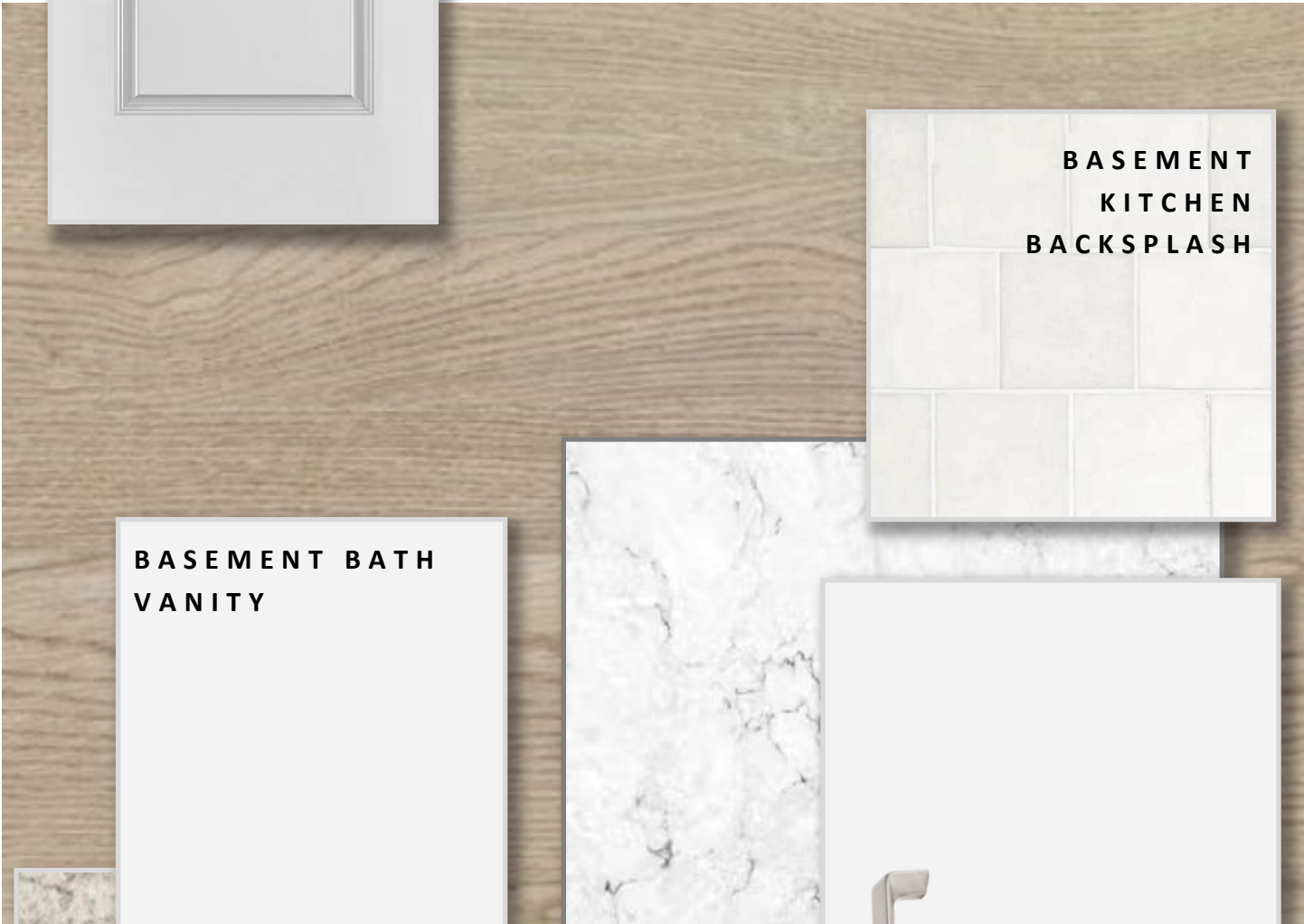


244 RENAISSANCE



CARPET STAIRS

VINYL PLANK



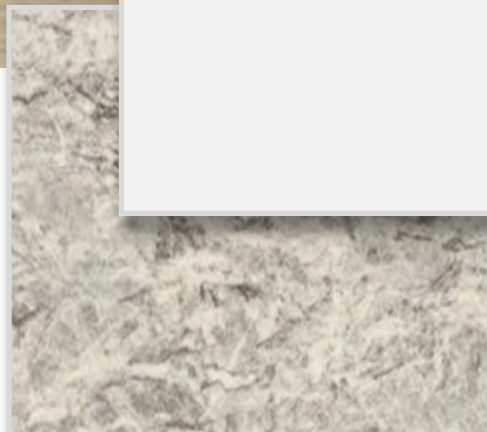
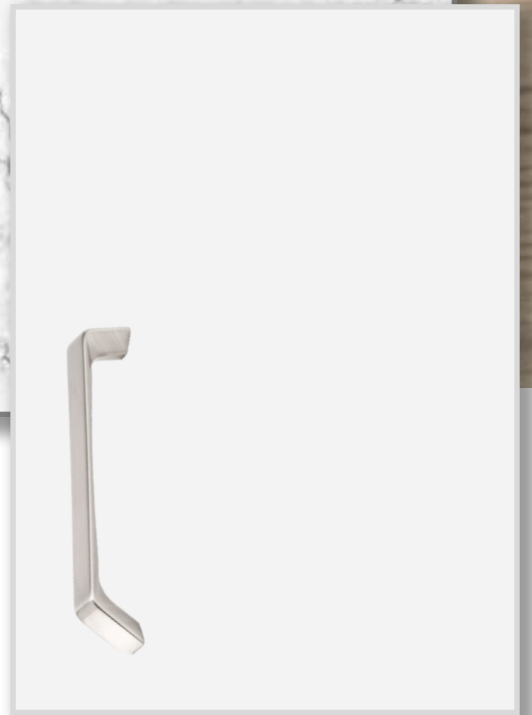
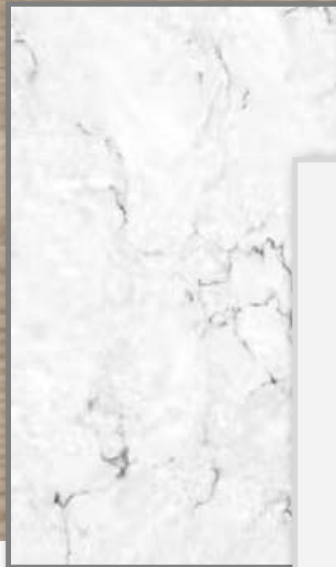
BASEMENT
KITCHEN
BACKSPLASH



BASEMENT BATH
VANITY



BASEMENT
KITCHEN
COUNTERTOP



BASEMENT BATH
COUNTERTOP

HAYHOE™
—HOMES—

BASEMENT
KITCHEN
CABINTRY