

# LYNHURST *Heights*



2 COLUMBUS CT ST. THOMAS | ON

## THE DETAILS

PRICE	\$625,000
CLOSING DATE	Sep. 8, 2025
LOT NUMBER	43A
BEDROOMS	3
BATHS	2.5
GARAGE	1
DRIVEWAY	17'
SQ FT	1,770
MODEL	Semi-Detached

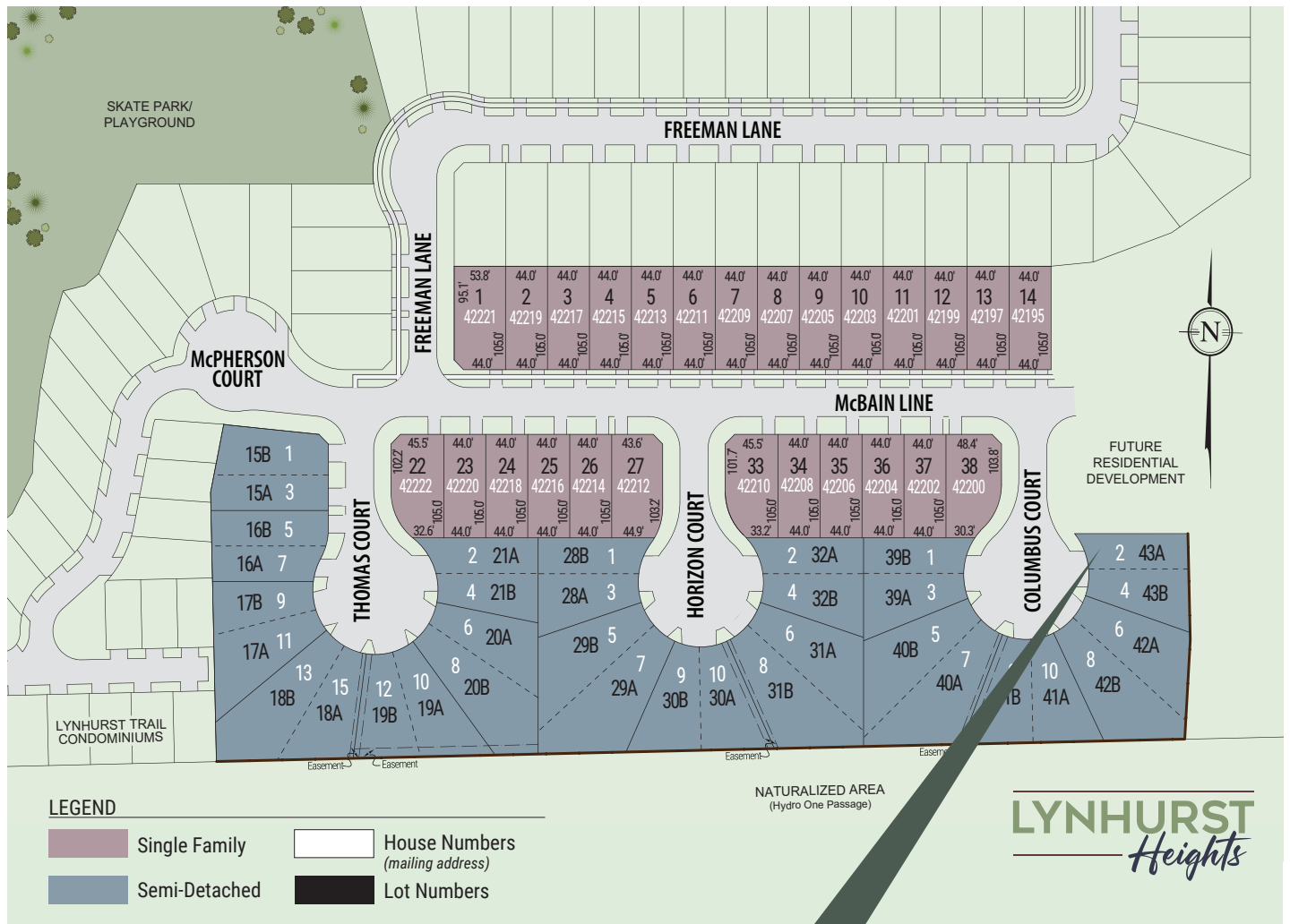
Dave Matthews SALES PROFESSIONAL  
519.633.9215 | dave.matthews@hayhoehomes.com



# LYNHURST *Heights*

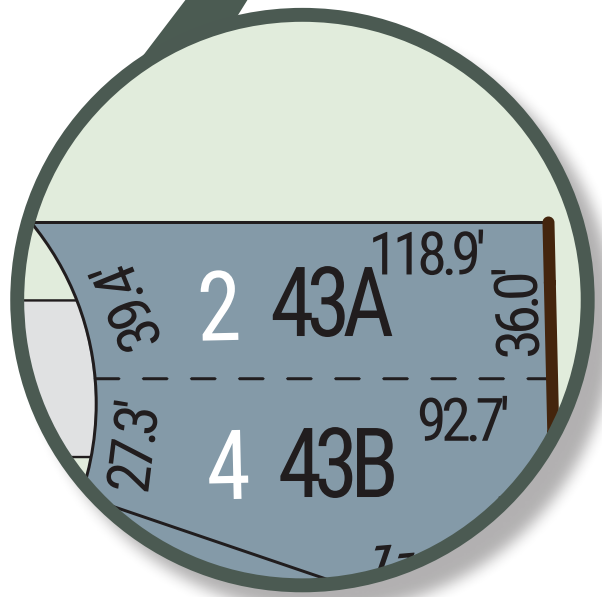
## SITE PLAN

2 Columbus Court | ST. THOMAS | ONTARIO



### *exterior features*

- KEYLESS ENTRY
- TREATED WOOD DECK
- ASPHALT DRIVEWAY
- WALKING TRAILS



# LYNHURST *Heights*

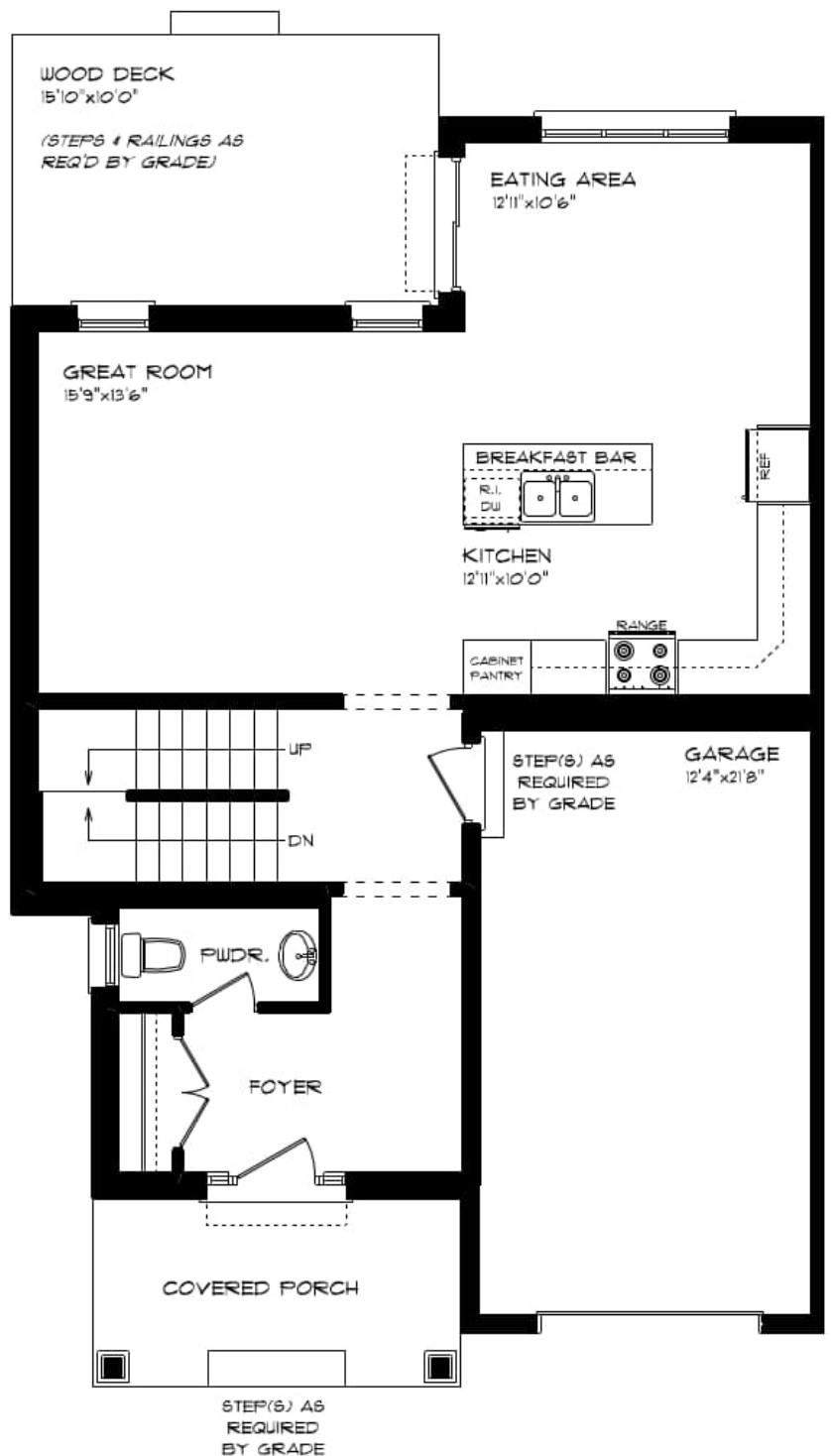
2 Columbus Court | ST. THOMAS | ONTARIO

## MAIN FLOOR

838 sq ft

### *features*

- QUARTZ COUNTERTOPS
- UNDERMOUNT SINK
- KITCHEN BACKSPLASH
- KITCHEN ISLAND
- LUXURY VINYL FLOORING
- SINGLE CAR GARAGE
- PROFESSIONALLY DESIGNED



# LYNHURST *Heights*

2 Columbus Court | ST. THOMAS | ONTARIO

## SECOND FLOOR

932 sq ft

### *features*

PROFESSIONALLY DESIGNED

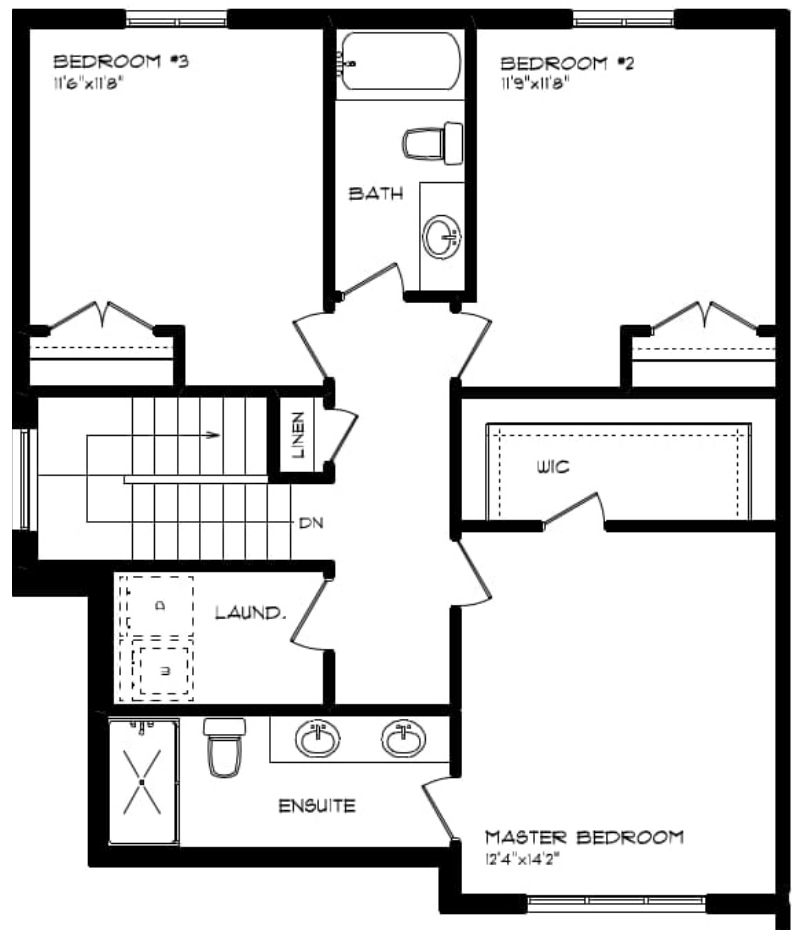
CARPET FLOORING

LUXURY VINYL PLANK FLOORING

WALK-IN CLOSET

SECOND FLOOR LAUNDRY

DOUBLE ENSUITE VANITY



# LYNHURST *Heights*

2 Columbus Court | ST. THOMAS | ONTARIO

## LOWER LEVEL UNFINISHED

### *features*

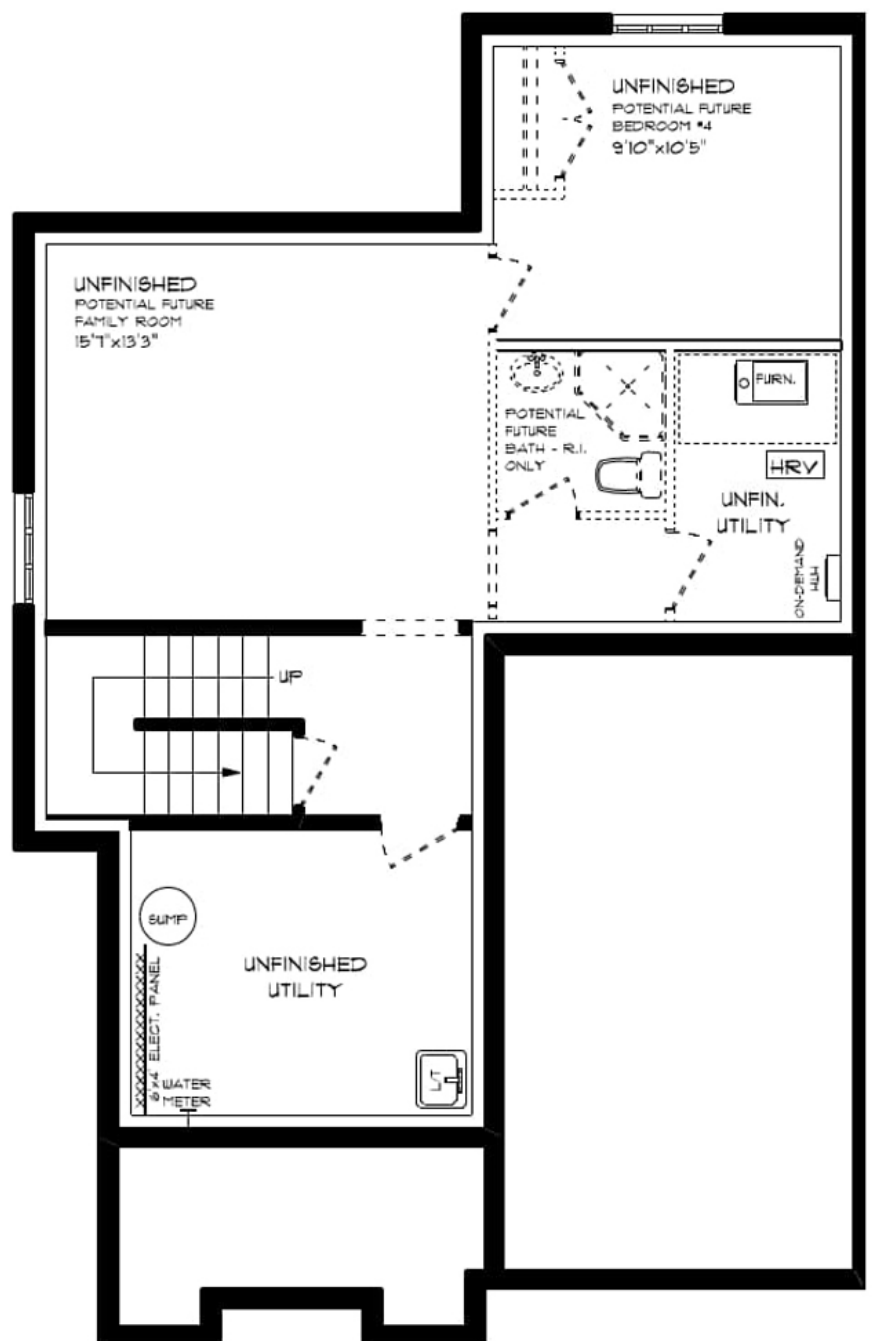
AIR CONDITIONING

GAS FURNACE WITH HRV

HUMIDIFIER

NEW HOME WARRANTY

TANKLESS HWH



# LYNHURST *Heights*

## INTERIOR FINISHES

2 Columbus Court | ST. THOMAS | ONTARIO



PAINTED KITCHEN CABINETS



KITCHEN BACKSPLASH



UPPERS, TALLS, AND ISLAND

PERIMETER LOWERS



WALL COLOUR

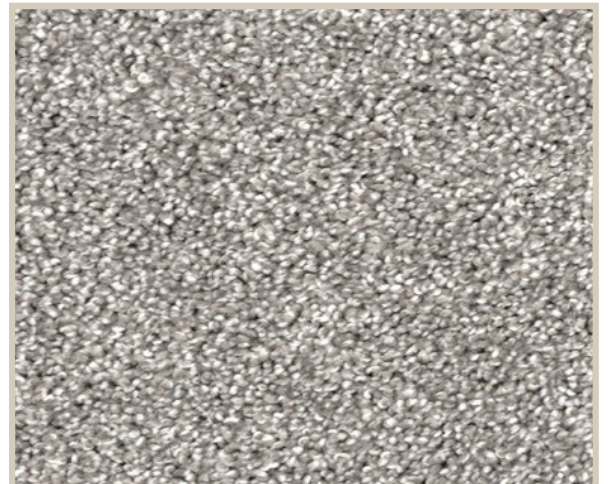
QUARTZ KITCHEN COUNTERTOPS



PAINTED VANITY CABINETS



LAMINATE VANITY COUNTERTOPS



CARPET