

WILLOW RUN

16 HEMLOCK CRESCENT

AYLMER | ONTARIO

SEMI-DETACHED



THE DETAILS

| | |
|--------------|---------------|
| PRICE | \$599,000 |
| CLOSING DATE | May 23, 2025 |
| LOT NUMBER | 43B |
| BEDROOMS | 4 |
| BATHS | 2.5 |
| GARAGE | 1 |
| DRIVEWAY | 17' |
| SQ FT | 1,921 |
| MODEL | Semi-Detached |

Emma Smith SALES PROFESSIONAL

519.409.1474 | emma.smith@hayhoehomes.com



WILLOW RUN

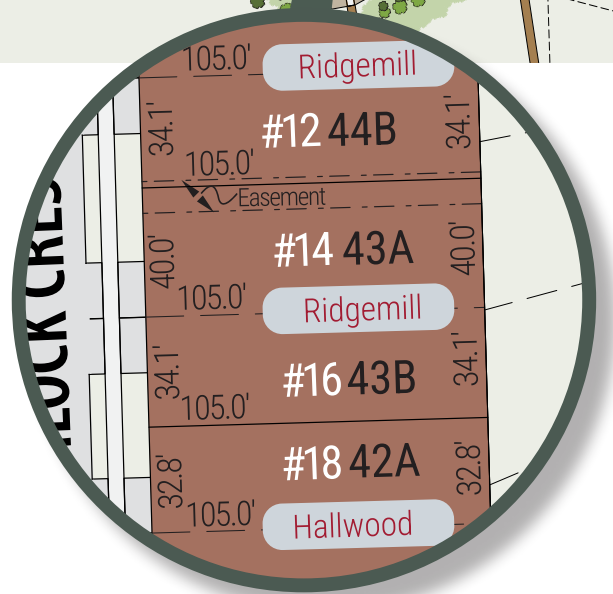
SITE PLAN

16 HEMLOCK CRESCENT | AYLMER ON



exterior features

- KEYLESS ENTRY
- TREATED WOOD DECK
- ASPHALT DRIVEWAY
- WALKING TRAILS



WILLOW RUN

16 HEMLOCK CRESCENT

MAIN FLOOR

873 sq ft

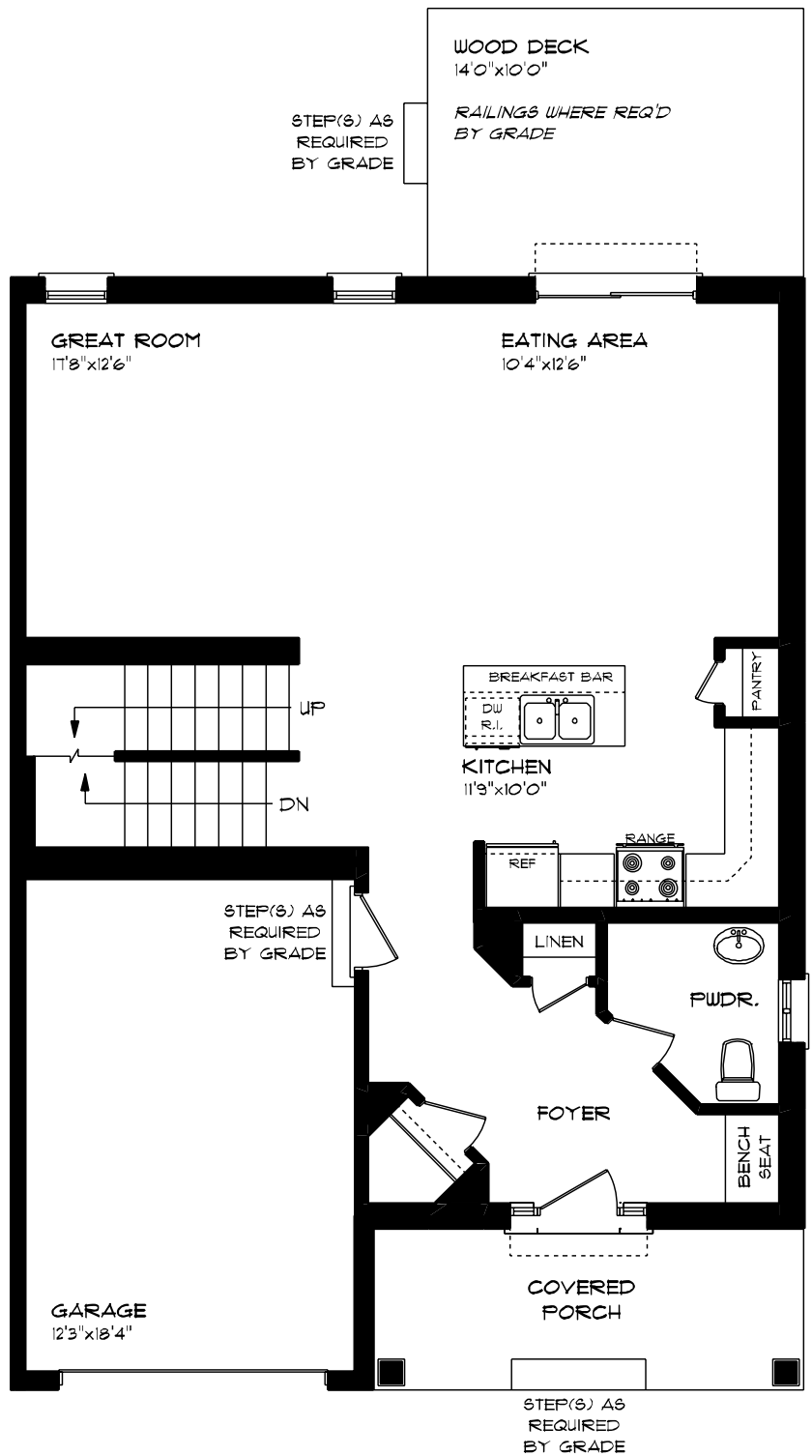
features

QUARTZ COUNTERTOPS

VINYL PLANK FLOORING

KITCHEN ISLAND

9' CEILINGS



WILLOW RUN

16 HEMLOCK CRESCENT

SECOND FLOOR

1,048 sq ft

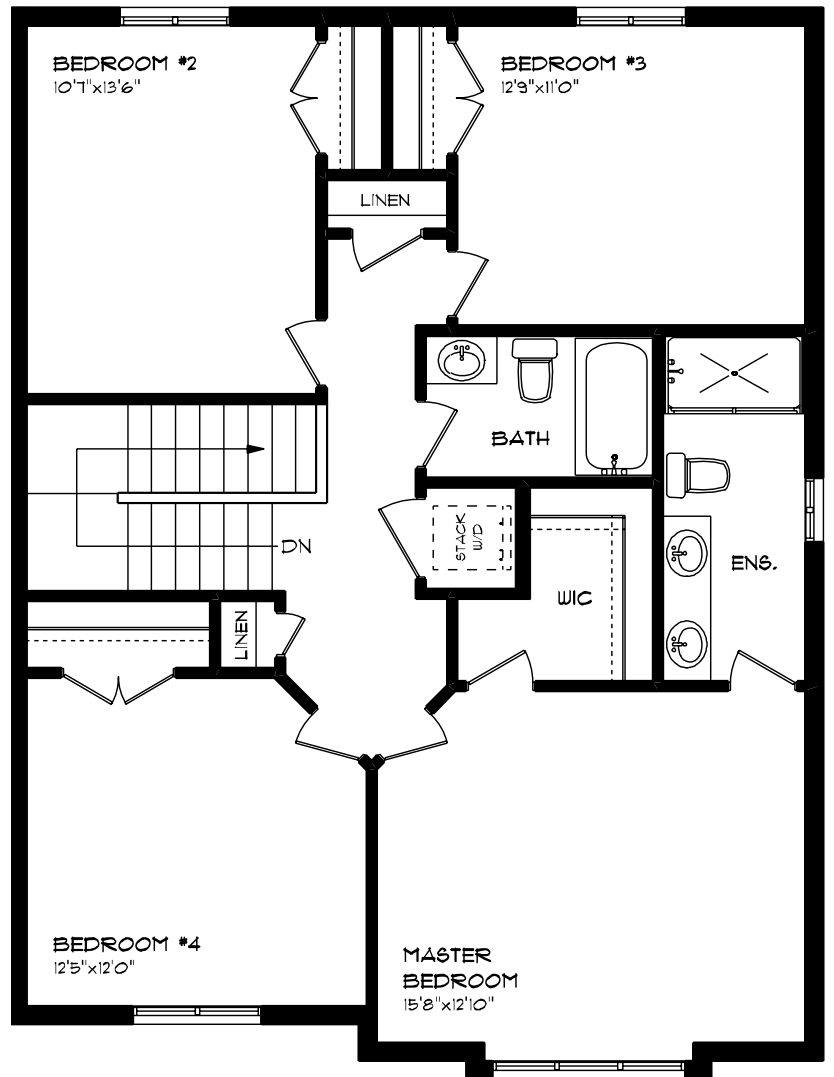
features

PROFESSIONALLY DESIGNED

CARPET FLOORING

VINYL PLANK FLOORING

WALK-IN CLOSET



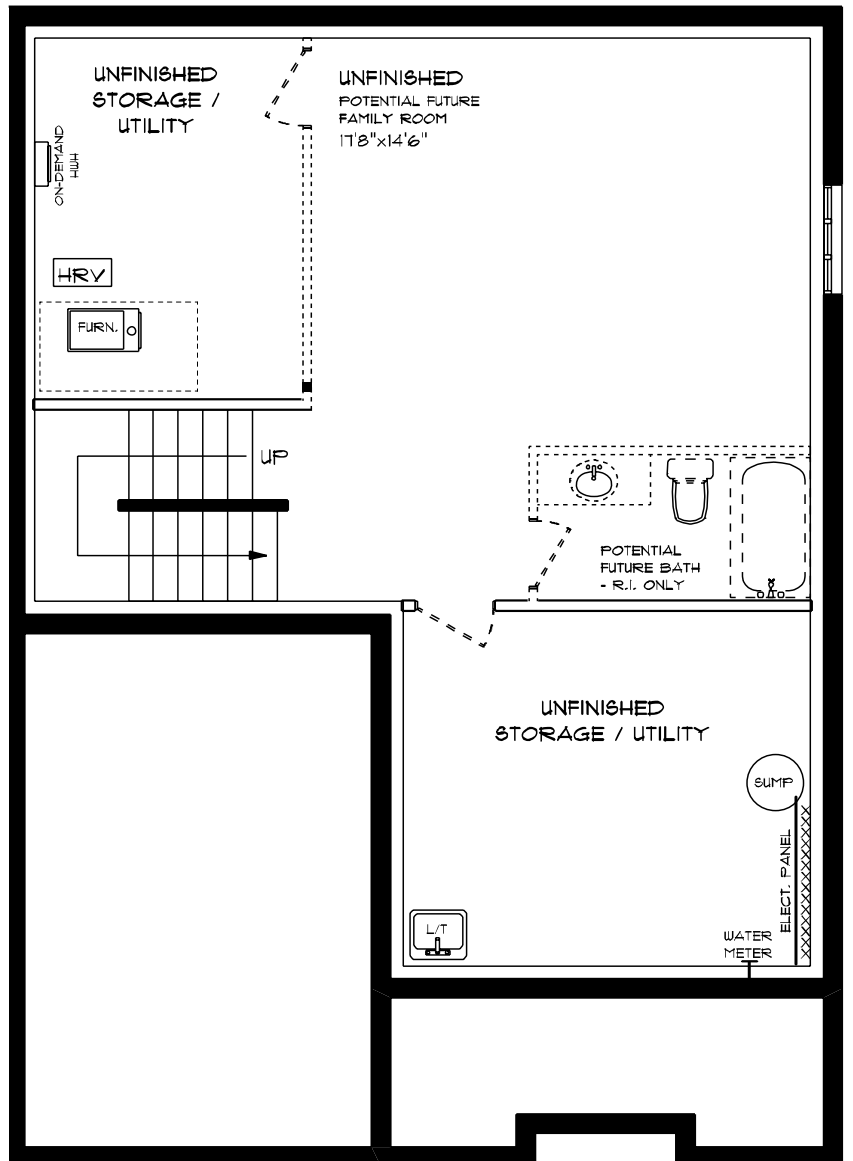
WILLOW RUN

16 HEMLOCK CRESCENT

LOWER LEVEL UNFINISHED

features

- AIR CONDITIONING
- GAS FURNACE WITH HRV
- HUMIDIFIER
- NEW HOME WARRANTY



WILLOW RUN

16 HEMLOCK CRESCENT

INTERIOR FINISHES

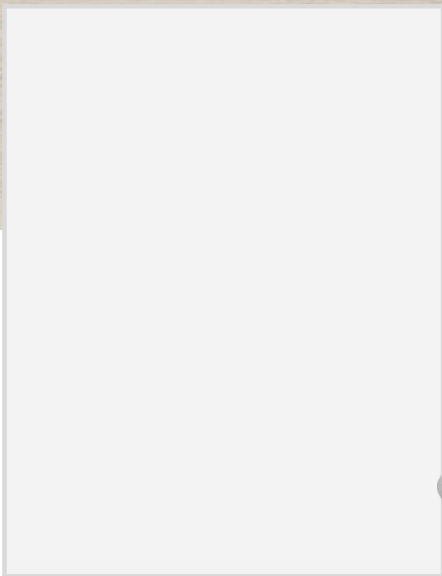


QUARTZ KITCHEN COUNTERTOPS

LUXURY VINYL PLANK



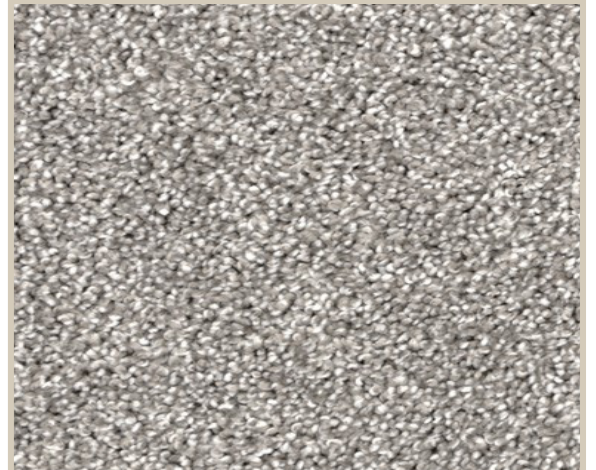
MELAMINE KITCHEN CABINETS



MELAMINE VANITY CABINETS



LAMINATE VANITY COUNTERTOPS



CARPET