

WILLOW RUN

10 HEMLOCK CRESCENT

AYLMER | ONTARIO

SEMI-DETACHED



THE DETAILS

PRICE	\$599,000
CLOSING DATE	April 23, 2025
LOT NUMBER	44A
BEDROOMS	4
BATHS	2.5
GARAGE	1
DRIVEWAY	17'
SQ FT	1,921
MODEL	Semi-Detached

Emma Smith SALES PROFESSIONAL

519.409.1474 | emma.smith@hayhoehomes.com



WWW.HAYHOEHOMES.COM

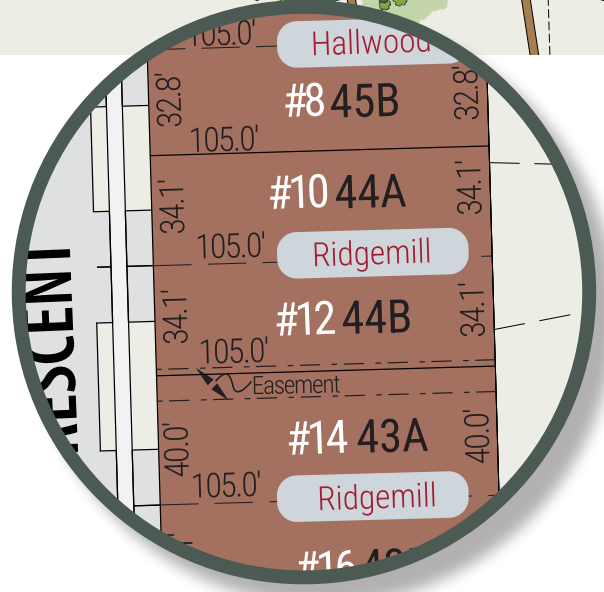
Price, products, colours & features are subject to change without notice. E. & O. E. AUGUST 29, 2024

HAYHOETM
HOMES

WILLOW RUN

SITE PLAN

10 HEMLOCK CRESCENT | AYLMER ON



exterior features

- KEYLESS ENTRY
- TREATED WOOD DECK
- ASPHALT DRIVEWAY
- WALKING TRAILS

WILLOW RUN

10 HEMLOCK CRESCENT

MAIN FLOOR

873 sq ft

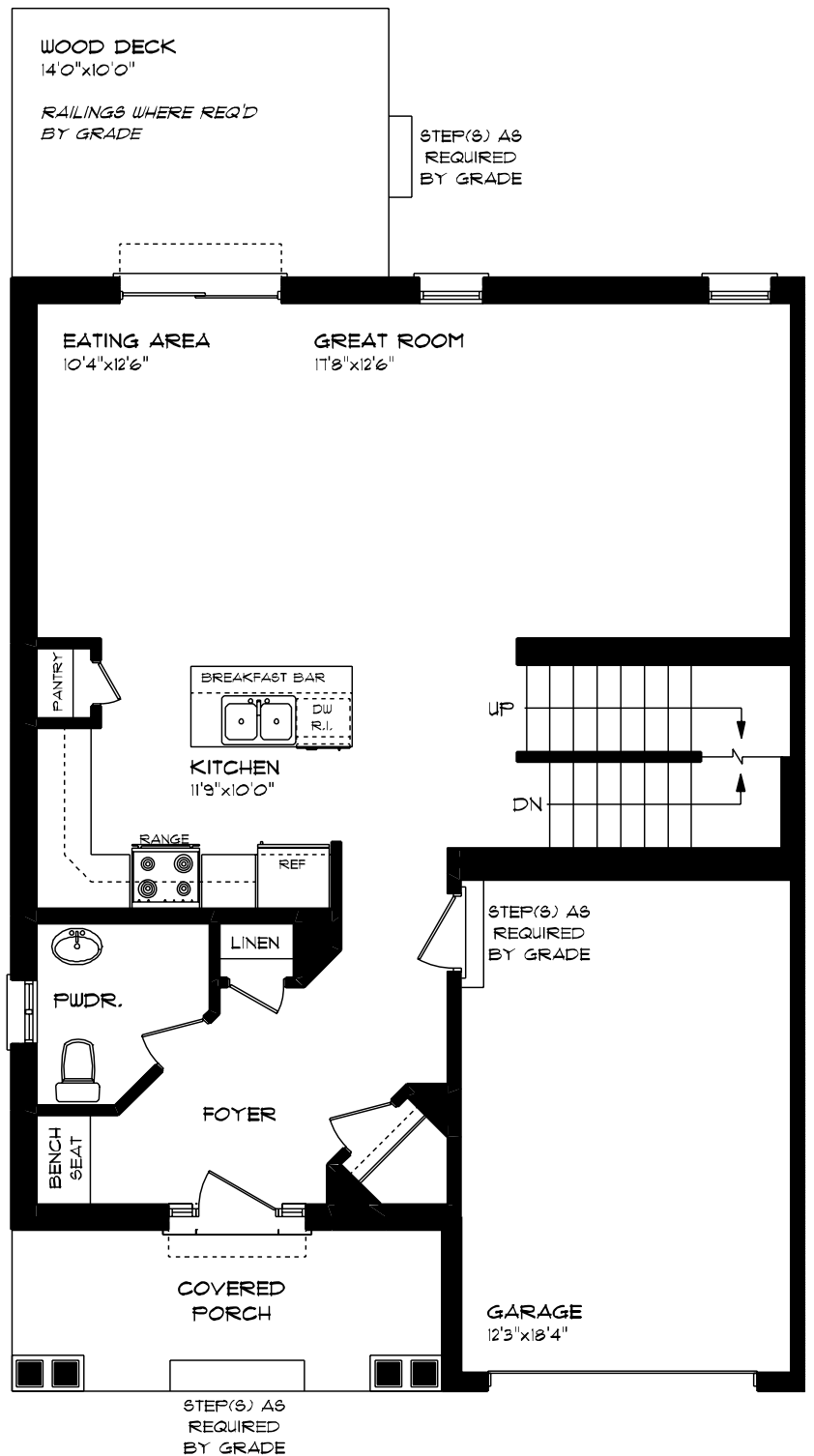
features

QUARTZ COUNTERTOPS

VINYL PLANK FLOORING

KITCHEN ISLAND

9' CEILINGS



WILLOW RUN

10 HEMLOCK CRESCENT

SECOND FLOOR

1,048 sq ft

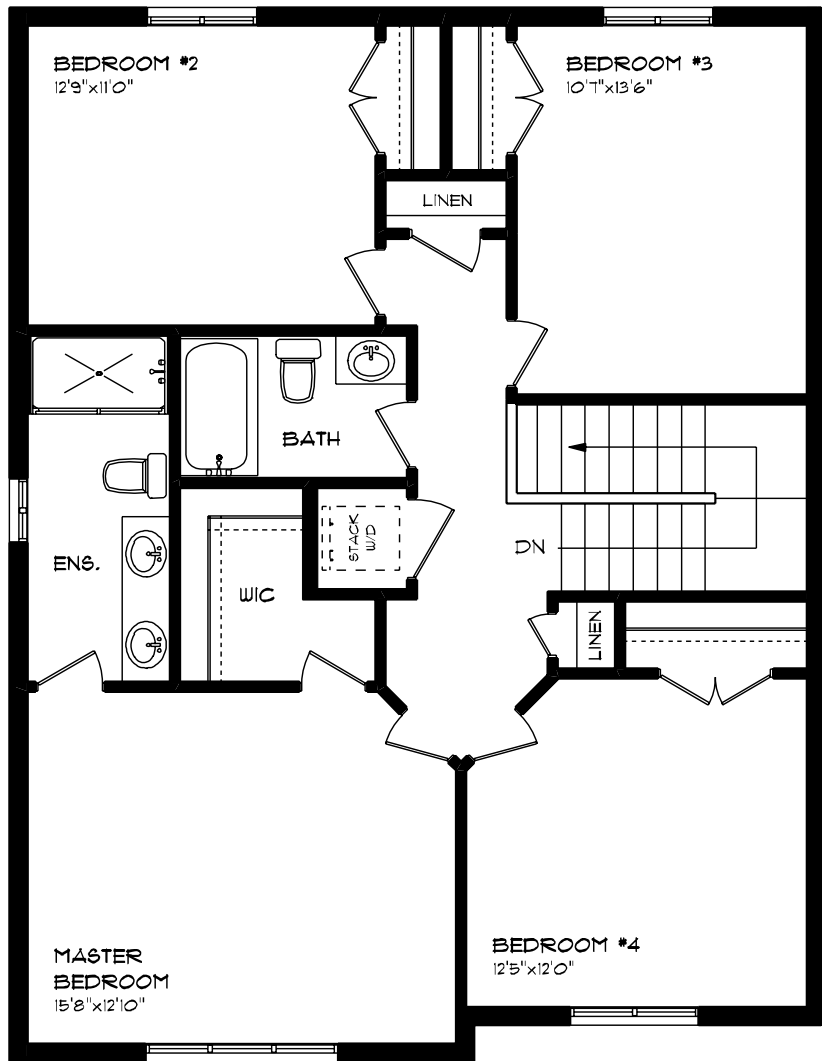
features

PROFESSIONALLY DESIGNED

CARPET FLOORING

VINYL PLANK FLOORING

WALK-IN CLOSET



WILLOW RUN

10 HEMLOCK CRESCENT

LOWER LEVEL UNFINISHED

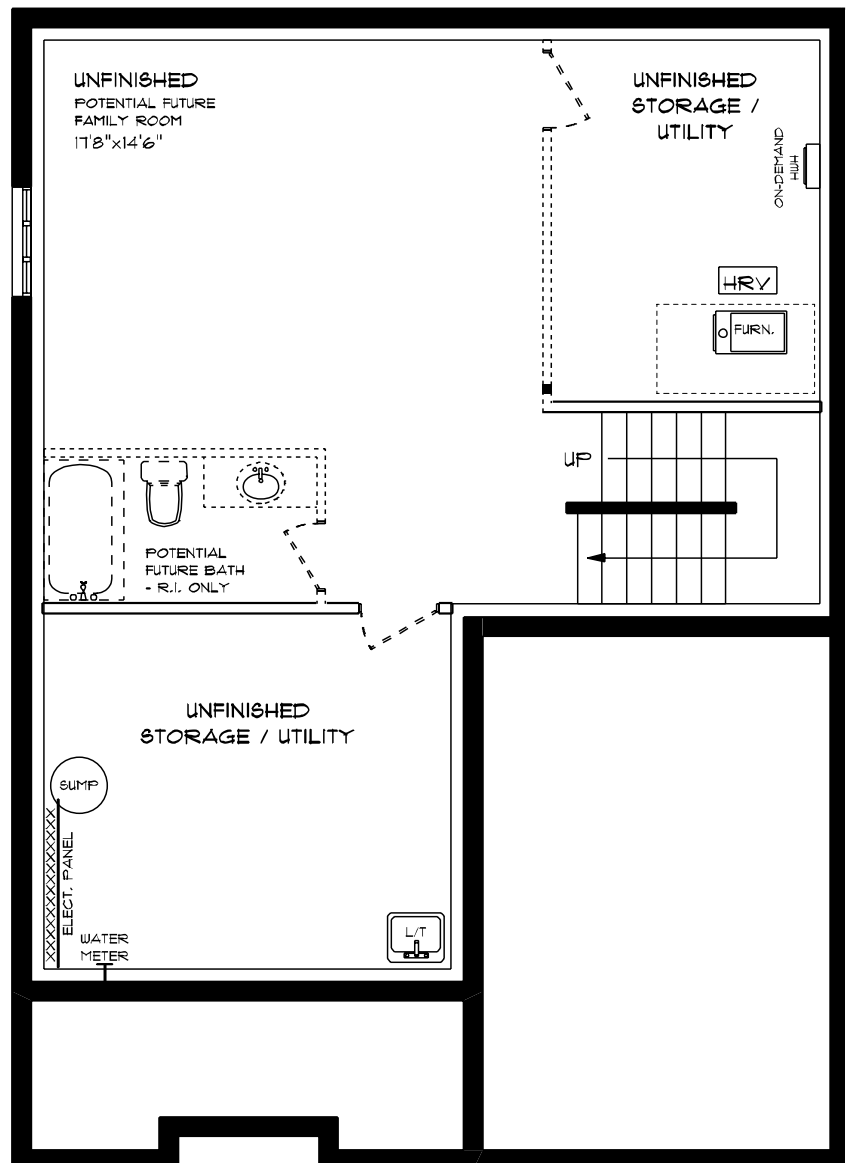
features

AIR CONDITIONING

GAS FURNACE WITH HRV

HUMIDIFIER

NEW HOME WARRANTY



WILLOW RUN

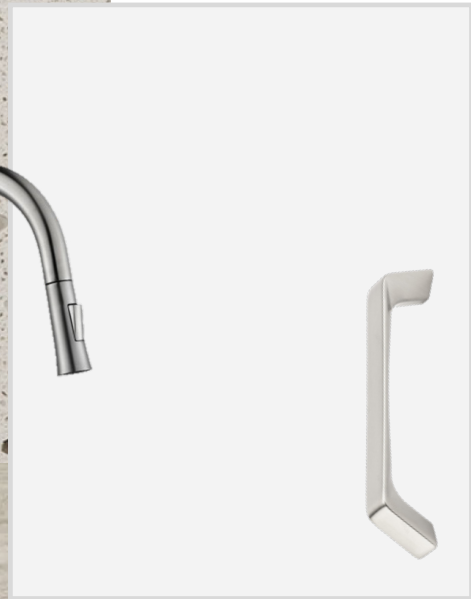
10 HEMLOCK CRESCENT

INTERIOR FINISHES

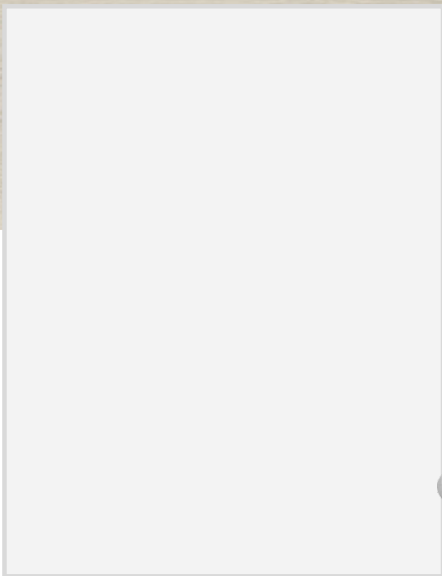


QUARTZ KITCHEN COUNTERTOPS

LUXURY VINYL PLANK



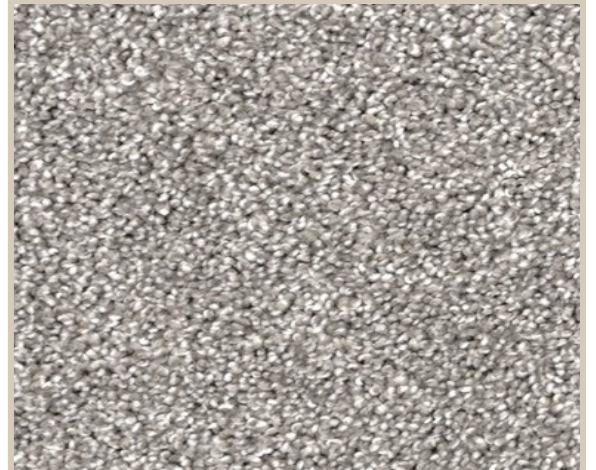
MELAMINE KITCHEN CABINETS



MELAMINE VANITY CABINETS



LAMINATE VANITY COUNTERTOPS



CARPET