

WILLOW RUN

12 HEMLOCK CRESCENT

AYLMER | ONTARIO

SEMI-DETACHED



THE DETAILS

PRICE	\$599,000
CLOSING DATE	April 24, 2025
LOT NUMBER	44B
BEDROOMS	4
BATHS	2.5
GARAGE	1
DRIVEWAY	17'
SQ FT	1,921
MODEL	Semi-Detached

Emma Smith SALES PROFESSIONAL

519.409.1474 | emma.smith@hayhoehomes.com



WWW.HAYHOEHOMES.COM

Price, products, colours & features are subject to change without notice. E. & O. E. AUGUST 30, 2024

HAYHOETM
-HOMES-

WILLOW RUN

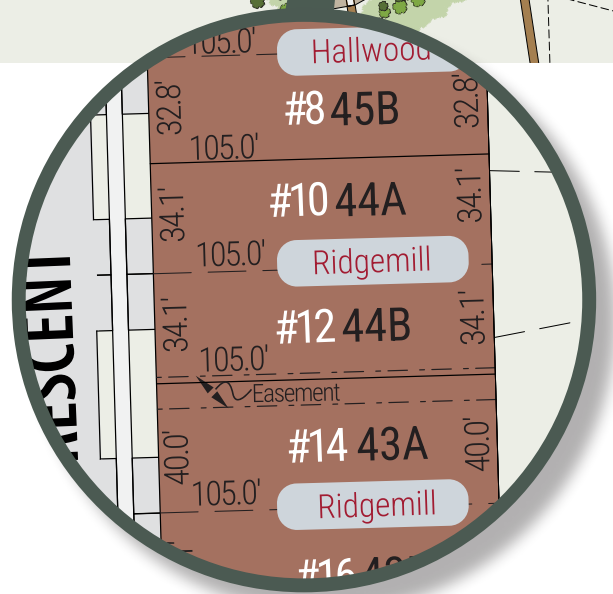
SITE PLAN

12 HEMLOCK CRESCENT | AYLMER ON



exterior features

- KEYLESS ENTRY
- TREATED WOOD DECK
- ASPHALT DRIVEWAY
- WALKING TRAILS



WILLOW RUN

12 HEMLOCK CRESCENT

MAIN FLOOR

873 sq ft

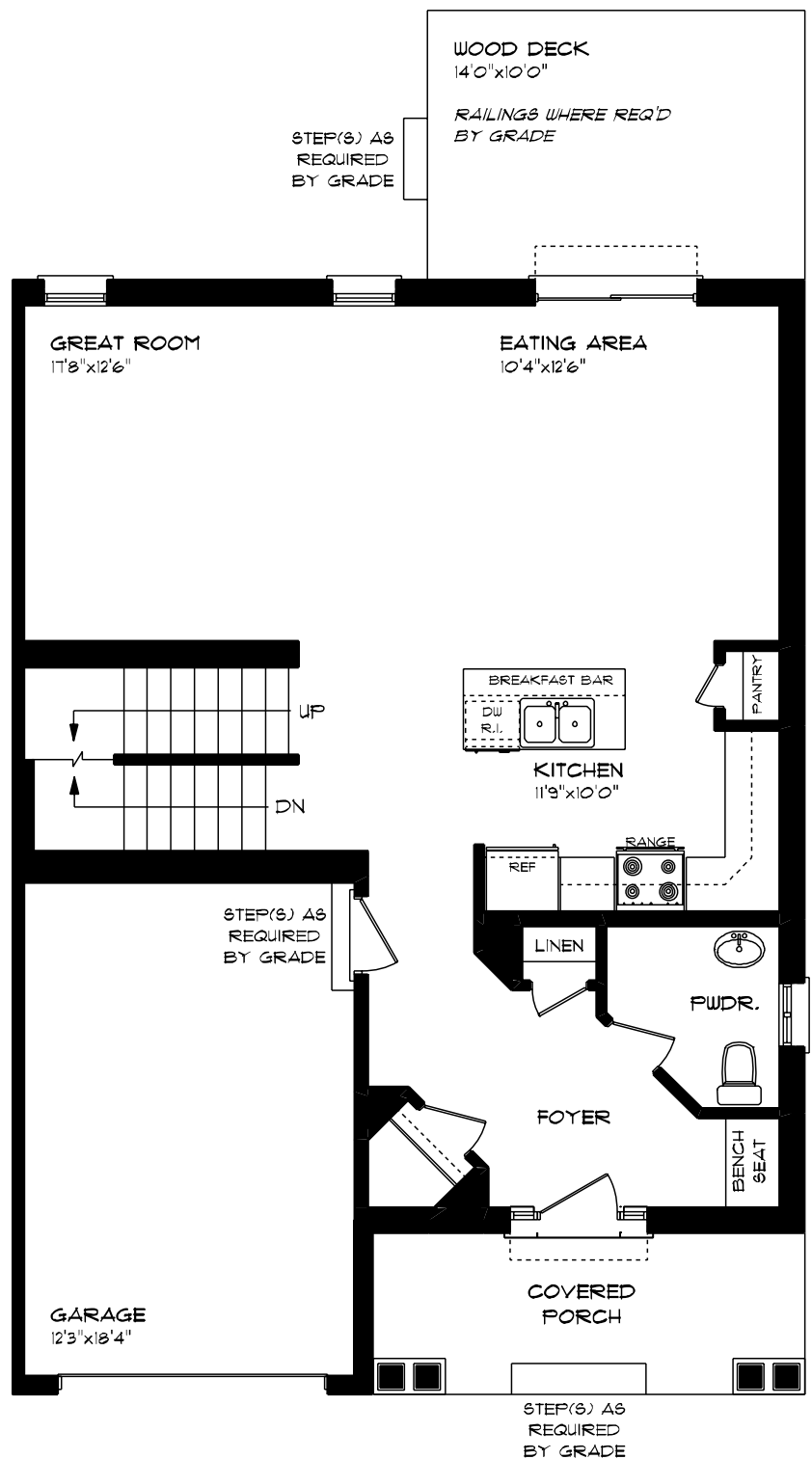
features

QUARTZ COUNTERTOPS

VINYL PLANK FLOORING

KITCHEN ISLAND

9' CEILINGS



WILLOW RUN

12 HEMLOCK CRESCENT

SECOND FLOOR

1,048 sq ft

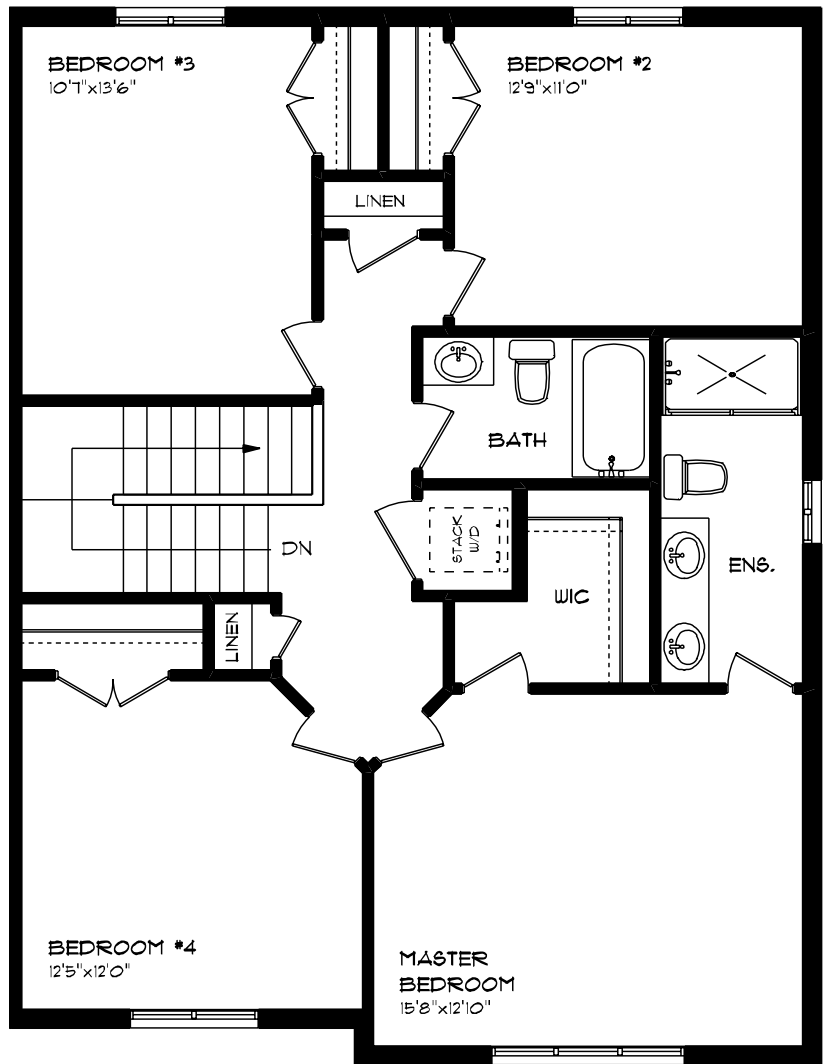
features

PROFESSIONALLY DESIGNED

CARPET FLOORING

VINYL PLANK FLOORING

WALK-IN CLOSET



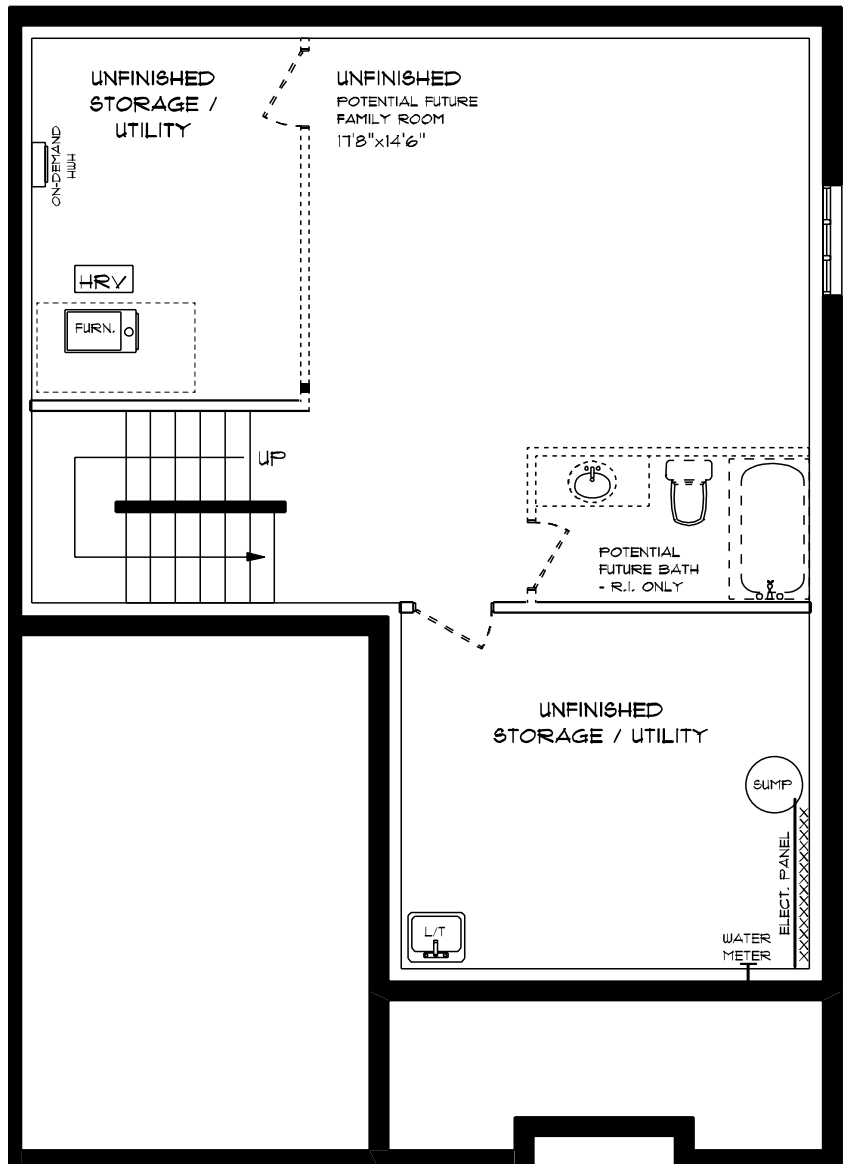
WILLOW RUN

12 HEMLOCK CRESCENT

LOWER LEVEL UNFINISHED

features

- AIR CONDITIONING
- GAS FURNACE WITH HRV
- HUMIDIFIER
- NEW HOME WARRANTY



WILLOW RUN

12 HEMLOCK CRESCENT

INTERIOR FINISHES

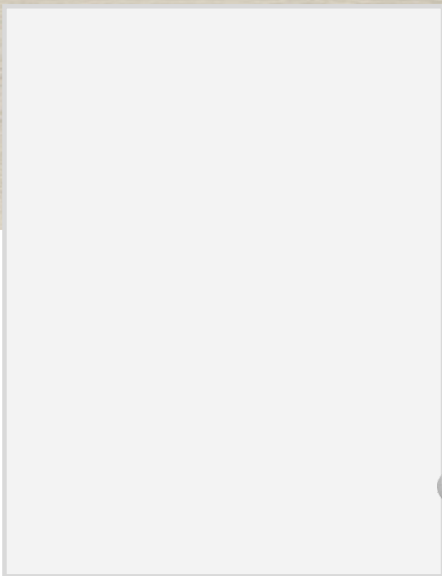


QUARTZ KITCHEN COUNTERTOPS

LUXURY VINYL PLANK



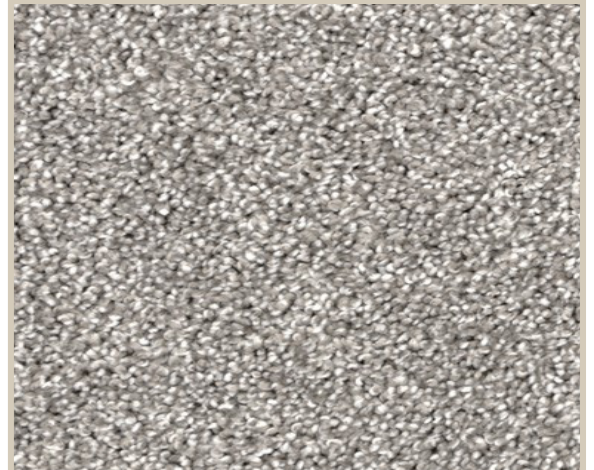
MELAMINE KITCHEN CABINETS



MELAMINE VANITY CABINETS



LAMINATE VANITY COUNTERTOPS



CARPET