

# T O W N H O M E



ESSENTIAL FEATURES

## 125 CORTLAND TERRACE

ORCHARD PARK MEADOWS, ST. THOMAS

### THE DETAILS

PRICE	\$ 555,000
CLOSING DATE	SEPTEMBER 26, 2024
LOT NUMBER	44E
BEDROOMS	3
BATHS	2.5
SQFT	1615
GARAGE	1
MODEL	2 STOREY TOWN

**HAYHOE™**  
— HOMES —



#### SALES PROFESSIONAL

DAVE MATTHEWS

519.633.9215

dave.matthews@hayhoehomes.com

# SITE PLAN

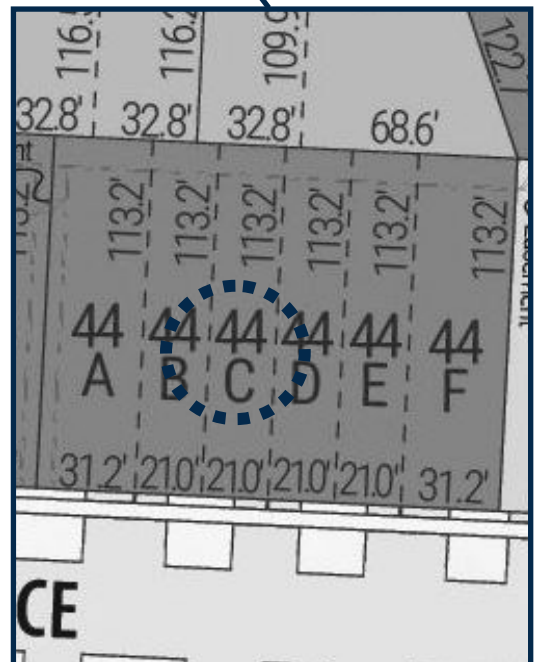


## 121 CORTLAND

### EXTERIOR FEATURES:

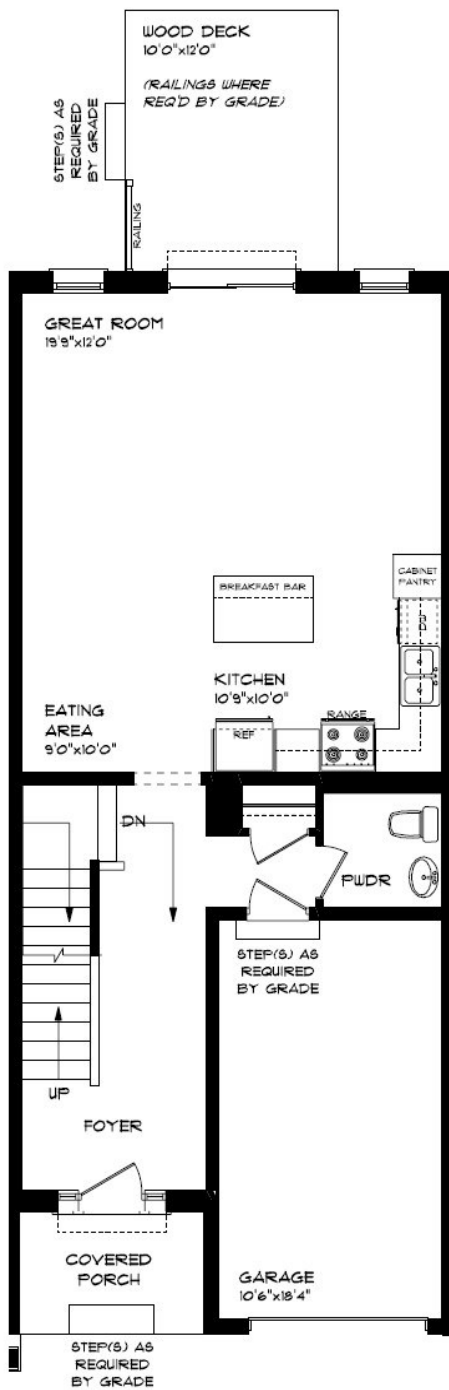
- KEYLESS ENTRY
- TREATED WOOD DECK
- ASPHALT DRIVEWAY
- WALKING TRAILS

**HAYHOE™**  
HOMES



# MAIN FLOOR

125 CORTLAND TERR., ST. THOMAS



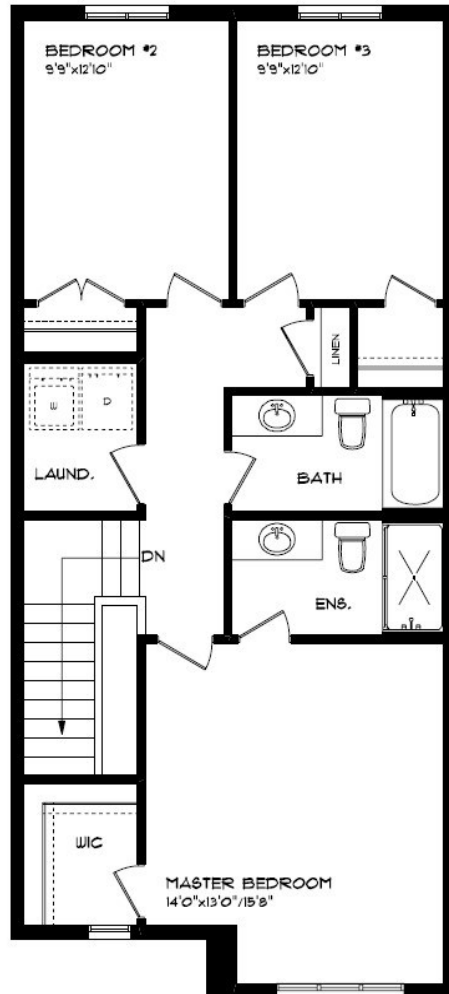
MAIN FLOOR:  
APPROX 755 SQFT

- SINGLE CAR GARAGE
- KITCHEN ISLAND
- VINYL PLANK FLOORING
- QUARTZ COUNTERTOPS

**HAYHOE™**  
— HOMES —

# SECOND FLOOR

125 CORTLAND TERR., ST. THOMAS



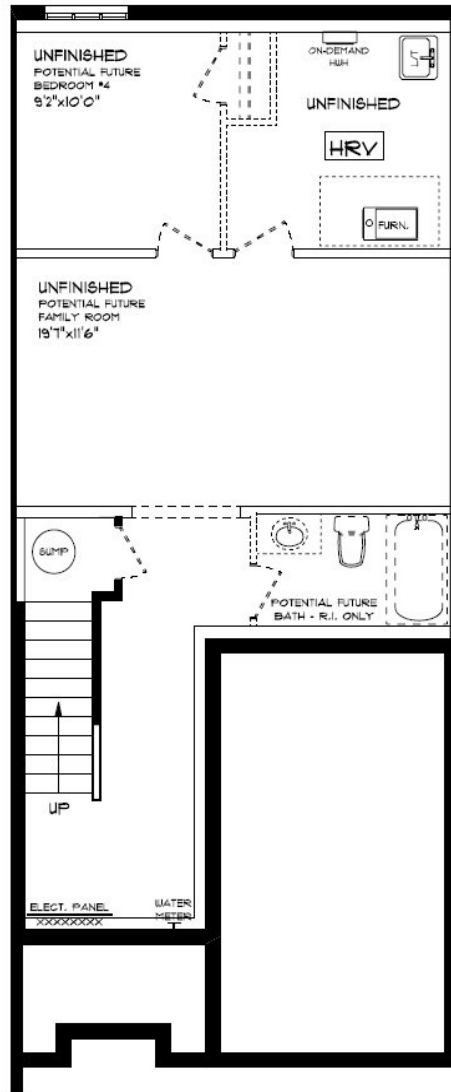
SECOND FLOOR:  
APPROX 860 SQFT

SECOND FLOOR LAUNDRY  
PROFESSIONALLY DESIGNED  
CARPET FLOORING  
VINYL PLANK FLOORING  
WALK-IN CLOSET

**HAYHOE™**  
— HOMES —

# BASEMENT

125 CORTLAND TERR., ST. THOMAS



BASEMENT:  
UNFINISHED

- AIR CONDITIONING
- GAS FURNACE WITH HRV
- HUMIDIFIER
- NEW HOME WARRANTY

**HAYHOE**<sup>TM</sup>  
— HOMES —

# INTERIOR FINISHES

## 125 CORTLAND



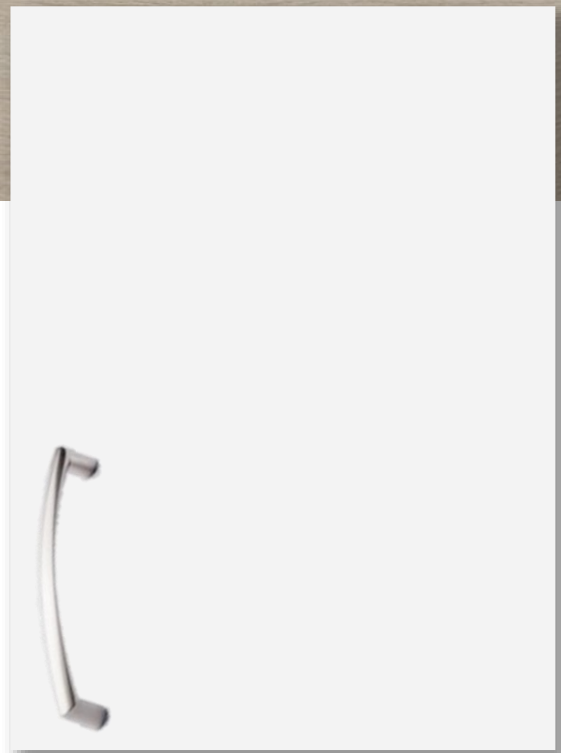
KITCHEN COUNTERTOPS



LUXURY VINYL PLANK



PAINT  
COLOUR



KITCHEN  
CABINETS

ISLAND  
PENDANTS



FOYER  
FIXTURE



# INTERIOR FINISHES

## 125 CORTLAND

INTERIOR DOOR STYLE

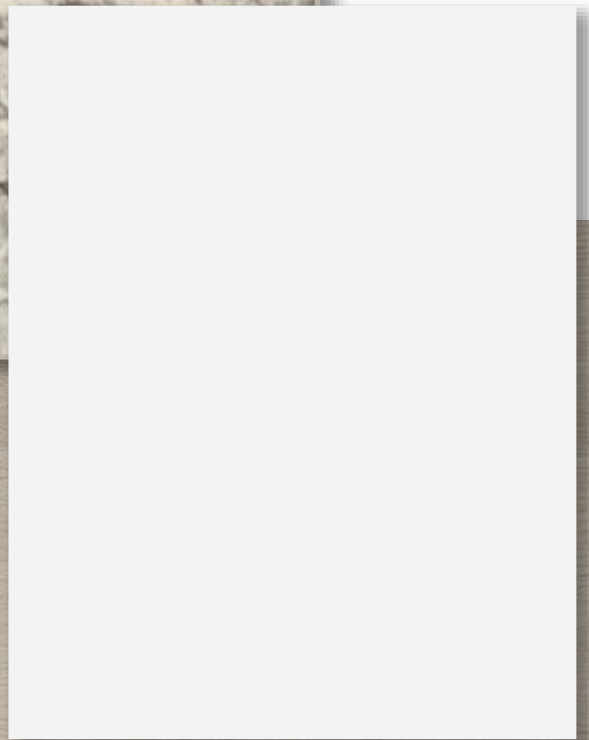
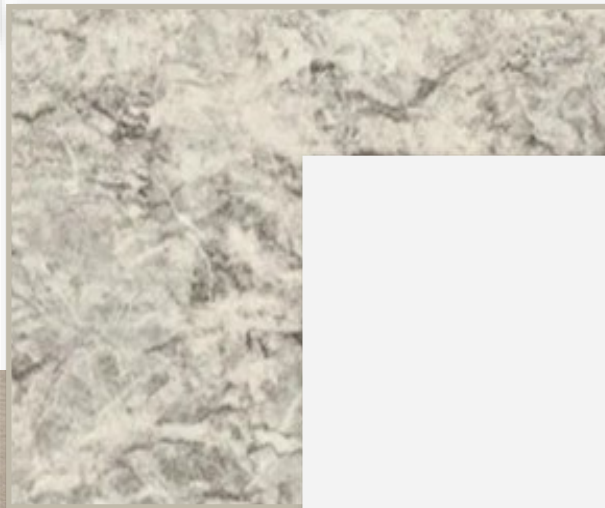


CARPET

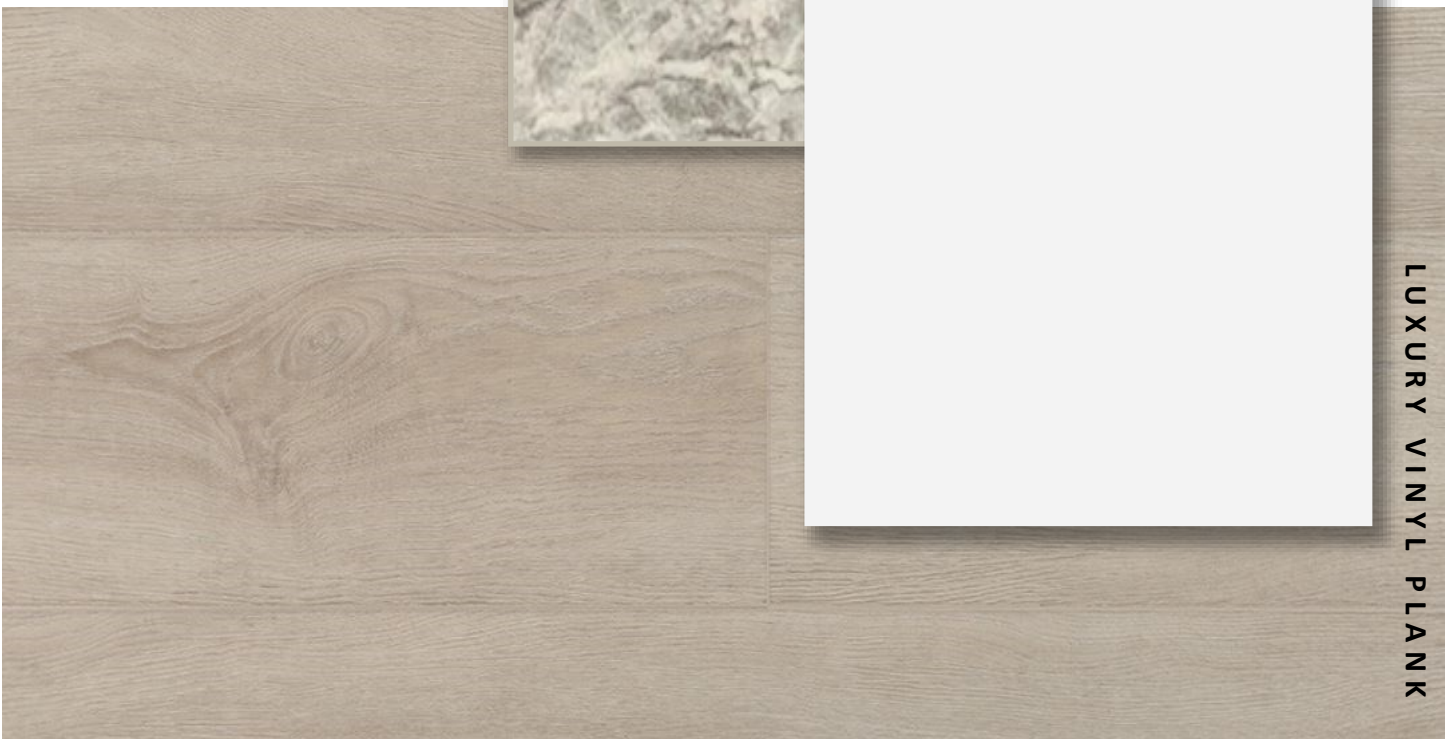


BATHROOM  
COUNTERTOP

BATHROOM  
CABINERY



LUXURY VINYL PLANK



PRICE, PRODUCTS, COLOURS & FEATURES ARE SUBJECT TO CHANGE WITHOUT NOTICE.  
COLOURS SHOWN MAY VARY FROM INSTALLED MATERIALS. E & O.E

CREATED SEPT 1, 2022