

WILLOW RUN

6 HEMLOCK CRESCENT

AYLMER | ONTARIO

SEMI-DETACHED



THE DETAILS

PRICE	\$629,000
CLOSING DATE	April 7, 2025
LOT NUMBER	45A
BEDROOMS	3
BATHS	3
GARAGE	1
DRIVEWAY	17'
SQ FT	1,831
MODEL	Semi-Detached

Emma Smith SALES PROFESSIONAL

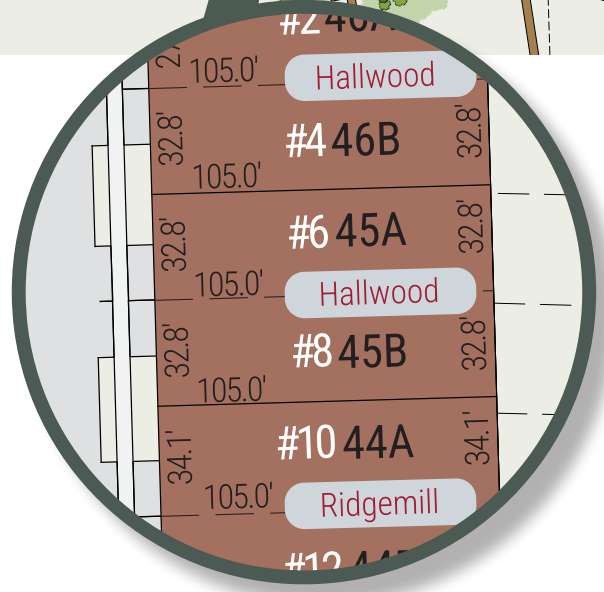
519.409.1474 | emma.smith@hayhoehomes.com



WILLOW RUN

SITE PLAN

6 HEMLOCK CRESCENT | AYLMER ON



exterior features

- KEYLESS ENTRY
- TREATED WOOD DECK
- BBQ GAS LINE
- ASPHALT DRIVEWAY
- WALKING TRAILS

WILLOW RUN

6 HEMLOCK CRESCENT

MAIN FLOOR

1,225 sq ft

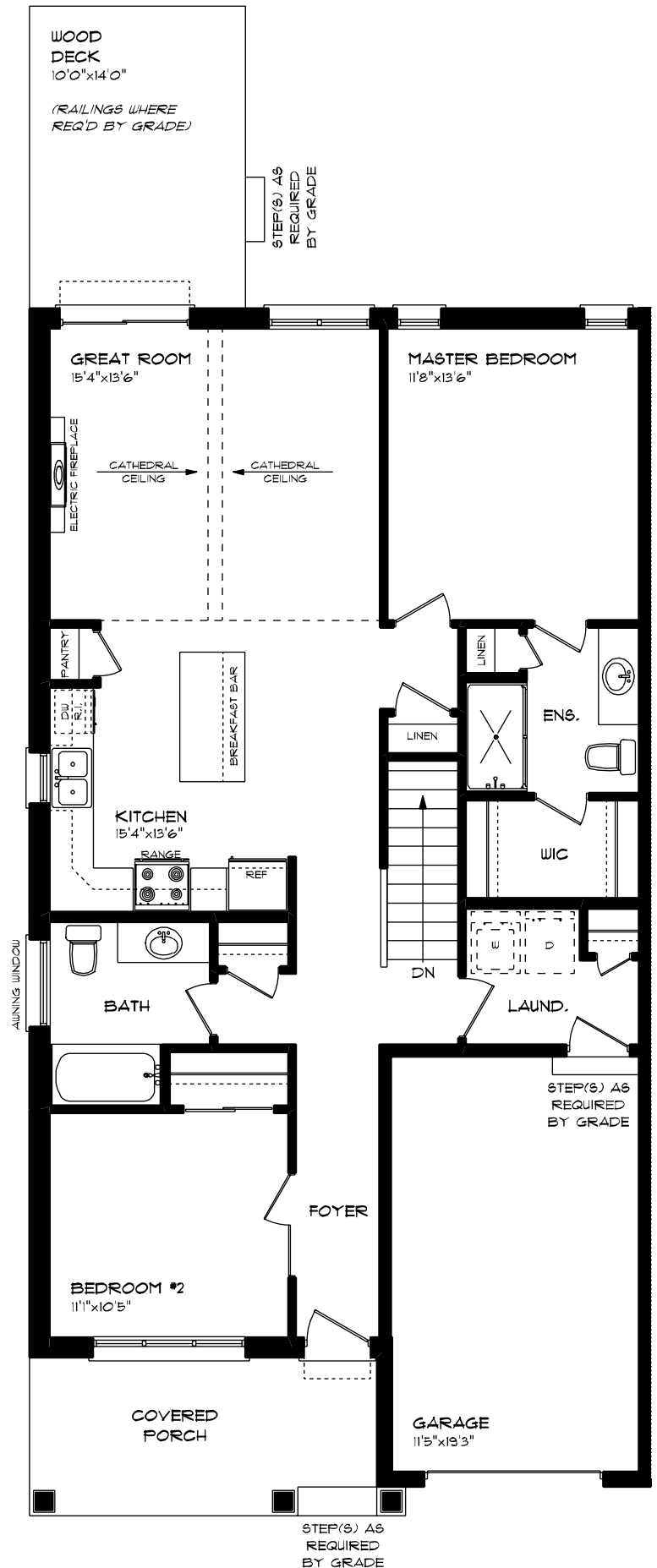
features

MAIN FLOOR LAUNDRY

QUARTZ COUNTERTOPS

KITCHEN BACKSPLASH

9' CEILINGS



WILLOW RUN

6 HEMLOCK CRESCENT

LOWER LEVEL

606 sq ft

features

CARPET FLOORING

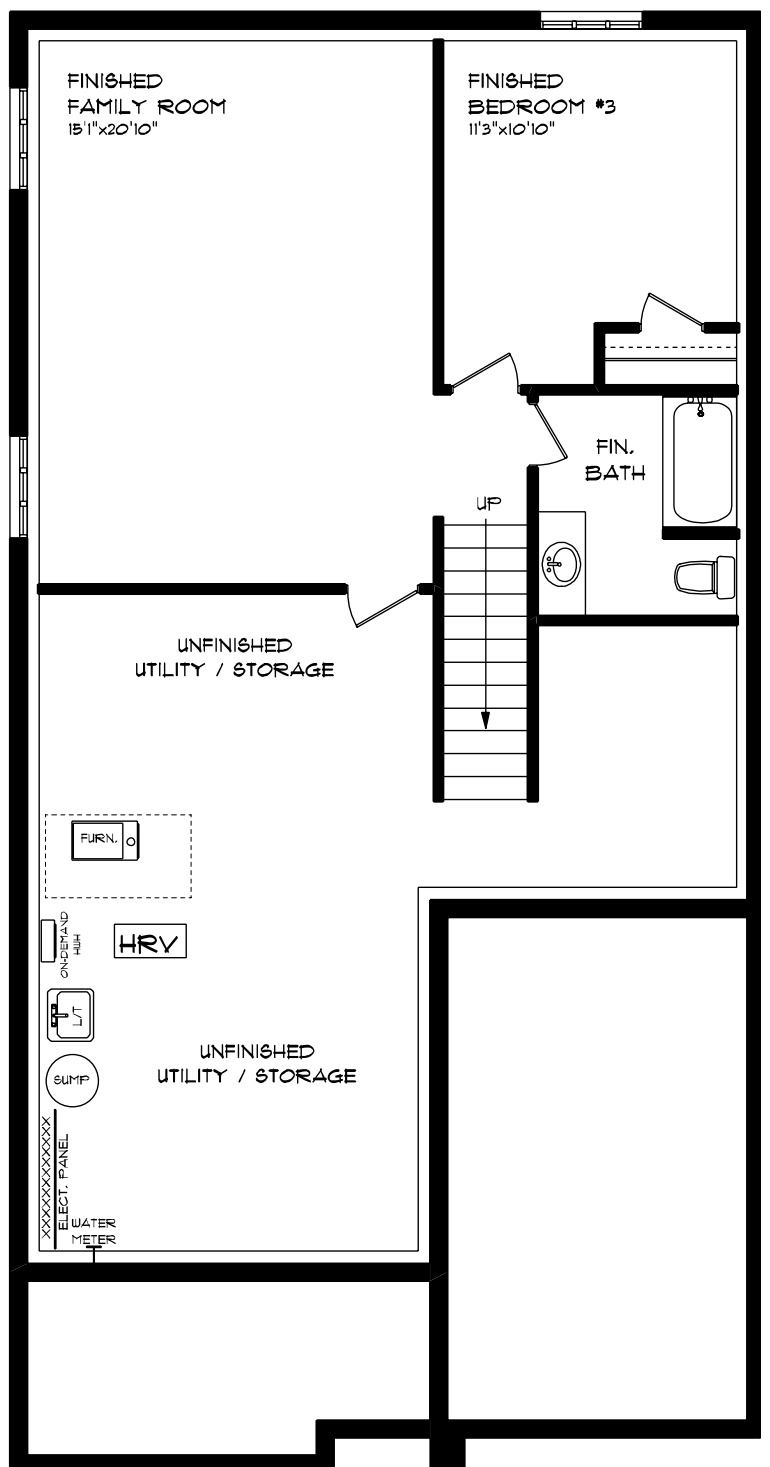
LVP FLOORING

AIR CONDITIONING

GAS FURNACE WITH HRV

HUMIDIFIER

NEW HOME WARRANTY



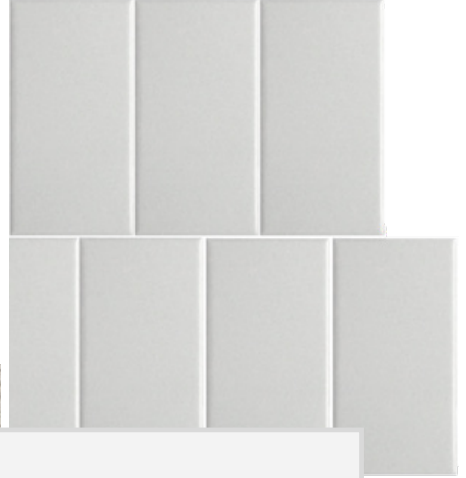
WILLOW RUN

6 HEMLOCK CRESCENT



INTERIOR FINISHES

KITCHEN BACKSPLASH



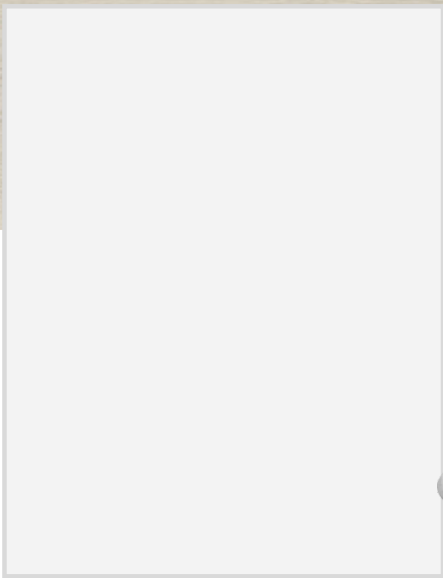
QUARTZ KITCHEN COUNTERTOPS



LUXURY VINYL PLANK



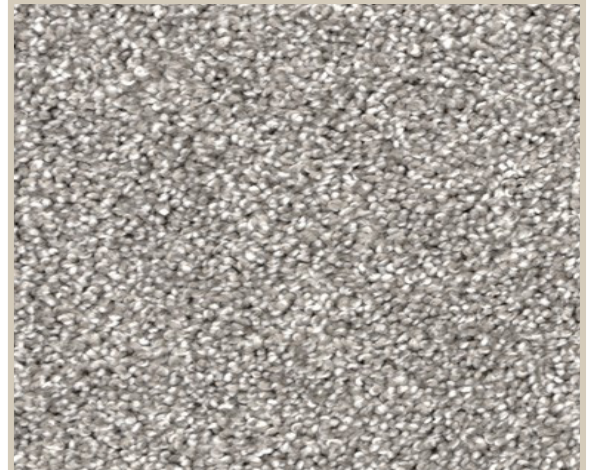
MELAMINE KITCHEN CABINETS



MELAMINE VANITY CABINETS



LAMINATE VANITY COUNTERTOPS



CARPET