

WILLOW RUN

8 HEMLOCK CRESCENT

AYLMER | ONTARIO

SEMI-DETACHED

PREMIUM
SPECS



THE DETAILS

| | |
|--------------|---------------|
| PRICE | \$629,000 |
| CLOSING DATE | April 8, 2025 |
| LOT NUMBER | 45B |
| BEDROOMS | 3 |
| BATHS | 3 |
| GARAGE | 1 |
| DRIVEWAY | 17' |
| SQ FT | 1,831 |
| MODEL | Semi-Detached |

Emma Smith SALES PROFESSIONAL

519.409.1474 | emma.smith@hayhoehomes.com



WWW.HAYHOEHOMES.COM

Price, products, colours & features are subject to change without notice. E. & O. E. AUGUST 30, 2024

HAYHOETM
-HOMES-

WILLOW RUN

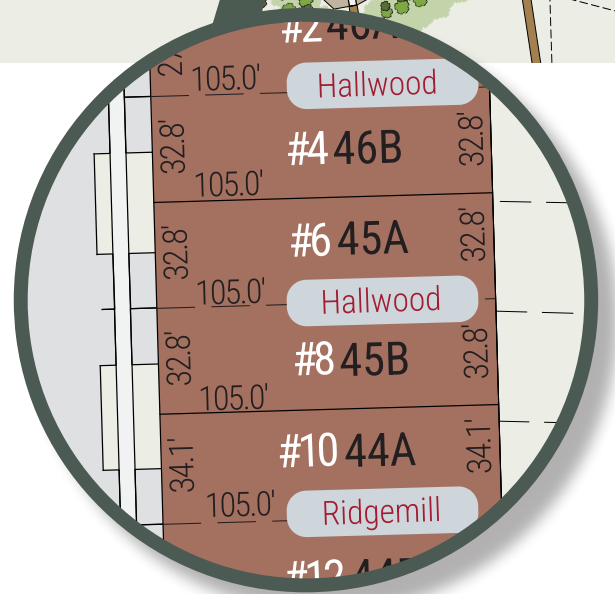
SITE PLAN

8 HEMLOCK CRESCENT | AYLMER ON



exterior features

- KEYLESS ENTRY
- TREATED WOOD DECK
- BBQ GAS LINE
- ASPHALT DRIVEWAY
- WALKING TRAILS



WILLOW RUN

8 HEMLOCK CRESCENT

MAIN FLOOR

1,225 sq ft

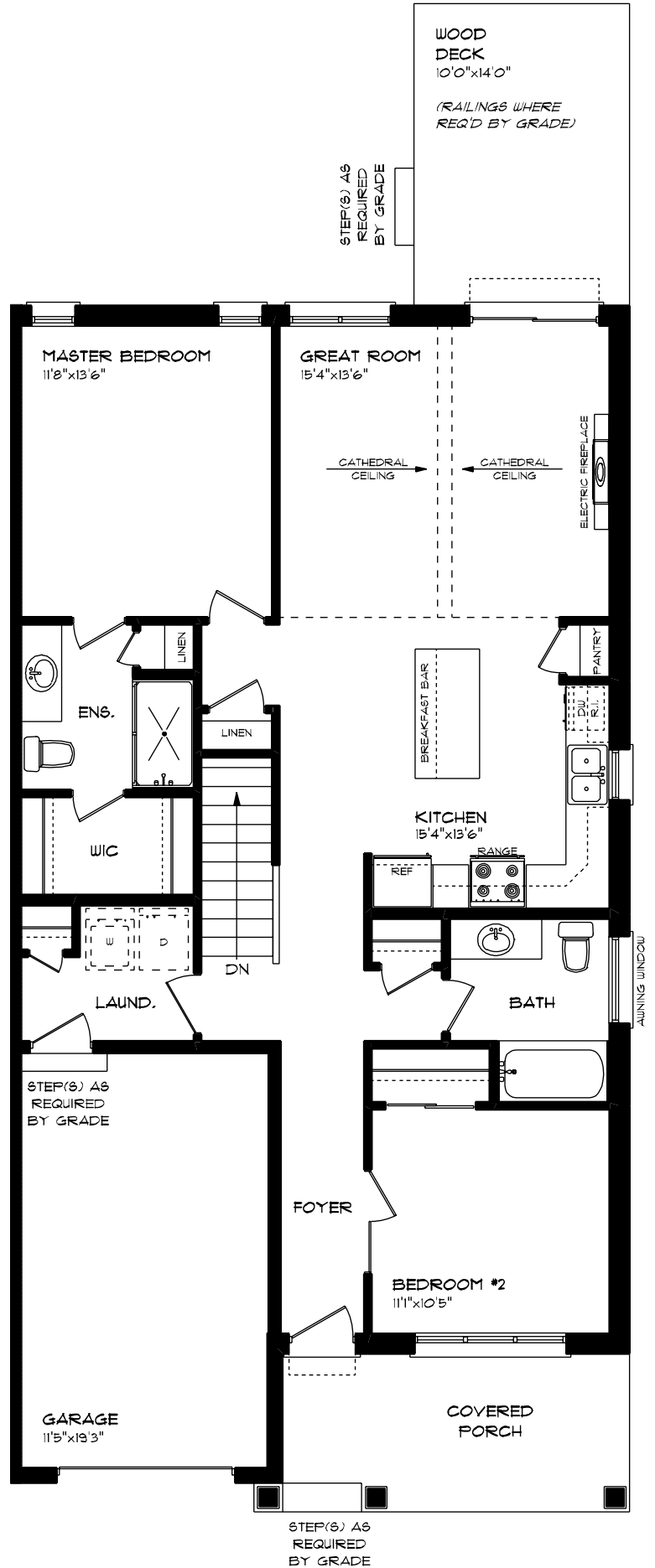
features

MAIN FLOOR LAUNDRY

QUARTZ COUNTERTOPS

KITCHEN BACKSPLASH

9' CEILINGS



WILLOW RUN

8 HEMLOCK CRESCENT

LOWER LEVEL

606 sq ft

features

CARPET FLOORING

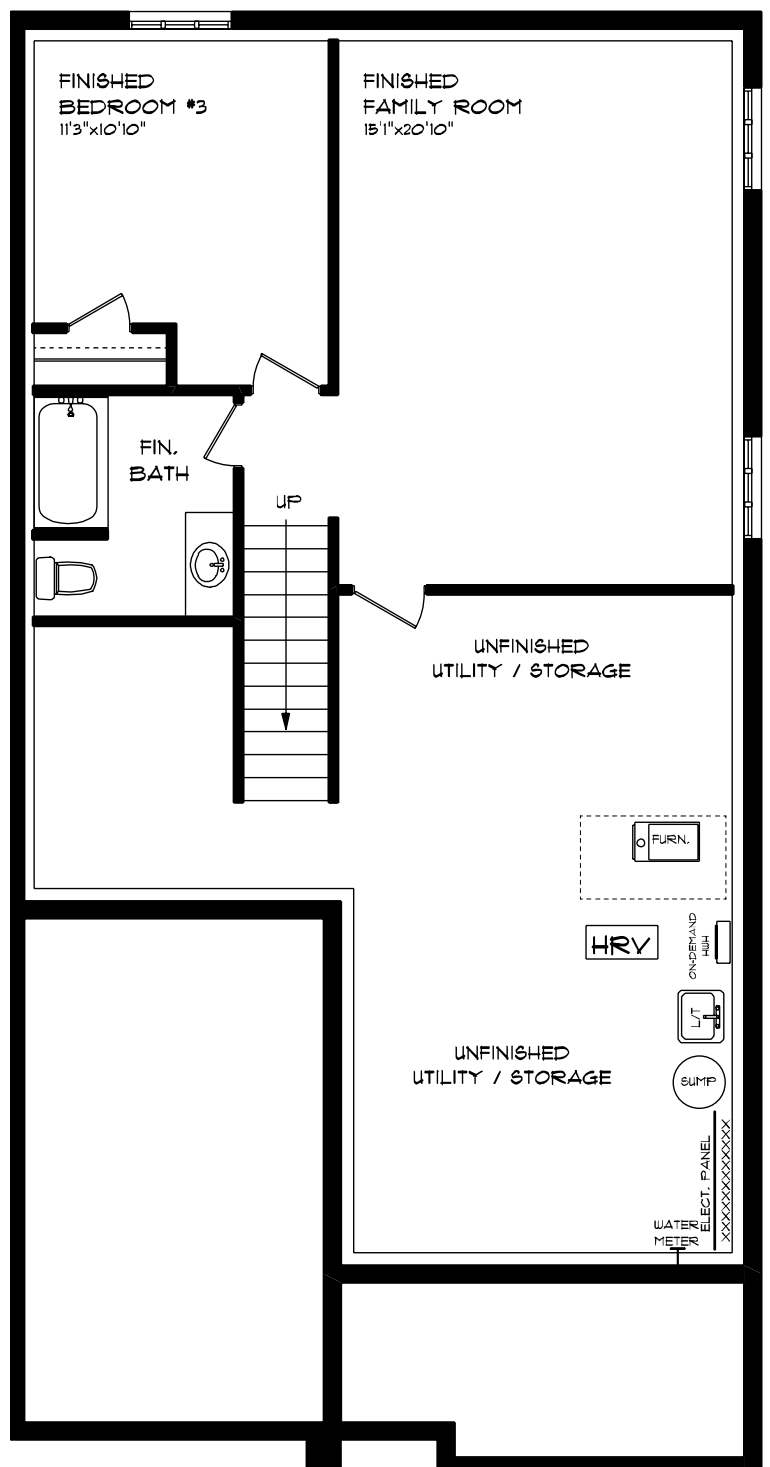
LVP FLOORING

AIR CONDITIONING

GAS FURNACE WITH HRV

HUMIDIFIER

NEW HOME WARRANTY



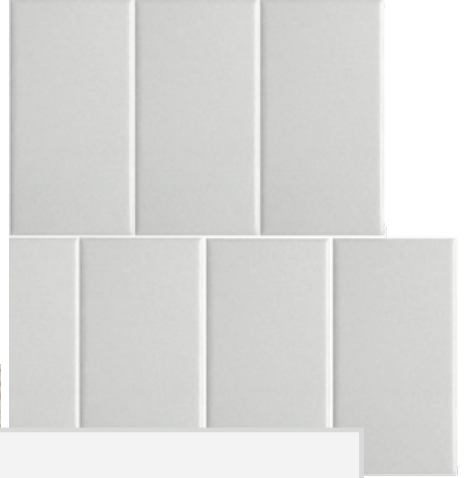
WILLOW RUN

8 HEMLOCK CRESCENT



INTERIOR FINISHES

KITCHEN BACKSPLASH



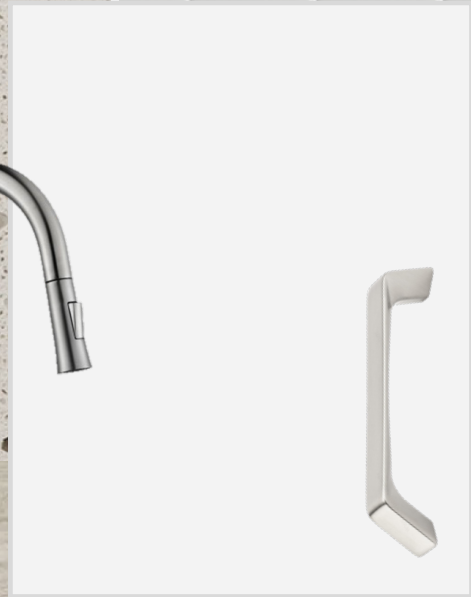
QUARTZ KITCHEN COUNTERTOPS



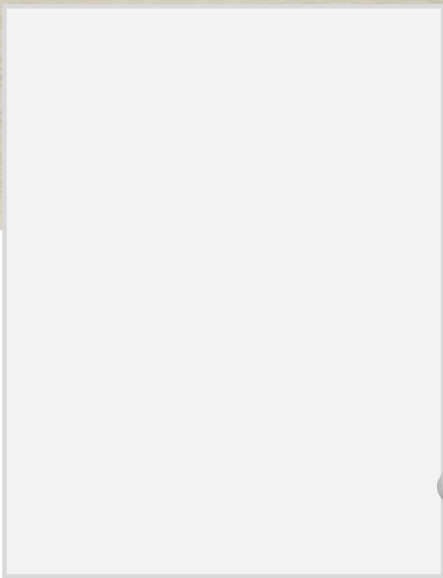
LUXURY VINYL PLANK



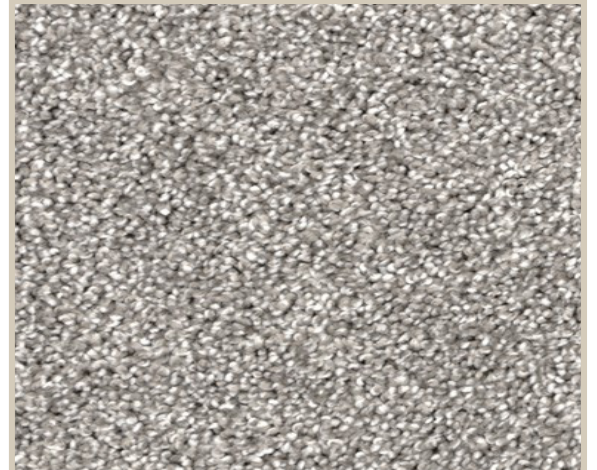
MELAMINE KITCHEN CABINETRY



MELAMINE VANITY CABINETRY



LAMINATE VANITY COUNTERTOPS



CARPET