

WILLOW RUN

15 HEMLOCK CRESCENT

AYLMER | ONTARIO

TOWNHOME



THE DETAILS

PRICE	\$519,000
CLOSING DATE	April 1, 2025
LOT NUMBER	49A
BEDROOMS	3
BATHS	2.5
GARAGE	1
DRIVEWAY	17'
SQ FT	1,645
MODEL	Townhome

Emma Smith SALES PROFESSIONAL

519.409.1474 | emma.smith@hayhoehomes.com



WWW.HAYHOEHOMES.COM

Price, products, colours & features are subject to change without notice. E. & O. E. SEPTEMBER 6, 2024

HAYHOE[™]
HOMES

WILLOW RUN

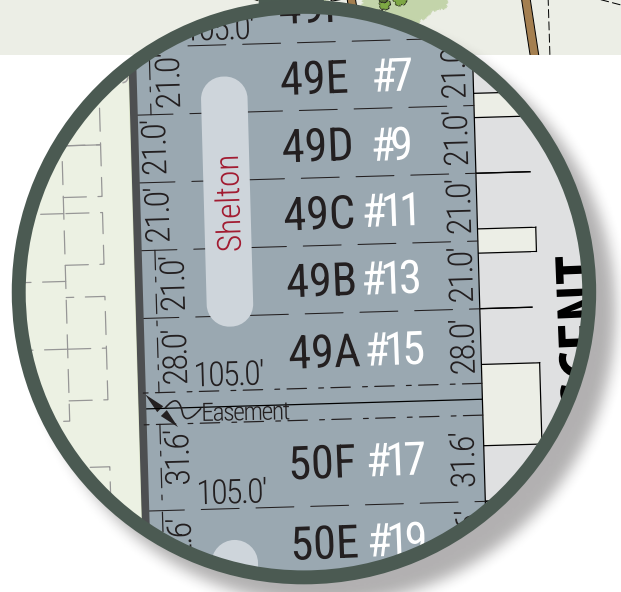
SITE PLAN

15 HEMLOCK CRESCENT | AYLMER ON



exterior features

- KEYLESS ENTRY
- TREATED WOOD DECK
- ASPHALT DRIVEWAY
- WALKING TRAILS



WILLOW RUN

15 HEMLOCK CRESCENT

MAIN FLOOR

778 sq ft

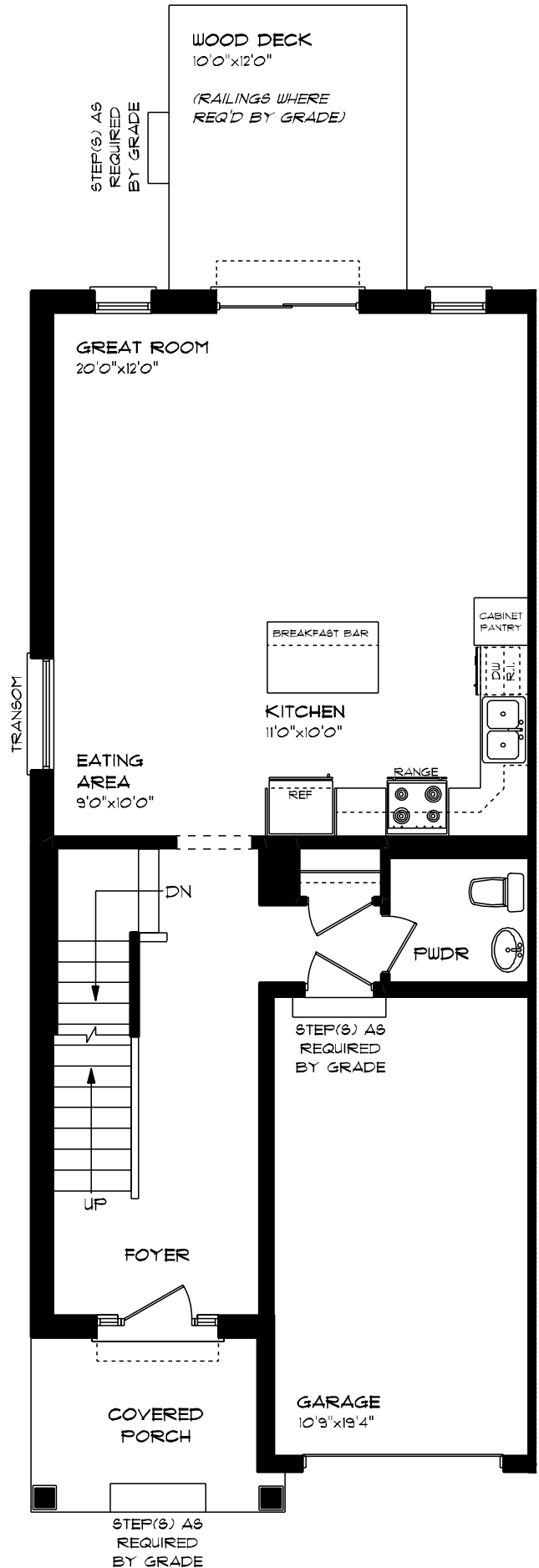
features

QUARTZ COUNTERTOPS

VINYL PLANK FLOORING

KITCHEN ISLAND

9' CEILINGS



WILLOW RUN

15 HEMLOCK CRESCENT

SECOND FLOOR

867 sq ft

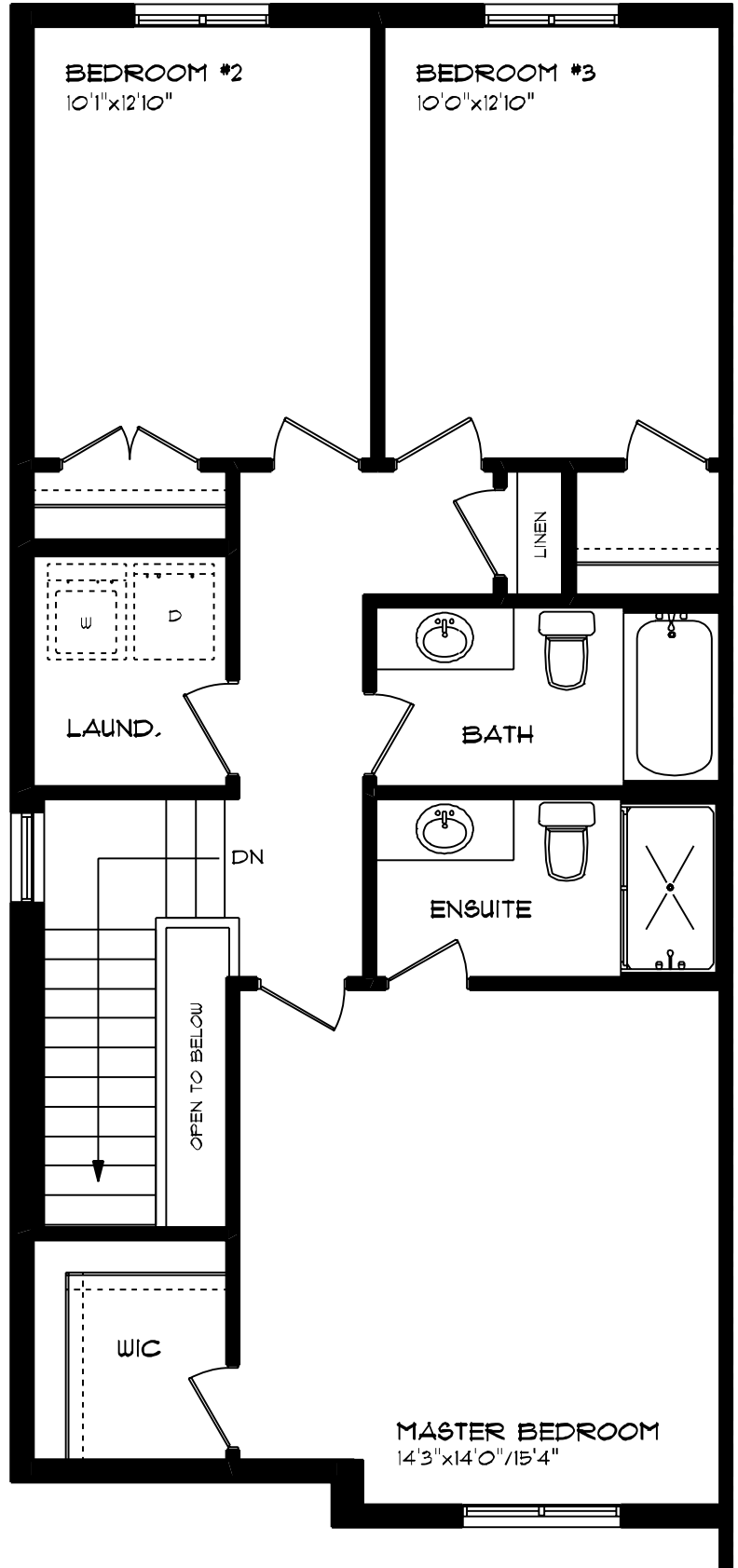
features

PROFESSIONALLY DESIGNED

CARPET FLOORING

VINYL PLANK FLOORING

WALK-IN CLOSET



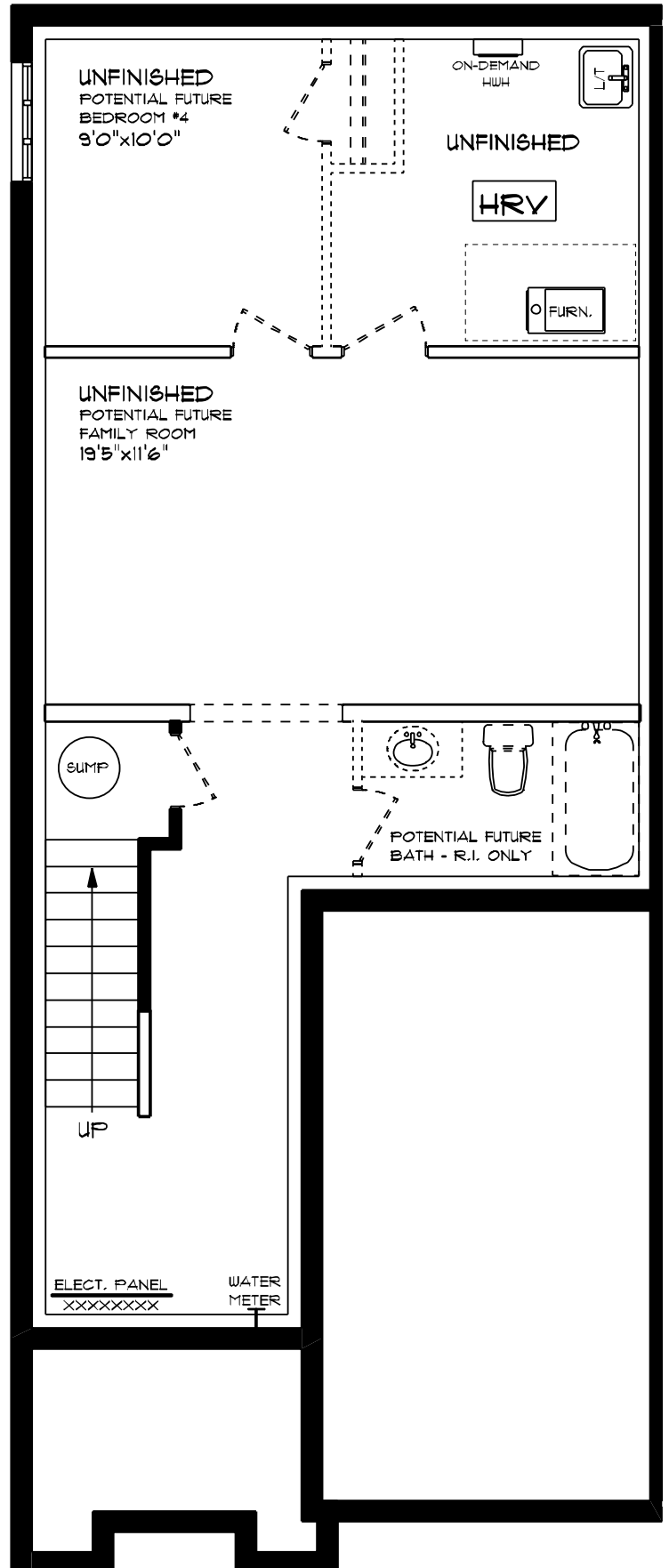
WILLOW RUN

15 HEMLOCK CRESCENT

LOWER LEVEL UNFINISHED

features

- AIR CONDITIONING
- GAS FURNACE WITH HRV
- HUMIDIFIER
- NEW HOME WARRANTY



WILLOW RUN

15 HEMLOCK CRESCENT

INTERIOR FINISHES

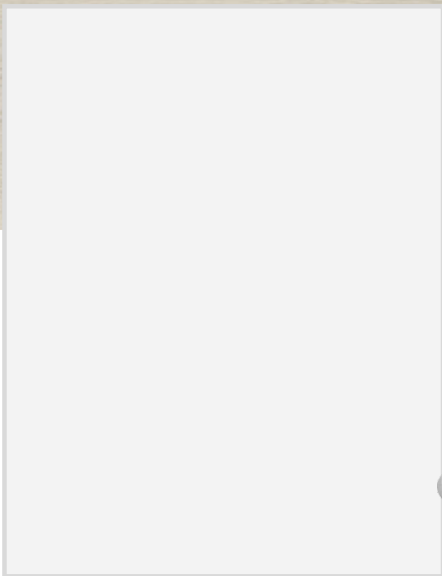


QUARTZ KITCHEN COUNTERTOPS

LUXURY VINYL PLANK



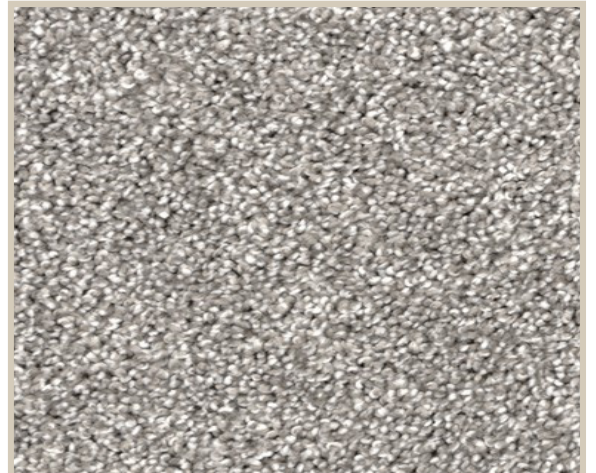
MELAMINE KITCHEN CABINETS



MELAMINE VANITY CABINETS



LAMINATE VANITY COUNTERTOPS



CARPET