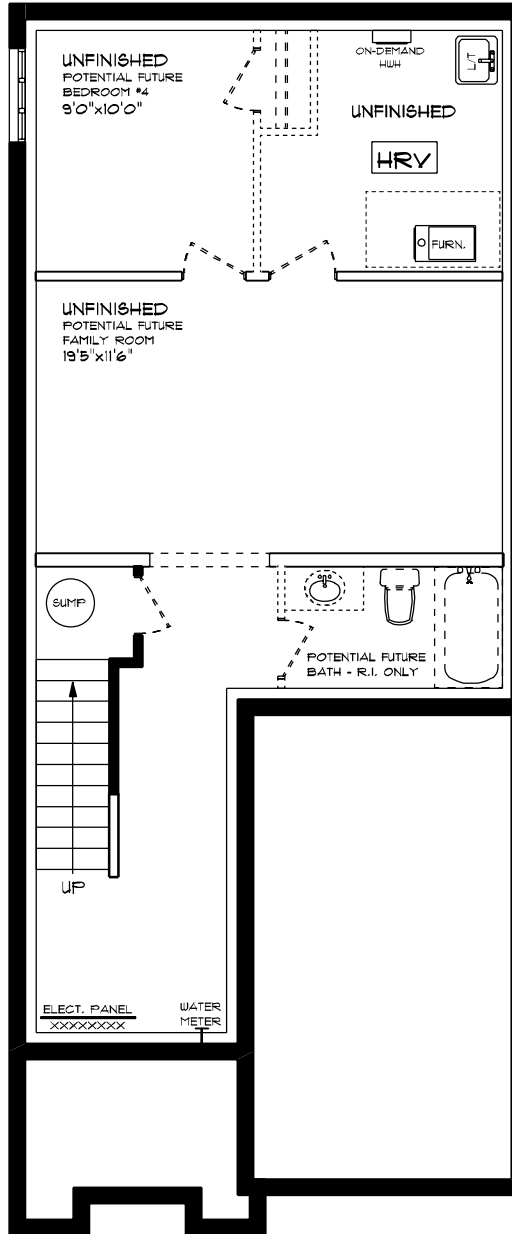




SHELTON (ESSENTIAL SPECS)
LOT 49A (#15) HEMLOCK CRESCENT
FRONT ELEVATION
9' MAIN FLOOR CEILING
APPROX. 1,645 SQ. FT.

This plan is the property of Mayhew Homes and any reproduction of this plan, its concepts or ideas, is strictly prohibited. Plans and specifications are approximate and are subject to change without notice. Finished area and room dimensions will change depending on front elevation selection. E.40.E. 2024

CREATED: MAR. 2024

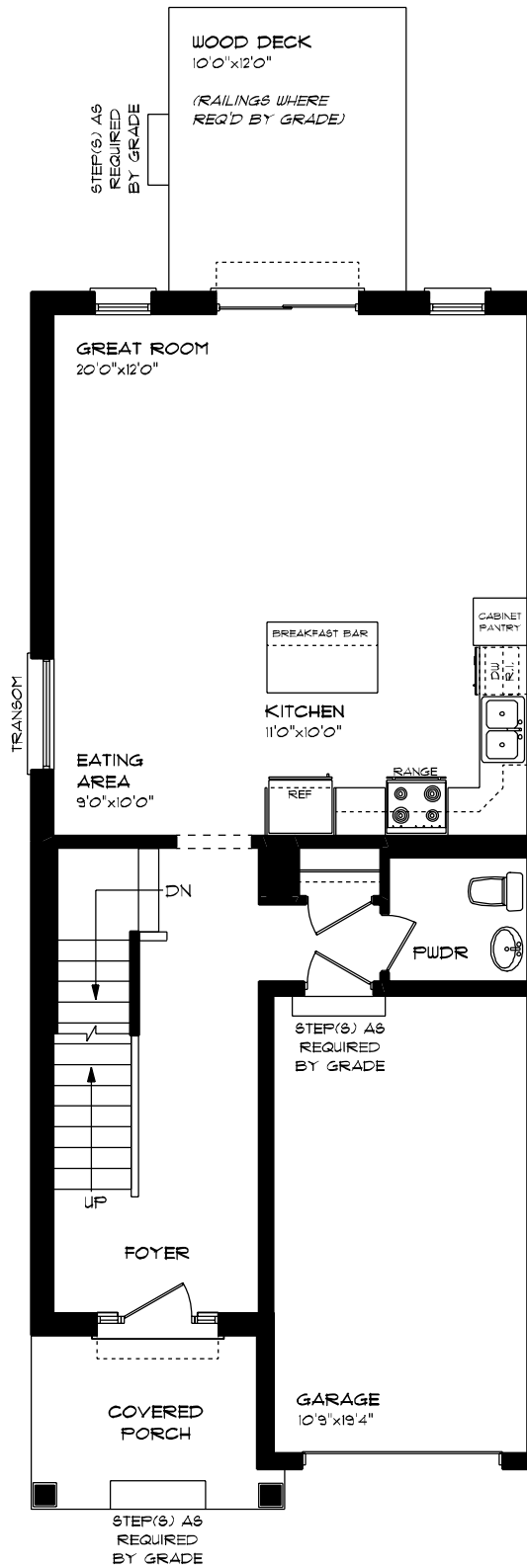


**SHELTON (ESSENTIAL SPEC6)
 LOT 49A (#15) HEMLOCK CRESCENT
 LOWER LEVEL PLAN**

UNFINISHED

This plan is the property of Ingalls Homes and any reproduction of this plan, its concepts or ideas, is strictly prohibited. Plans and specifications are approximate and are subject to change without notice. Finished area and room dimensions will change depending on front elevation selection. E.A.O.E. 2024

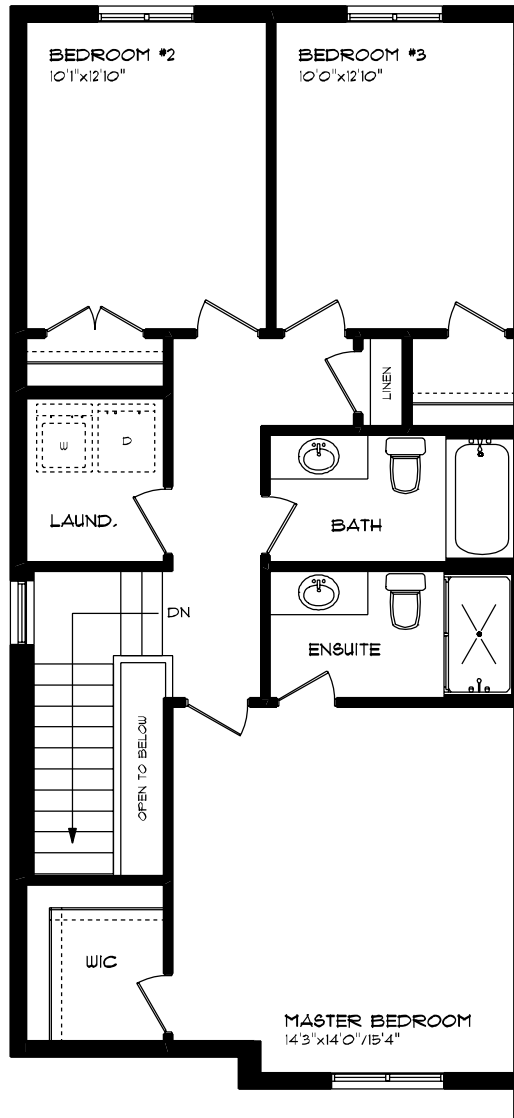
CREATED MAR. 2024



SHELTON (ESSENTIAL SPECS)
LOT 49A (#15) HEMLOCK CRESCENT
MAIN FLOOR PLAN
9' MAIN FLOOR CEILING
APPROX. 718 SQ. FT.

This plan is the property of Majors Homes and any reproduction of this plan, its concepts or ideas, is strictly prohibited. Plans and notes filed are approximate and are subject to change without notice. Finish area and room dimensions will change depending on front elevation selection. E.A.E. 2024

CREATED MAR, 2024



**SHELTON (ESSENTIAL SPECS)
 LOT 49A (#15) HEMLOCK CRESCENT
 SECOND FLOOR PLAN**

APPROX. 861 SQ. FT.

This plan is the property of Bayhse Homes and any reproduction of this plan, its concepts or ideas, is strictly prohibited. Plans and specifications are approximate and are subject to change without notice. Finished areas and room dimensions will change depending on final elevation selection. E.A.O.E. 2024

CREATED MAR. 2024