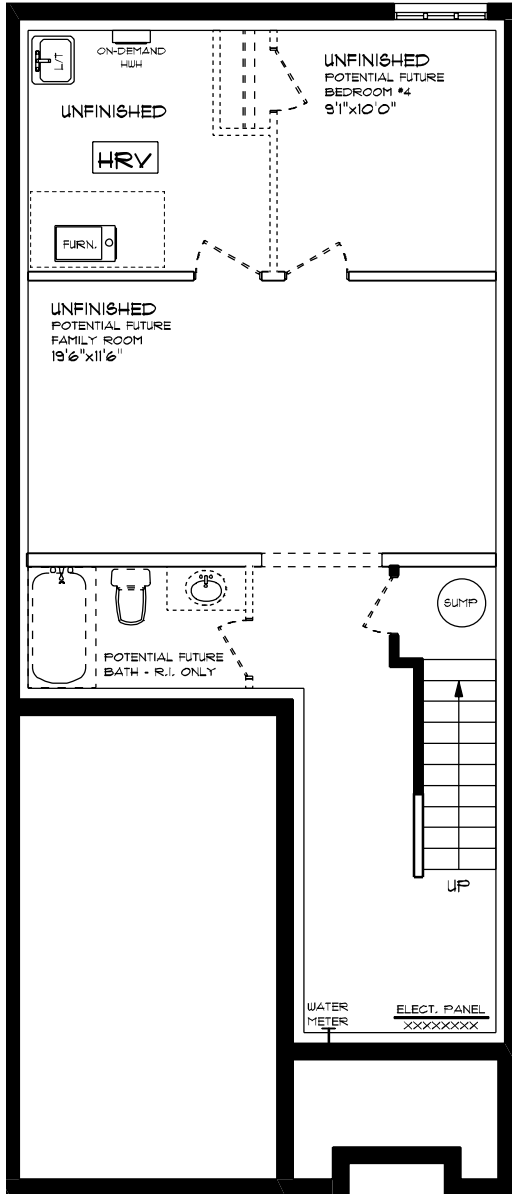




**SHELTON (ESSENTIAL SPECS)  
LOT 49B (#13) HEMLOCK CRESCENT  
FRONT ELEVATION  
9' MAIN FLOOR CEILING  
APPROX. 1,645 SQ. FT.**

This plan is the property of i-Alpha Homes and any reproduction of this plan, its concepts or ideas, is strictly prohibited. Plans and specifications are approximate and are subject to change without notice. Finished area and room dimensions will change depending on front elevation selection. E.A.O.E. 2024

CREATED MAR. 2024

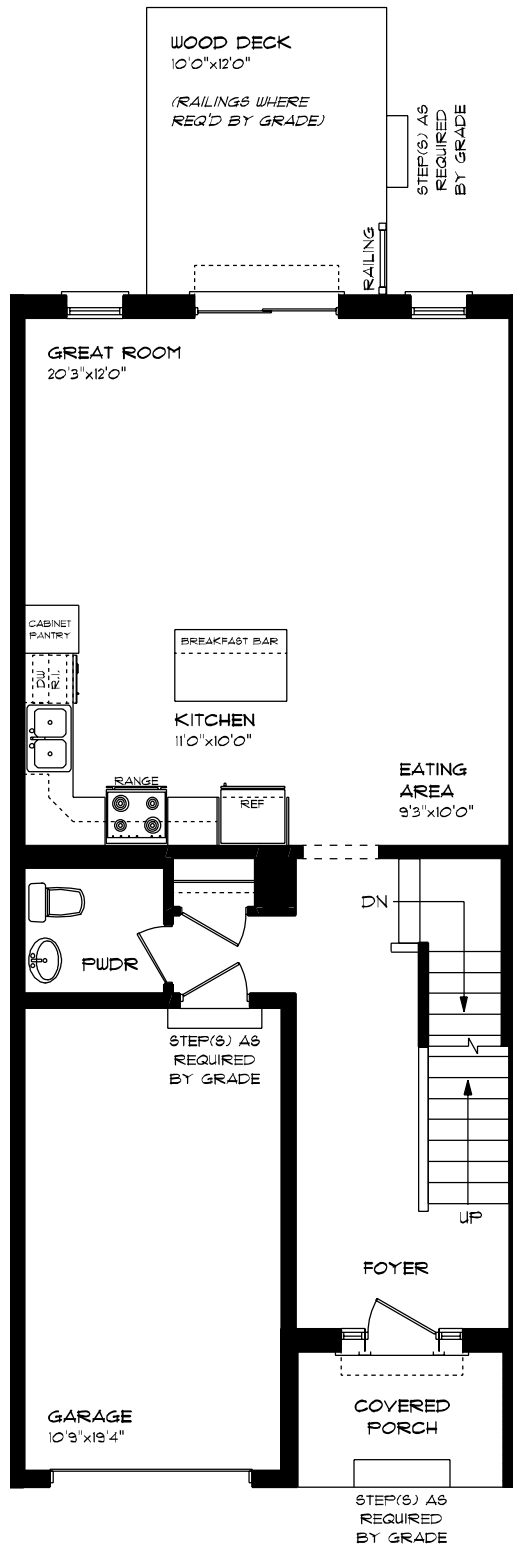


SHELTON (ESSENTIAL SPECS)  
 LOT 49B (#13) HEMLOCK CRESCENT  
 LOWER LEVEL PLAN

UNFINISHED

This plan is the property of Hughes Homes and any reproduction of this plan, its concepts or ideas, is strictly prohibited. Plans and specifications are approximate and are subject to change without notice. Finished area and room dimensions will change depending on front elevation selection. E.40.E, 2014

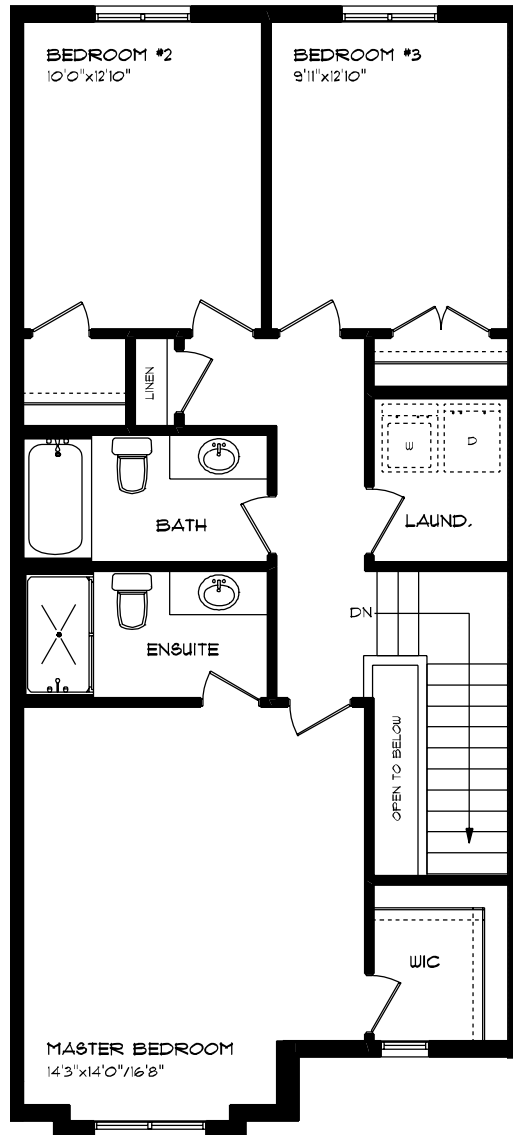
CREATED: MAR, 2014



**SHELTON (ESSENTIAL SPECS)  
 LOT 49B (#13) HEMLOCK CRESCENT  
 MAIN FLOOR PLAN  
 9' MAIN FLOOR CEILING  
 APPROX. 165 SQ. FT.**

This plan is the property of Higgins Homes and any reproduction of this plan, its concepts or details, is strictly prohibited. Plans and specifications are approximate and are subject to change without notice. Finished area and room dimensions will change depending on front elevation selection. E40.E, 2014

CREATED: MAR, 2014



**SHELTON (ESSENTIAL SPECS)  
 LOT 49B (#13) HEMLOCK CRESCENT  
 SECOND FLOOR PLAN**

**APPROX. 880 SQ. FT.**

This plan is the property of H&H Home Homes and any reproduction of this plan, its excerpts or ideas, is strictly prohibited. Plans and specifications are approximate and are subject to change without notice. Finished area and room dimensions will change depending on front elevation selection. E.A.O.E. 2024

CREATED MAR. 2024