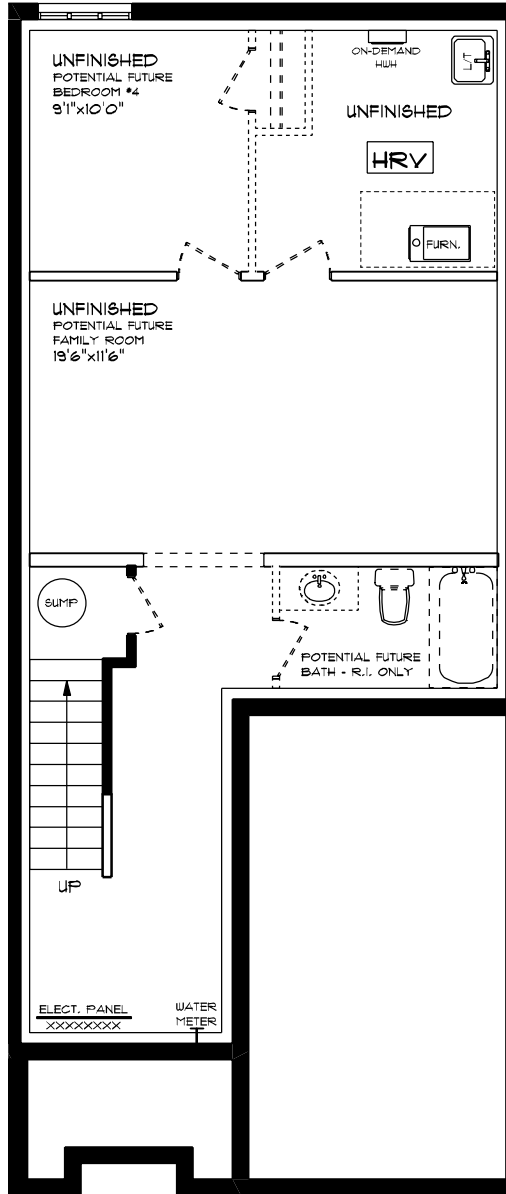




**SHELTON (ESSENTIAL SPECS)  
LOT 49C (#11) HEMLOCK CRESCENT  
FRONT ELEVATION  
9' MAIN FLOOR CEILING  
APPROX. 1,645 SQ. FT.**

This plan is the property of H&H Homes and any reproduction of this plan, its concepts or ideas, is strictly prohibited. Plans and specifications are approximate and are subject to change without notice. Finished area and room dimensions will change depending on front elevation selection. E.42.E. 2024

CREATED MAR. 2024

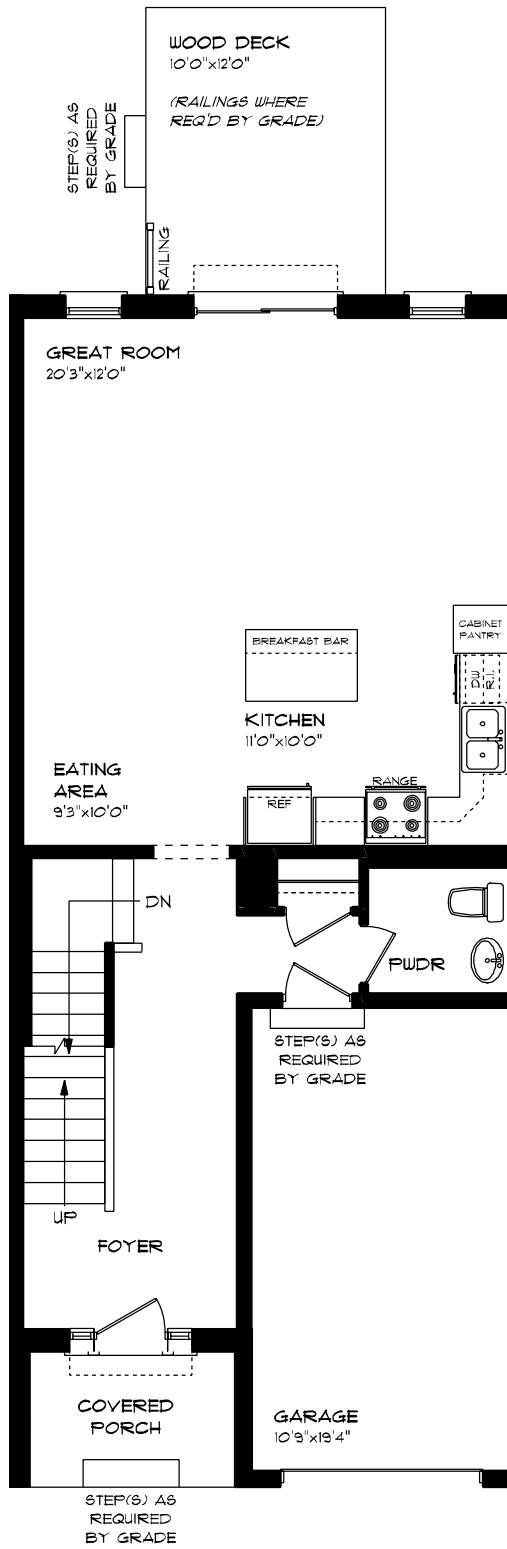


SHELTON (ESSENTIAL SPECS)  
 LOT 49C (#11) HEMLOCK CRESCENT  
 LOWER LEVEL PLAN

UNFINISHED

This plan is the property of Highrise Homes and any reproduction of this plan, its excerpts or copies, is strictly prohibited. Floor and elevation callouts are approximate and are subject to change without notice. Finished area and room dimensions will change depending on front elevation selection. E.A.O.E. 2024

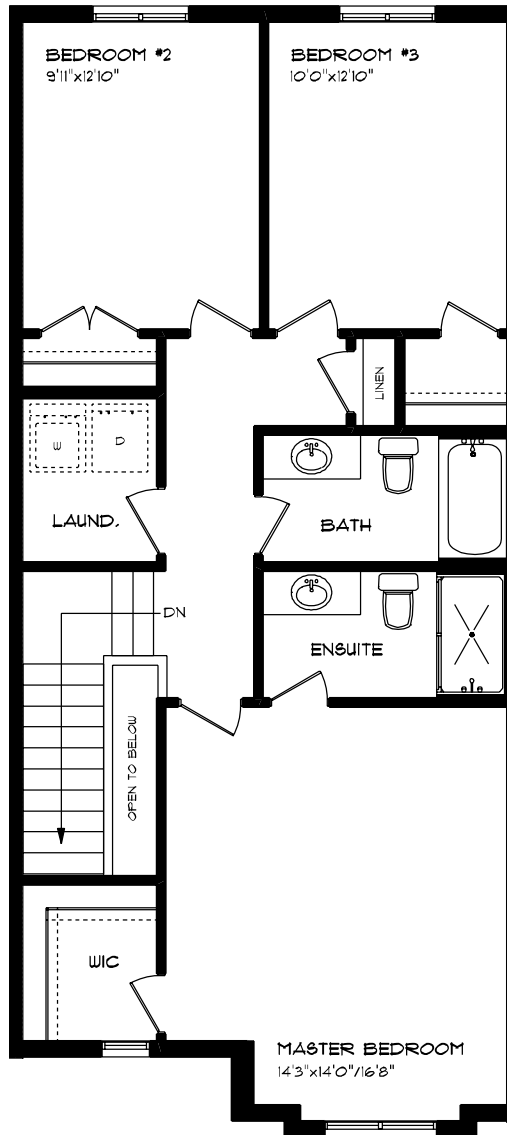
CREATED MAR, 2024



**SHELTON (ESSENTIAL SPECS)  
 LOT 49C (#11) HEMLOCK CRESCENT  
 MAIN FLOOR PLAN  
 9' MAIN FLOOR CEILING  
 APPROX. 165 SQ. FT.**

This plan is the property of Highline Homes and any reproduction of this plan, its excerpts or ideas, is strictly prohibited. Floor and ceiling heights are approximate and are subject to change without notice. Finished area and room dimensions will change depending on front elevation selection. E.A.O.E. 2024

CREATED MAR. 2024



SHELTON (ESSENTIAL SPECS)  
 LOT 49C (#11) HEMLOCK CRESCENT  
 SECOND FLOOR PLAN

APPROX. 880 SQ. FT.

This plan is the property of HOKIHOE Homes and any reproduction of this plan, its concepts or ideas, is strictly prohibited. Plans and specifications are approximate and are subject to change without notice. Finished area and room dimensions will change depending on front elevation selection. E.A.O.E. 2024

CREATED MAR. 2024