

INVENTORY HOME



9 DUNNING WAY

ORCHARD PARK MEADOWS, ST. THOMAS

THE DETAILS

PRICE	\$ 799,000
CLOSING DATE	APPROX. 275 DAYS
LOT NUMBER	5
BEDROOMS	3
BATHS	3
SQFT	2209
GARAGE	2
MODEL	HAMILTON

HAYHOE™
— HOMES —



SALES PROFESSIONAL

DAVE MATTHEWS

519.633.9215

dave.matthews@hayhoehomes.com

SITE PLAN

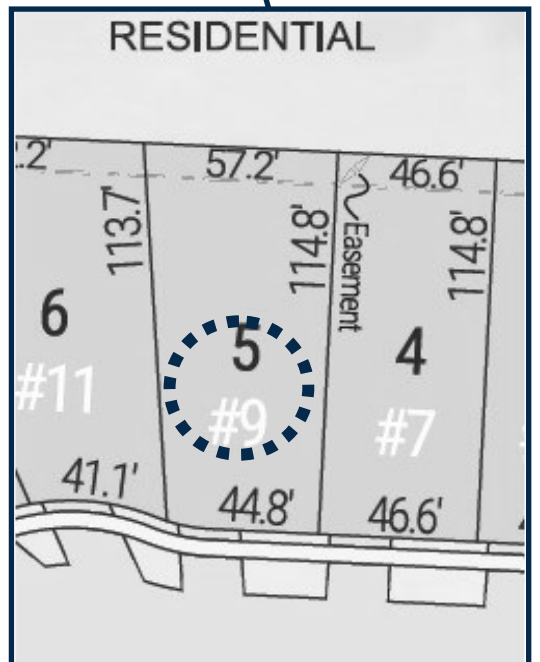


9 DUNNING

EXTERIOR FEATURES:

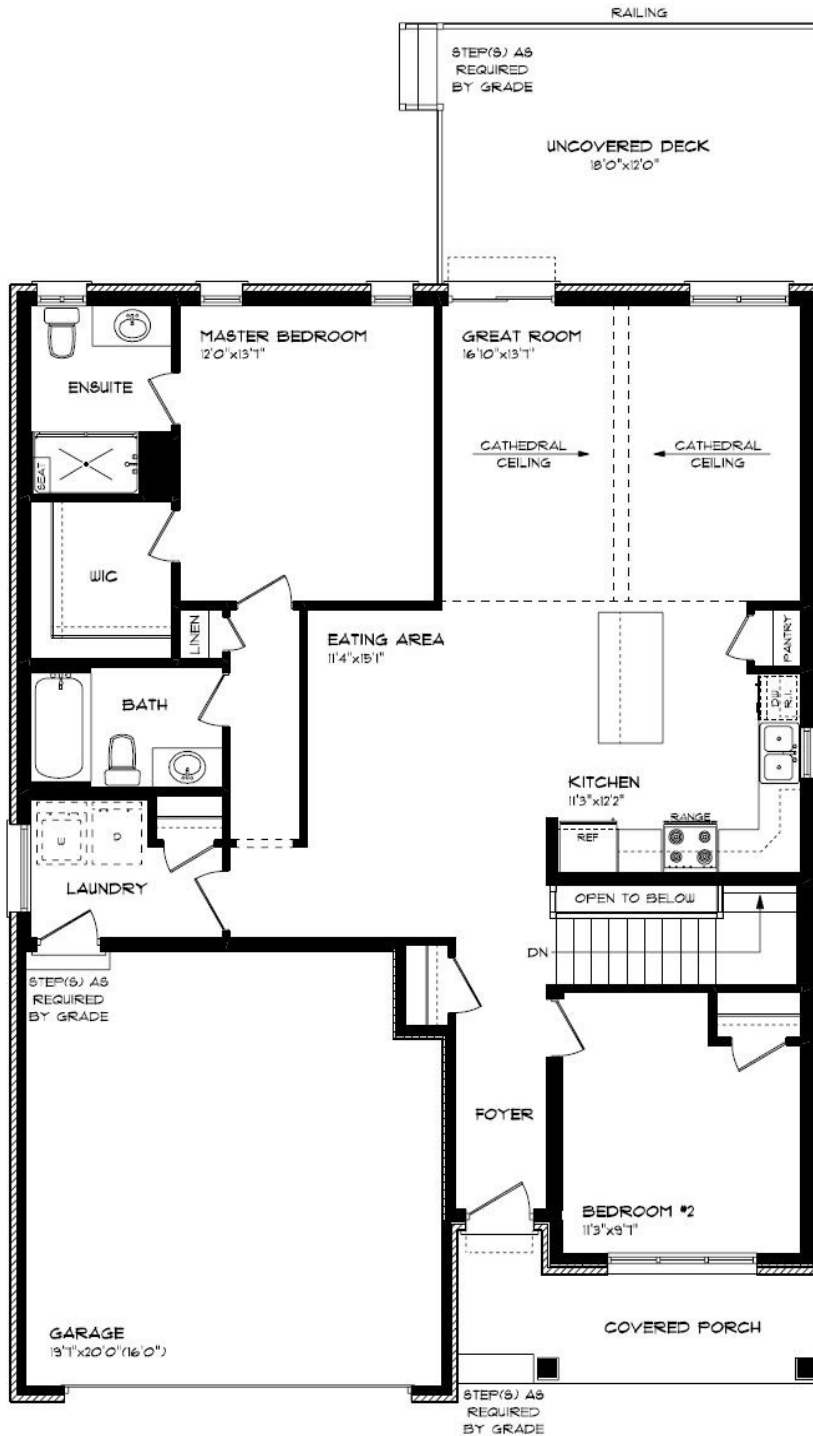
- KEYLESS ENTRY
- TREATED WOOD DECK
- BBQ GAS LINE
- ASPHALT DRIVEWAY
- WALKING TRAILS

HAYHOE™
HOMES



MAIN FLOOR

9 DUNNING WAY, ST. THOMAS



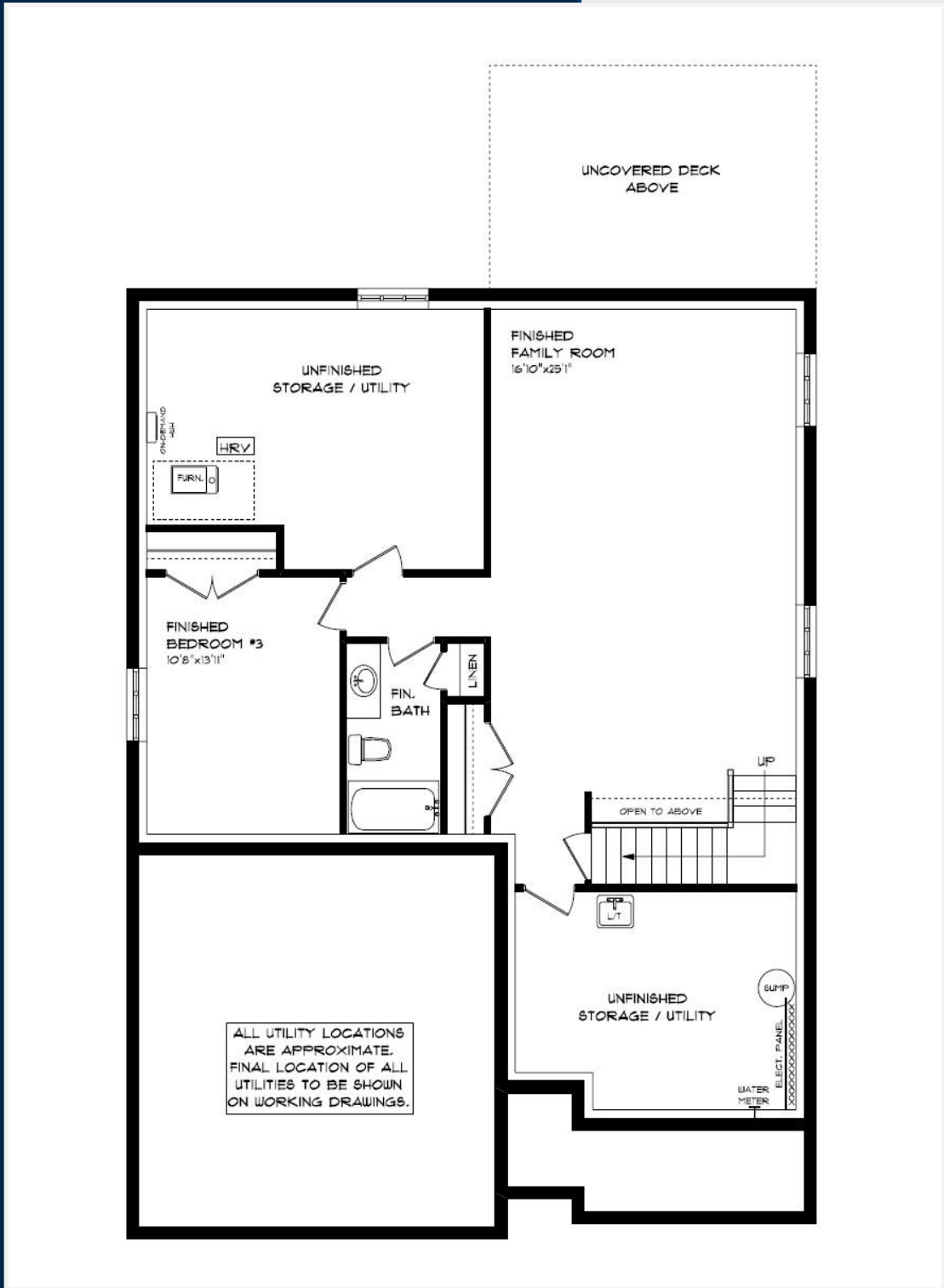
- DOUBLE CAR GARAGE
- KITCHEN ISLAND
- LVP FLOORING
- QUARTZ COUNTERTOPS
- CATHEDRAL CEILING
- KITCHEN BACKSPLASH

MAIN FLOOR:
APPROX 1423 SQFT

HAYHOE™
— HOMES —

BASEMENT

9 DUNNING WAY, ST. THOMAS



BASEMENT:
APPROX 786 SQFT

- FINISHED FAMILY ROOM & BATH
- AIR CONDITIONING
- GAS FURNACE WITH HRV
- FLOW-THROUGH HUMIDIFIER
- NEW HOME WARRANTY



EXTERIOR FINISHES

SHINGLES



9 Dunning Way



SIDING

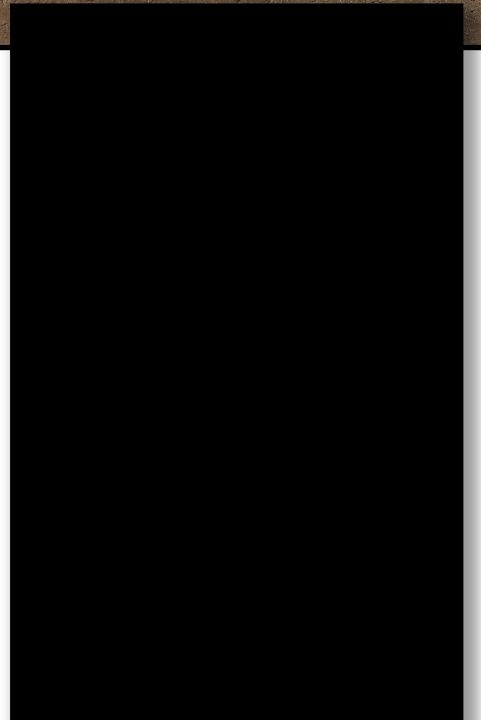
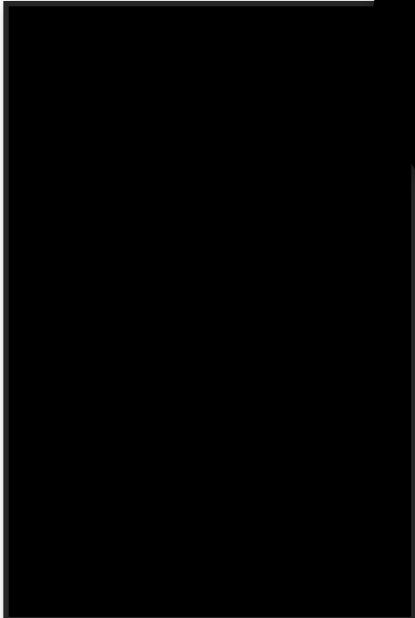


FRONT
DOOR

BRICK

WINDOWS

GARAGE DOOR



ALUMINUM

HAYHOE™
— HOMES —

INTERIOR FINISHES

9 Dunning Way

QUARTZ KITCHEN PERIMETER
COUNTERTOPS

KITCHEN BACKSPLASH



QUARTZ KITCHEN ISLAND
COUNTERTOPS



LUXURY VINYL PANK

PAINT
COLOUR



WOOD STAINED
KITCHEN PERIMETER
LOWERS



PAINTED KITCHEN
ISLAND AND UPPERS



HAYHOE™
HOMES

INTERIOR FINISHES

9 Dunning Way

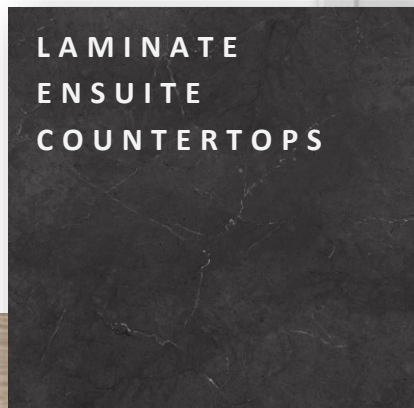
INTERIOR DOOR STYLE



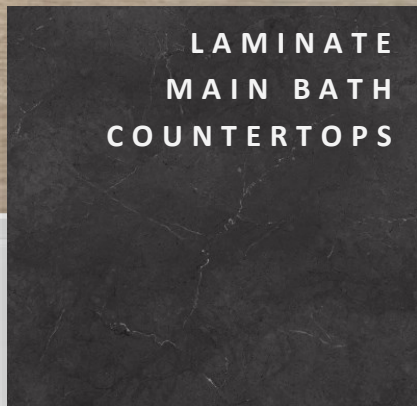
PAINTED
ENSUITE
CABINETS



LAMINATE
ENSUITE
COUNTERTOPS



LAMINATE
MAIN BATH
COUNTERTOPS



PAINTED
MAIN BATH
CABINETS



HAYHOE™
— HOMES —

LUXURY VINYL
PLANK