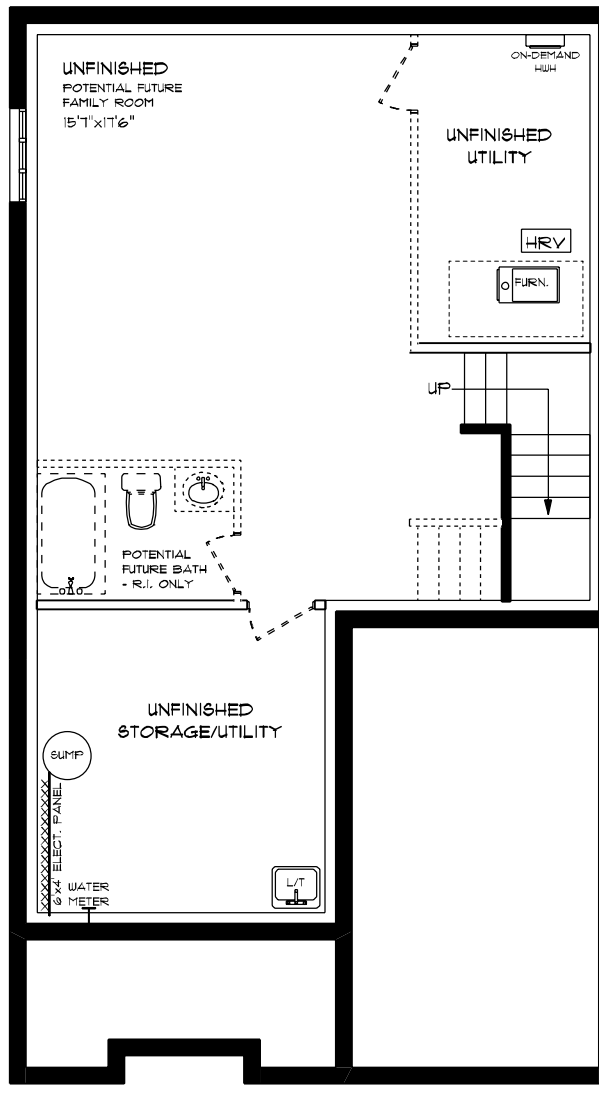




ATMORE (ESSENTIAL SPECS)
LOT 50A (#21) HEMLOCK CRESCENT
FRONT ELEVATION
9' MAIN FLOOR CEILING
APPROX. 1,180 TOTAL SQ. FT.

This plan is the property of H&J Home Homes and any reproduction of this plan, its concepts or ideas, is strictly prohibited. Plans and specifications are approximate and are subject to change without notice. Finished area and room dimensions will change depending on front elevation selection. E.A.O.E. 2024

CREATED MAR. 2024

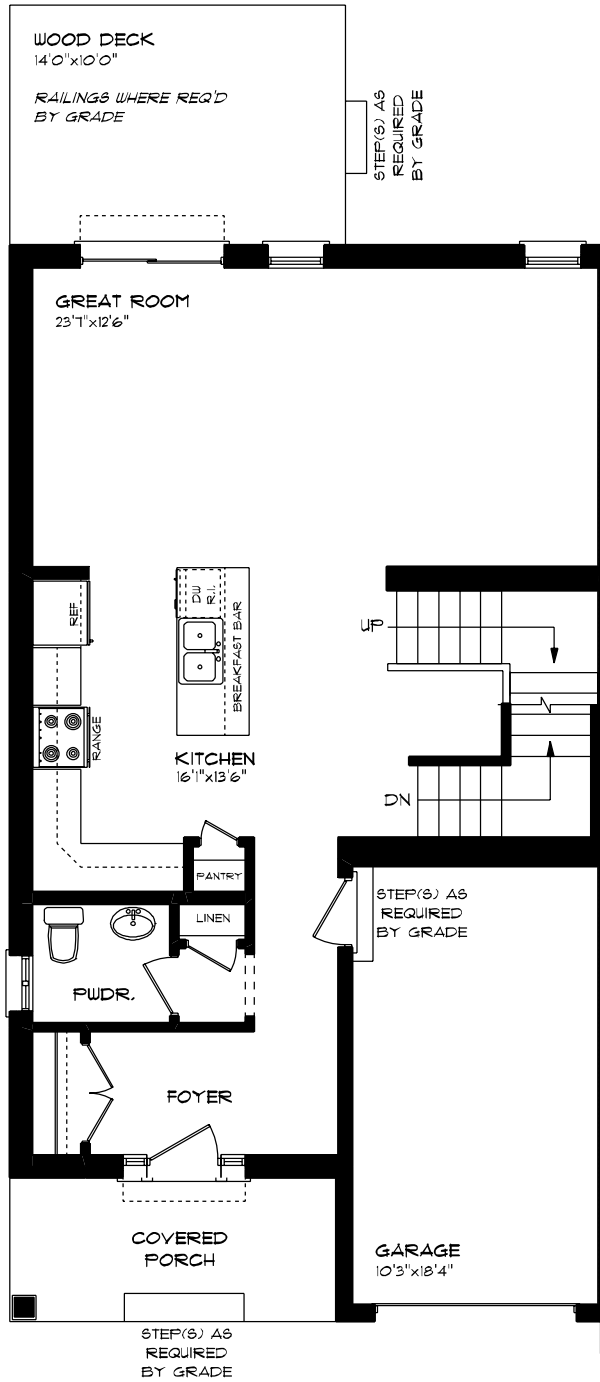


ATMORE (ESSENTIAL SPECS)
LOT 50A (#21) HEMLOCK CRESCENT
LOWER LEVEL PLAN

UNFINISHED

This plan is the property of Haywood Homes and any reproduction of this plan, its concepts or ideas, is strictly prohibited. Plans and specifications are approximate and are subject to change without notice. Finished area and room dimensions will change depending on front elevation selection. E.40.E. 2024

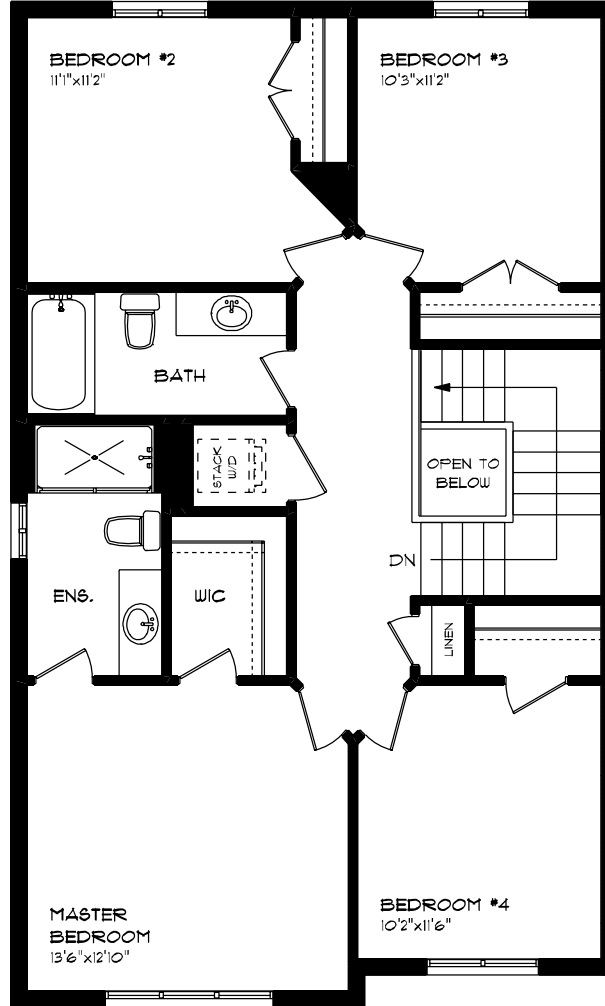
CREATED: MAR, 2024



ATMORE (ESSENTIAL SPECS)
LOT 50A (#21) HEMLOCK CRESCENT
MAIN FLOOR PLAN
9' MAIN FLOOR CEILING
APPROX. 830 SQ. FT.

This plan is the property of Hayhoe Homes and any reproduction of this plan, its concepts or ideas, is strictly prohibited. Plans and specifications are approximate and are subject to change without notice. Finished area and room dimensions will change depending on front elevation selection. E.A.O.E. 2024

CREATED MAR, 2024



**ATMORE (ESSENTIAL SPECS)
 LOT 50A (#21) HEMLOCK CRESCENT
 SECOND FLOOR PLAN**

APPROX. 950 SQ. FT.

This plan is the property of Hajjoo Homes and any reproduction of this plan, its concepts or ideas, is strictly prohibited. Plans and specifications are approximate and are subject to change without notice. Finished area and room dimensions will change depending on front elevation selection. E.A.O.E., 2024

CREATED: MAR, 2024