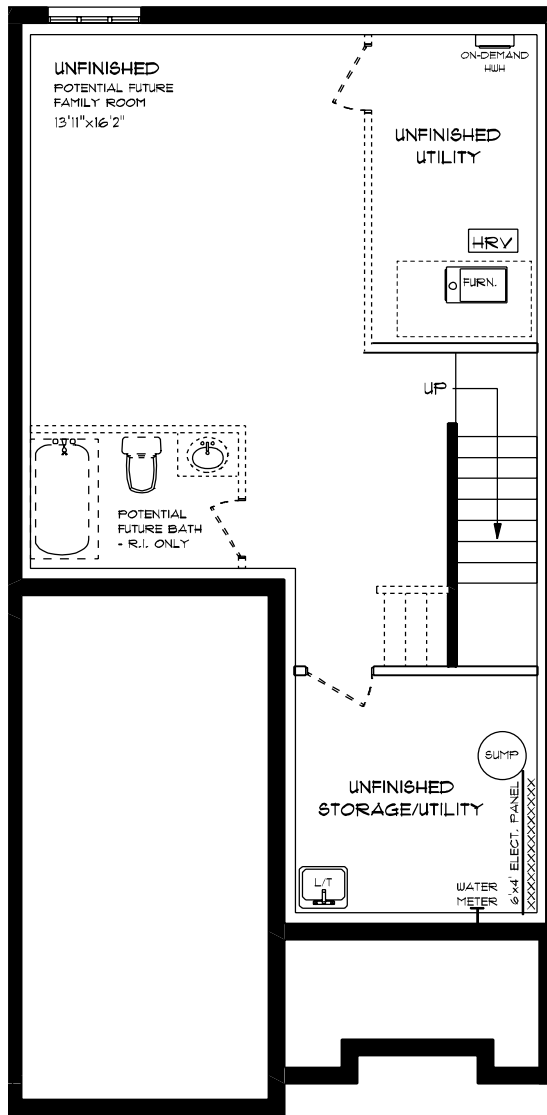




ATMORE (ESSENTIAL SPECS)
LOT 50B (#25) HEMLOCK CRESCENT
FRONT ELEVATION
9' MAIN FLOOR CEILING
APPROX. 1,564 TOTAL SQ. FT.

This plan is the property of H-alpha Homes and any reproduction of this plan, its concepts or ideas, is strictly prohibited. Plans and specifications are approximate and are subject to change without notice. Finished area and room dimensions will change depending on front elevation selection. EAO.E. 2024

CREATED MAR. 2024

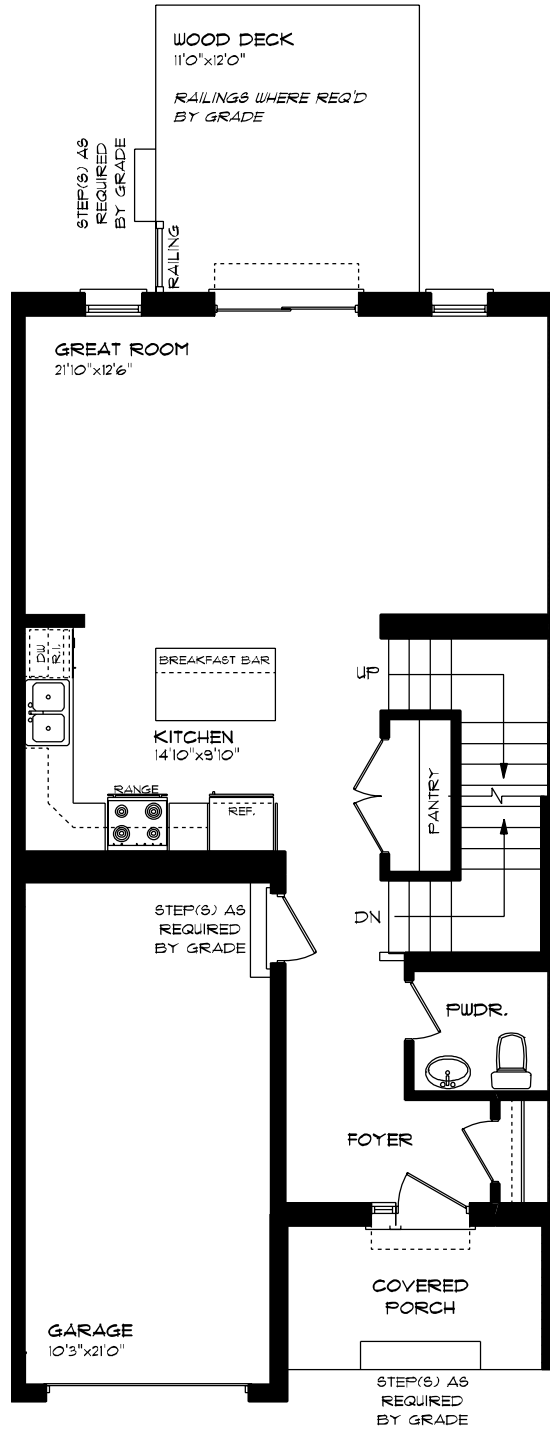


**ATMORE (ESSENTIAL SPECS)
 LOT 50B (#25) HEMLOCK CRESCENT
 LOWER LEVEL PLAN**

UNFINISHED

This plan is the property of Hayhoe Homes and any reproduction of this plan, its concepts or ideas, is strictly prohibited. Plans and specs filed are approximate and are subject to change without notice. Finished area and room dimensions will change depending on front elevation selection.

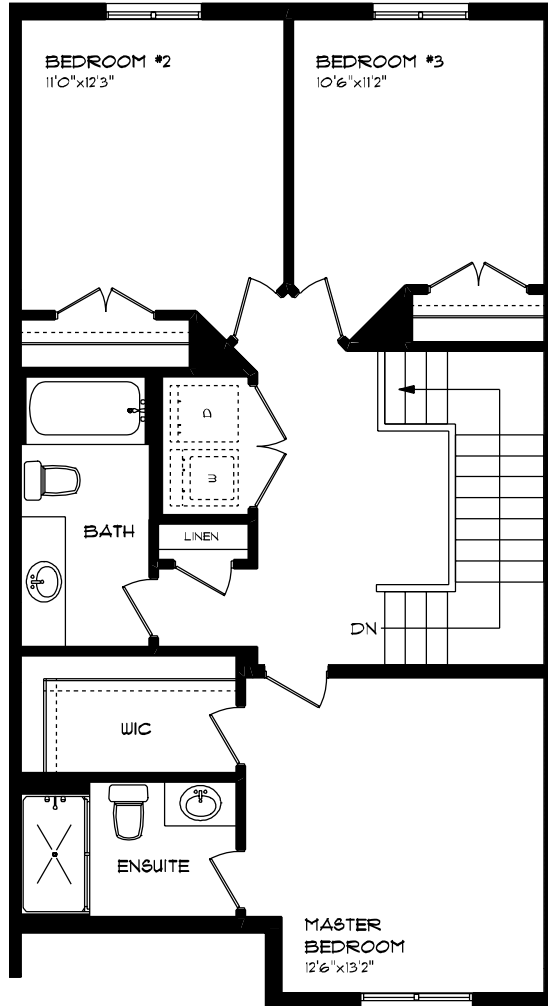
CREATED MAR. 2024



ATMORE (ESSENTIAL SPECS)
LOT 50B (#25) HEMLOCK CRESCENT
MAIN FLOOR PLAN
9' MAIN FLOOR CEILING
APPROX. 125 SQ. FT.

This plan is the property of Hyllos Homes and any reproduction of this plan, its concepts or ideas, is strictly prohibited. Plans and specifications are approximate and are subject to change without notice. Finished area and room dimensions will change depending on front elevation selection. E40.E, 2024

CREATED MAR. 2024



**ATMORE (ESSENTIAL SPECS)
 LOT 50B (#25) HEMLOCK CRESCENT
 SECOND FLOOR PLAN**

APPROX. 839 SQ. FT.

This plan is the property of i-ajoba Homes and any reproduction of this plan, its concepts or ideas, is strictly prohibited. Plans and specifications are approximate and are subject to change without notice. Finished area and room dimensions will change depending on front elevation selection.

CREATED: MAR, 2020