

WILLOW RUN

23 HEMLOCK CRESCENT

AYLMER | ONTARIO

TOWNHOME



THE DETAILS

PRICE	\$499,000
CLOSING DATE	April 15, 2025
LOT NUMBER	50C
BEDROOMS	3
BATHS	2.5
GARAGE	1
DRIVEWAY	17'
SQ FT	1,548
MODEL	Townhome

Emma Smith SALES PROFESSIONAL

519.409.1474 | emma.smith@hayhoehomes.com



www.HayhoeHomes.com

Price, products, colours & features are subject to change without notice. E. & O. E. NOVEMBER 2024

HAYHOETM
-HOMES-

WILLOW RUN

SITE PLAN

23 HEMLOCK CRESCENT | AYLMER ON



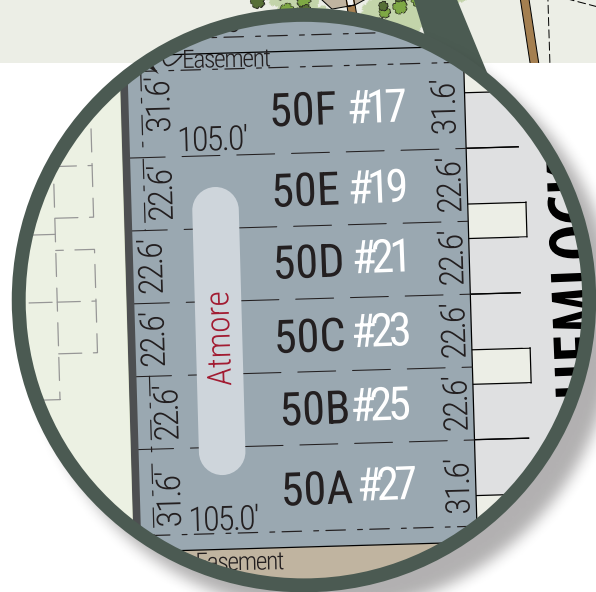
exterior features

KEYLESS ENTRY

TREATED WOOD DECK

ASPHALT DRIVEWAY

WALKING TRAILS



WILLOW RUN

23 HEMLOCK CRESCENT

MAIN FLOOR

725 sq ft

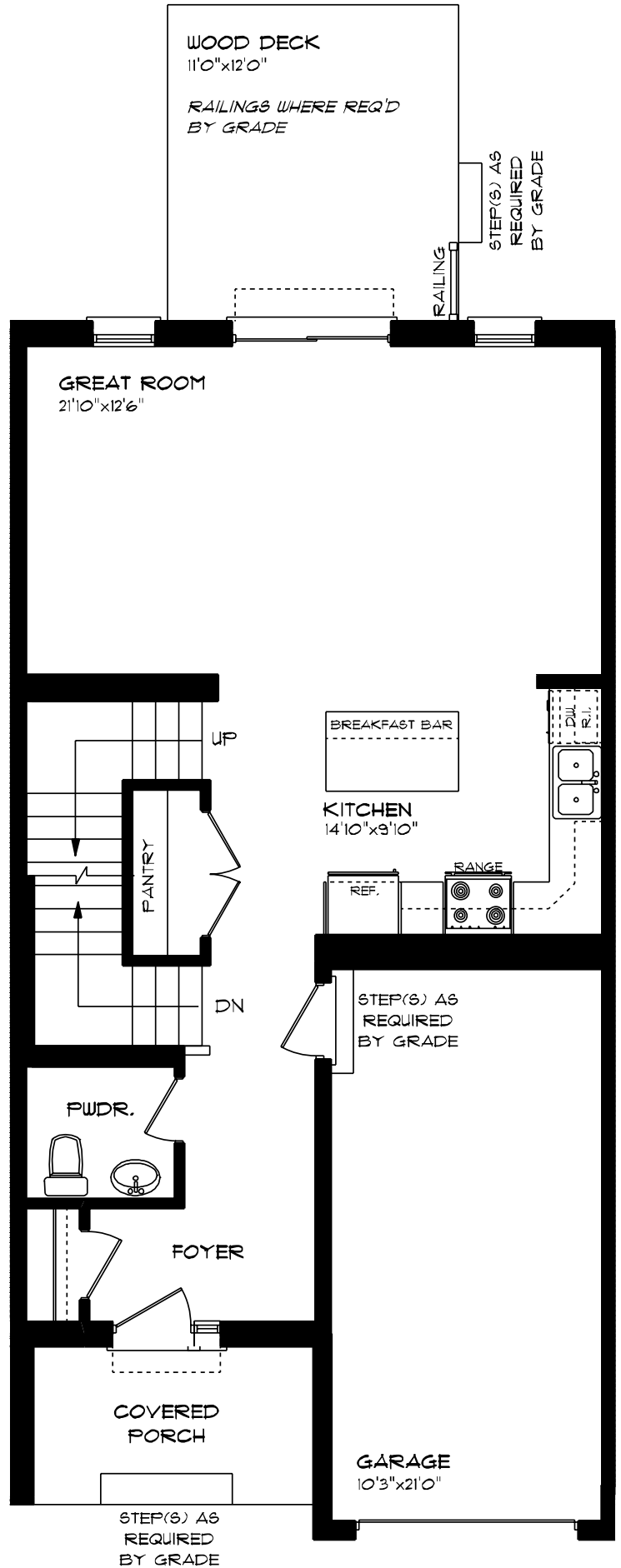
features

QUARTZ COUNTERTOPS

VINYL PLANK FLOORING

KITCHEN ISLAND

9' CEILINGS



WILLOW RUN

23 HEMLOCK CRESCENT

SECOND FLOOR

823 sq ft

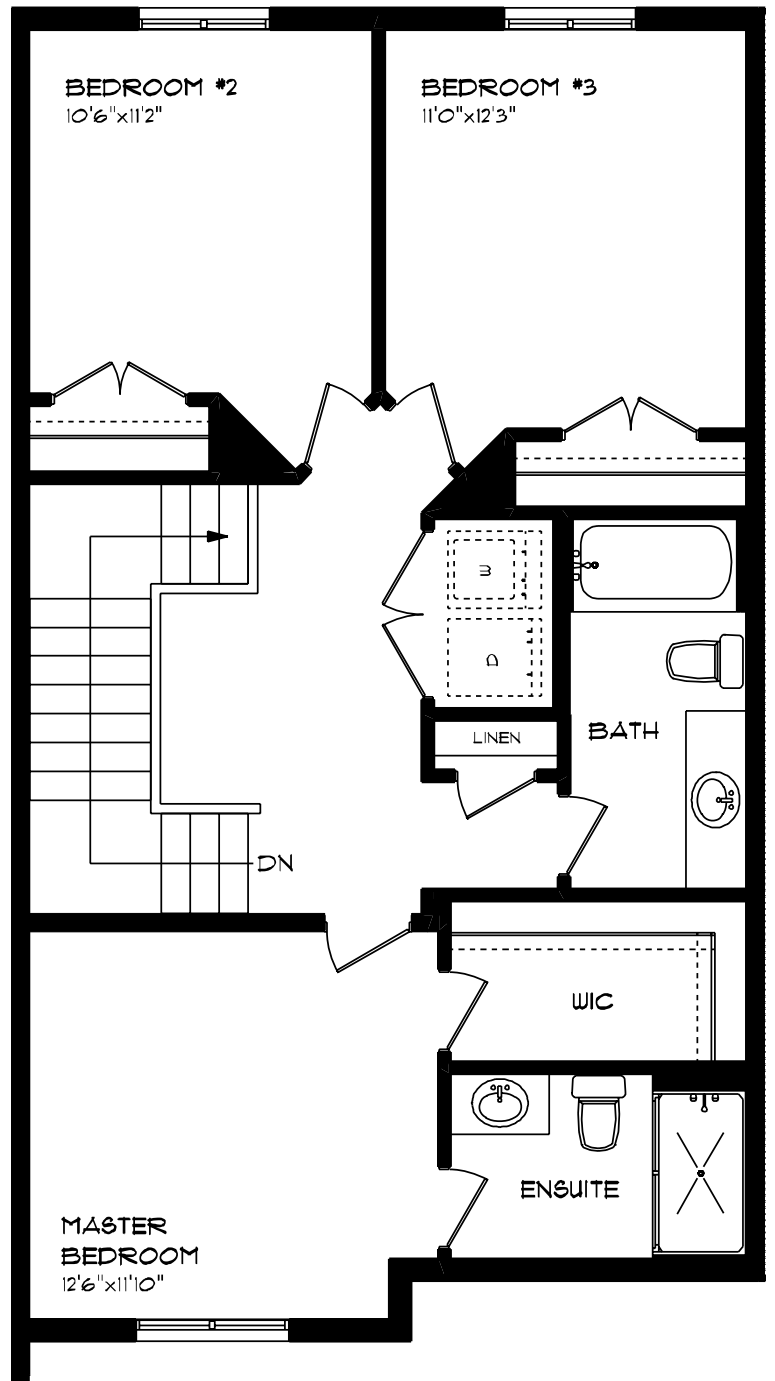
features

PROFESSIONALLY DESIGNED

CARPET FLOORING

VINYL PLANK FLOORING

WALK-IN CLOSET



WILLOW RUN

23 HEMLOCK CRESCENT

LOWER LEVEL UNFINISHED

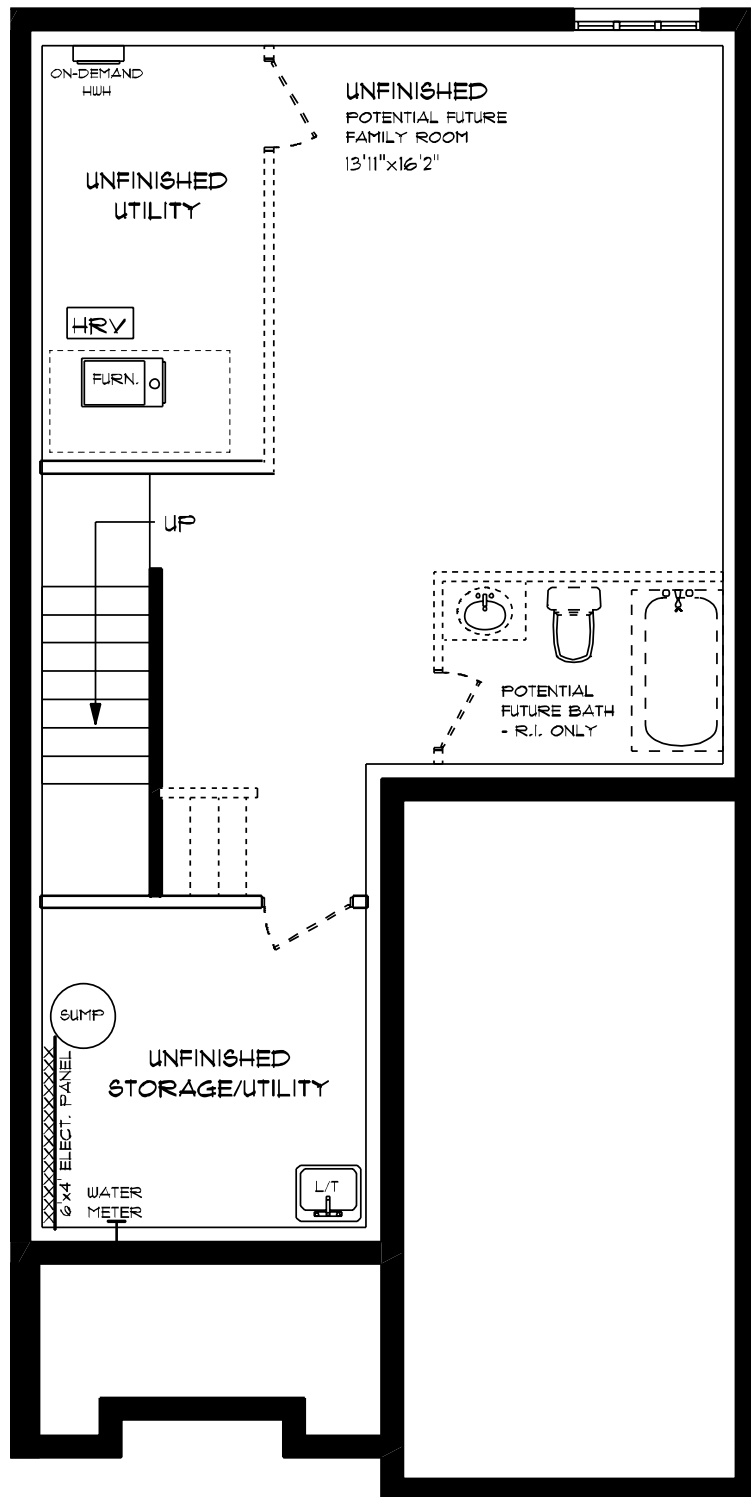
features

AIR CONDITIONING

GAS FURNACE WITH HRV

HUMIDIFIER

NEW HOME WARRANTY



WILLOW RUN

23 HEMLOCK CRESCENT

INTERIOR FINISHES

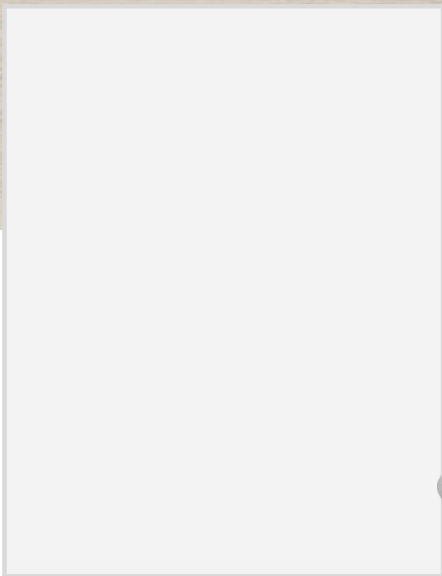


QUARTZ KITCHEN COUNTERTOPS

LUXURY VINYL PLANK



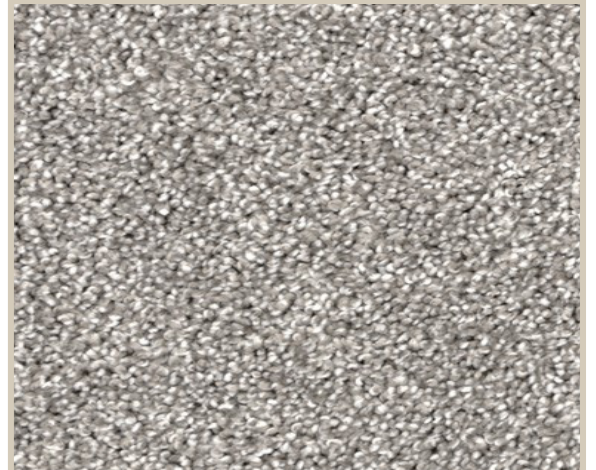
MELAMINE KITCHEN CABINETS



MELAMINE VANITY CABINETS



LAMINATE VANITY COUNTERTOPS



CARPET