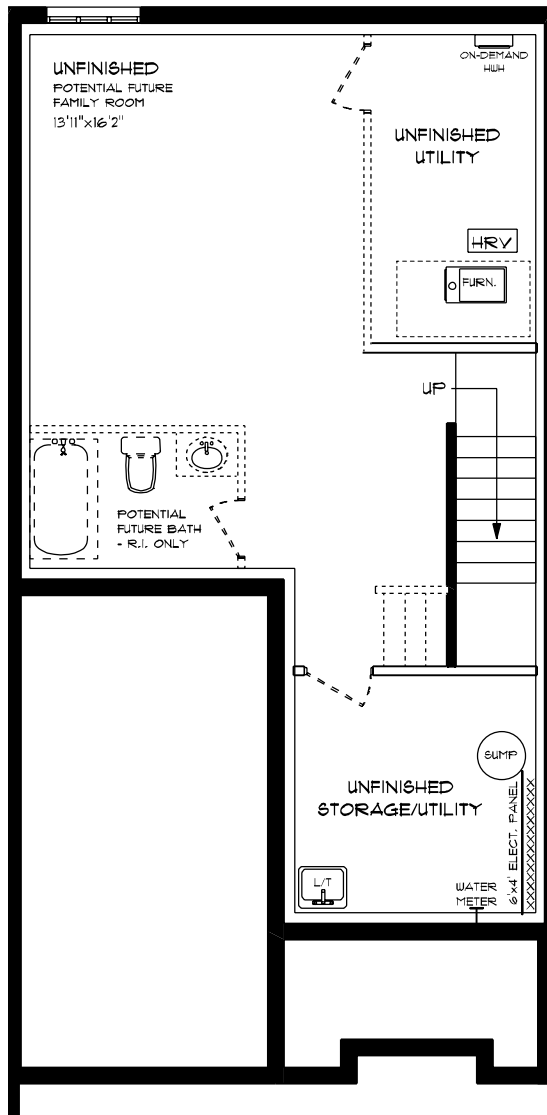




ATMORE (ESSENTIAL SPECS)  
LOT 50D (#21) HEMLOCK CRESCENT  
FRONT ELEVATION  
9' MAIN FLOOR CEILING  
APPROX. 1,548 TOTAL SQ. FT.

This plan is the property of Highline Homes and any reproduction of this plan, its concepts or ideas, is strictly prohibited. Plans and specifications are approximate and are subject to change without notice. Finished area and room dimensions will change depending on front elevation selection. E40.E, 2024

CREATED MAR, 2024

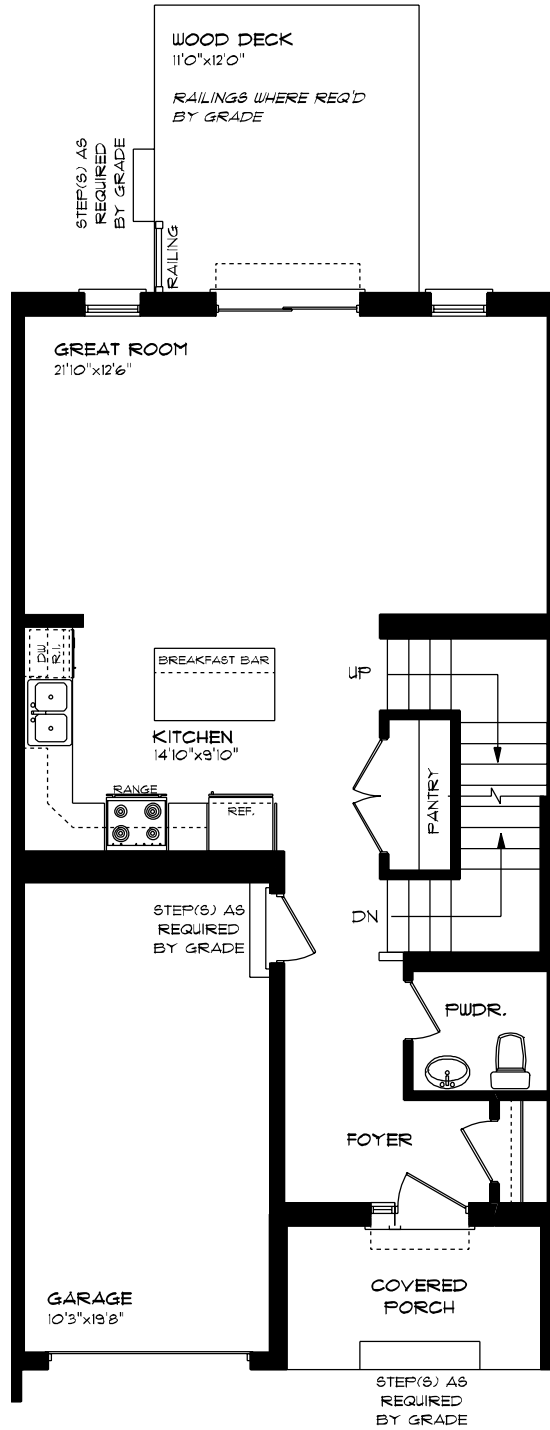


ATMORE (ESSENTIAL SPECS)  
 LOT 50D (#21) HEMLOCK CRESCENT  
 LOWER LEVEL PLAN

UNFINISHED

This plan is the property of Mayhew Homes and any reproduction of this plan, its concepts or ideas, is strictly prohibited. Plans and specifications are approximate and are subject to change without notice. Finished area and room dimensions will change depending on front elevation selection.

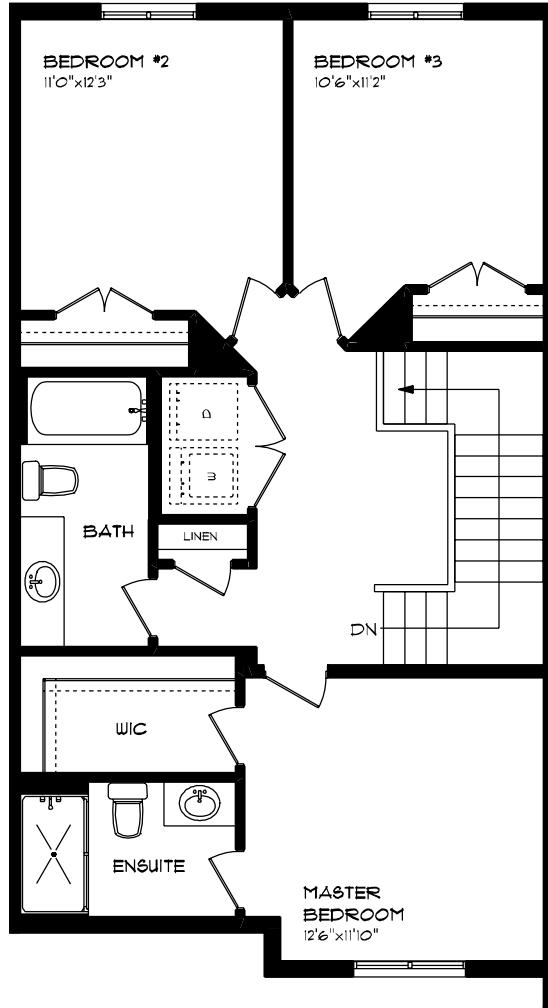
CREATED MAR, 2024



**ATMORE (ESSENTIAL SPECS)**  
**LOT 50D (#21) HEMLOCK CRESCENT**  
**MAIN FLOOR PLAN**  
**9' MAIN FLOOR CEILING**  
**APPROX. 725 SQ. FT.**

This plan is the property of Mayhew Homes and any reproduction of this plan, its concepts or ideas, is strictly prohibited. Plans and specs from one are approximate and are subject to change without notice. Finished area and room dimensions will change depending on front elevation selection. E.40.E. 2024

CREATED MAR. 2024



**ATMORE (ESSENTIAL SPEC8)  
 LOT 50D (#21) HEMLOCK CRESCENT  
 SECOND FLOOR PLAN**

**APPROX. 823 SQ. FT.**

This plan is the property of H&H Home Homes and any reproduction of this plan, its concepts or ideas, is strictly prohibited. Plans and specifications are approximate and are subject to change without notice. Finished area and room dimensions will change depending on front elevation selection.

CREATED: MAR, 2024