

WILLOW RUN

21 HEMLOCK CRESCENT

AYLMER | ONTARIO

TOWNHOME



THE DETAILS

PRICE	\$499,000
CLOSING DATE	April 16, 2025
LOT NUMBER	50D
BEDROOMS	3
BATHS	2.5
GARAGE	1
DRIVEWAY	17'
SQ FT	1,548
MODEL	Townhome

Emma Smith SALES PROFESSIONAL

519.409.1474 | emma.smith@hayhoehomes.com



www.HayhoeHomes.com

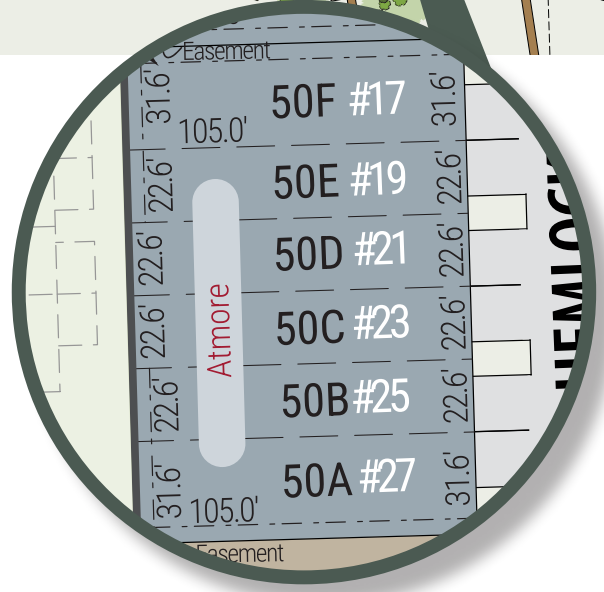
Price, products, colours & features are subject to change without notice. E. & O. E. NOVEMBER 2024

HAYHOE[™]
-HOMES-

WILLOW RUN

SITE PLAN

21 HEMLOCK CRESCENT | AYLMER ON



exterior features

- KEYLESS ENTRY
- TREATED WOOD DECK
- ASPHALT DRIVEWAY
- WALKING TRAILS

WILLOW RUN

21 HEMLOCK CRESCENT

MAIN FLOOR

725 sq ft

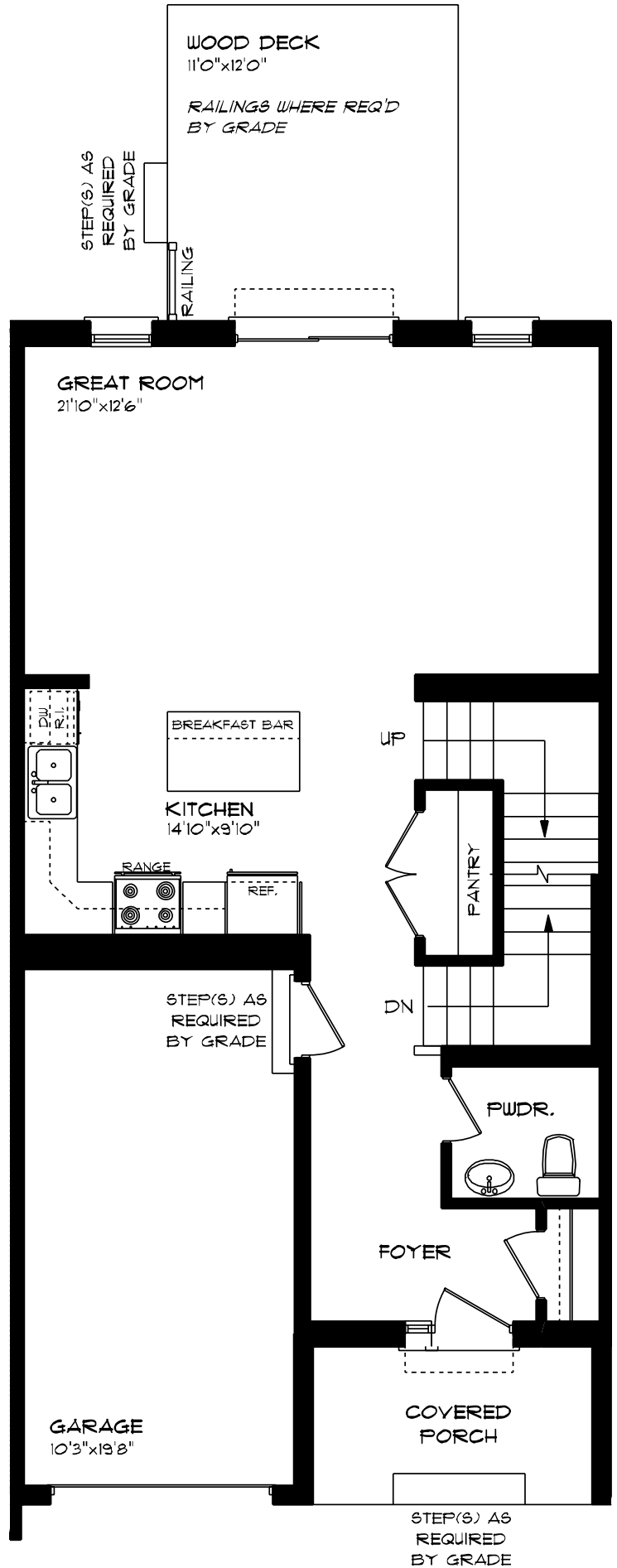
features

QUARTZ COUNTERTOPS

VINYL PLANK FLOORING

KITCHEN ISLAND

9' CEILINGS



WILLOW RUN

21 HEMLOCK CRESCENT

SECOND FLOOR

823 sq ft

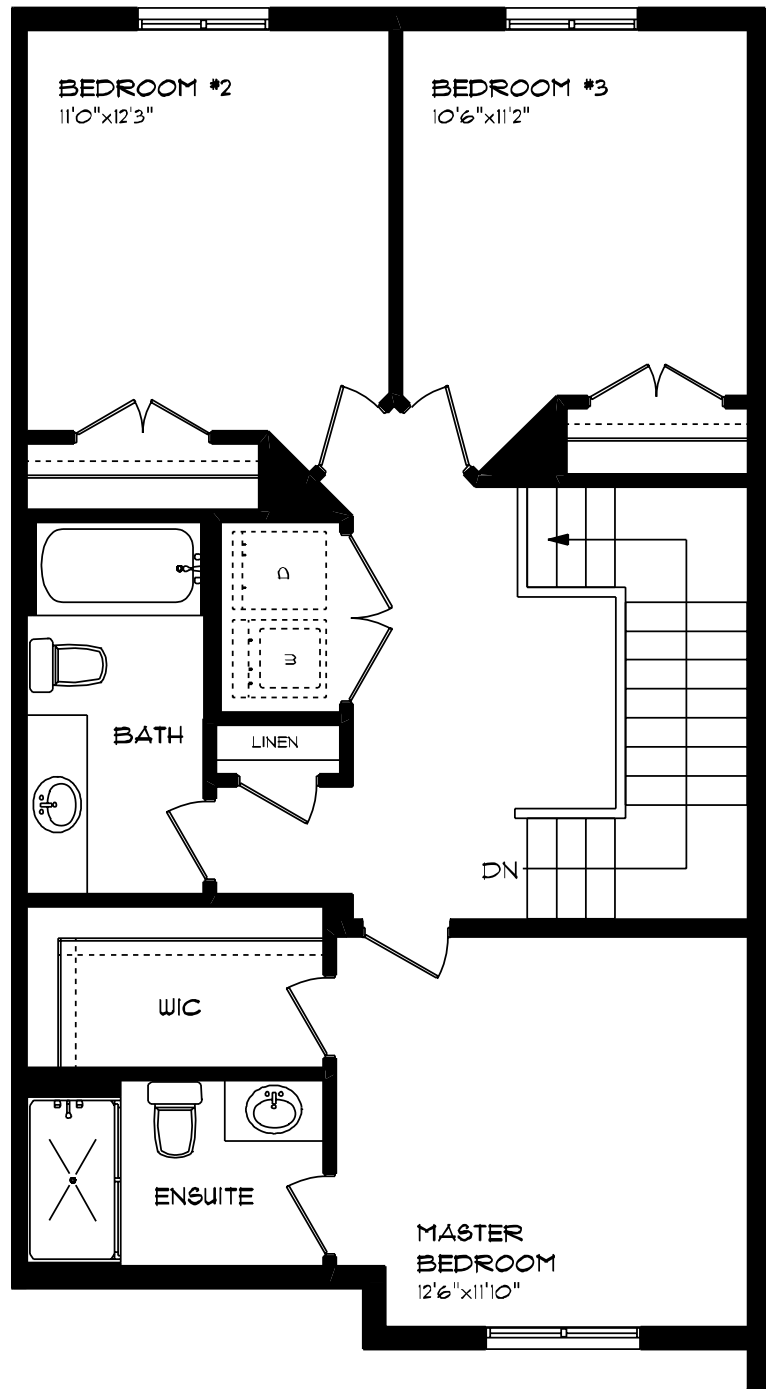
features

PROFESSIONALLY DESIGNED

CARPET FLOORING

VINYL PLANK FLOORING

WALK-IN CLOSET



WILLOW RUN

21 HEMLOCK CRESCENT

LOWER LEVEL UNFINISHED

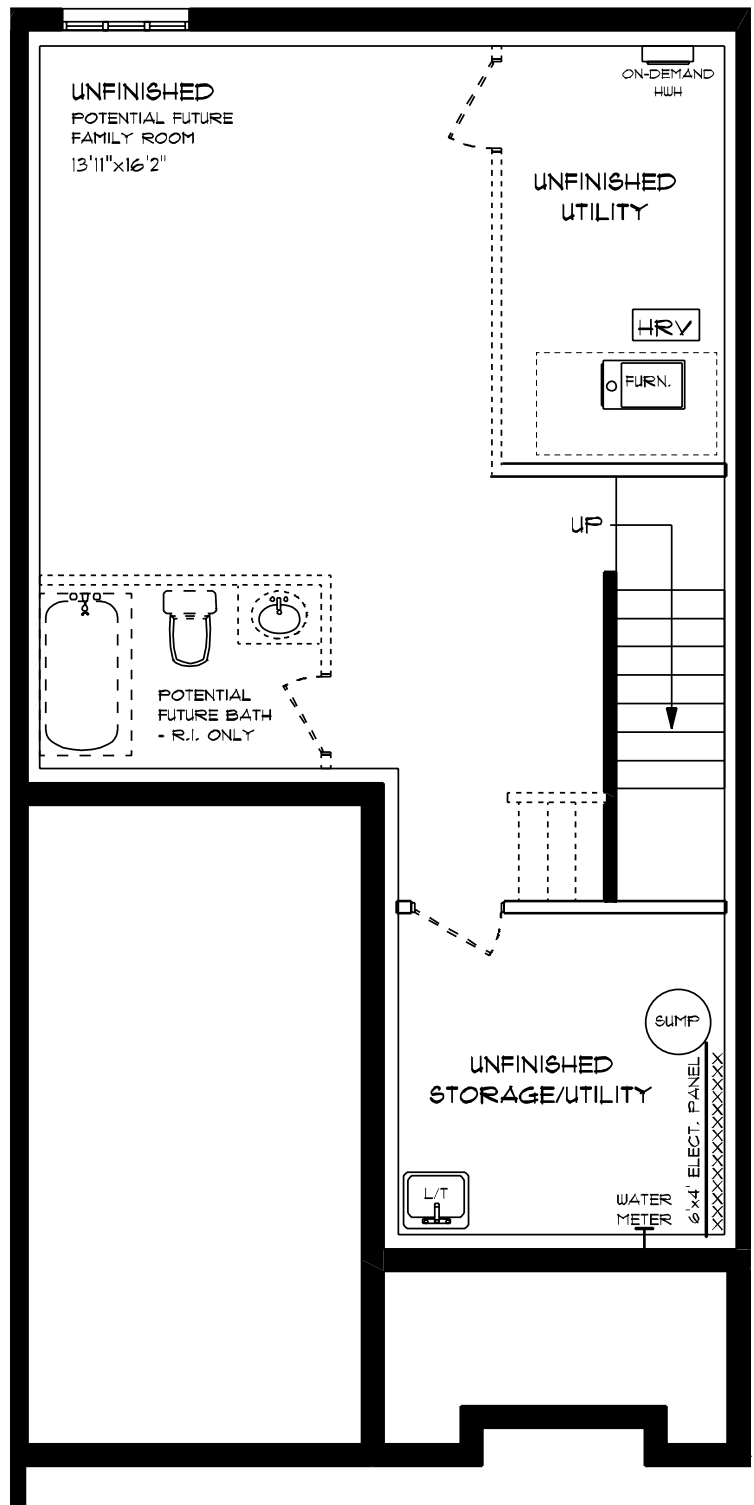
features

AIR CONDITIONING

GAS FURNACE WITH HRV

HUMIDIFIER

NEW HOME WARRANTY



WILLOW RUN

21 HEMLOCK CRESCENT

INTERIOR FINISHES

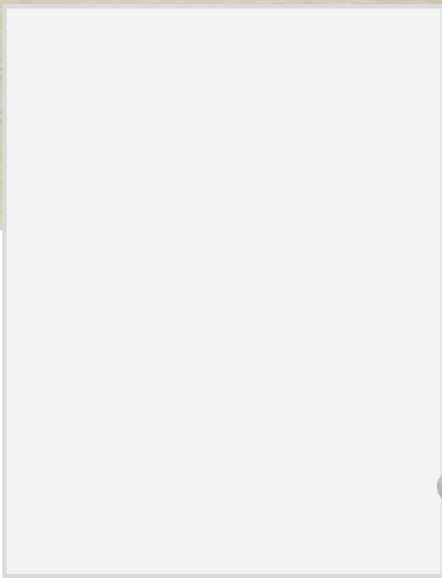


QUARTZ KITCHEN COUNTERTOPS

LUXURY VINYL PLANK



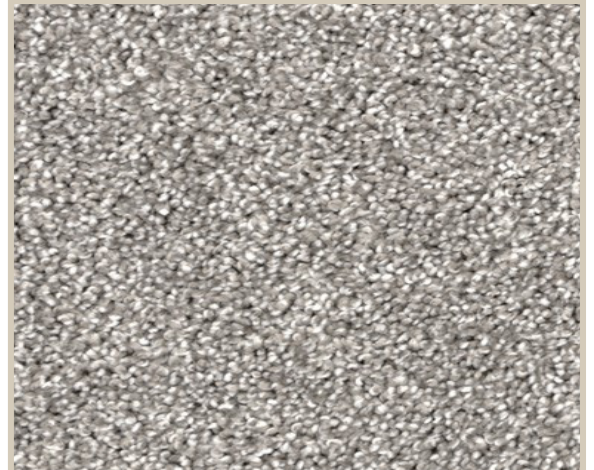
MELAMINE KITCHEN CABINETS



MELAMINE VANITY CABINETS



LAMINATE VANITY COUNTERTOPS



CARPET