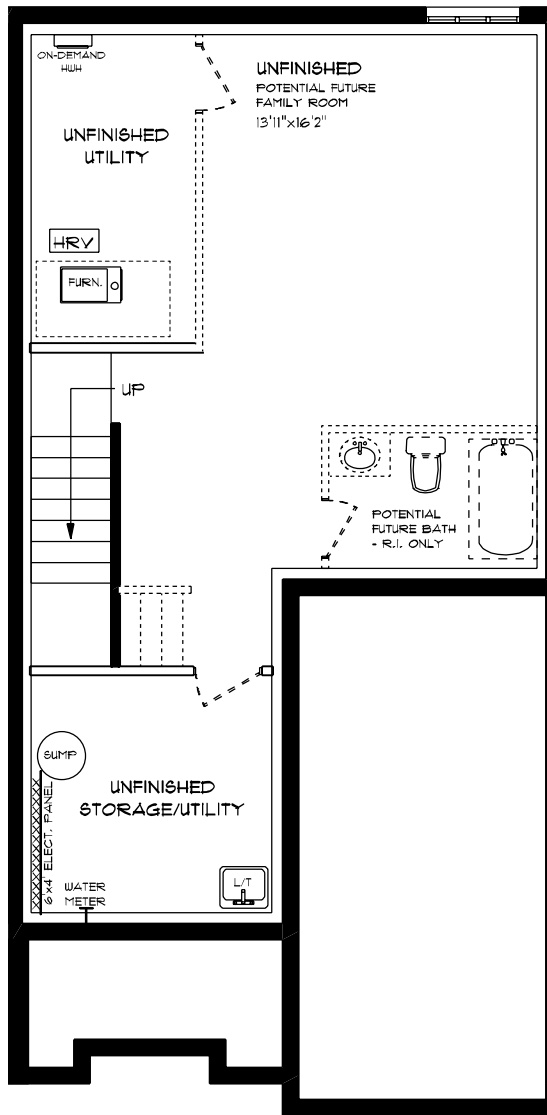




ATMORE (ESSENTIAL SPECS)
LOT 50E (#19) HEMLOCK CRESCENT
FRONT ELEVATION
9' MAIN FLOOR CEILING
APPROX. 1,564 TOTAL SQ. FT.

This plan is the property of H&H Home Homes and any reproduction of this plan, its concepts or ideas, is strictly prohibited. Plans and specifications are approximate and are subject to change without notice. Finished area and room dimensions will change depending on front elevation selection. E.40.E. 2024

CREATED MAR. 2024

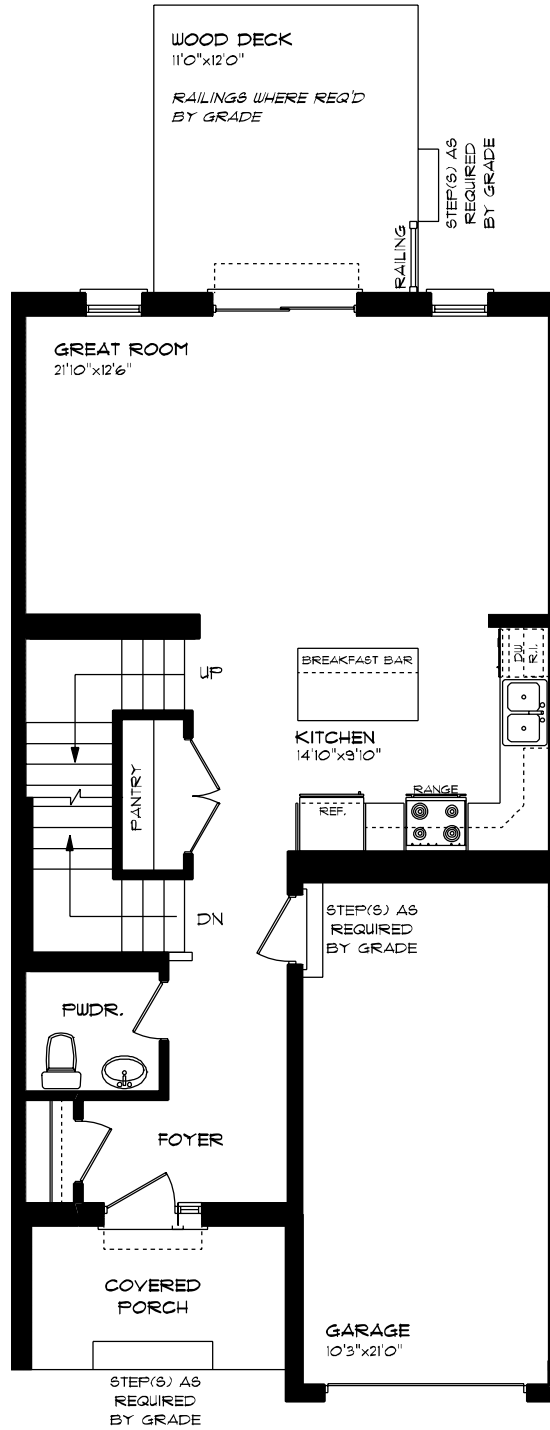


ATMORE (ESSENTIAL SPECS)
 LOT 50E (#19) HEMLOCK CRESCENT
 LOWER LEVEL PLAN

UNFINISHED

This plan is the property of H&H Homes and any reproduction of this plan, its concepts or ideas, is strictly prohibited. Plans and specifications are approximate and are subject to change without notice. Finished area and room dimensions will change depending on front elevation selection.

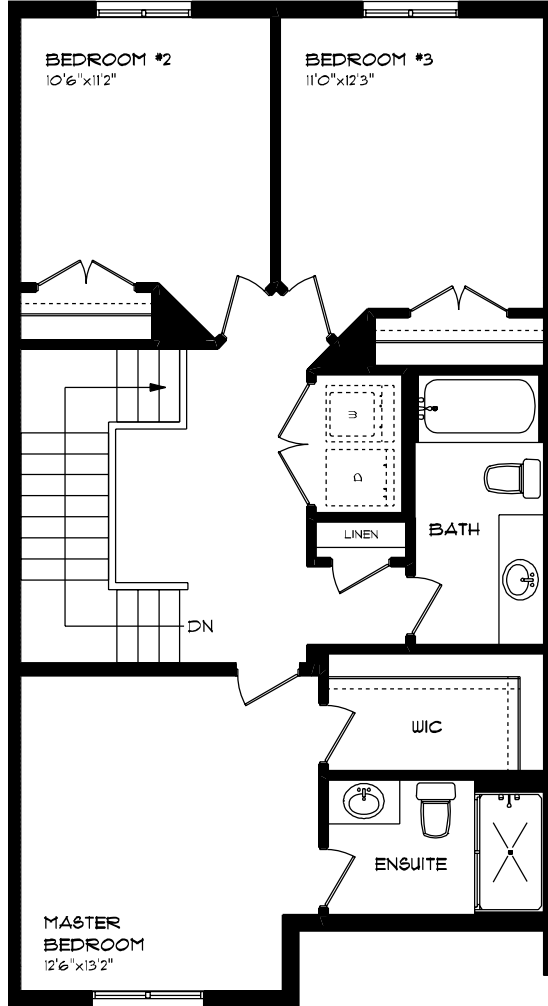
CREATED 14AR, 2024



ATMORE (ESSENTIAL SPECS)
LOT 50E (#19) HEMLOCK CRESCENT
MAIN FLOOR PLAN
9' MAIN FLOOR CEILING
APPROX. 125 SQ. FT.

This plan is the property of Hayhoe Homes and any reproduction of this plan, its concepts or ideas, is strictly prohibited. Plans and sizes listed are approximate and are subject to change without notice. Finished area and room dimensions will change depending on front elevation selection. E.A.O.E. 2024

CREATED MAR. 2024



**ATMORE (ESSENTIAL SPECS)
 LOT 50E (#19) HEMLOCK CRESCENT
 SECOND FLOOR PLAN**

APPROX. 839 SQ. FT.

This plan is the property of H&H Home Homes and any reproduction of this plan, its concepts or ideas, is strictly prohibited. *Risks and associations are approximate and are subject to change without notice. Finished area and room dimensions will change depending on front elevation selection.

CREATED: MAR, 2022