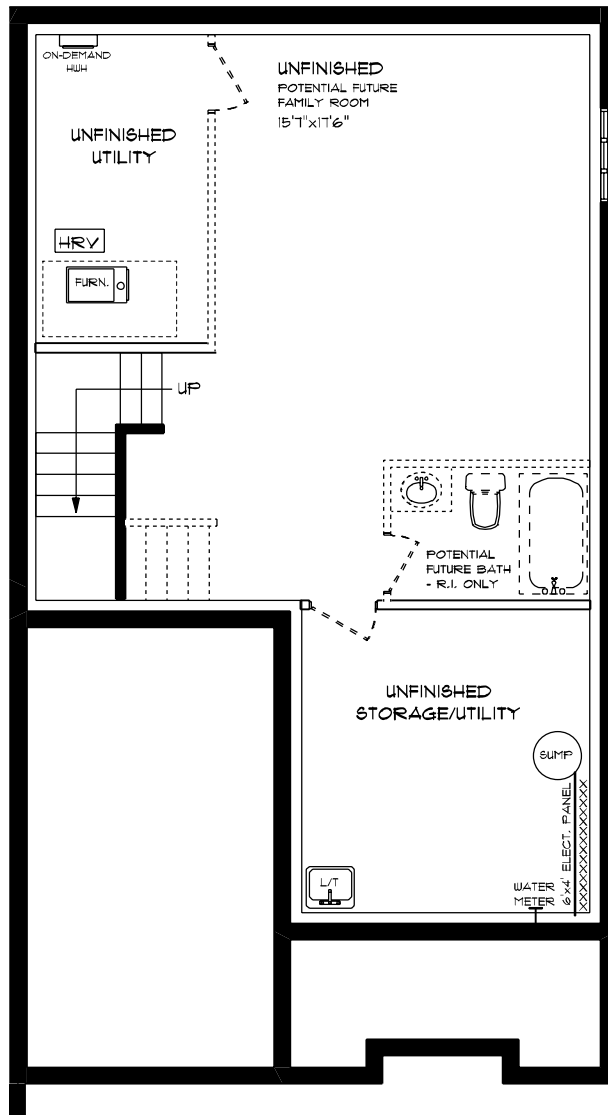




ATMORE (ESSENTIAL SPECS)
LOT 50F (#17) HEMLOCK CRESCENT
FRONT ELEVATION
9' MAIN FLOOR CEILING
APPROX. 1,780 TOTAL SQ. FT.

This plan is the property of HAJOS Homes and any reproduction of this plan, its concepts or ideas, is strictly prohibited. Plans and specifications are approximate and are subject to change without notice. Finished area and room dimensions will change depending on front elevation selection. E.40.E. 2024

CREATED MAR, 2024

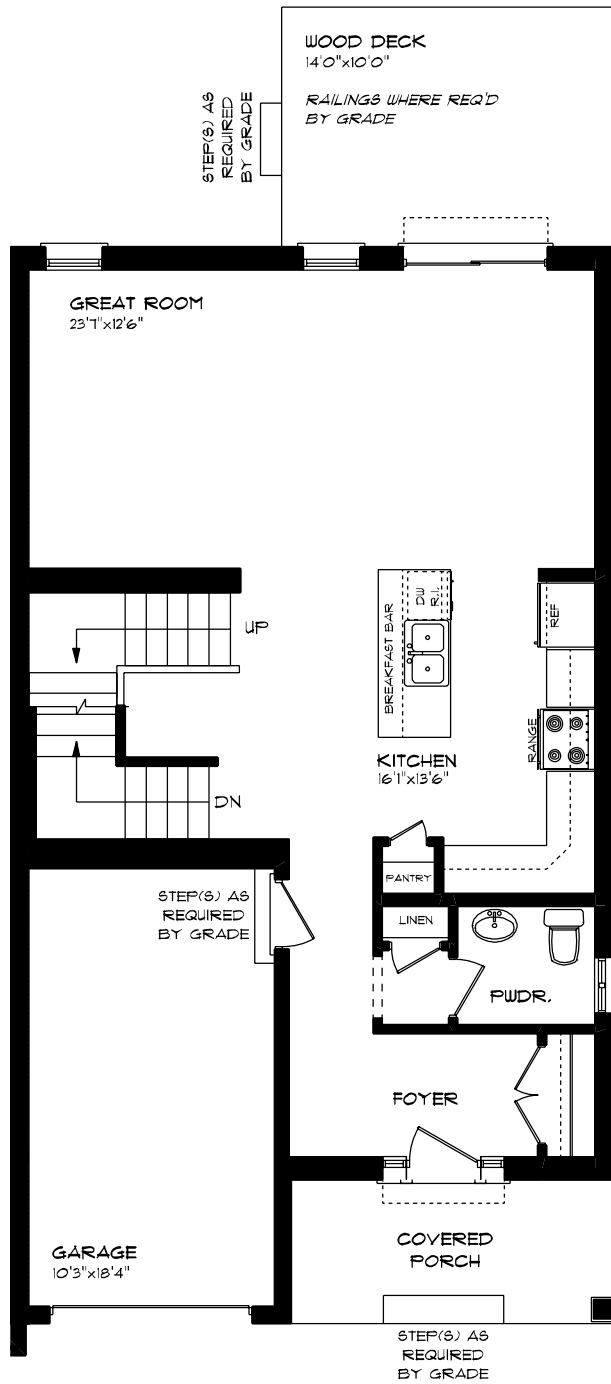


**ATMORE (ESSENTIAL SPECS)
 LOT 50F (#17) HEMLOCK CRESCENT
 LOWER LEVEL PLAN**

UNFINISHED

This plan is the property of Hedges Homes and any reproduction of this plan, its concepts or ideas, is strictly prohibited. Plans and specifications are approximate and are subject to change without notice. Finished area and room dimensions will change depending on final elevation selection.

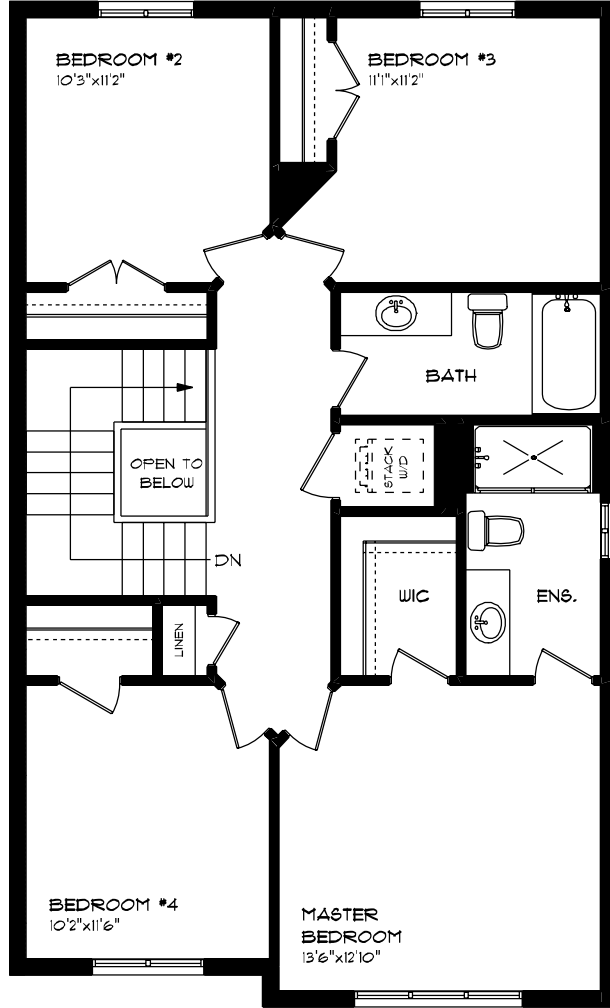
CREATED MAR. 2024



**ATMORE (ESSENTIAL SPECS)
 LOT 50F (#17) HEMLOCK CRESCENT
 MAIN FLOOR PLAN
 9' MAIN FLOOR CEILING
 APPROX. 830 SQ. FT.**

This plan is the property of Hylkos Homes and any reproduction of this plan, its concepts or ideas, is strictly prohibited. Plans and specs filed here are approximate and are subject to change without notice. Finished area and room dimensions will change depending on front elevation selection. E-40-E, 2024

CREATED MAR. 2024



ATMORE (ESSENTIAL SPECS)
 LOT 50F (#11) HEMLOCK CRESCENT
 SECOND FLOOR PLAN

APPROX. 950 SQ. FT.

This plan is the property of i-globe Homes and any reproduction of this plan, its concepts or ideas, is strictly prohibited. Prices and specifications are approximate and are subject to change without notice. Finish area and room dimensions will change depending on front elevation selection.

CREATED MAR. 2024