

WILLOW RUN

29 HEMLOCK CRES

AYLMER | ONTARIO

INVENTORY HOME



THE DETAILS

PRICE	\$755,000
CLOSING DATE	April 23, 2025
LOT NUMBER	51
BEDROOMS	4
BATHS	2.5
GARAGE	2
DRIVEWAY	18'
SQ FT	1,923
MODEL	Vermont

Emma Smith SALES PROFESSIONAL

519.409.1474 | emma.smith@hayhoehomes.com



WILLOW RUN

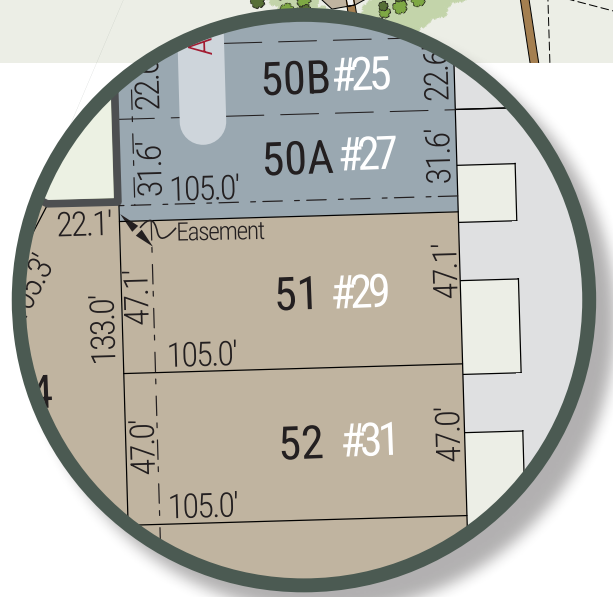
SITE PLAN

29 HEMLOCK CRES | AYLMER ON



exterior features

- KEYLESS ENTRY
- TREATED WOOD DECK
- BBQ GAS LINE
- ASPHALT DRIVEWAY
- WALKING TRAILS



WILLOW RUN

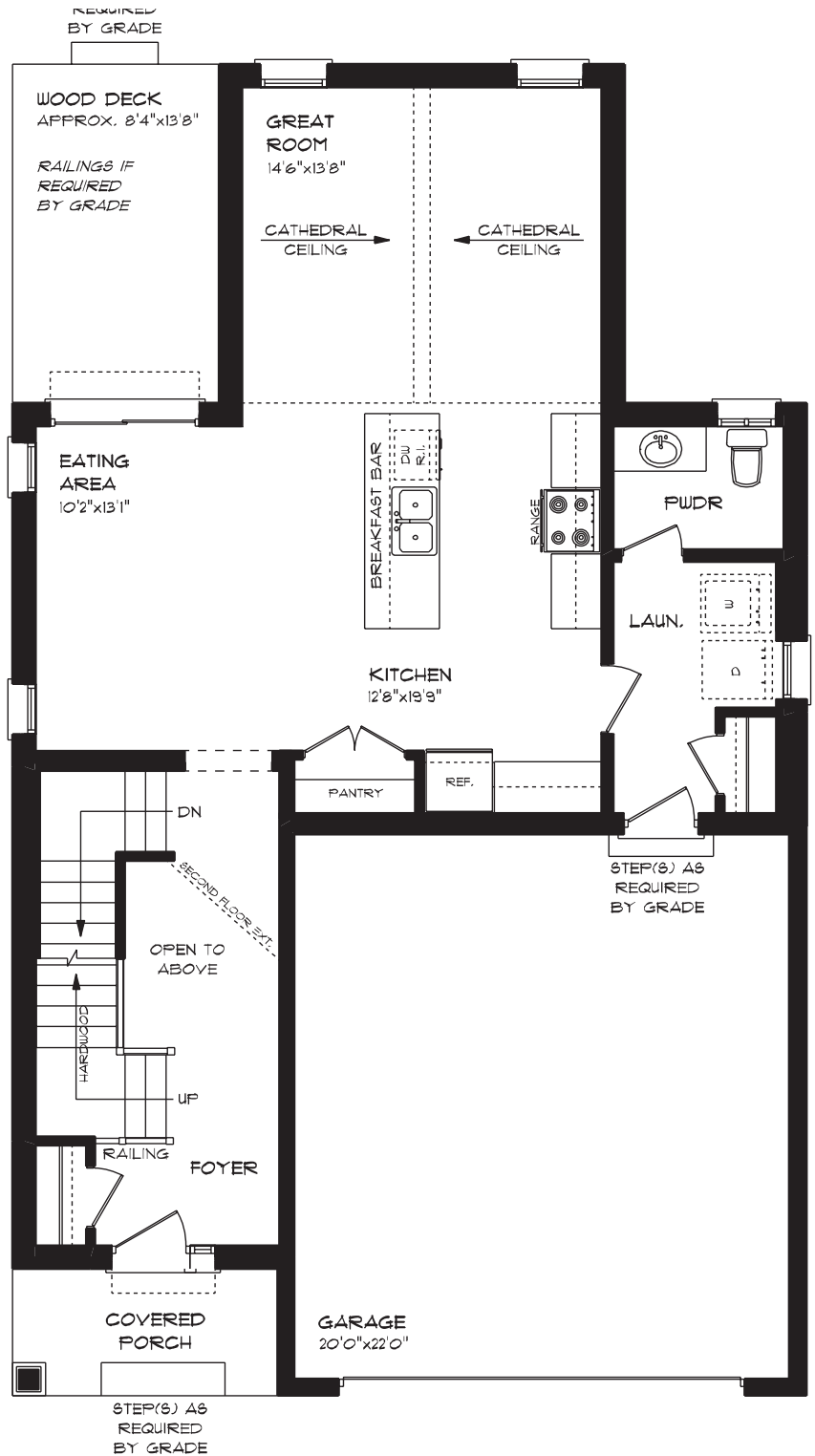
29 HEMLOCK CRES

MAIN FLOOR

978 sq ft

features

- MAIN FLOOR LAUNDRY
- QUARTZ COUNTERTOPS
- KITCHEN BACKSPLASH
- DOUBLE CAR GARAGE
- KITCHEN PANTRY
- TWO STOREY FOYER



WILLOW RUN

29 HEMLOCK CRES

SECOND FLOOR

945 sq ft

features

PROFESSIONALLY DESIGNED

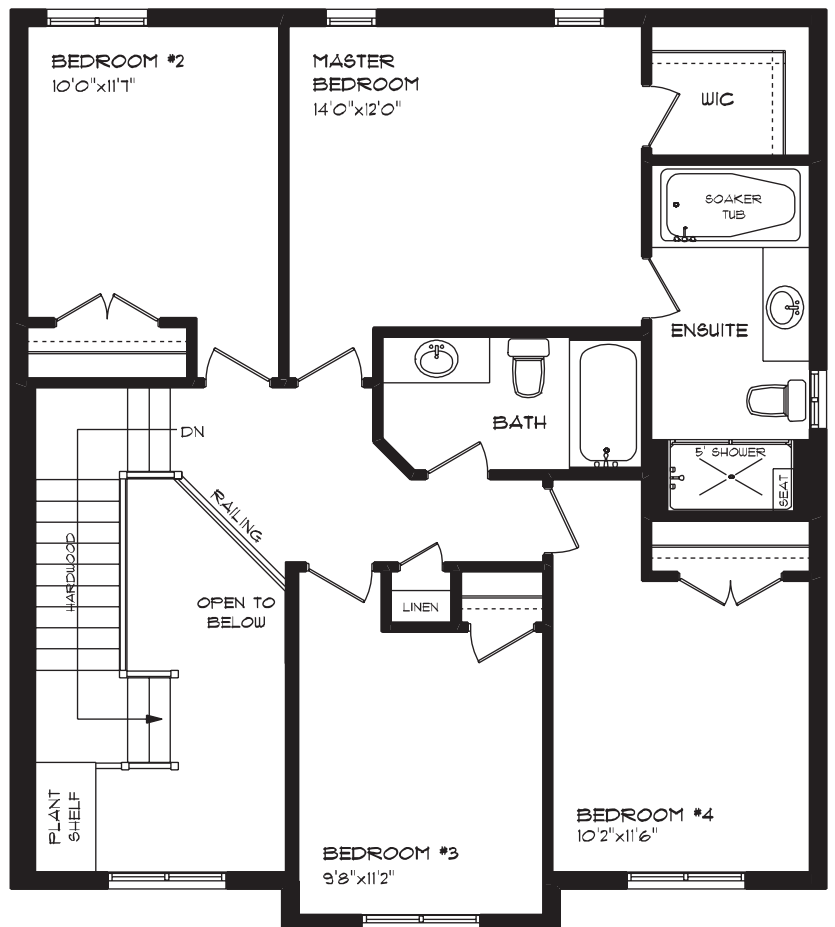
SOAKER TUB

CARPET FLOORING

CERAMIC TILE FLOORING

WALK-IN CLOSET

HARDWOOD STAIRS



WILLOW RUN

29 HEMLOCK CRES

LOWER LEVEL

Unfinished

features

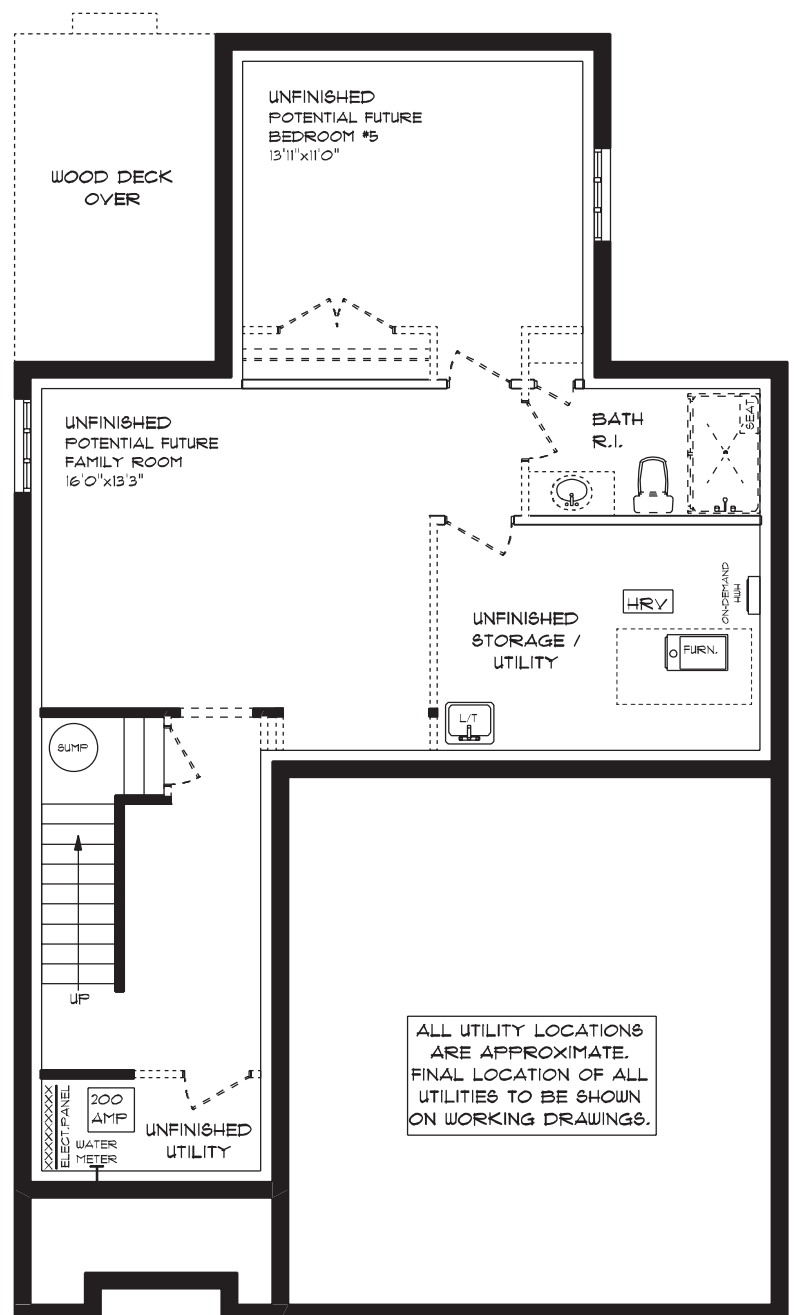
AIR CONDITIONING

GAS FURNACE WITH HRV

HUMIDIFIER

LAUNDRY TUB

NEW HOME WARRANTY



WILLOW RUN

29 HEMLOCK CRES

EXTERIOR FINISHES

SHINGLES



SIDING

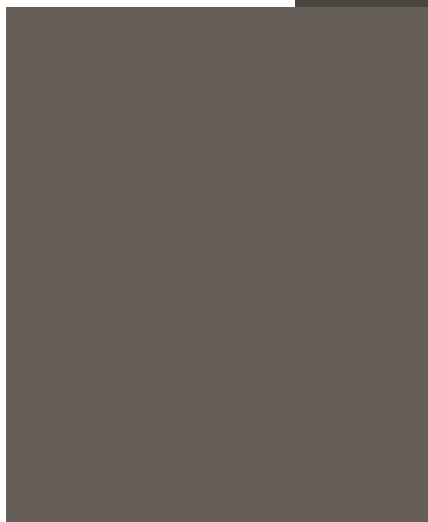


SIDING



BRICK

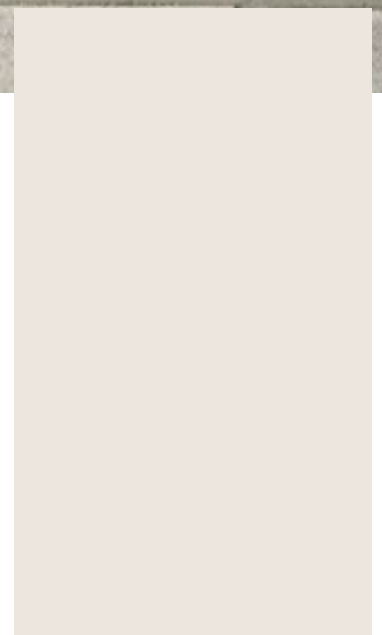
WINDOWS



GARAGE DOOR



FRONT DOOR



ALUMINUM

WILLOW RUN

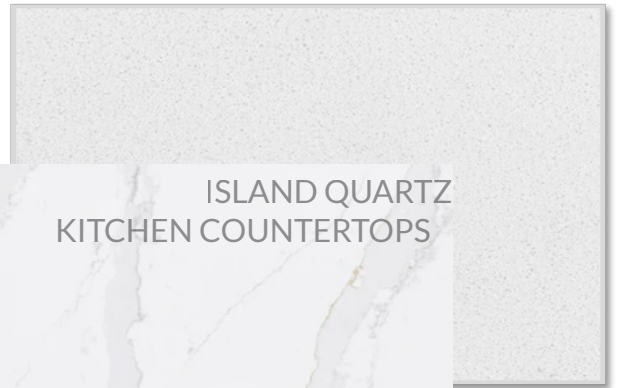
29 HEMLOCK CRES

INTERIOR FINISHES

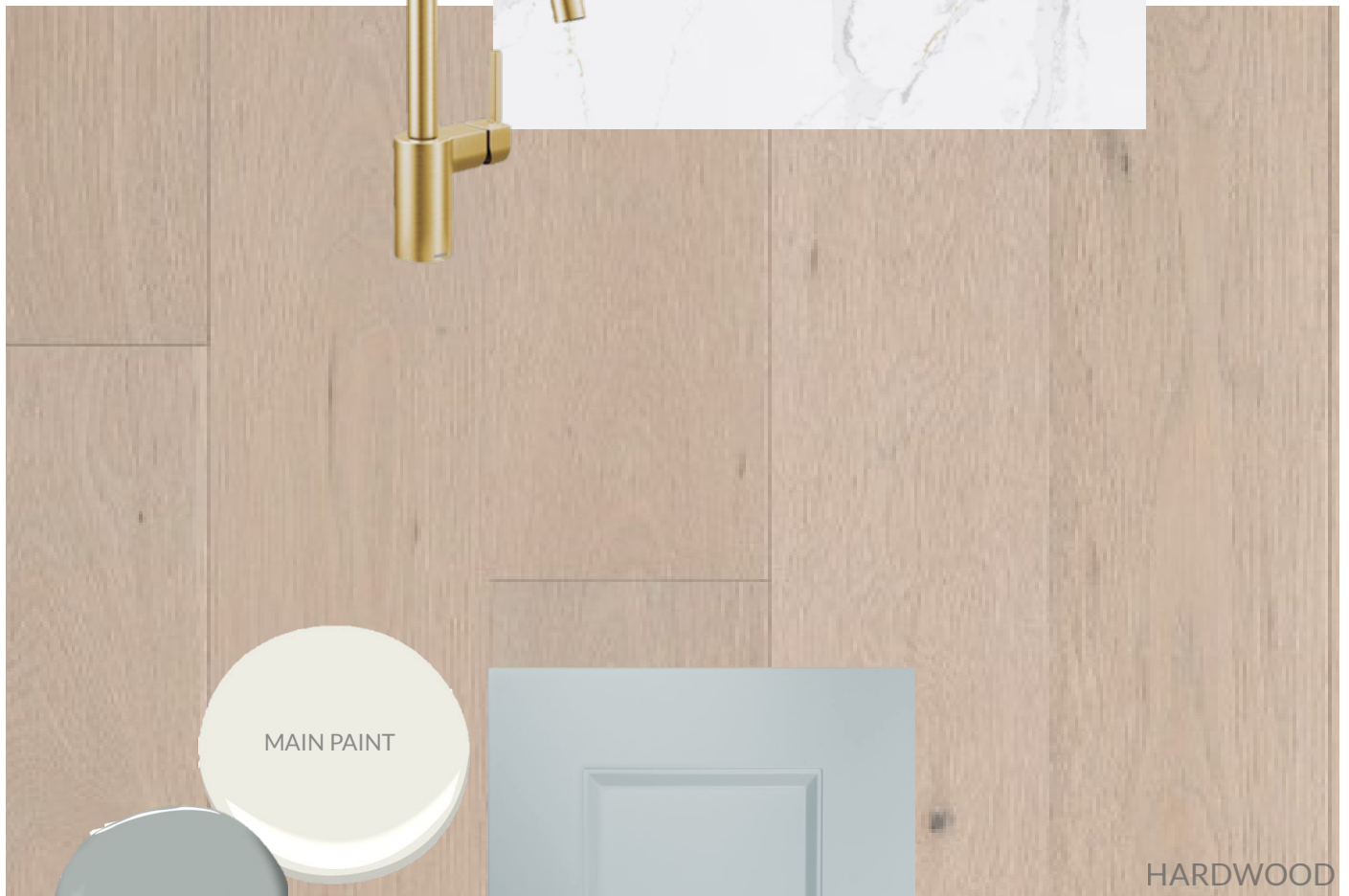
KITCHEN BACKSPLASH



PERIMETER QUARTZ KITCHEN COUNTERTOPS



ISLAND QUARTZ KITCHEN COUNTERTOPS



HARDWOOD

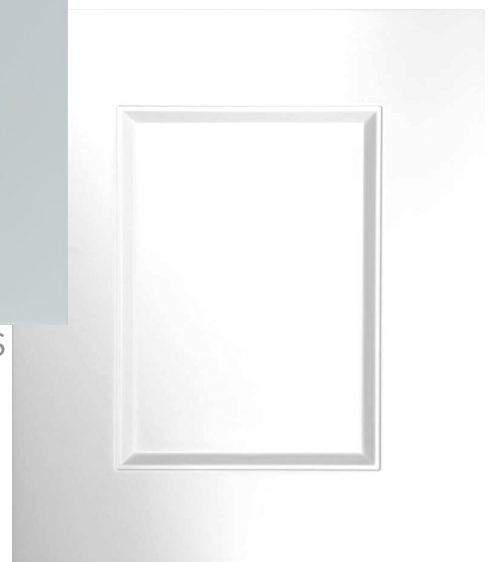
MAIN PAINT



POWDER PAINT



PAINTED KITCHEN LOWERS



PAINTED KITCHEN UPPERS



MAIN FLOOR TILE



WILLOW RUN

29 HEMLOCK CRES

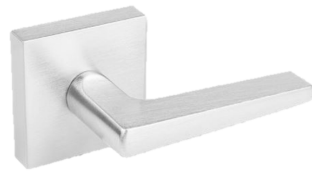
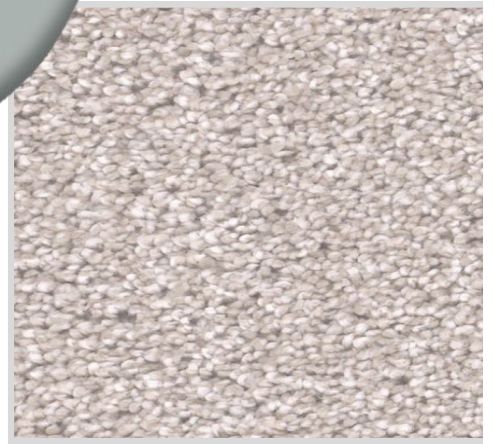
INTERIOR FINISHES

INTERIOR DOOR STYLE



MASTER BEDRM PAINT

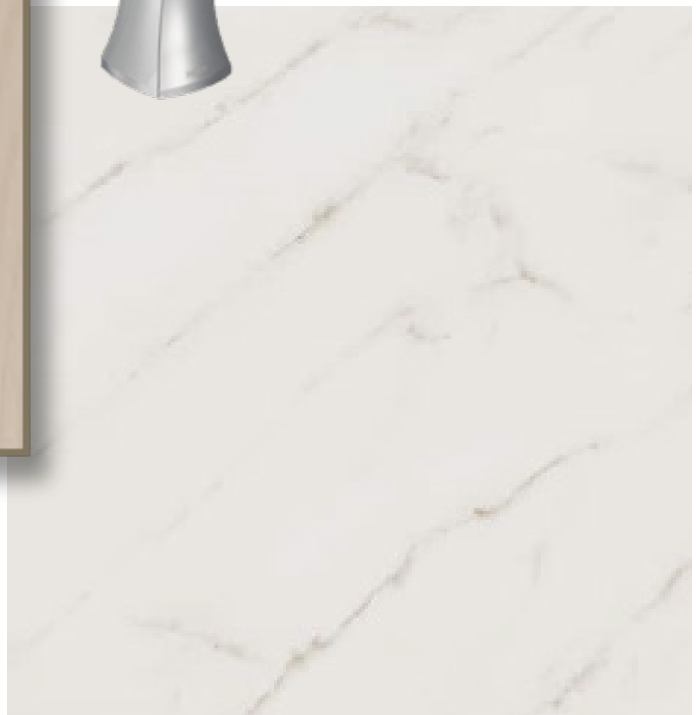
CARPET



VANITY LAMINATE COUNTERTOP



STAINED VANITY CABINETRY



ENSUITE & MAIN BATH TILE