

WILLOW RUN

31 HEMLOCK CRES

AYLMER | ONTARIO

INVENTORY HOME



THE DETAILS

| | |
|--------------|----------------|
| PRICE | \$725,000 |
| CLOSING DATE | April 24, 2025 |
| LOT NUMBER | 52 |
| BEDROOMS | 2 |
| BATHS | 2 |
| GARAGE | 2 |
| DRIVEWAY | 18' |
| SQ FT | 1,732 |
| MODEL | Sharpton |

Emma Smith SALES PROFESSIONAL

519.409.1474 | emma.smith@hayhoehomes.com



WILLOW RUN

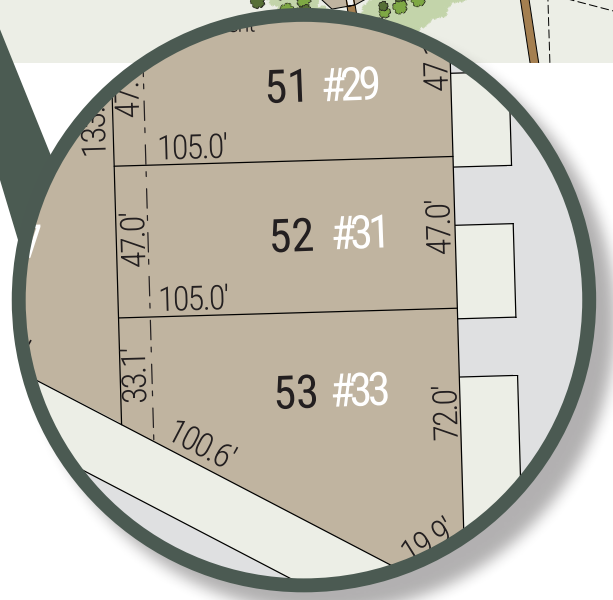
SITE PLAN

31 HEMLOCK CRES | AYLMER ON



exterior features

- KEYLESS ENTRY
- TREATED WOOD DECK
- BBQ GAS LINE
- ASPHALT DRIVEWAY
- WALKING TRAILS



WILLOW RUN

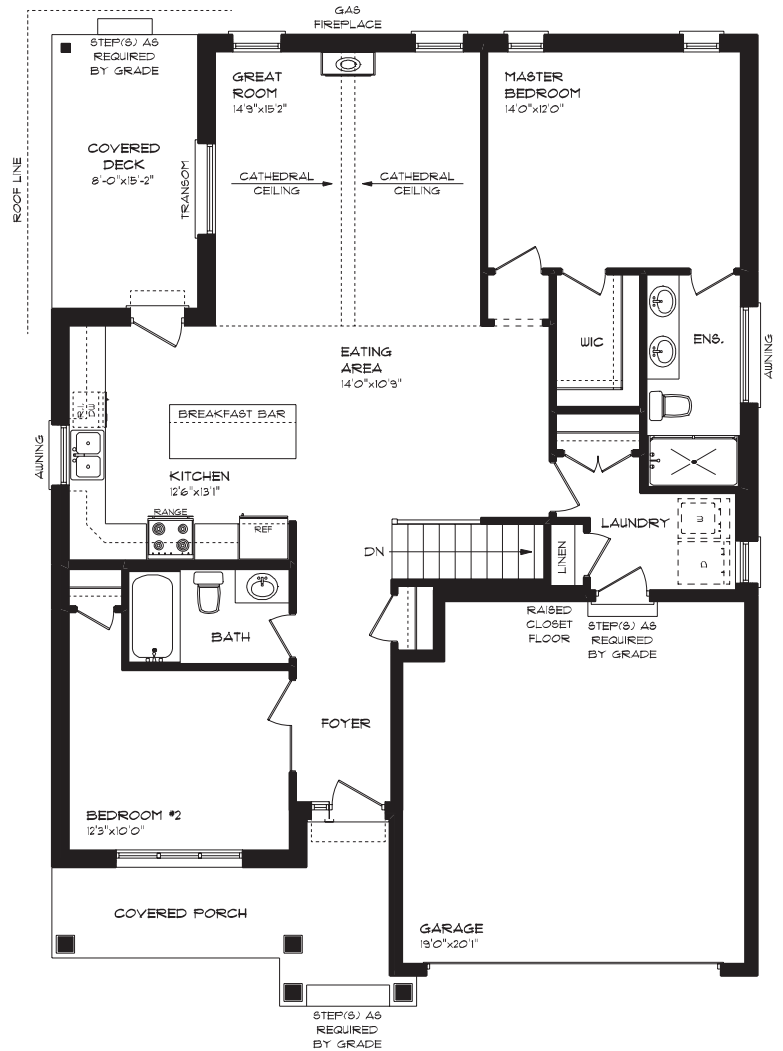
31 HELMOCK CRES

MAIN FLOOR

1,378 sq ft

features

- MAIN FLOOR LAUNDRY
- CATHEDRAL CEILING
- COVERED PORCH
- GAS FIREPLACE
- DOUBLE ENSUITE VANITY
- QUARTZ COUNTERTOPS
- KITCHEN BACKSPLASH
- DOUBLE CAR GARAGE



WILLOW RUN

31 HEMLOCK CRES

LOWER LEVEL

354 sq ft

features

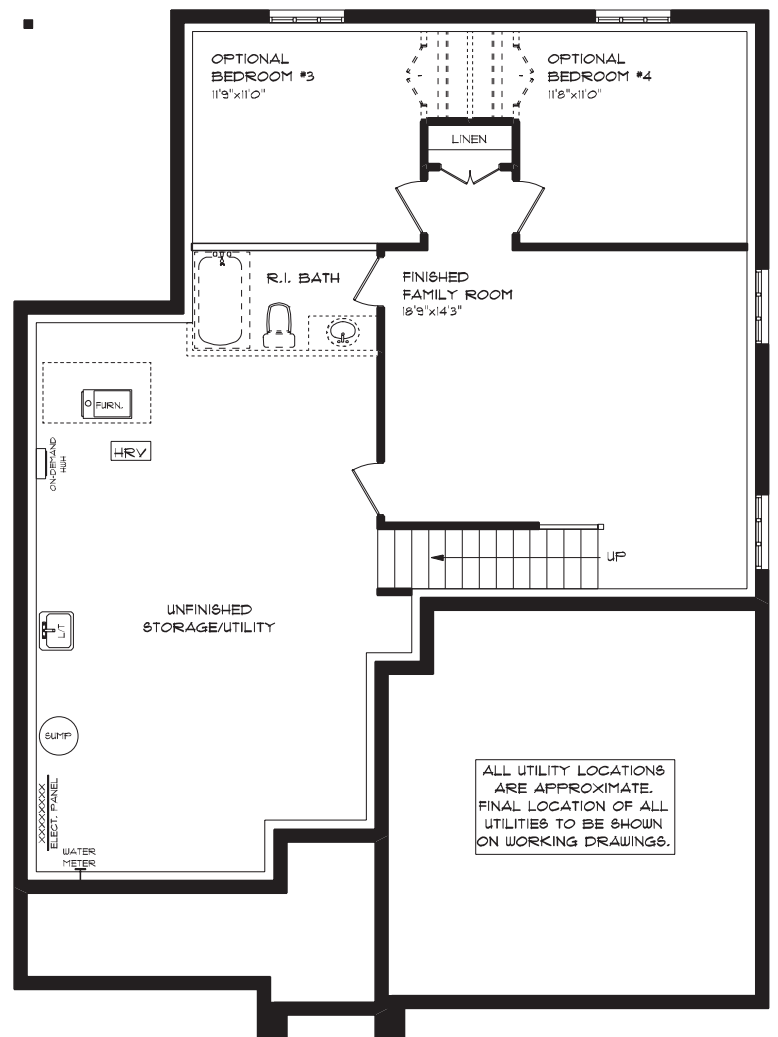
CARPET FLOORING

AIR CONDITIONING

GAS FURNACE WITH HRV

HUMIDIFIER

NEW HOME WARRANTY

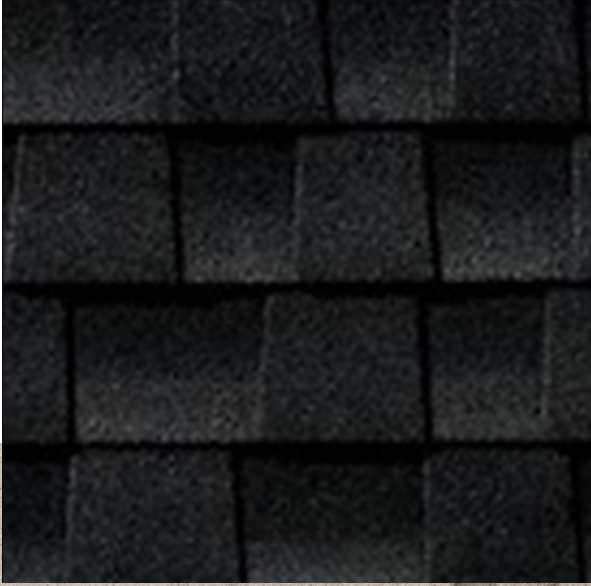


WILLOW RUN

EXTERIOR FINISHES

31 HEMLOCK CRES

SHINGLES

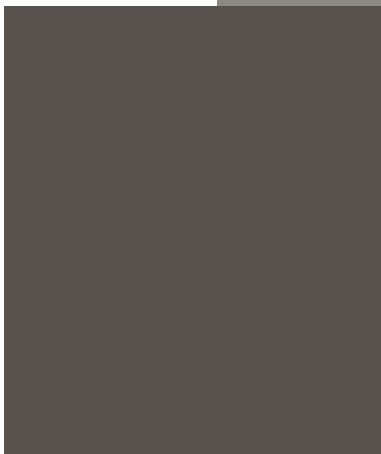


SIDING



BRICK

WINDOWS



GARAGE DOOR



FRONT DOOR



ALUMINUM

WILLOW RUN

31 HEMLOCK CRES

INTERIOR FINISHES

KITCHEN BACKSPLASH



KITCHEN QUARTZ COUNTERTOPS



MAIN FLOOR TILE



PAINTED KITCHEN CABINETRY

WILLOW RUN

INTERIOR FINISHES

31 HEMLOCK CRES

CARPET



INTERIOR DOOR STYLE



VANITY LAMINATE COUNTERTOP



STAINED VANITY CABINETRY



ENSUITE & MAIN BATH TILE