

WILLOW RUN

33 HEMLOCK CRES

AYLMER | ONTARIO



THE DETAILS

PRICE	\$699,000
CLOSING DATE	May 15, 2025
LOT NUMBER	53
BEDROOMS	3
BATHS	3
GARAGE	1
DRIVEWAY	18'
SQ FT	1,936
MODEL	Rumford

Emma Smith SALES PROFESSIONAL

519.409.1474 | emma.smith@hayhoehomes.com



WILLOW RUN

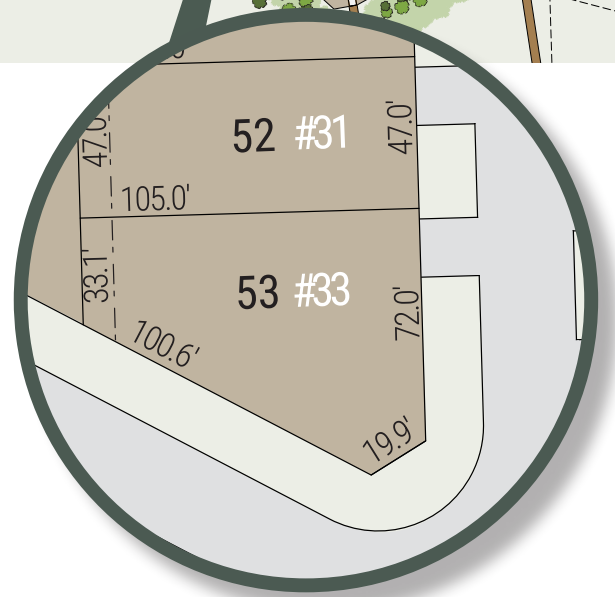
SITE PLAN

33 HEMLOCK CRES | AYLMEER ON



exterior features

- KEYLESS ENTRY
- TREATED WOOD DECK
- BBQ GAS LINE
- ASPHALT DRIVEWAY
- WALKING TRAILS



WILLOW RUN

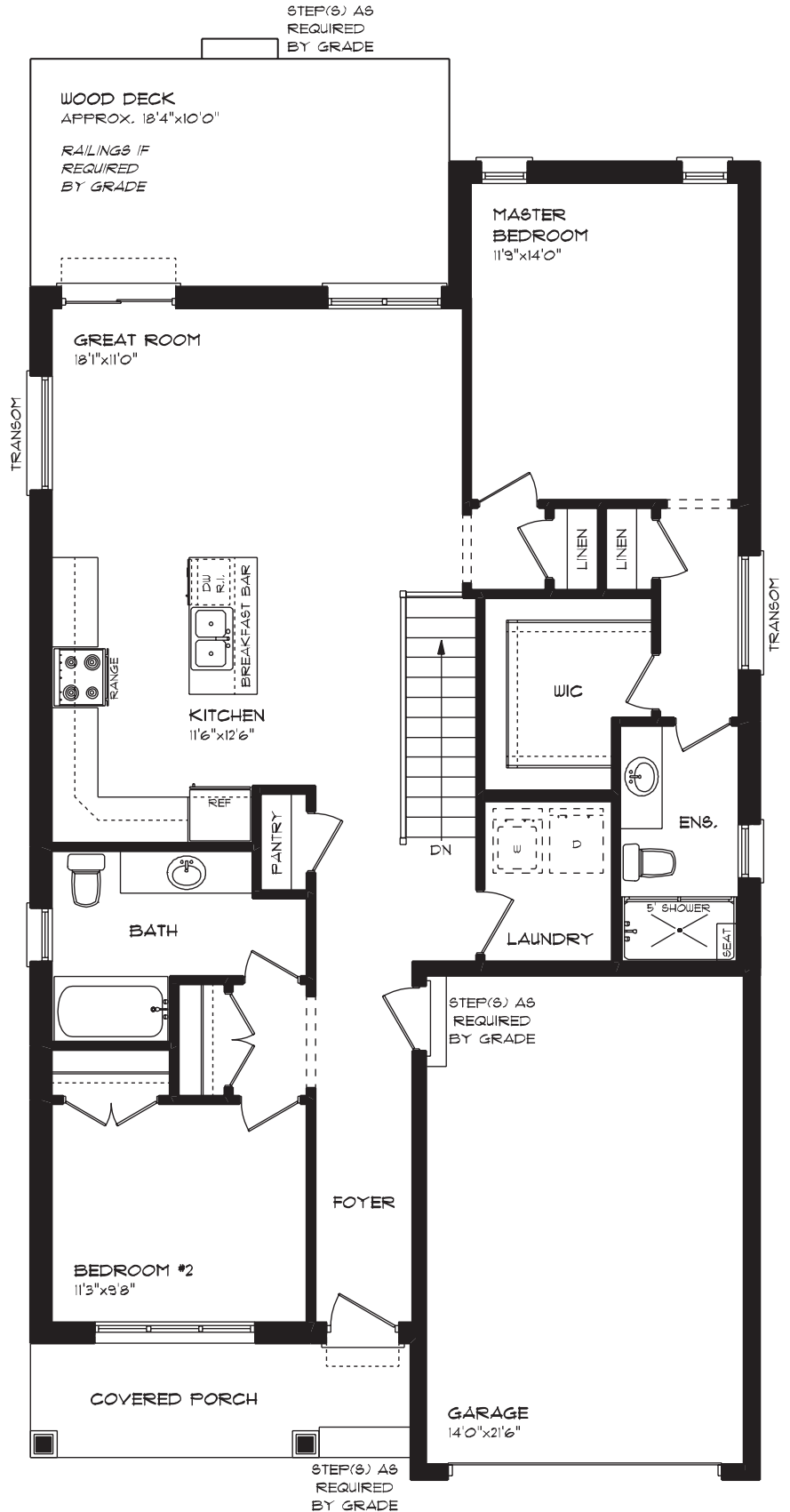
33 HEMLOCK CRES

MAIN FLOOR

1322 sq ft

features

- MAIN FLOOR LAUNDRY
- QUARTZ COUNTERTOPS
- KITCHEN BACKSPLASH
- SINGLE CAR GARAGE
- KITCHEN PANTRY
- VINYL PLANK FLOORING
- LARGE WALK-IN CLOSET



WILLOW RUN

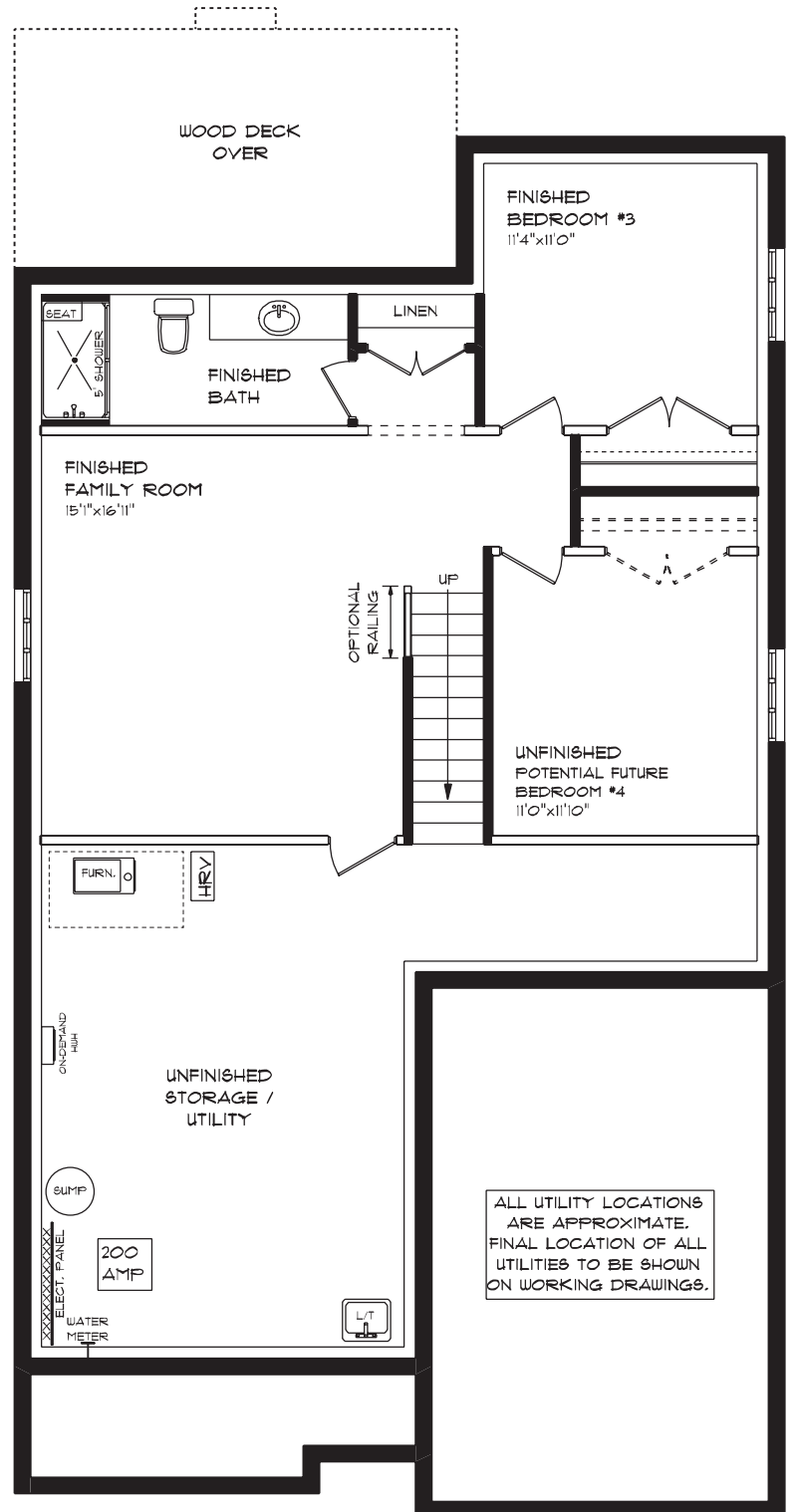
33 HEMLOCK CRES

LOWER LEVEL

614 sq ft

features

- LARGE FAMILY ROOM
- CARPET FLOORING
- TILE FLOORING
- AIR CONDITIONING
- GAS FURNACE WITH HRV
- HUMIDIFIER
- LAUNDRY TUB



WILLOW RUN

33 HEMLOCK CRES

EXTERIOR FINISHES

SIDING

SHINGLES



BRICK

WINDOWS



ALUMINUM



FRONT DOOR

GARAGE DOOR

WILLOW RUN

INTERIOR FINISHES

33 HEMLOCK CRES

QUARTZ KITCHEN COUNTERTOPS

KITCHEN BACKSPLASH



PAINT THROUGHOUT



PAINTED KITCHEN CABINETRY



PAINTED KITCHEN CABINETRY



VINYL PLANK

WILLOW RUN

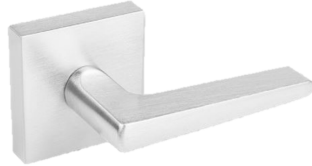
33 HEMLOCK CRES

INTERIOR FINISHES

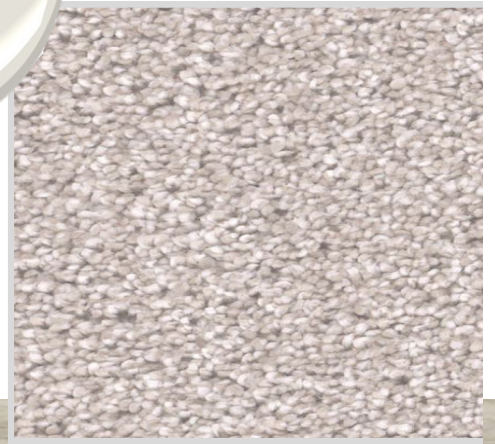
INTERIOR DOOR STYLE



PAINT THROUGHOUT



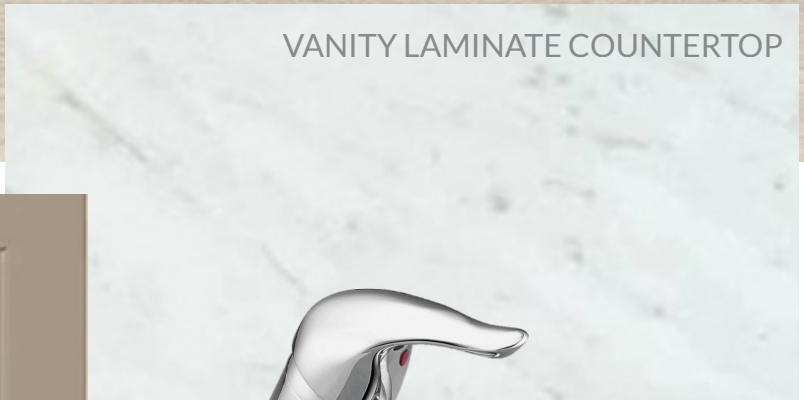
CARPET



VINYL PLANK



VANITY LAMINATE COUNTERTOP



PAINTED VANITY CABINETRY



ENSUITE & BASEMENT BATH TILE

